



Belle Balmer



Connie L. Balmer



Karen Huber



Robin Lynne Balmer



LuAnn Brenneman



Lyndell Martin

Seven women

(Continued from Page 1)

Church of the Brethren, she was in the high school band and participated in musicals

and plays. Her family milks about 55 Holstein cows.

Connie L. Balmer, 17, is the daughter of Mr. and Mrs. Jesse G. Balmer, 572 Millway Road, Litzitz, and is a senior at Warwick High School. The Balmers have about 82 Guernsey cows and Connie is active in the Warwick marching and concert bands, the orchestra and jazz band.

She is also a member of the 4-H Club, a member of the National Honor Society and is active in the youth group of the Middle Creek Church of the Brethren.

Robin Lynne Balmer, 1551 Mentzer Road, Lancaster, is the daughter of Mr. and Mrs. Henry Balmer. Eighteen-year-old Robin is a graduate

of Lampeter Strasburg High School and is a teller at the First National Bank of Strasburg and is employed by Friendly Family Restaurant.

In high school she was a four-year student council representative, was a class officer for three years, was co-captain of the varsity field hockey team and was a member of the girls' track team.

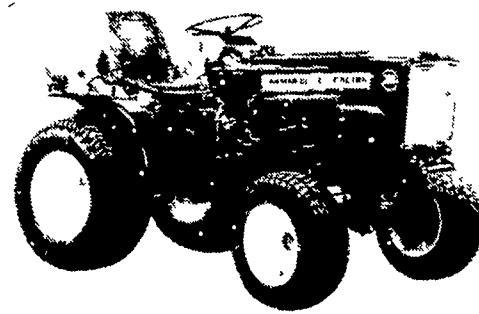
Robin was the 1979 FFA Sweetheart and was a member of the Prom Queen's court. She received Lancaster Optimist's Club's Good Citizenship Award. In her father's herd of Holsteins, Robin owns four animals. She is a member of the West Willow United Methodist Church.

Nineteen-year-old Lu Ann Brenneman is the daughter

(Turn to Page A26)



Karen D. Schmuck



NEW!

Shift on-the-go. Live PTO. Powerful, trouble-free 18 HP 3-cylinder Yanmar Diesel.



The new easy-to-use Yanmar tractor that boosts productivity.

No other tractor in this class offers you so much in the way of exclusive time and work saving features. Yanmar's Power Shift transmission, which gives you the best of mechanical and hydraulic transmissions for one-touch on the go clutchless shifting, a live 2 speed PTO, which starts driving the implement before the tractor moves, allowing immediate and full implement performance, and a new 3 cylinder Yanmar diesel engine, with smoother and quieter operation along with Yanmar's legendary economy power reserve and durability the features that make Yanmar the world's largest seller of small diesel engines. They're all built into the new YM186(D)

• 2 wheel & 4 wheel drive •

SPECIAL PRICE! 1 ONLY...24 H.P. YANMAR 4 WHEEL DRIVE with BACKHOE **\$7800**

• LOADER AVAILABLE 100% FINANCING AVAILABLE

MARTIN HARDWARE & EQUIPMENT CO.

Rt. 501, 1 1/2 Miles South of Schaefferstown, PA
Phone 717-949-6817 Open Mon.-Fri. 8 to 8; Wed. 8 to 12; Sat. 8 to 5

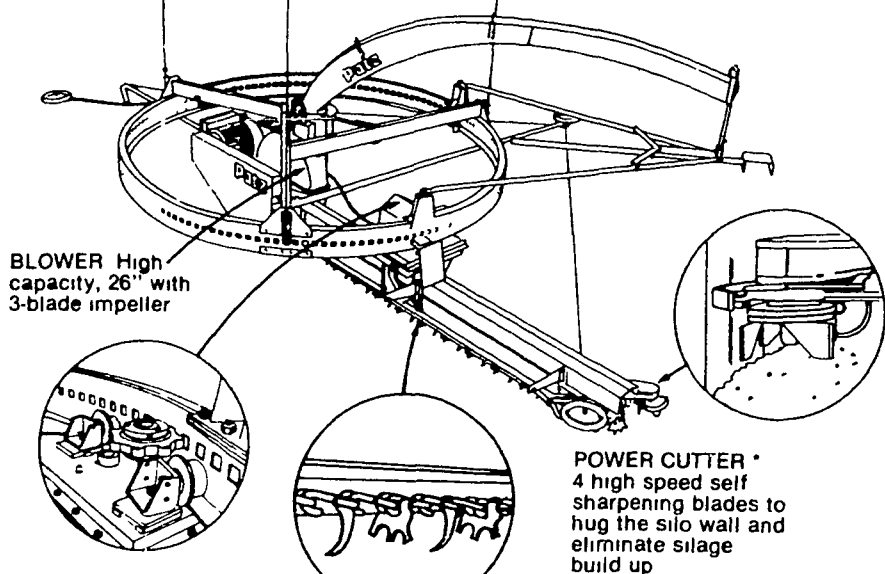
Now, Patz gives you a gathering chain silo unloader with ring drive

WHEN YOU SEE IT YOU'LL KNOW IT WAS BUILT BY PATZ.

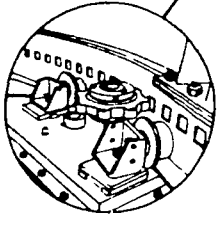
RD 790

SUSPENSION
3 point suspension and 9-foot ring-drive gives perfect balance. Makes quick change over to fill or feed possible. Available to fit silo sizes 12-24 feet.

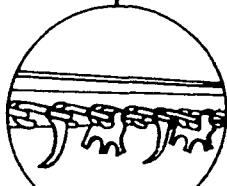
Patz



BLOWER High capacity, 26" with 3-blade impeller



RING DRIVE Independent motor driven



GATHERING CHAIN
The well known Patz claw like teeth and cutter combination provide the ripping and tearing action required for hard packed or frozen silage

POWER CUTTER 4 high speed self sharpening blades to hug the silo wall and eliminate silage build up

For complete details on the RD790 and the dependable 98B surface drive silo unloaders, contact us

*Guard removed for viewing

OUTPERFORMS AUGER MACHINES IN TOUGH LONG HAYLAGE



DAIRY MONTH SPECIAL
ONE SILO UNLOADER
AT 1979 PRICE
★ **BIG SAVINGS** ★

MARVIN J. HORST

DAIRY EQUIPMENT
PHONE 717-272-0871
1950 S. 5th AVENUE, LEBANON, PA

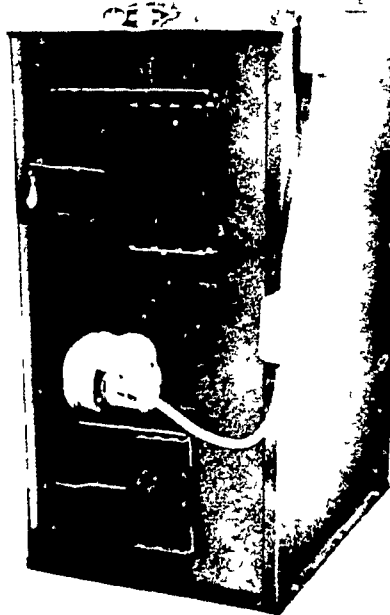
SAVE \$75

REG. \$750 NOW **\$675**

ECONO-FUEL-MASTER



Burns either Coal (America's most plentiful heating fuel) or Wood (a renewable energy source)



FEATURES INCLUDE:

- Automatically-controlled combustion
 - Airtight, double-pass flue gas passage
 - Firebrick-lined combustion chamber
 - Cast iron grates
 - Heavy-gauge steel heat exchanger
 - 100% steel cabinet
 - Baked enamel finish
 - Easily-removed ash container
 - Factory-set Limit Switch to eliminate overheating
 - Forced draft blower for even, efficient combustion
 - Operates with or without electricity
 - Made in U.S.A.
- Optional Feature: Automatic Air control damper for coal firing

HOWARD E. GROFF CO.

Fuel Oil, Gasoline, and Coal
111 E. State Street, Quarryville, PA 17566
Phone: 717-786-2166