

Rye grass covers bare spots quickly

MEDIA — The attitude toward the use of ryegrasses in lawn seed mixtures has changed considerably over the years. Once considered unsuitable because of their coarse texture, stemminess and yellowish-green color, but nevertheless used, because of fast germination and relatively low cost, the use of ryegrasses in desirable lawn seed mixtures is now encouraged. According to James

McKeehen, Delaware County Agent, extensive research has resulted in the development of a group known as the fine textured turf-type ryegrasses. PennFine ryegrass developed at Penn State is one of the varieties in this group that features fine-textured blades, leafiness, a darker green color, slower growth habits and ease of mowing. Other varieties are Citation, Diplomat, Derby,

Yorktown and Manhattan. These ryegrasses are used in seeding new lawns, reseeding old lawns and repairing bare or thin areas. They germinate and establish quickly, have a degree of shade tolerance, and may be seeded alone now to repair thin and weak areas of your lawn. The next time you buy grass seed specify the variety instead of asking for "some ryegrass."

IT'S MAGIC
How quickly
You Get Results
From Our
Classifieds!

PHONE
717-394-3047
or 717-626-1164

From Our
Classifieds!

SPECIAL HOLSTEIN, HEIFER & FEEDER SALE

FRIDAY, JUNE 13
6:30 P.M.

Midway between Carlisle & Shippensburg off
Rt. 11 at Stroughstown, Pa. Watch for signs.

Approximately 100 steers weighing from 300 to 600
lbs. Charolais, Angus, Hereford & Holsteins, 25 beef
heifers, 50 Holstein heifers weighing from 300 to 700 lbs.
Sale charts.

Sale By
PAUL LEINBACH
717-776-7795

Auctioneer
Robert Mullendore

COMPLETE FARM MACHINERY DISPERSAL TUES. EVE. JUNE 10

6:30 P.M.

Canandaigua, New York

Sale to be held at the farm located just off Rte.
364 (East Lake Road) on Lincoln Hill Road, adja-
cent to the entrance to Finger Lakes Community
College.

Discontinuing farming to pursue other interest, sell-
ing all machinery as follows:

Case 1070 Diesel tractor with factory cab and set of
snap on duals; David Brown 1200 diesel tractor with
chains, and front loader with snow blade and bucket;
Farmall "M" w.f.e., all overhauled, live hydraulic;
Oliver "77" n.f.e., super kut, live p.t.o.; A good set of
tractors here!

N.H. 1049 s.p. bale wagon; 2 N.H. 282 wire tie balers;
Hesston 600 s.p. 12 ft. haybine; N.I. 279 9 ft. cut-
ditcher; Custom built 24 ft. sweep wheel rake mounted
on Ford 250 dual wheel truck; Farmhand 3 wheel rake;
16 ft. heavy duty hay wagon rack; Allied 48 ft. skelton
bale elevator; Allied 36 ft. skelton bale elevator.

3800 bu. steel grain bin; McConnell 24-7 grain drill
with grain tank and grass seeder units (no dry fert.
bin); transport running gear for grain drill; Allied 48
ft. 6 in. transport auger; Heath 2 row bean puller; In-
nes 4 row bean windrower; 12 and 16 ft. grain augers;
16 ft. truck grain body; 3 Killbros gravity wagons on
gear; 1965 Ford half ton pick-up; Taylorway 16 ft. dou-
ble transport disc.; I.H. 45 16 ft. vibra-shank; Speedk-
ing 16 ft. fold up transport harrow; Brillion 12 ft.
cultipacker with extentions; Midwest 16 ft. land level-
ing harrow; I.H. model 420 8 ft. heavy duty front blade,
complete; Liquid fertilizer applicator with Century 150
gal fiberglass tank, Taylorway 3 pt. hitch attachment
for Farmall tractor; heavy duty 3 pt. 7 ft. rear scraper
blade, 22 ft. steel deck flat bed body, post hole digger;
stock water tank; app. 50 10 ft. x 40 ft. canvasses; quan-
tity of wooden hay pallets for use with s.p. hay wagon;
few other items! A good line of equipment!

Terms: Cash or good check night of sale. I.D. re-
quired.

Owned by
ALFRED H. DEWEY, JR.
716-394-0545

Sale by Pirrung Auctioneers, Inc.
Wayland, N.Y. 716-728-2520

PUBLIC SALE

SATURDAY, JUNE 21, 1980

HOUSEHOLD GOODS - ANTIQUES
10:30 A.M.

Located in Chester Co., Pa. 2 miles west of
Cochranville, 6 miles north-west of Oxford. At
Jct. of Rt. 41 & 10, go south on Rt. 10 At J & N
Restaurant, turn west on Glenville Rd. Go thru
to sale.

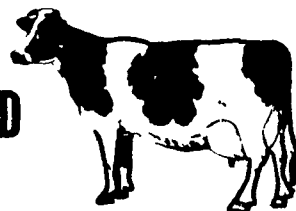
5 piece dining room suite w/table; 3 piece bedroom
suite, book shelf head board, nice condition; 3 piece
bedroom suite, knee hole dresser, walnut night stand;
marble top dresser with oval mirror, dove-tail
drawers; General Electric heavy-duty automatic
washer; General Electric dryer, both heavy-duty No.
18, nice condition; 2 iron beds; single & double springs
& mattress; 2 piece living room suite; 9 piece
pitcher & bowl set, rare opportunity; granny rocker;
Frigidaire refrigerator; cedar chest; 4 plank bottom
chairs; Westinghouse roaster with cabinet; kitchen
table; 3 x 5 wall mirror; 2 straight back cushion
chairs; solid wood chairs; high back chairs; hutch;
gossip seat; chandelier tear drop, dining room; light
complete; 4 kerosene lamps with bracket & reflectors;
5 kerosene lanterns; old kitchen cabinet with flour bins
& sives; twin tubs; digging iron; 4 iron hog troughs;
wooden comb holder; elec. lights; throw rugs; wooden
swivel chairs; 7 lawn chairs; old punch set; pictures;
-motto; linen; quilts; walking plow; ext. cords; 21 in.
Lawn-Boy mower, A-1 condition; many items not
mentioned.

Terms by:
EARL MCHENRY

Auctioneers:
Steve Petersheim 215-869-2508
Everett Kreider

Clerks:
Elvin Beiler, Ann Petersheim
Not Responsible For Accidents
Lunch on premises

WATKINS COMPLETE HERD DISPERSAL



Located just off Rt. 15 on Canoe Camp Creek
Rd., 5 miles from Mansfield, Pa. Watch for
auction arrows.

TUESDAY EVENING, JUNE 17, 1980

At 8:00 Sharp

96 REGISTERED AND HIGH GRADES 96

65 Hi-Grade Holsteins - 26 Brown Swiss, 12 reg. 4
Jerseys. 1 Red & White Holstein.

Herd consists of 55 mature cows in all stages of
lactation, 16 yearlings, 25 calves ranging from 1 to 7
months. Preg. ex. interstate tested, charts day of sale

SOME OF THE TOP COWS:

No. 10. A grade Fleetridge Monitor purchased at the
Winston Rumsey sale had 108 lbs. of 3.6M for tester;
proj. for 20,861M, 689F, 4.0T. You will like this cow. No.
3 milked 91.3 of 4.4M preg. for 17,681M, 796F, No. 18
milked 80.8 proj. for 17,707M, 662M, No. 75 milked 66.5
proj. for 17,092M, 717F, No. 34 milked 73.3 proj. for
17,129M, 704F, No. 86 milked 87.3 proj. for 16,455M,
620F.

Sales Mgr. Note: Butch & Becky have just recently
begun to feed these cows to get good production until
just the last 2 mo. They had a small amount of grain,
pool hay and fairly good silage. I think that most of
these cows have just begun to milk at their potential. A
good group of calves and heifers

Terms: Cash or Good Check
Sale under cover Catalogs Lunch Available

Owners
**RALPH JR. (BUTCH) AND
REBECCA (BECKY) WATKINS**

Auctioneer: Arlow Kiehl
Sales Mgr. Gordon Wood, Mansfield, Pa.
717-549-4901.

For the most in advertising coverage, and preparing
your sale, call Wood's Auction Service

PUBLIC SALE

OF FEEDER CATTLE & HOLSTEIN HEIFERS

Located 7 miles South of Carlisle, Pa. on
Route 11 or 3½ miles North of I-81 at Newville
Interchange on Route 11, then 2 miles east on
Stonehouse Road on:

SATURDAY EVE., JUNE 7

AT 6:30 P.M.

155 Head of Livestock 155

Consisting of 35 Holstein Open Heifers approx. 500 to
700 lbs., balance are beef type steers and heifers,
consisting of Charolais, Angus, Hereford, Black White
Face, Limousine, + Holstein weighing approx. 300 to
700 lbs.

NOTE: 38 head of mixed stock cows, some with
calves by side, balance springers to be offered in one
lot.

These are all home grown cattle of good quality that
will do well for the buyers.

1974 Chevy 1 ton truck with cattle body in good
condition. Metal gates and metal hay racks.

Miscellaneous machinery sold on commission.

TERMS: Cash - Not Responsible for Accidents.

SALE BY:

LEWIS R. FINK
Phone: (717) 249-
3224

Auct: Robert C. Mullendore
Clerk: C. L. Metz

Cattle Sale Held Under Cover
Lunch Available

PUBLIC FARM AUCTION

SATURDAY, JUNE 14, 1980

10:30 A.M.

HOUSEHOLD, ANTIQUES, COLLECTIBLES,
HORSE DRAWN MACHINERY

Selling the property of Mrs. Clara Bundle
Bahr (Decs'd) R.D. #1 Dushore, Pa. Big all day
sale.

Partial list: Philco chest freezer (like new) 17 ft;
Tappan gas range; Davenport & chairs; nice chrome
kitchen 4 chair set; G.E. Dryer; Maytag Wringex
Washer; Estate coal-wood heaterola; Philco
Refrigerator; 5 metal beds complete; Electrolux
sweeper; dishes, sugars, creamers, glass, pots, pans,
utensils; figurines; oak stands; dressers; carved and
yoke mirrors; end tables; nice heavy rug w/backing
15x18; bedding, blankets; elec. heaters; table lamps;
Philco TV; canning jars; Philco stereo with AM-FM;
RCA TV, nite stands; lamp stand; draperies; high
chair; hampers; solid oak round top table w/leaves; 5
leg oak table w/leaves; carved oak dressers, bow
front; oak wash stands; old "Hoosier" kitchen
cabinet; old handmade kitchen cabinet; Jelly Cup-
board; dry sink; side cupboard; old "family" maple
crib-cradle; old Singer drop-leaf treadle; Victorola
Record Cabinet; Columbia Victorola; old tin toys,
stuffed toys and animals; beer trays; old Kodak
camera; old film developer; 3 gal. glass churn; butter
scales; cream separator; large old oak grandfathers
chair; book cases; large old oak grandfathers rocker
with carved lions head and claw-feet; arrow back
plank bottom chair; several old high-back carved oak
plank and cane bottom chairs; old wood Philco radio;
nice little pine high-boy; wall mirrors; pictures and
pic. frames; old cedar chest; carved oak stands; old
oak ice-box; sad irons; shoe lasps; old trappes tong
set; trapper's wooden hide stretchers for fox, coon,
etc; old Daisy air gun; fish spears (gigs); old set of
coal mining drills, needle; wood storm doors and
windows; lawn mower; old horse-shoeing box; brass-
knob hames; leather collar; wood-workers vise;
grain cradles; grind-stones; old corn fodder stalk
cutters; hand corn sheller; cross-cut saws; wooden
automatic pig feeder; weed-burner; single trees; neck
yokes; heavy bob-sleds; Int. McCormick horse drawn
manure spreader; Int. McCormick horse drawn
manure spreader, Int. McCormick 2 bottom plows;
New Idea side-rake (horse or tractor); Mc Cormick
grain binder; John Deere No. 4 horse mower; old dump
rake; hay loader; scraps - iron pile; old junk cars;
miscellaneous small farm and household items and
collectibles of by-gone years.

Sold as the property of
CLARA B. BAHR EST

Robert J. Bakr and Sophie Bahr Batty Admtr's
Dushore, Pa. Phone 717-928-9477.

Sale located just off Rt 220 3 miles South Dushore,
Pa turn off Rt. 220 at top of hill (Satterfield) between
Foley's Corners and Dushore Pa. on black-top road,
west 2 miles to farm (Sale site) watch for & follow
signs from Rt. 220.

Terms Cash or Check w/I.D.
Lunch by Church. Bring chairs. Complete dispersal.
Not responsible for any accidents.
Warren Fiester, auctioneer
Forksville, Pa. 18616