



The newly expanded DeKalb York hatchery at Hellam has increased weekly capacity from 80,000 to 145,000 birds per week. The facility serves the York-Lancaster area.

Doubles pullet hatchery capacity

HELLAM — The DeKalb York Hatchery, located in Hellam, Wednesday held an open house to celebrate its expansion from 80,000 pullets per week to a capacity of 145,000 birds.

Mike Holmes, general manager and head of the firm's poultry division, said the reason for the expansion is that the company sees the egg business growing in the area and wants to grow along with it.

His optimistic remarks flew in the face of current economic conditions in the poultry business. But Holmes said the firm was looking beyond the current slump.

He said growth in the good times over the past 10 years has encouraged DeKalb to expand.

He said the company continues to believe eggs should be produced near where they will be consumed.

Holmes pointed out the "unique recipe" in the York-Lancaster County area which should make the project a success.

First, he said, the markets are here. Second, the lending community seems to like the chicken industry and is willing to lend money for its expansion.

He said the farmers in the area have good equity to

build and expand chicken houses. And, Holmes noted, producers have the desire to make their area the egg basket of the nation.

"Pennsylvania still is an egg-deficit state," he pointed out. "It has the desire, dedication, direction, and people to make it in the egg business."

Pennsylvania Secretary of Agriculture Penrose Hallowell, on hand to address the 200 farmers and other visitors to the hatchery, said such economic development continues to be important to Pennsylvania.

He noted the recent slowdown in the steel industry and the closing of a Firestone tire plant in the state and said he welcomed DeKalb's expansion.

Hallowell said it was good to see agriculture as an expanding industry. He noted that the number of eggs produced in Pennsylvania in the past seven years has increased by 50 percent.

He praised the Pennsylvania farm families for their work in producing eggs and said he, a dairyman, was privileged to be an egg consumer.

Hallowell spoke of the push to expand Pennsylvania's egg markets by product promotion.

Where will they put the

extra 65,000 chicks per week? he asked.

"I have faith in our farmers' talents that they all

will used," he concluded. Hallowell concluded the session by helping to carve a

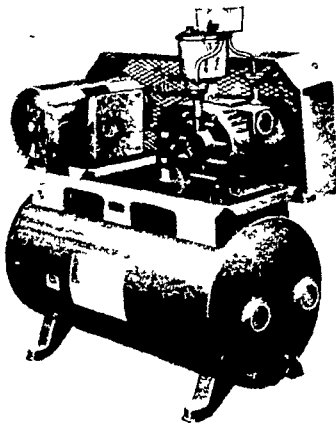
roast pig for the guests at the open house. No visitors were allowed

inside the hatchery as the operators hope to continue to keep it certified disease free.

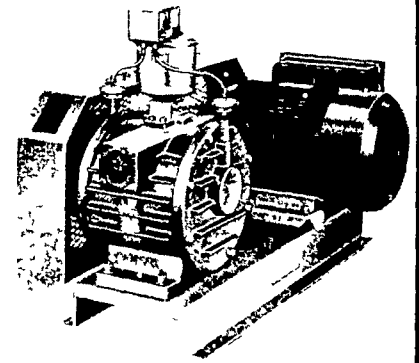


General Manager and Head of the DeKalb Poultry Division Mike Holmes presented Agriculture Secretary Penrose Hallowell with a souvenir of opening day activities.

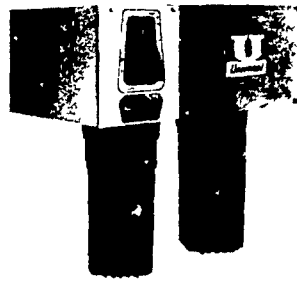
JUNE AGWAY DAIRY MONTH SAVINGS



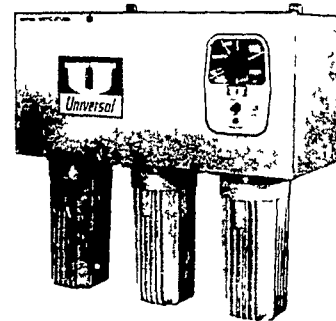
Model 306052 3 hp M Series
33 cfm smooth pulsation free operation. Includes 3 hp mounted motor tank muffler and electric oiler (47 1699)



7 1/2 hp M Series 83 cfm
For the largest vacuum lines where plenty of pulsation free power is needed. Includes pulleys, belts, electric oiler and exhaust check valve. Tank, motor, vacuum controller and muffler not included (47 1587)



Model 313300 Standard Pipeline Washer
Many of the features of Model 313301 but without automatic sanitizer cycle or failsafe components. This model utilizes two large capacity chemical dispensers. Adaptable to all pipeline washing methods — vacuum or pressure circulating (47 1148)



Model 313301 Full Convenience Automatic Pipe-Line Washer
This washer offers features and capabilities never before available with other pipeline washers. A 24 hour timer can be programmed to wash, rinse and sanitize automatically. In addition you get fail safe protection against any malfunction, corrosion resistance, compact construction and a quick glance control panel. Makes pipeline washing completely automatic and dependable and above all — Grade A clean (47 1149)



Model 306002 Vacuum Tank
Heavy gauge 30 gallon capacity tank can be used with any vacuum pump. Equipped with two 2" side vacuum inlets, one 3" side vacuum inlet, one 2" top vacuum inlet and a large bottom self drain. Dimensions: 16" in diameter, 39 height (47 1713)

SALE ENDS JUNE 30, 1980

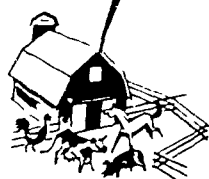
LIGHTNING IS STRIKING!

Are Your Buildings Safe?

LIGHTNING RODS

Now Available

Let Us Estimate The Cost Of Protecting Your Buildings. No Obligation.



C. M. DAVID & ASSOCIATES, INC.
400 N. Race St.
Richland, PA 17087
717-866-7588 (Call)
717-272-8580 (Collect)

HAROLD C. FOSTER
Box 95A
Star Route
Huntingdon, PA 16652
814-643-0248
(Call Collect)

CHAMBERSBURG
717-263-4197

TEMPLE
215-929-5264

CARLISLE
717-243-4312

LANCASTER
717-394-0541

YORK
717-792-2674



AVONDALE
215-268-2043

DUBLIN
215-249-3556

TANEYTOWN
301-848-3225

CHAPMAN
215-395-3381

Or Call: Agway Inc., Harrisburg, Pa. 717/564-0181