

Livestock market and auction news

Indiana Auction

Thursday, June 5
Report supplied by PDA
CATTLE: 77. Sl. cows \$1-\$2 lower. Sl. steers few Choice 60.75-64.25; few Good 57.75-60.50; 1 Standard 51.50; few Utility 45.75-48.00; Sl. heifers few Choice 58.50-61.50; few Good 54.75-55.00; Sl. cows few Utility & Commercial 45.50-47.75; few Cutters 43.00-44.75; few Canner & L. Cutter 38.00-43.50; Sl. bulls few Yield Grade No. 1, 1400-1900 lbs. 56.00-61.75.
FEEDER CATTLE: Steers few Medium & Large Frame No. 1, 400-550 lbs. 58.00-70.50; few Medium No. 2 600-750 lbs. 54.50-57.50. Heifers few Medium & Large Frame No. 1, 300-690 lbs. 60.00-64.00.
CALVES: 85. Vealers steady. Few Choice 95.00-100.00; few Good 85.00-95.00; few Standard & Good 70-120 lbs. 70.00-85.50; few Utility 55-125 lbs. 51.00-65.00.
FARM CALVES: Hol. Bulls 85-120 lbs. 80.00-116.00; Hol. Heifers 85-120 lbs. 90.00-110.00; Beef Cross Bulls & Heifers 85-110 lbs. 80.00-100.00.
HOGS: 114. Barrows and gilts \$2 higher. US No. 1-2 200-230 lbs. 32.25-33.75; No. 1-3 200-240 lbs. 31.00-32.50; few No. 2-3 240-290 lbs. 30.50-30.75; few Lightweight No. 1-3 140-170 lbs. 23.25-29.00; Sows US No. 1-3 325-575 lbs. 23.00-27.75; few No. 2-3 200-250 lbs. 20.00-22.25. Boars 20.00-24.00.
FEEDER PIGS 66. US No. 1-3 30-40 lbs. 10.00-13.00 per head; No. 1-3 45-75 lbs. 17.00-19.00.
SHEEP: 7. Good 80 lbs. 61.00; Sl. ewes: 18.00-21.50.

Chambersburg Auction

Thursday, June 5
Report supplied by PDA
CATTLE: 298. Slaughter steers mostly steady to 75 cents higher; Sl. cows steady to \$2 higher. Sl. steers: Choice 925-1225 lbs. 59.50-62.75; few prime 63.75; Good & Choice Holstein 55.75-58.50; few Standard 50.00-55.00; Good 54.50-58.00. Sl. heifers. few Choice 55.00-59.00. Sl. cows: Utility & Commercial 44.50-50.50. Cutters 45.00-51.25; Canner & L. Cutter 40.25-45.00; Shells down to 34.75. Sl. bullocks: few Good & Choice 53.00-56.50. Sl. bulls: few Yield Grade No. 1, 1150-1980 lbs. 50.25-56.25.
FEEDER CATTLE: Steers, few Large Frame No. 2 425-660 lbs. 58.50-64.00.
CALVES: 415. Vealers \$3-\$8 lower. few Prime 82.00-90.00; Choice 80.00-90.00; few Good 65.00-78.00; Standard & Good 70-90 lbs. 68.00-74.00; Utility 50-90 lbs. 60.00-67.50.
FARM CALVES: \$5-\$20 lower. Hol. Bulls 85-125 lbs. 78.00-105.00; Hol. Heifers 80-140 lbs. 105.00-150.00.
HOGS: 172. Barrows and gilts weak to 25 cents lower. US No. 1-2 220-245 lbs 33.00-33.10; No. 1-3 210-240 lbs. 31.35-32.85, 1 lot No. 2-3 260 lbs 30.60; Sows 300-500 US No. 1-3 23.75-27.00, few No. 2-3 400-500 lbs 21.00-24.00. Few Boars 21.00-23.00.
FEEDER PIGS 65 US No. 1-3 20-35 lbs 5.00-13.00 per head; few No. 1-3 50-60 lbs 15.00-19.00.
SHEEP 19. Few Choice 80-120 lbs. 63.00-68.50.

Pa. Auction Summary

Friday, June 6
Report supplied by PDA
CATTLE: 7158. Compared with 5092 head last week and 6843 head a year ago. Slaughter steers, heifers, and bullocks steady to \$1 lower. Sl. cows uneven utility & commercial steady to 25 cents higher, canner and cutter steady to \$1 lower.; Sl. bulls unevenly steady. Sl. steers: High Choice & Prime 62.75-65.00; Choice 59.50-65.75; Good 54.25-60.00; Standard 51.00-56.00. Sl. heifers: Choice 58.00-63.00; Good 53.00-59.00; few Standard 50.00-54.00. Sl. cows: Utility & Commercial 44.00-49.00 few to 50.50; Cutters 43.00-48.00; Canner & L. Cutter 38.00-44.00; Shells down to 34.00. Sl. bullocks: Choice 56.00-60.00; Good 53.00-57.00. Sl. bulls: Yield Grade No. 1, 1200-2100 lbs. 55.00-61.00; Grade No. 2, 900-1500 lbs. 48.00-56.00.
FEEDER CATTLE: Steers, Large Frame No. 1 350-650 lbs. 64.00-76.00; few Large Frame No. 2 400-675 lbs. 60.00-67.00; Medium No. 1 300-600 lbs. 60.00-72.00. Heifers, Medium Frame No. 1 350-600 lbs. 57.00-70.00.
CALVES: 3132. Compared with 2029 head last week and 2310 farm calves. Vealers steady \$5 lower. Few Prime 108.00-114.00; Choice 85.00-100.00 few 110.00; Good 70.00-90.00; Standard & good 90-110 lbs. 70.00-85.00; 70-90 lbs 65.00-75.00; few Utility 50-100 lbs. 30.00-67.00.
FARM CALVES: moderate-slow. Hol. Bulls 90-125 lbs. 80.0-122.00; Hol. Heifers 90-140 lbs. 90.00-140.00.
HOGS 9462. Compared with 4531 head last week and 7453 head a year ago. Barrows and gilts weak to 75 cents lower. US No. 1-2 200-245 lbs. 31.50-33.50; No. 1-3 200-250 lbs. 30.00-32.50; No. 2-3 190-270 lbs. 28.00-31.00; No. 1-3 140-180 lbs. 23.25-30.00; Sows \$1-\$2 higher. US No. 1-3 300-600 lbs. 23.00-30.00 few; No. 2-3 400-700 lbs. 18.00-24.00. Boars 18.00-26.50.
FEEDER PIGS 1868. Compared with 1400 head last week and 1271 a year ago. Strong. US No. 1-3 25-35 lbs 7.50-15.00 per head; No. 1-3 35-50 lbs. 12.00-25.00; Few No. 1-3 50-100 lbs 20.00-30.00.
GRADE FEEDER PIGS: 2092 Compared with 2043 head last week, and 3588 head a year ago. All sales by CWT. Feeder Pigs steady \$5 higher. US No. 1-2 30-40 lbs. 40.00-50.00, 40-50 lbs. 40.00-49.00, 50-60 lbs. 36.00-43.00 60-70 lbs 35.00-40.00, No. 2-3 50-65 lbs. 35.00-39.00, 70-110 lbs. 31.00-39.00; US No. 2-3 25-40 lbs. 35.00-48.00, 40-50 lbs. 38.00-47.00, 70-110 lbs. 32.00-38.00.
SHEEP 682. Compared with 290 head last week and 711 head a year ago. Spring lambs uneven. Choice 70-115 lbs. 63.00-74.00 few 30-70 lbs. 70.00-80.00. Sl. ewes. 10.00-33.00.



G&M Livestock

Duncansville, Pa. Monday, June 2
Report supplied by auction
 Compared to last Monday, market report steers higher; cows steady; hogs steady.
DAIRY COWS: 890.00-1000.00.
STEERS: High Choice and Prime 63.00-65.75; Good to Choice 60.00-63.00; Good 55.00-60.00; Standard 50.00-55.00.
HEIFERS: High Choice and Prime 60.00-62.00; Good to Choice 56.00-60.00; Standard 50.00-56.00.
FEEDERSTEERS: Good to Choice 300-500 lbs. 60.00-83.00.
BULLS: 1200-2325 lbs.

53.00-58.50; 900-1200 lbs. 50.00-55.00.

COWS: High Choice to Prime 46.00-48.50, few to 50.00; Good 44.00-46.00; Utility 42.00-44.00; Cutters 40.00-42.00; Cannors Down to 38.00.

CALVES: High Choice 100.00-109.00; Good to Choice 80.00-100.00; Standard to Good 60.00-80.00.

FARM CALVES: Hol. Bulls 110.00-132.00; Hol. Heifers 140.00-167.50.
FEEDER PIGS: 15-25 lbs. 10.00-15.00; 25-50 lbs. 15.00-24.00.

HOGS: 200-240 lbs. 31.50-32.80, few to 23.10; 170-290 lbs. 28.00-31.00.

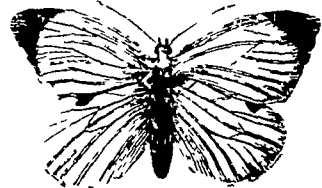
SOWS: 22.00-28.50.
BOARS: 18.00-24.50.
LAMBS: 55.00-70.00.
SHEEP: 24.00-32.25.

Rescue seminars planned

ELIZABETHTOWN — Three seminars will be held in Lancaster County to instruct volunteer fire department and emergency crew personnel in basic rescue techniques involving farm machinery accidents. The seminars, planned and sponsored by the Women's Safety Committee of Lancaster County Farmers Association, will be held at Messick Farm Equipment, located at the Rheems Exit of Rt 283

Messick personnel will familiarize the emergency crew personnel with ways to shut off equipment, including the location of fuel lines to engines, as well as methods of quickly releasing victims from machinery. Some old pieces of equipment will be used to test port-a-power tools

The sessions will be held at 7 p.m. on Tuesdays, June 17 and 24, and at 1 p.m. on Saturday, June 21



BUY NOW ► PAY MARCH 1, 1981

That's Right! Now You Can Buy New or Used IH Tractors & Implements Sold with Tractors and Use Your Trade In for A Low Down Payment. Then No Interest, No Payments until March 1, 1981. Plus Red Power Rebate.



YOU GET MORE IN A NEW 84!

CHECK OUR PRICES BEFORE YOU BUY



IN STOCK NOW:
 • 484 • 584 • 684 • 784 • 884
 Utility and Row Crop Prices

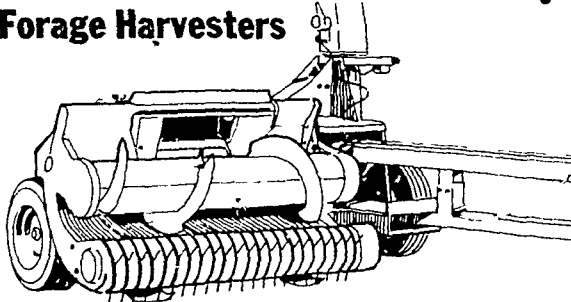
Put Red Power to the test. It pays!
 Right now you have a chance to receive big savings from international Harvester when you test drive any new Series 84 utility or row crop tractor with loader.

\$200 Back	\$100 Back	\$50 Back
International Harvester will give you \$200 when you take delivery of any new Series 84 tractor with an International front mounted loader by June 30 1980	International Harvester will give you \$100 when you take delivery of any new Series 84 tractor without a loader before June 30 1980	Get \$50 from International Harvester even if you buy a new compact tractor of similar horsepower within 30 days of test driving any of our Series 84 tractors

Stop in and test drive a Series 84 today.

Announcing... WAIVER OF FINANCE ON HAY AND FORAGE EQUIPMENT TILL APRIL 1, 1981

International® 720 & 830 Forage Harvesters




- 720 for tractors up to 130 PTO hp, 830 for tractors up to 175 PTO hp
- Dual electric clutches, remote controlled for start, stop, reverse of feed system.
- Large diameter feed rolls automatically adjust to crop volume
- Remote electrical control of discharge deflector and spout direction
- Hydra-Sharp knife sharpener bevels as it sharpens for maximum cutting efficiency

NOW ONLY \$5,190

International® 425 Baler

The 425 is an economy baler with many of the same performance features found on bigger IH balers

- Up to 15 tons per hour capacity
- 61-in. 4-bar pickup with 76 teeth sweeps the windrow clean
- Dependable Deering-type knotters tie strong secure bales.
- Heavy-duty drive train and 2-knuckle PTO 3-knuckle PTO optional



R.S. HOLLINGER & SON INC.

113 W. Main St., Mountville
 INTERNATIONAL QUALITY PARTS
 FACTORY TRAINED SERVICEMEN
 In York County Call Our Salesman: CHARLES M. LEHMAN - 717-755-6486

Mon. thru Thurs. 7 to 8
 Fri. 7 to 5:30, Sat. 7 to 3