

BUY, SELL, TRADE OR RENT THROUGH THE
CLASSIFIED ADS
 PHONE: 717-626-1164 or 717-394-3047

LOCAL CLASSIFIED ADVERTISING RATES

16c per word
 2.00 minimum charge
 Use This Handy Chart To Figure Your Cost

Words	1 Issue	3 Issues
12 or Less	2 00	4 80
13	2 08	4 99
14	2 24	5 38
15	2 40	5 76
16	2 56	6 14
17	2 72	6 53
18	2 88	6 91
19	3 04	7 30
20	3 20	7 68

KEYED ADS (ads with answer coming to a Box Number, c/o Lancaster Farming) 50 cents additional

Ads running 3 or more consecutive times with no change billed at 20 per cent discount

Deadline Thursday morning at 9 of each week's publication

Lancaster Farming
 P O Box 366
 Lititz, PA 17543
 717-394-3047
 or Lititz
 717-626-1164

The following categories are available for your classified advertising

- Farm Equipment
- Silos & Unloaders
- Buildings & Supplies
- Grain Equipment
- Dairy Equipment
- Livestock Equipment & Supplies
- Cattle
- Horses & Mules
- Sheep & Goats
- Swine
- Artificial Breeding
- Hog Equipment & Supplies
- Poultry & Supplies
- Feed & Seed
- Fertilizer
- Plants
- Fruits & Vegetables
- Nursery
- Lawn & Garden
- Services Offered
- Custom Work
- Help Wanted
- Situations Wanted
- Business Opportunity
- Trucks & Trailers
- Autos
- Notice
- Lost
- Found
- Pets
- Household
- Miscellaneous
- Real Estate

FARM EQUIPMENT

AC 190XT Dsl Tractor
 Owatonna Stack & Mover
 NI 2 Row Picker-Sheller 325-329
 NI 705 Diesel Power unit w/767 Super Chopper
 NI 212 Sgl Btr Spreader
 NI 213 Spreader
ROY H. BUCH INC.
 EPHRATA
 717-859-2441

Wanted - 30-50' set of scales, prefer portable type, must be in good shape, 717-724-3012 bus 724-1045 res

For Sale - MF 750 combine with 6-row corn head & 14' grain platform Ph 215-347-1792

For Sale - Custom Built double chain, wooden conveyors & tapered board feeders for cattle and hog feeding systems M Rissler, Stevens RD 1, Pa 215-267-2244

IHC Farmall 656 diesel gear drive tractor with wide front, real good, \$5750. IHC Farmall 656 hydro diesel tractor with wide front, excellent condition, \$6950 Bill Wheeler, 412 Penn Ave., Oxford, Pa 215-932-4416

Crawler Tractor Parts.

New and Used Parts Available for Cat, Allis Chalmers, IHC, Case, John Deere and others

Rubber tired construction equipment parts available for Hough, Michigan, Galton and Cat Road Graders
VILSMEIER EQUIPMENT INC.

Route 309
 Montgomeryville, Pa 18936
 Phone 215-699-3533

HOG SLATS
 Self-spacing concrete from 4 ft to 12 ft lengths V.T. Petersheim, Box 315, Rt 2, Millintown, Pa 17059



FARM EQUIPMENT

For Sale - Ford 618 silage blower 4 wheel mounted Lily hay rake, like new 7' scraper blade with 3 pt hookup Stump Acres 717-792-3216 York Co

For Sale - Chisholm-Ryder snapbean harvesters with hydraulic dump wagons, reconditioned & painted 609-769 3183

Vermeer stump cutter, Wisconsin V-4 power, all hydraulic controls, \$4500

Wisconsin VH4 with clutch & pulley, electric start, good condition, \$650

VILSMEIER EQUIPMENT INC.
 Rt 309
 Montgomeryville, PA 18936
 Phone 215-699-3533

JD 2640 diesel tractor, like new, 1979 model, used only 195 hrs, \$15,500 Bill Wheeler, 412 Penn Ave, Oxford, Pa 215-932-4416

FARM EQUIPMENT

Wisconsin Engines For Sale

*V461D - 60 hp
 **VG4D - 40 hp \$1400
 *VH4D 33 hp \$1000
 *VF4D - 25 hp \$500
 *PHD 2 cyl w/elec start \$500
 *available with 4 to 1 clutch reduction
 **New, Used 1 hr 717-687-6553

1960 Massey Ferguson Work Bull 202 w/Davis Loader and M F Backhoe, 1145 Hrs Excellent condition \$7,500 215/269-1802 Day, 269/1327 Evenings

*** TRACTOR PARTS ***
 Up to 75% Savings
 ALL MAKES
 ALL MODELS

Crawler and Wheel Types NEW - USED - REBUILT PARTS SEND \$1.00 FOR SENSATIONAL NEW 1980 DISCOUNT CATALOG Surplus Tractor Parts Corp P O BOX 2125, Fargo, ND 58107

FARM EQUIPMENT

Harvestore forage wire, 1963 Ford F-500, 12' dump, good shape, 814-793-3874

For Sale - Ni uni system 702 gas power unit, 729A sheller, 727 husking bed, 3-row narrow corn head, 760 harvester with 3 row corn head & hay pickup in good working condition, stored inside Will separate 717-866-6048, Lebanon Co

7000 JD corn & bean planter, 4 row wide, dry fertilizer, insecticide monitor, 2 yrs old, \$4000 We can deliver 215-493-3040

6600 Ford row crop tractor, 1000 hrs, big tires & all extras, \$9250 We can deliver, 215-493 3040

Wanted - Wide front end for "706" Farmall tractor Phone 814-629-5174

Torque amplifier & clutch service for IH tractors Parts & service at fair prices 717-464-2874

New Danuser 3 pt hitch post hole digger, best offer 215-827-9352

1975 International 2500 Gas, w/Loader and Sims Cab w/wheat, 325 Hrs Excellent condition \$11,000 215-269-1327 evenings

FARM EQUIPMENT

For Sale - Farmall cub tractor with rotary mower, cultivator & plow, all in good condition Complete price \$2500 North'd Co 717-758-6221

For Sale - 2 row Stauffer transplanter, very good condition PH 717-665-3778

For Sale - Hobart 400 amp portable welder on tandem axle trailer, powered by a Chrysler 8 cylinder industrial motor with leads 717-345-4020

For Sale - Case (David Brown) model 990 tractor, 65 hp, 470 hrs with attached model 60 Case loader, excellent condition Also NH model 1012 automatic bale wagon, 56 bale capacity, like new 717-537-2370

For Sale - MF 44 corn head, \$3500 IH 4 row 3 pt cultivator, \$650 NH 770 harvester, \$3500 MH 82 combine, \$3000 Call 215-926-5177 days, 215-926-3243 evenings Berks Co

IHC 966 hydro tractor with factory cab, like new, fully equipped, \$12,500 IHC 1466 diesel tractor with factory cab, excellent condition, \$16,500 Bill Wheeler, 412 Penn Ave, Oxford, Pa 215-932-4416

FARM EQUIPMENT

For Sale - New International round baler, Ford 2 row cultivator 3 pt hitch house trailer axles 717-776-7724

For Sale - AC "G" with cultivator, excellent condition \$1395, AC forage wagon \$895, Oliver rake \$195, 717-548-2559

Metal shear 12"x1/4" cut, value \$17,000 using every day, must see in operating, heavy 11 ga 10' apron brake, 15 ton mechanical punch with motor, 215-286-5146

Model B AC Industrial Tractor w/side mower, belt pulley, and hydraulics \$975 717-6018

For Sale - JD H farm tractor, 17 hp, new transmission & engine, mounted plows & cultivators, excellent condition Will sacrifice 717-435 0979 after 6 P M

For Sale - Hesston 30-A Stakhand with hydraulic power pak, \$3500 Trade for #10 Stakhand Seneca County, NY 315-568-6168

For Sale - Int combine, model 205, 13' grain head, \$3500 offer NH hay rake model 256, new, \$1400 offer Oliver 602 hay baler, \$1500 offer 301-592-9594

STARLINE & VANDALE SILO UNLOADERS

SALES & SERVICE

RITCHIE CATTLE & HOG WATERERS

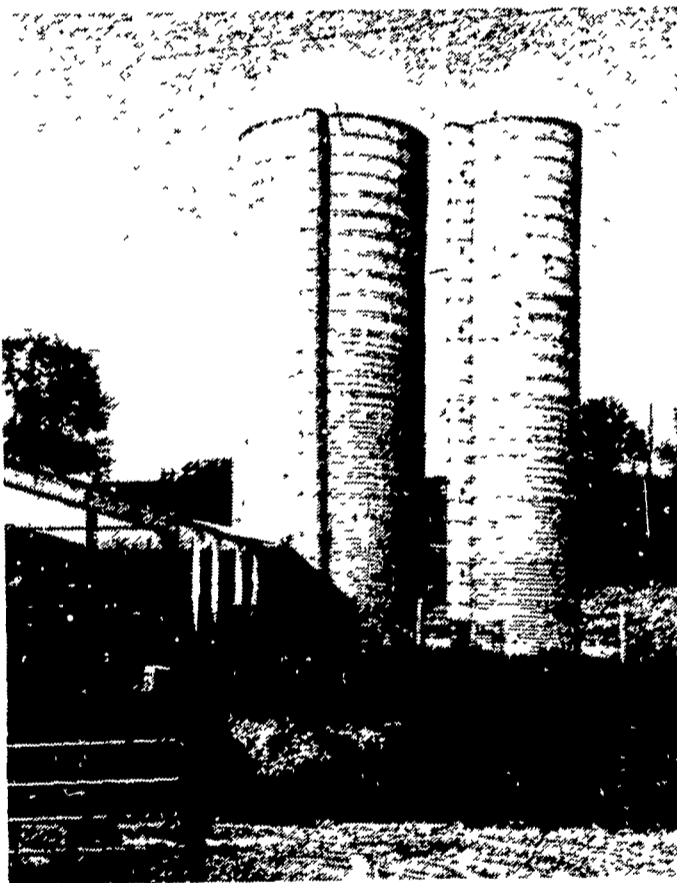
LANCASTER SILO CO., INC.

2008 Horseshoe Road - 2436 Creek Hill Road
 LANCASTER, PA 17601

"LANCASTER" BELT FEEDERS

TAPER BOARD FEEDERS

DOUBLE-CHAIN CONVEYORS

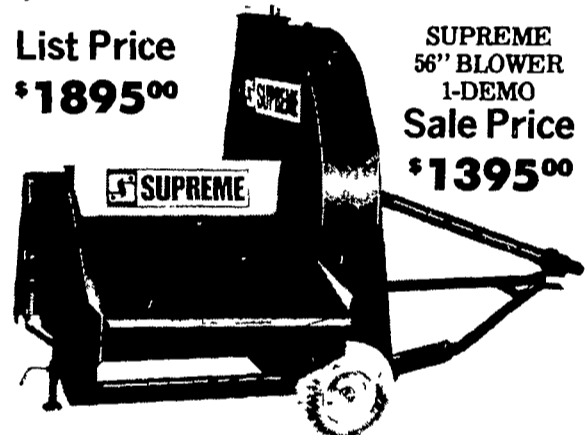


MANUFACTURER & BUILDER OF QUALITY WET-CAST CONCRETE STAVE FARM SILOS

CHECK LANCASTER SILO "SPECIAL" FEATURES

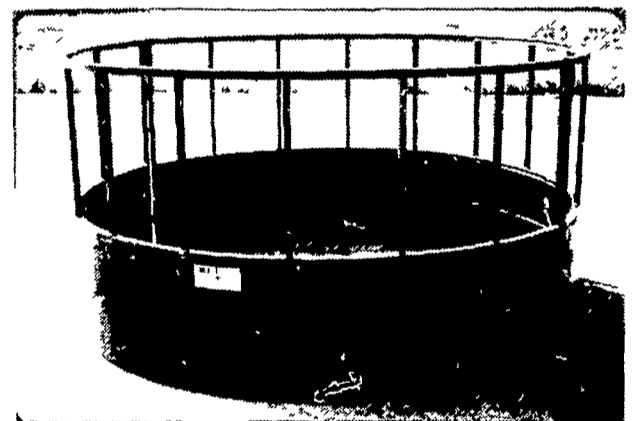
- ROOF -**
AVAILABLE AS ALUMINIZED STEEL OR COLOR
- CHUTE -**
AVAILABLE AS STAVE CHUTE OR ALUMINIZED STEEL
- RODS -**
ALL RODS 9/16" HI STRENGTH DICHROMATED COATED
- SPREADERS -**
HEAVY BOX BEAM CONSTRUCTION STRONGEST SPREADER AVAILABLE
- DOOR FRAMES -**
ALL DOOR FRAMES HAVE STEEL RODS MOUNDED IN TO INUSRE STRENGTH
- DOORS -**
TWO DOORS AVAILABLE REDWOOD 1 5/8" TONGUE & GROOVE HINGED DOOR & STEP REGULAR REMOVABLE PLYFORM DOOR w/ ONE PIECE STEP
- INTERIOR PLASTER -**
HAND TROWLED DOUBLE COAT PLASTER SPECIAL SAND & WATER-PROOF CEMENT GIVES SMOOTH, DURABLE FINISH

List Price
\$1895⁰⁰



SUPREME 56" BLOWER 1-DEMO Sale Price \$1395⁰⁰

WIDE, LOW HOPPER WITH SHAKER PAN
 Complete with P.T.O.



ROUND HAY RAKES - 2 PIECE
 18 Openings - Can use for regular or Large Bales **\$185.00**

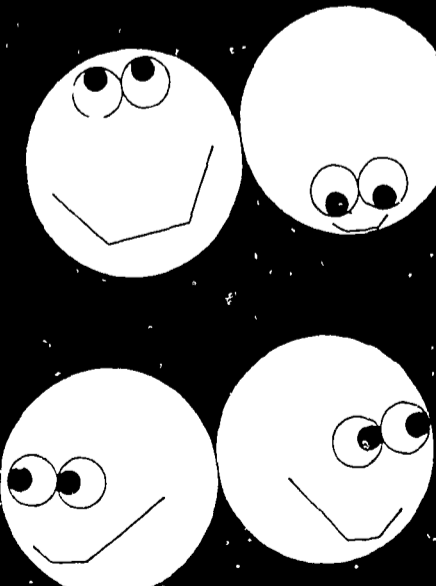
2"x8"x16" #2 Tile For Feed Trough-Bunks, etc.
 Cash - Picked up - \$.65 ea.

KEEP SILO CHUTE CLEAN - INSTALL A "KLEEN CHUTE" w/PLASTIC TUBE \$145.00

RECONDITIONED EQUIPMENT:
 1-Rebuilt Starline 12' Unloader w/Motor \$1595.00
 1-Rebuilt Starline 14' Unloader w/Motor \$1695.00
 1-Rebuilt Starline 16' Unloader w/Motor \$1795.00

ABOVE UNITS COMPLETE
 2-Used Badger Silo Unloaders \$1750.00
 1-Used Jamesway 20' Vol II Unloader \$2000.00
 1-Used 56" Supreme Blower w/P.T.O \$595.00
 1-Only new 56" Supreme Blower \$1395.00
 1-Diesel Power Unit w/Clutch \$5000.00

FOR COMPLETE INFORMATION, CALL:
 Larry Hiestand - Office - 717 — 299-3721
 Wayne Lloyd - Sales - 717 — 299-3722



DON'T LOOK ANY FURTHER!

YOU'LL FIND IT IN LANCASTER FARMING'S CLASSIFIEDS