

# WHAT'S NEW

## Ferrari Tractor

Narrow rows, close spacing and interplantings have created a demand for a tractor that is narrow enough to work in close spaces and yet still has adequate power and traction for all implements.

Ferrari answers this problem with the new model

95. Less than 38" wide, only 32" to the seat, and is narrower than most small tractors, yet has 33 H.P.

Ferrari engineers have created the model 95 for today's specialized needs. All 4 wheels are the same size and thereby offer the true 4 wheel drive with maximum utilization of power. The air-cooled diesel operates at all temperatures

without radiator, water pump or connecting hoses. A modular design makes for easy cylinder replacement and repair.

Air cooled diesels conserve fuel and operate with less down time.

The engine is far forward of the front axle which eliminates the need for extra front weights.

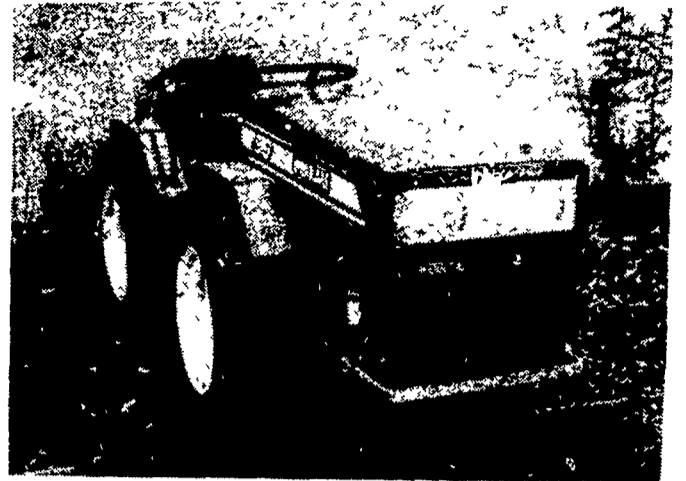
Articulated and oscillated steering provides an inside turning radius of 3'10" (outside turning radius is 7'6") and helps keep all wheels on the ground, even on rough terrain.

Power steering, category 1-3 point hitch, locking differential, front bumper, trailer hitch, front & rear lights, turn signals, horn and 2 speed PTO (540 and 900) are standard.

Low profile, narrow track, true 4 wheel drive and high power to weight ratio allow the farmers to plant closer, work rougher ground and get into the field under adverse conditions.

Ferrari has been making tractors since 1952 and is one of the largest specialized tractor manufacturers in the world.

For further information contact FERRARI INTERNATIONAL, INC., 145 W. Linda Vista Dr., San Marcos, California 92069. Phone (714) 744-5001.



New model 95 Ferrari tractor

## Rotary Gleaner Combine

**INDEPENDENCE, Mo.**—A new rotary combine, with the largest capacity of any combine on the market, and the ability to work in many types of crops and slopes, has been introduced by the Allis-Chalmers Corporation.

The new N7 rotary will join the line of GLEANER combines manufactured by the Combine Group of the company, and effectively marries the rotary concept with other GLEANER combine features like centerline design, two stage cleaning, tangential feeding and a concave stone ejection door.

The addition of the new model N7 gives Allis-Chalmers the longest line of combines available in the industry, with eight different models, three of which are rotaries, the Models N5 and N6 and the new N7.

"Besides the increased capacity of the N7, the new model contains all of the features of our previously introduced rotary units, including the ability to accommodate up to a 12 row corn head; the capability of working in many types of crops such as corn, wheat, sorghum, barley, rye, oats, sunflowers and flax; as well as being less sensitive to slopes," Roy W. Uelner, executive vice president of Allis-Chalmers Corp., said. "Yet the N7 accomplishes all of this within the same physical package as our conventional Model L GLEANER combine. Traditionally, such capacity increases have been achieved by substantial increases in machine size."

The 315 bushel capacity N7 has 6, 8 and 12 row corn heads. Grain, floating cutter and windrow heads are available in 15, 20 and 24 ft. versions.

The grain headers are equipped with twin sickle

drive enabling sickle speeds in excess of 600 rpm, thereby allowing faster ground speeds to take advantage of the high harvesting capacity of the machine. Vibration from the sickles has been dampened by driving the sickle bars from each end, opposing each other.

The exclusive 12 row corn head is the largest available on any combine, and cuts a full 30 ft. swath at each pass. The corn heads have individually mounted row units, and are designed to hug the ground to get under and pick up any down or tangled crop. In addition, the gathering sheets are sloped to minimize hair pinning and whipping of downed stalks.

The N7 is powered by an Allis-Chalmers 685 HI turbocharged and intercooled diesel engine rated at 270 hp at 2200 rpm. The 516 cu. in., six cylinder engine has a counter balanced crankshaft, four valves per cylinder, opposed exhaust and intake manifolds and many other features that add up to constant power even in the most rugged conditions.

Infinite ground speeds up to 20 mph through 4 forward or reverse ranges are provided by the HYDRO-TRACTION transmission with 7.25 x 7.25 cu. in. displacement that gives smooth, easy speed changes.

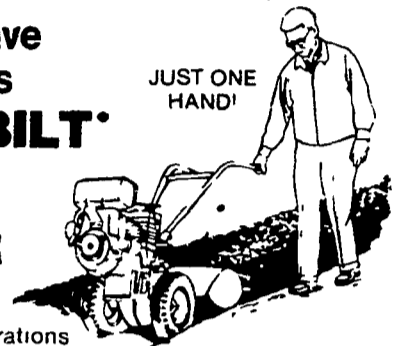
Allis-Chalmers rotary units have the largest fuel

tank in the industry at 150 gallons and an unloading tube that empties more than two bushels per second. It takes approximately two minutes to empty the entire 315 bu. bin. That means fewer and shorter interruptions in the field harvest.



Yes, we have the famous **TROY-BILT® ROTO TILLER**

JUST ONE HAND!



- Free Demonstrations
- Trade-ins welcome
- Financing Arranged

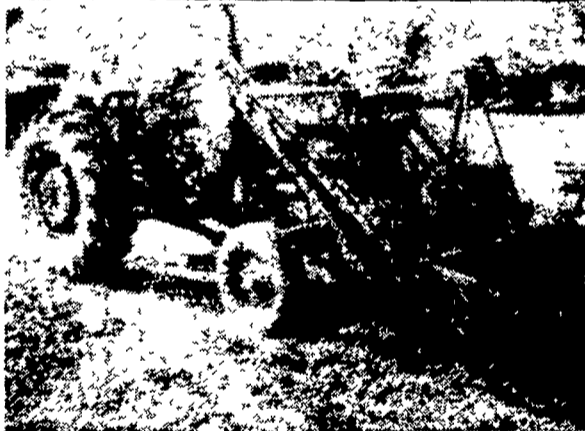
- Factory Authorized Sales & Service

**ALL MODELS IN STOCK**

Authorized Troy-Bilt Dealer

**Hollinger's**

717-738-1131 FARM MARKET  
1755 WEST MAIN ST  
1 mi. west of Ephrata on Rt. 322



### USED TRACTOR

MF 165 Gas with Sauder Loader ..... **\$3950**

### USED TRACTORS

MM 670 Diesel \$3,850.00  
IHC Super C, fast hitch w/2 bottom plow 1,675.00

### USED PLANTER SPECIALS

John Deere 494 \$850.00  
Oliver 4-row Plate 1,250.00

### USED HARVESTER SPECIALS

NH 880 2-row narrow row head \$3,650.00  
NH 717 w/1-row head 2,195.00  
NH 717 1,175.00  
Fox 1000 RPM PTO w/2-row corn hd & Pk up attach 1,495.00

### USED BALER SPECIALS

JD 24T w/#30 thrower \$2,450.00  
NH 275 w/thrower 2,450.00  
NH 268 1,350.00  
JD 24T w/#2 ejector 1,650.00  
AC 444 850.00  
John Deere 14T 750.00  
John Deere 14T w/ejector 450.00  
New Holland 68 550.00

### USED MOWER CONDITIONERS HAYBINES

New Holland 1495, SP 12' w/partial cab, real sharp \$14,750.00  
New Holland 479, as is 2,150.00  
Mower Conditioners-NH 469 2,550.00



### USED DISC

John Deere 210, 11'-5" ..... **\$3250**

### USED SPREADERS

NH 791 \$4,650.00  
JD 40 w/hydraulic end gate 1,050.00  
NH 510 single beater 850.00

### USED GRAIN DRILLS

Co-op 15x7 Fert Grain Drill w/grass seed attach \$750.00  
Ontario 15x7 650.00

### USED TILLAGE SPECIALS

Bush Hog 14' Disc \$2,450.00  
Oliver Disc Harrow 1,175.00  
Brillion 12' Roller Harrow 1,450.00  
Ford 4-16" Plow 950.00  
JD KBA 32x18 Wheel Carrier Disc 875.00

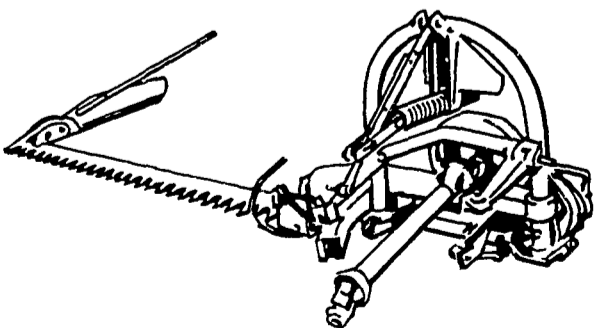
### USED COMBINE SPECIALS

Cockshutt 427 w/Power Steering & 10' Platform \$1,450.00  
JD 55 Corn Soybean Special 12' head 9,700.00  
JD 55 Diesel w/cab, 12' platform 7,500.00

### MISCELLANEOUS

John Deere 148 Loader \$2,200.00  
John Deere #58 Loader A-1 Shape 1,800.00  
John Deere #18 1-row Corn Picker 950.00  
New Set 18.4x30 Snap on Duals w/New Goodyear 6 Ply Tires 1,050.00  
Used NH #8 Crop carrier 1150.00

**FOR A CLEAN SWEEP  
SEE THE MODEL 501  
GRASS MOWER**



**ALLEN H. MATZ, INC.**

505 E. Main St., New Holland  
Ph: 717-354-2214

SERVING THE COMMUNITY  
THIRTY-ONE YEARS  
LANC. CO.'S OLDEST FORD DEALER



**Evergreen Tractor Co. Inc.**

30 EVERGREEN RD., LEBANON, PA 17042  
PHONE (717) 272-4641

AUTHORIZED  
SPECIALTY NEW HOLLAND  
PARTS and SERVICE