

Ask the VMD



Leon Riegel Tim Trayer Edgar Sheaffer

If you have a question you would like answered by the team from Valley Animal Hospital, send it to Ask the VMD, Box 366, Lititz, Pa. 17543. Questions will be kept anonymous on request.

What percent chance is there of getting a palomino foal in any breeding? Is there a best-chance combination to insure success? What about a best color cross?

Dr. Sheaffer comments:

It's important to remember that a palomino horse refers to the horse's color and not a specific breed.

Almost any breed may have an occasional horse with the palomino color. However, certain breeds carry more of the genes for this color than others.

Much of the known genetic information about the palomino comes from studies of the Quarter Horse breed.

In order for a horse to be considered a palomino, the body color must be close to the color of an untarnished U.S. gold coin. The mane and tail must be white with less than 15 percent dark hairs mixed in.

Along with the color

criteria, the horse must stand over 14 hands and weigh at least 900 pounds when mature.

If a horse meets all of the above standards, it is eligible for registration as a palomino.

The palomino color is a heterozygous condition, meaning that the horse has a dominant and a recessive gene for coat color.

This gets us into the realm of genetics, based on the laws of probability. A complete genetic explanation of the palomino trait inheritance is too complex a subject to try to discuss in detail.

To try to simplify things, let's look at some of the possible color combinations and the chances of breeding a foal with the palomino color.

A very light palomino is called a 'creamello'. These horses have light skin and one or two blue eyes.

Creamellos are distinctly different from Albinos which have pink skin, white hair and may have pink or blue eyes.

Some geneticists believe that the creamello has a homozygous condition for coat color. In other words, they have two recessive genes for color.

Theoretically then, breeding a sorrel (or chestnut) to a true creamello would give a palomino foal 100 percent of the time. In actual practice, however, this does not always hold true, probably because we do not usually know the exact genetic make-up of the horses we are breeding.

If you are breeding two palominos to each other, the foal has a 50 percent chance

of being a palomino, 25 percent chance of being a sorrel, and a 25 percent chance of being creamello.

By the laws of probability, two out of four foals should be palomino every time two palominos are mated. This would also be the case if you breed a palomino to a sorrel.

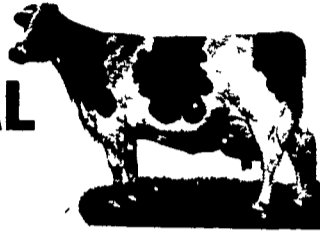
It has been found that when breeding two sorrel Quarter Horses, the foal will have the palomino color 25 percent of the time. Of course, this theory based on probability will vary according to the family lines involved in the mating.

Pot luck for palominos? A reader asks:

K. Allen Manheim

AUCTION

EVERETTS COMPLETE FARM DISPERSAL



Horseheads, New York

Having sold our farm we will sell cattle & machinery at Public Auction

SATURDAY JUNE 7

At 11:00 A.M.

Located: 3 mi. north of Horseheads on Middle Rd. adjacent to Soaring Eagles Golf Course, 10 mi. south of Odessa

54 REG. & GRADE CATTLE 54 40 MATURE, 3 18 MO. OPEN HFRS. 8 YRLING HFRS., 3 HFR. CALVES BLOOD & T. B. TESTED READY FOR INTERSTATE-PREG. CKD.

24 Brown Swiss - (8 Reg) - 5 fresh & close, 10 due late summer & early fall, bal. are later. Few sires represented: Norvic Lilason's Beautician, White Cloud Doreen's Delegate, Rancho Rustic My Design. This has been one of the better Brown Swiss herds, many of the Grades are from Reg. dams. Mr. & Mrs. Everetts owned & showed the Nat'l Grand Champion Cow - Maple Lawn Wiv's Vista 450556 - EX, Sire-Viscount. These cows all show top breeding.

30 Holsteins - (12 Reg.) Cows purchased as hfrs. from the Roger Ganung herd. This herd was the 3rd highest DHIA herd in the county, 5 fresh & close, 11 bred for late summer & early fall, bal. due later. These cows all show good breeding, most all have good udders, some 1st, 2nd, & 3rd calf hfrs., fresh cows show milk and will improve with good feed - haven't had silage or grain since late winter, adapted to stanchion & free stall.

Milking Equipment: 2 Surge pumps; Surge Power Panel Mod. 20085; Surge Tongonoxie pulsator; Surge Electrobraun washer; 2 stainless vats; glass bowl; 6 Surge units.

Farm Equipment: Case 970 D. w/cab (radio & air); Case 930 D. WF. Comfort King; Int. 340 D. NF.; Case 1530B skid loader w/2 buckets; Case 14" disc; Case 4-16" cushion trip smi-mt. plow; N.H. 275 baler w/thrower; N.H. 850 round baler; N.H. 80 bale mover; N.H. 26 blower; N.H. 36 flail chopper; N.H. 479 haybine; Gehl 11TR-600 chopper w/2 R. narrowhead, H A 900 pick-up head; N.H. #15 r. gr. w/lamco thrower rigging; Int. 51 unloading wgn., floatation tires, 6' sides & roof; Papec unloading wgn., 8t. r. gr.; Dion unloading wgn. w/Gehl 80 6t r. gr.; Farmhand wheel rake; Sno-Co 40' elev. w/mtr.; N.I. 214 spreader; Clay honey wgn.; Brillion 10' cultipacker; J.D. 495 A planter w/insect & herb boxes; Int. 3 pt. 4-16" plow; Int. 2-14" quick-hitch plow; Int. weed chopper; Yellow Devil sprayer; Delmhorst hay & moisture detector, Mod. F-4; Int. 15 disc drill; 3 pt. post hole digger; Jamesway barn cleaner unit; Patz cleaner unit; hyd. dump trailer; Triumph front snow blade w/blower; 4 Badger elec. waterers.

Misc. & older items; Ford 600 w/new 292 eng.; 18' steel trk. deck on Chassis w/4 new 8-25-20 tires; new 11-25-36 tire; 260 gal. fuel tank; castle sanitizer; semen tank; V.W. Parts; Cutter; 3 buggies; Democrat wgn.; old wood wheel wgn.; 4 ox yokes.

Owner:

MR. & MRS. FLOYD EVERETTS

Terms - Cash or good check Lunch

Sale managed by

Robert M. Shaylor Sales

515 Elmira St. Troy, Pa. 717-297-3278
Reputable Sales Service
Licensed - Bonded

PUBLIC SALE

OF ANTIQUES AND HOUSEHOLD GOODS

From "The Buck" take Route 372 West 5 miles to River Road. Go North to corner of River Road and McKelvey Lane to sale

SATURDAY, JUNE 7, 1980

9:30 A.M.

Maytag washer; Sears Coldspot 14 cu ft refrigerator frost free, base cabinet, Seaverns piano and stool; rugs; 9x18; 9x12; and others, throw rugs, table lamps; 3 pc bedroom suite, bed room suite w/single bed; odd bed, wardrobe, chest; mirrors, occasional chairs, comforts; blankets, bed linens; cane seated chairs; Hoover sweeper; what-not-shelves, 7 folding chairs; other tables, ironing board; fireplace set & 2 sets of andirons, living room suite; 1973 Buick Centurian, 2 door, hard top, AM/FM stereo, all power

ANTIQUES

BENCH TABLE AND HANGING LAMP

Marble top wash stand and bureau; desk (Butler) marble top occasional table; nice large copper kettle; old mantle & wall clock; 2 hanging wall racks metal and wooden hangers; dry sink (needs repair) large dinner bell, wagon seat; apple peeler; 2 sets butchering ladles, 5 large butcher forks; 2 brass face spring scales; kerosene lamps and globes; brass horse w/Indian rider; lanterns; old platform rocker, Copper wash boiler, Kerosene lamp on stand; 2 toilet sets (not complete) old dishes (Germany)

KAS WARDROBE

Round oak ex table w/5 boards; 6 spindle back plank bottom & 6 - 1/2 spindle back plank bottom, old bureau, 2 slaw cutting boards; rope & spool bed; wash stand; round drop leaf table; old wooden chest, side saddle; high kitchen stool; iron boot jack; flat irons; kerosene room heater; 2 & 3 burner kerosene stoves; wicker wash basket & other baskets; wicker table & hamper; old table lamps; wood under the bed chest buffet w/mirror; wash board; rolling pin; individual salts; bottles; butter dish; 2 strings bells; food chopper; Singer treadle sewing machine, wooden commode.

Butchering tools; #32 & 22 meat grinder; sausage press scrapers, turn chain, crocks 1 to 16 gallons-gamble sticks, iron pot w/3 feet.

TIN WARE

Bread pans; bread box; lard cans; 2 qt ice cream freezer; pie pans & others.

Apple butter stirrers, old picture frames; old buttons; book case; space heater; Victrola & records, trays; flour bin; old quilting frame; wings for a 1923 Buick car; shoe lathe, old churn; large mirrors; large picture of Holy Family; berry boxes, old radios and television, Ukelin; 6 qt ice cream freezer; quarts; pints; glass jugs; books, many other articles

Numerous Amount of Glassware.

Some cut and pressed.

Terms by:

JOSEPH S. MCKELVEY

284-4835

J. Everett Kreider, Auctions.
Steve Petersheim

Food stand by St. Catherine Catholic Church
Not responsible for accidents

Laurel Auction Block may open early

LAUREL, Del — The Laurel Auction Block is scheduled to open around July 10 this year, but if there's enough produce available for buyers, it could open earlier, reports University of Delaware extension vegetable specialist Mike Orzolek.

Block manager Dave Horton has announced that the market is expanding the line of vegetables it will handle this summer.

Besides the usual watermelons and cantaloupes, he expects to be auctioning peppers, squash, cucumbers, honey dews, and pumpkins.

These should be available in larger quantities during 1980 as Delmarva growers increase acreage of these commodities.

The normal closing date

for the Laurel Block is September 15. If there are enough melons or other crops available for buyers, it will stay open longer than that this year.

Prospects look good for watermelon and cantaloupes in the Delaware-Maryland area, reports Orzolek. Quality should be excellent barring any heavy mid-summer rains.

Delaware's vegetable crop acreage is up five percent over 1979 and growing conditions have been good to excellent for early plantings of summer-harvested vegetables.

Buyers and/or growers interested in knowing more about schedules and sales arrangements at the Laurel market should call Block manager Dave Horton at 302/875-3147 (day) or 302/629-6371 (night).

PUBLIC AUCTIONS

SAT, AUG 2 - Public Auction of Farm Equipment Located 1 mile North of Lititz, 1/4 mile East of Rt 501 at 304 E Newport Rd Lititz, Pa Sale by Mrs H Richard Hershey John E & Paul E Martin Auctioneers

SAT, JULY 5 - 9 A.M. Public Auction of Real Estate Household Goods Farm Equipment Construction Equipment Building Plumbing & Electrical Supplies Location Take Rt 422 East from Lebanon, Pa to Myerstown, Pa then take Rt 645 North to Burkholder's Butcher Shop then turn left onto Rosebud Rd to Houtz town Rd then left to farm on left Sale by Isaac B & Melvin B Martin DBA Martin Builders John E & Paul E Martin Auctioneers

Northeastern 4-H Club to practice

MT. WOLF — The Northeastern 4-H Club held its May meeting at the Starview United Church of Christ.

The meeting started with a brief update on the York 4-H County Council. The 4-H will participate in a local parade.

Our program was presented by Fabienne Lanst, a Northeastern High School exchange student. She presented some slides.

The next meeting will be at the Northeastern High School track field to practice for the 4-H Olympics. Reported by Lisa Hoover.



GAP AUCTION

FRIDAY EVE., JUNE 6

5:30 P.M.

Located off Route 41 - Lancaster Avenue opposite Turkey Hill Minit Market - Cross RR Bridge

ANTIQUES AND HOUSEHOLD GOODS

SOLD AT EVERY AUCTION.

CONSIGNMENTS ON MONDAYS

FROM 8 00 A M to 7 00 P M

OTHER DAYS BY APPOINTMENT

Call us for pick up service

IRA STOLTZFUS & SON, Auctioneers

442-4936 or 442-8254

CONDUCTORS ALL TYPES PUBLIC SALES