

Berks Co. DHIA

(Continued from Page C19)

Clarence B Kulp					
#66 H	5-7	305	18,008	717	
#89 H	4-10	305	20,745	704	
Larry E Phillips					
#158 H	0-0	305	17,230	720	
Ernest O Miller					
#406 H	4-9	305	18,006	659	
Lynn Acres & Dietrichs					
Jean H	3-5	305	19,135	700	
Ontelynn Acres					
#78 H	5-0	305	20,293	793	
#86 H	4-9	305	24,787	904	
BRB Farm					
Sandra H	5-1	305	17,409	677	
Clarence E Kreider					
#21 H	4-7	305	18,681	719	
Barry L Burkholder					
Fern H	6-9	305	18,286	659	
R Bernvell Burkholder					
Gail H	8-10	305	15,691	652	
John C Bartsch					
32 Judy H	5-3	305	21,681	714	
71 Dandy H	4-7	305	20,965	945	
E Daniel Leatherman					
Marla H	5 4	305	16,141	660	
Glen High					
Bobby H	6 1	305	20,573	879	
Norman Z Nolt					
Bessie H	9-9	305	17,706	651	
Etta H	4-11	305	20,783	693	
Julia H	3-8	286	18,807	675	
Thomas Wisser					
Ideal H	5 7	305	20,117	667	
Philip & Tom Werley Jr					
#20 H	6-7	303	16,942	668	
#54 H	6 7	300	16,383	723	
#148 H	4-7	305	16,863	681	
#128 H	5 7	305	16,242	662	
Robert E Kopfer					
#359 H	0 0	305	22,693	803	
Keith E Hertzog					
Jelly H	7-4	305	20,297	815	
Janet H	9-5	305	16,811	739	
Heindel Farms, Inc					
Becky H	3-4	305	21,442	770	
Harvey C Krill Jr					
Lime H	8 2	305	20,435	710	
Marie H	6-4	305	24,147	809	
Donald Burkholder					
#65 H	4-0	305	19,311	710	
Win Dale Farm					
New J	3-4	305	12,164	666	
Jaimore Farms					
Molly J H	8 8	305	18,539	689	
Megan H	5 0	278	16,271	665	
Dozie H	4 1	305	16,540	676	
Blue Mtn Academy					
#359 H	14 7	305	20,667	697	
Clarence C Sattazahn					
26Lynn H	8 0	305	20,020	658	
Earl W Latshaw					
Candy H	7 3	305	16,110	659	
Yost Brothers					
#24 H	5 2	305	21,490	738	
#21 H	5-0	305	17,254	816	
#176 H	3 11	305	19,592	655	
#200 H	3 8	305	20,565	703	
Teen Chal Farm					
#40 H	7 7	305	20,141	719	
#121 H	5 5	305	22,204	682	
#160 H	0 0	301	15,698	656	
#126 H	3 10	305	15,860	659	

The Milk Check

TOM JURCHAK
County Agent



More Proposals
Recently I mentioned proposals for changes in Order 2 that would increase the transportation credit, the negotiated hauling charge and the zone differentials inside the 201-210 mile zone, as well as expanding the market area into northeastern Pennsylvania.

There's another one made by Eastern Milk Producers that certainly will have wide appeal among farmers.

It's a proposal for partial payments for your milk received by a handler during the first 15 days of the month.

According to the proposal, the payment would be made at not less than the Class II price on or before the 10th day of the following month. Final payments would be made, as now, on or before the 25th day of the following month.

Some handlers make voluntary partial payments now (Garden State Farms has paid weekly) but these are not required under Order 2, only under Pennsylvania Milk Marketing Board regulations.

The system could work because the Class II price is announced by the 5th day of the following month. So payment could be made by the 10th day for 3.5 per cent butterfat

Then, in the final payment on the 25th day, adjustments would be made for butterfat test, transportation differentials or anything that affects an individual producer's price

It would mean that proprietary handlers buying milk from co-ops would also have to make partial payments to the co-ops as well as their own producers. It would also reduce the time lag for non payment by handlers and include a charge for late payments

Handlers generally may not like the idea because there's an added cost in the extra check writing. And they'll have less of your money to use during the 55 days you're waiting for the final payment.

However, it's nothing new in federal milk marketing orders, and all but seven now require some type of partial payment.

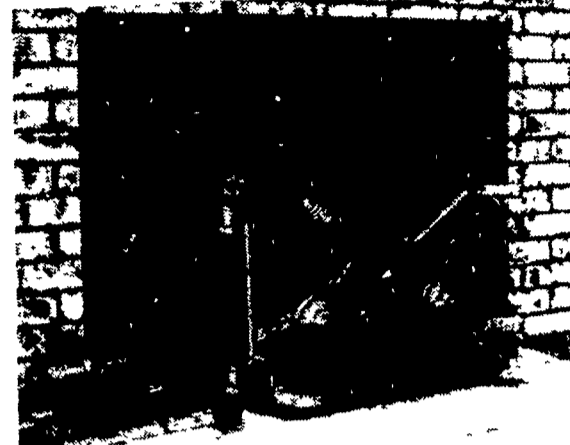
In fact, Order 40 in Southern Michigan has a proposal to consider from the Michigan Milk Producers Association that would require three payments a month by handlers.

Right now it's only a proposal and we'll have to wait for the announcement to learn if it will be included in Order 2 hearings. Just don't call it an advance payment as I did or some Eastern member will straighten you out.

Additional proposals on

the market area expansion were requested by the Market Administrators in Order 2 and Order 4 with a deadline of May 2 so look for some action soon. In any case, it looks like a very busy summer shaping up for important changes in Order 2, so stay alert.

ALASKA KODIAK WOODBURNERS



FIREPLACE INSERT

- Fits into your existing fireplace complete with all parts, including blower and instructions for easy installation
- Specifications (Large)
Burning time 10 to 12 hours Heating capacity with blower, 2,500 Sq ft, without blower 2,000 Sq ft
Fireplace minimum opening 23½" high x 32¼" wide x 15½" deep

Effective Now Factory Authorized Super Sale of 1980

MANY OTHER MODELS AVAILABLE



CHESTER B. NOLT

30 S. Hershey Ave., Bareville
Leola, Pa. 17540
717-656-6898

STORE HOURS:

Closed Mon & Tues, Open Wed, Thurs, Fri 10 to 8,
Sat 10 to 4 Other hours by appointment

OPEN HOUSE

MARTIN AG FUEL SYSTEM

COMING SOON

As soon as all the governmental red tape & details are completed, we will be having an OPEN HOUSE on a farm in Lebanon County showing the NEW MARTIN AG FUEL SYSTEM in operation with trucks, tractors and furnace running on ag fuel.

WATCH FOR FUTURE ADS GIVING TIME, PLACE, DIRECTIONS & MORE DETAILS

Please don't ask to see the equipment which is operating now, before Open House. We are too busy getting ready and setting up production. Thank you.

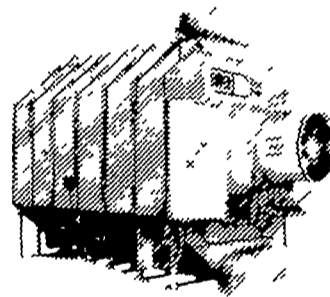
Martin Ag Fuel System produces 160 Proof Ethanol (alcohol) from Corn

- Completely Automatic - Continuous Flow with safety back-up, testing instruments and supplies.
- No Operator needed - Nothing like it. Patents Pending.
- Very low operating cost - Approximately 50¢ gal. considering corn at \$3.00 bu. and the value of the high protein fuel. (mash)
- Various sizes from 25 to 5000 gallons per day capacity.
- Optional Equipment - Mash dryer, small hammer or roller mill, prefab insulated building, dry and high moisture grain storage equipment, grain storage augers, fuel tanks and pumps.

MARTIN DISTRIBUTORS, INC.

RD 1, LEBANON, PA 17042
PHONE 717-866-4906 or 717-866-4555

SAVE up to 50% on energy costs!



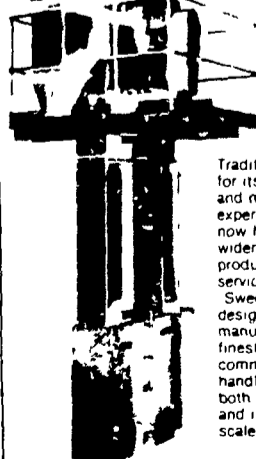
SUPER B

STAGE CONTROLLED[®] AUTOMATICS

Sweat[®] Drying
Set the dial Flip the switch
Forget it

Silver-Sweet
Galvanized Elevator Legs

When You Care Enough To Install The Very Best.



Traditionally known for its Quality Line and many years experience—Sweet now has an even wider range of products and services for YOU. Sweet people design and manufacture the finest farm and commercial material handling equipment both on a national and international scale.

SWEET MANUFACTURING COMPANY
1111 W. 11th St., Dept. 222-6878
Wichita, KS 67201

THOMAS FARM SYSTEMS, INC.

2025 Horseshoe Rd.
Lancaster, PA

717-299-1706

CLIP & MAIL TO

THOMAS FARM SYSTEMS, INC.
2025 Horseshoe Rd., Lancaster, PA

Please call About _____

Name _____

Address _____

City _____

State _____

Zip _____

Phone _____

G-5-31