

# Chester Co. DHIA

(Continued from Page C15)

|                   |    |       |      |      |     |      |
|-------------------|----|-------|------|------|-----|------|
| Arthur D Harshey  | 3  | 49 1  | 88 9 | 39 5 | 4 1 | 1 62 |
| Edgar Miller      | B3 | 42 6  | 93 3 | 44 3 | 3 6 | 1 61 |
| Delphi Farms      | 3  | 80 7  | 86 4 | 45 5 | 3 5 | 1 61 |
| Daniel Stoltzfus  | G3 | 41 2  | 91 0 | 44 4 | 3 6 | 1 61 |
| Kimberton Fm      | 2  | 70 9  | 80 1 | 33 1 | 4 8 | 1 60 |
| Richard Hostetter | B3 | 83 1  | 87 8 | 43 0 | 3 7 | 1 58 |
| J & L Stanton     | B3 | 23 0  | 84 2 | 42 9 | 3 7 | 1 58 |
| Horace Prange     | B3 | 51 0  | 87 4 | 42 7 | 3 7 | 1 57 |
| S & M Matthews    | B3 | 27 0  | 93 5 | 41 3 | 3 8 | 1 57 |
| Mildred Seeds     | 4  | 13 9  | 81 5 | 30 3 | 5 2 | 1 57 |
| R & S Staner      | 2  | 43 4  | 91 0 | 32 4 | 4 8 | 1 56 |
| Samuel B Acker    | B3 | 188 3 | 91 8 | 46 9 | 3 3 | 1 56 |
| Robert H Herr     | B3 | 36 0  | 90 4 | 41 9 | 3 7 | 1 55 |
| Kulp Bros         | G3 | 86 1  | 84 0 | 39 0 | 3 9 | 1 54 |
| Elvin M Rohrer    | B3 | 55 6  | 96 2 | 40 5 | 3 8 | 1 54 |
| Beiler & Barlow   | 3  | 41 2  | 77 4 | 41 0 | 3 8 | 1 54 |
| Jonas E Stoltzfus | 3  | 34 8  | 88 3 | 42 8 | 3 6 | 1 53 |
| Aaron Burkholder  | B3 | 44 0  | 84 4 | 35 1 | 4 4 | 1 53 |
| Harvey C Waltz    | B3 | 87 3  | 82 9 | 40 5 | 3 8 | 1 53 |
| Rothenberger Bros | B3 | 127 9 | 87 6 | 41 8 | 3 7 | 1 53 |
| Dennis Bush       | B3 | 126 8 | 85 5 | 44 6 | 3 4 | 1 53 |
| Elam Petersheim   | 3  | 76 6  | 87 1 | 49 4 | 3 1 | 1 52 |
| H & H Brown       | B3 | 140 4 | 92 2 | 38 7 | 3 9 | 1 52 |
| G Strohmaier      | B3 | 90 0  | 82 4 | 38 5 | 3 9 | 1 52 |
| Newton Evans Jr   | 3  | 83 7  | 88 2 | 44 0 | 3 4 | 1 51 |
| S Stoltzfus Jr    | G3 | 32 0  | 88 0 | 41 4 | 3 6 | 1 51 |
| Harold J Ranck    | 3  | 35 4  | 88 1 | 40 2 | 3 8 | 1 51 |
| Donald H Windle   | B3 | 138 9 | 92 0 | 39 5 | 3 8 | 1 50 |
| Harvey Reiff      | B3 | 43 0  | 82 2 | 37 2 | 4 0 | 1 50 |
| Charles Stowe     | B3 | 44 6  | 92 9 | 38 8 | 3 9 | 1 50 |
| Harold Kulp       | 1  | 36 6  | 89 3 | 37 3 | 4 0 | 1 50 |

Top cow for milk and fat was owned by David Windle  
Top herd was Melvin Stoltzfus

| OWNER NAME OR NUMBER      | DAYS IN MILK | LBS. MILK | % FAT  | LBS. FAT |      |
|---------------------------|--------------|-----------|--------|----------|------|
| David Windle Tulip        | 3            | 305       | 25,603 | 4 0      | 1024 |
| Mrs John B Hannum 109     | 3            | 305       | 22,625 | 4 4      | 1003 |
| Edwin C Todd Dolly        | 3            | 305       | 23,899 | 3 9      | 908  |
| Newton Evans, Jr 15       | 3            | 305       | 18,724 | 4 8      | 897  |
| Jonas E Stoltzfus R Queen | 3            | 305       | 21,230 | 3 9      | 837  |
| Heidi                     | 3            | 305       | 16,899 | 4 2      | 709  |
| Elmer A Mast Win          | 3            | 305       | 23,362 | 3 5      | 807  |
| Wilma                     | 3            | 305       | 19,472 | 3 9      | 750  |
| Ann                       | 3            | 305       | 18,829 | 3 8      | 709  |
| Richard Proud & Son 167   | 3            | 305       | 17,732 | 4 6      | 807  |
| 159                       | 3            | 305       | 22,077 | 3 3      | 731  |
| James V Yale 48           | 3            | 305       | 20,777 | 3 8      | 796  |
| 3                         | 3            | 305       | 21,704 | 3 6      | 791  |
| Ardrossan Farms Rose      | 1            | 305       | 20,493 | 3 8      | 782  |
| Pearlma                   | 1            | 305       | 18,851 | 3 8      | 721  |
| Sumaam L                  | 1            | 284       | 17,327 | 4 1      | 718  |
| X Ruby 2                  | 1            | 305       | 18,941 | 3 7      | 700  |
| J Raymond Harnish Beth    | 3            | 305       | 20,481 | 3 8      | 778  |
| Jody                      | 3            | 305       | 23,277 | 3 1      | 714  |

|                           |   |     |        |     |     |
|---------------------------|---|-----|--------|-----|-----|
| Lester Eby Tilly          | 3 | 305 | 22,018 | 3 5 | 768 |
| John R Groff Pagmar       | 3 | 305 | 15,809 | 4 8 | 763 |
| H & R Mason 10 G          | 3 | 305 | 19,563 | 3 9 | 756 |
| 99 B                      | 3 | 305 | 16,040 | 4 6 | 740 |
| Donald H Windle 192       | 3 | 305 | 18,265 | 4 1 | 753 |
| Harold Umble Dinah        | 3 | 305 | 18,161 | 4 1 | 752 |
| Ben Beiler & Barlow Leila | 3 | 305 | 19,496 | 3 8 | 748 |
| Marsha                    | 3 | 232 | 15,738 | 4 5 | 701 |
| John M Umble Minnie       | 3 | 305 | 19,203 | 3 9 | 747 |
| Herman Stoltzfus Ivy      | 3 | 305 | 21,864 | 3 4 | 741 |
| David Walton Georget      | 3 | 305 | 18,253 | 4 1 | 740 |
| Kauffman Bros Paula       | 3 | 305 | 22,091 | 3 3 | 730 |
| June                      | 3 | 305 | 19,198 | 3 8 | 720 |
| Henry S King Ella         | 3 | 305 | 18,026 | 4 0 | 726 |
| John E King El Cora       | 3 | 305 | 16,696 | 4 3 | 722 |
| Walmoore #3 423           | 3 | 305 | 22,046 | 3 3 | 719 |
| Walmoore 842              | 3 | 305 | 18,000 | 3 9 | 706 |
| Samuel B Acker 468        | 3 | 305 | 21,026 | 3 4 | 705 |
| Harold B Kulp Bell        | 1 | 296 | 17,498 | 4 0 | 701 |

**IT'S MAGIC**  
How quickly  
You Get Results  
From Our  
Classifieds!

PHONE  
717-394-3047  
or 717-626-1164

## Spring Sale

# \$100.00 Off

SUGGESTED RETAIL PRICE  
ON ALL MODELS OF FISHER  
STOVES IN STOCK

**BUY NOW BEFORE THE FALL INCREASES AND SAVE**

## Fisher Stoves

### Bowman's Stove Shop

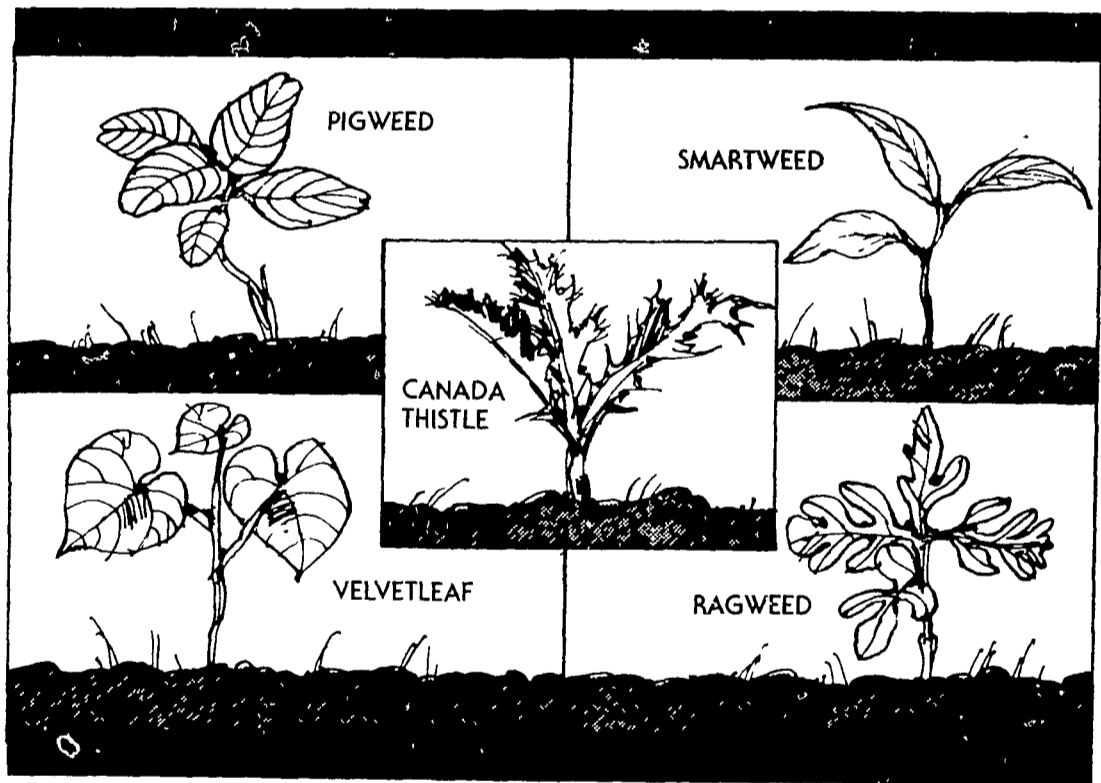
R D 3, Napierville Road Ephrata, PA 17522  
Follow the signs from the light at Hinkletown

Tues, Wed, Sat 9-5  
Thurs, Fri 9-9  
Closed Monday

717-733-4973  
Financing Available

**ROHRER'S ARE DISTRIBUTORS FOR BANVEL**  
For post-emergence weed control on corn...

# Banvel® herbicide...



...alone or tank-mixed with 2,4-D (depending on your weed problem):

...to control tough, late-germinating broadleaf weeds.

...to cover misses of pre-emergence herbicide application.

...to get control where weather or other factors make earlier application impossible.

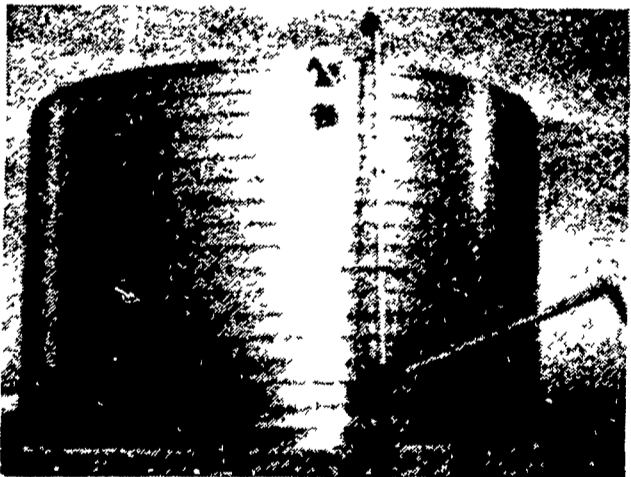
...to make sure that late weeds cannot mature to become the nursery for next year's weed crop.

Ask us for application details about Banvel herbicide... from Velsicol.



Note: Before using any pesticide, read the label.

# Lipp.



## For Liquid Manure Storage.

Unique construction methods mean Lipp builds unique manure tanks—in fact, the strongest tank on the market today

We roll our tanks upward on location from coils of steel and seal the coil edges with a unique double fold lock seam. The result is a boltless, smooth inner wall tank in 12 to 90 foot diameters and up to 900,000 gallon capacities. Interiors can be epoxy or Black Klad with aluminized or galvanized exteriors. And construction is quick.

We're Lipp. We're different and we're better. Storage is our specialty. Call or write today and get more details on the strongest manure tank available.

# Lipp

**CHESTER STOLTZFUS**  
Sales Representative  
Route 2 Watsonstown, PA 17777  
717-649-5321

## P. L. ROHRER & BRO., INC.

SMOKETOWN, PA

PH: 717-299-2571