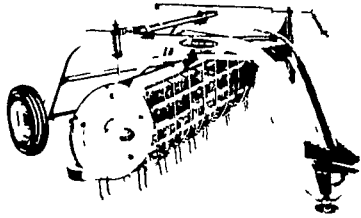


FARM EQUIPMENT

FARM EQUIPMENT



NEW HAY EQUIP.

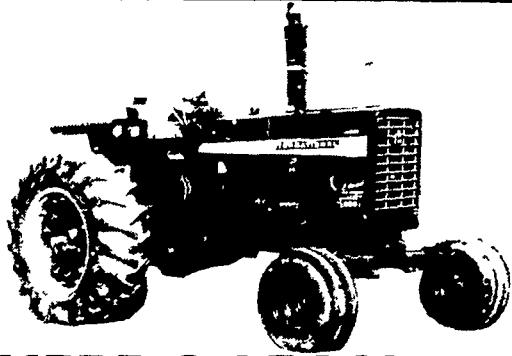


Priced To Sell...

- (3) NI 404 WHEEL RAKES
40 Inch Wheels **\$1125 ea**
- NI 402 BAR RAKE
With Rubber M^{SOLD}
Teeth and Cast wheel **\$1550**
- (2) NI 299
MOWDITONERS **\$4795 ea**
- (2) - NI 279 9'
CUTDITONERS **\$3925 ea.**
- 456 ROUND BALER **\$6995**

SHARTLESVILLE FARM SERVICE

RD 1, Hamburg, PA
215-488-1025
H. Daniel Wenger, Prop.



HERR & LEAMAN

Farm equipment
Let Us Know What Your Looking For
QUALITY USED TRACTORS

- JD 4020 D, Sn^{SOLD}ange
- JD 4020, PS, new cab & air, M&W turbo kit, wf, difflock & dual hyd., Original & clean
- IH 856, 3 pt., wf, 38" rubber, cab & low hrs.
- IH 1975 674G w/1000 hrs.
- 1968 4020 JD syncra-range, wf, 38" rubber, real clean
- IH 1456, cab, exc.
- IH 706D, 3 pt.
- IH 560 G, fast hitch

100% Money Back Guarantee on all the Above Tractors

MISCELLANEOUS

- 3 pull type sickle bar mowers
 - 3 IH 3-14" fast hitch plows
 - (2) Cabs for IH tractor, 06 series & 56 series
 - IH front weights
 - JD 4020 front weights, complete
- Ph. Lancaster 717-284-4659 & Evenings 717-786-4899



USED EQUIPMENT

Call us for your used parts needs. What we don't have we have access to.

We can arrange your financing on many of our larger items.

Grass Pickup for IHC 550 and 650 Choppers

727 Husking Bed for Uni System
JD 4020 Side Console, Power Shift
Farmall 1206 Tractor

IHC 424 Utility w/2000 loader
Clean 1974 IH 1066, no cab, \$11,900

IH 756 Diesel w/cab
IH 706 Gas Tractor

AC 180 Diesel Tractor^{SOLD}
JD 1020 Gas Tractor w/47 loader

Case 930 Comfort King, Standard Tread
David Brown 1410 tractor w/900 hrs.

JD 6600 Diesel Hydro Combine w/corn and grain heads \$25,000.

Several 4 row rear mounted cultivators
IH #710, 5Bx16" Semi-Mtd. Plow, Regular Trip

Behlen 375 bu. dryer \$2750.

Several JD 5B Hyd. reset Plows

RAYMOND B. LEAMAN

Willow Street RD 1, Ph. Lancaster 464-2778
Midway between Lancaster & Quarryville
off Rt. 222 take Brennehan Road
at Graybill Bros. Garage, Refton

- USED TRACTORS**
- ALLIS CHAL ^{SOLD} 180D
 - ALLIS CHALMERS 220D
 - INTERNATIONAL 1466D
 - JOHN DEERE 720 Direct Star^{SOLD} Diesel
 - FORD 4000 D
 - FORD 5000 D
 - FORD 7600 D
 - FORD^{SOLD} D
 - FARMALL 1066 (sharp)
 - FARMALL 574 diesel
 - JOHN DEERE 620
 - JOHN DEERE 4020 diesel
 - CASE 1210
 - MF 202 w/loader

- USED EQUIPMENT**
- JOHN DEERE 4R no-til planter, equipped for liquid fert^{SOLD} insecticide application
 - ALLIS CHALMERS 6R no-til planter, Cheap
 - JOHN DEERE 12' disc
 - ALLIS CHALMERS 12' disc
 - INTERNATIONAL #56 four row planter-excellent
 - BRILLION cultipacker

CLOSED SUNDAYS
NORMAN R. SHORES & SON
R.D. 5, Towanda, PA
717-265-9014



SPEERY NEW HOLLAND
OUR POLICY ON MACHINERY, PARTS & SERVICE
• QUALITY FIRST • AT A FAIR PRICE



HAYMAKERS HAY DAY

Wednesday May 28th, 7:30 AM to 5 PM

MACHINERY SPECIALS

★ THESE TWO & MANY MORE!

LELY GROUND DRIVE FERTILIZER SPREADER

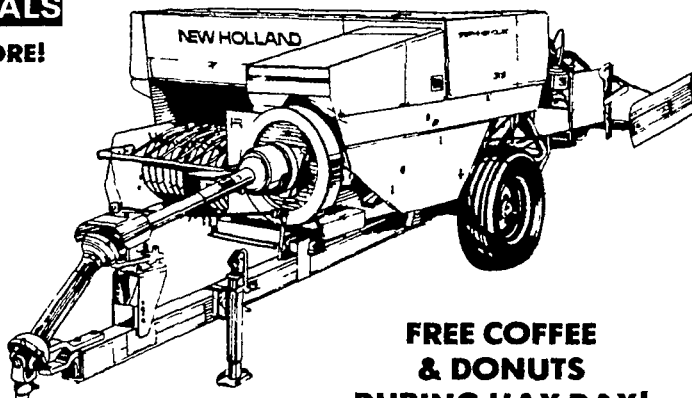
\$1329 less wheels

328 NH SPREADER with Hydraulic Endgate

\$2191

Register For
FREE PEN & PENCIL SET

★ 40 To Be Given Away



FREE COFFEE & DONUTS DURING HAY DAY!

USED EQUIPMENT

- Gleaner E Combine w/3 Row 30" Corn Head & Grain Head
- McCormell forage Wagon, 3 Beater, w/Roof
- Case 955 S.P. Windrower w/10 Ft Head
- NH 461 Haybine
- N.H. 328 Spreader w/ Hydraulic Endgate (Like New)
- N.H. 365 Tank Spreader (Ex. Cond)
- (3) NH 273 Balers w/ Engines
- Ford 532 Baler w/Engine
- Several other New Holland Balers
- Hesston PT-10 Mower Conditioner
- 320 N.H. Baler w/thrower (Ex Cond)
- Several other good used spreaders
- 751 N.I. Hayconditioner
- 850 NH Round Baler Excel. Cond
- 340 Farmall Utility tractor w/Loader
- Farmall M Tractor

WAIVER OF FINANCE

- ★ All New & Used Forage Equipment
- ★ Harvesters - with Row Crop Head till August 1, 1980
- ★ New & Used Spreaders & Grinder-Mixers till Sept. 1, 1980

AUTHORIZED
SPEERY NEW HOLLAND
PARTS and SERVICE



STARLINE SALES & SERVICE PARTS & EQUIPMENT

L. H. BRUBAKER, INC.

350 Strasburg Pike, Lancaster, PA

Phone: 717-397-5179

CALL OUR FRIENDLY SALESMAN
BOB GANTZ
717-397-5179
or 687-6002
Or Call His Home 653-5020 anytime

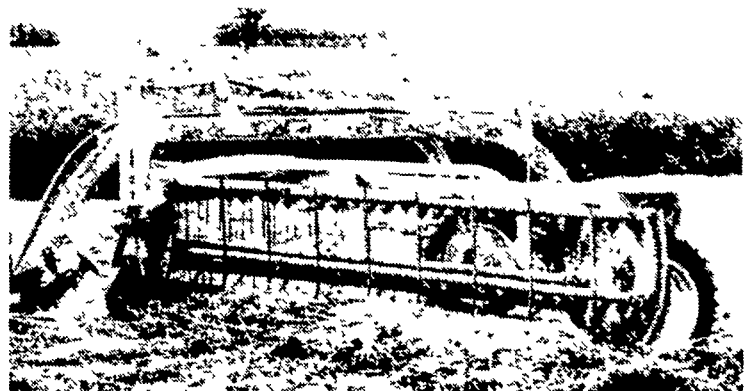
ZOOK'S FARM STORE

R D #2 HONEY BROOK
1 mile West of Honey Brook on Rt. 322 then North on Reservoir Rd
Call 215-273-2943

STORE HOURS Mon., Wed., Fri 7 AM to 9 PM
Tues & Thurs 7 AM to 6 PM
Sat 7 AM to 12:00 Noon

NEW

\$1350⁰⁰



Model No. 126 Parallel Bar Rake

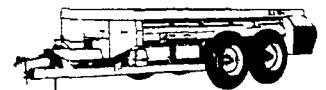


M&R EQUIPMENT ANNOUNCES



AN INVENTORY CLEARANCE SALE ON ALL NEW IDEA EQUIPMENT

Now Buy this New Idea Equipment at prices that will NEVER BE BETTER



NEW IDEA 272 CUT DITIONER

\$3500

NEW IDEA 244 SPREADER

w/Graetz Chain, Hyd. Endgate w/Cylinders, Hoses

\$5700

NEW IDEA 279 CUT DITIONER

\$3700

NEW IDEA 245 SPREADER

w/Hyd. Endgate, Cylinders & Hoses

\$6400

Only One Of Each In Stock

BUY NOW!!

Phone — 717-246-1972 & 717-993-2511
New Park, PA — Stewartstown, PA