

Farmers get 3 nice days to push fieldwork

HARRISBURG — With wet fields during the week ending May 19, Commonwealth farmers took full advantage of the three days suitable for fieldwork, according to the Pennsylvania Crop Reporting Service. Southern counties reported an extra day suitable for work, while central counties had one less suitable day.

Field activities included plowing, spraying and planting of oats, corn, potatoes, soybeans, alfalfa, clover, vegetables and silage crops.

Statewide, reports of farm fuel supplies were mostly adequate. LP gas was rated as 94 percent adequate and four percent surplus, while diesel fuel was rated at 95 percent adequate and four percent surplus. Gasoline supplies were rated at 93 percent adequate and five percent surplus.

Statewide soil moisture was rated surplus to adequate. Soils were rated three-fourths surplus and one-fourth adequate in moisture for the central

area; one-half surplus and one-half adequate for the north; and one-third surplus and two-thirds adequate in the southern section of the commonwealth.

Plowing is now 83 percent complete compared to 91 percent complete last year at this time. Spring plowing was reported 83 percent done in the north, 86 percent done in the central region; and 80 percent complete in the south.

Soybean planting is ahead of last year, with 19 percent

complete compared with 14 percent in 1979. Northern counties reported the most progress in planting, at 37 percent complete. Southern and central counties reported seven and eight percent complete, respectively.

Oats are 90 percent sown, compared with 94 percent a year ago. In the north, 83 percent has been sown, while central counties report 94 percent sown. Ninety-six percent of the oats are sown in the southern counties.

Potato planting was still lagging at 62 percent complete, compared to last year's 75 percent planted. Northern counties reported potato planting as 39 percent complete. Central counties have 74 percent planted and the southern section of the commonwealth, making good progress, reports 82 percent.

Corn planting is also behind at 45 percent complete, compared to last year's 63 percent and the historic average of 51 percent planted. Progress of corn planting for the north was at 41 percent, with 48 percent planted in the central counties and 47 percent planted in the southern area of Pennsylvania.

Barley progressed to 45 percent in boot and 18 percent headed compared to 31 percent in boot and 42 percent headed last year. Wheat is at 33 percent boot stage

and six percent headed. This compares to 49 percent in boot and 14 percent headed in 1979.

Alfalfa hay stands were reported in two-thirds good and one-third fair condition. The first alfalfa cutting was reported at less than five percent with similar portions going to hay and silage. Clo-tim stands were also rated at two-thirds good and one-third fair condition. Amounts of feed obtained from pasture were rated average.

Practically all peaches and cherries were reported in or past full bloom, the same as last year. Apples were 14 percent pink and 83 percent in or past full bloom, compared to 86 percent in 1979.

Asparagus cutting has begun and strawberries are beginning to bloom. Planting of sweet corn and other vegetable crops is progressing.

Local game farms slate open house

SCHWENKSVILLE — Open house programs have been scheduled by the Game Commission at its game farms on Sunday, June 8, from 12 noon to 5 p.m.

Game Commission personnel will be on hand at the farms to explain hatching and rearing programs. No reservations to attend are necessary.

Following are the names and locations of the game farms and the species produced by each:

Eastern Game Farm, Schwenksville R2, between Limerick and Schwenksville, pheasants.

Western Game Farm, Cambridge Springs, R1, three miles southeast of Cambridge Springs on Route 408, pheasants.

Loyalsock Game Farm, Montoursville R2, five miles north of Montoursville on Route 87, pheasants.

State Wild Turkey Farm, Proctor Star Route, Williamsport, seventeen miles north of Montoursville between Barbour and Proctor, turkeys.

State Wild Waterfowl Farm, Meadville R4, two miles northwest of Geneva, mallard ducks.

Southwest Game Farm, Distant, three miles south of New Bethlehem near Distant on Routes 28 and 66, pheasants.

York 4-H Beef Club honored



The York County 4-H Beef Club has been presented with a \$2500 check from BMY Corporation, York area military tank manufacturer. From right are, Vincent Jones, general manager for the manufacturing plant, Charles Bronson, BMY vice-president, Brenda Walter, president of the beef club, the "pink bull" played by vice-president Bill Wise and club secretary Chris Sunday. The check was a thank-you to the 4-H'ers for their part in a beef promotion and giveaway to plant employees for filling an April manufacturing quota for tanks. Funds will be used to buy new floorcovering for the 4-H Center small meeting room and to help fund a May beef show and attendance at the national Angus heifer show in Kentucky.

GLICK'S

ROOFING & SPOUTING

Handler & Installer Of
BAKED ENAMEL TIN ROOFS

Colors: Turquoise, Red, Olive Green, Rust,
Brown, White and Plain

Sizes: 5 ft. up to 24 ft. All in one. Also cut to
exact length.

**WE PATCH SLATE ROOFS
ALSO ROOF COATING (5-Colors)**

SAMUEL B. GLICK

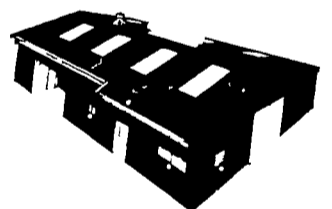
South Belmont Road
R D 1, Paradise PA 17562 Ph (717) 687-9264
Call in Morning Before 6 30
and Evenings after 6 00 P M No Sunday Calls



VERNON MYERS, INC.

STEEL BUILDINGS & GRAIN STORAGE

R.D. 4 - Box 845
Lebanon, Pa. 17042
Phone: (717) 867-4139

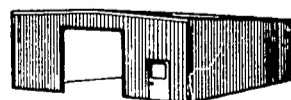
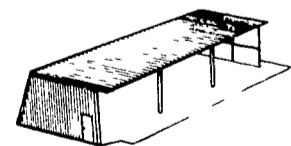


PLEASE READ THIS:

Current levels of grain in storage are high and all indications are that marketing of the grain this year will not follow normal patterns. Therefore, additional storage capacities will be needed this year.

Even with the current economic slowdown, prices are still increasing. We anticipate a rapid rate of increases throughout the industry by year-end.

Take charge and keep control over your crop, your costs, and your market price. Be Prepared! Call us now.



No matter what your agricultural or storage needs, there's a Thrif-stor building that's right for your needs
Equipment storage
Livestock building
Grain storage
Workshop or Garage

So, wherever you need a low cost, low maintenance, light duty building, let Thrif-stor provide the practical, attractive solution. Give us a call



COMMERCIAL and AGRICULTURAL BUILDINGS
We Offer Complete Erection On Any Size Or Style Building

Mail Coupon Today!

- SEND STEEL BUILDINGS LITERATURE
- SEND GRAIN STORAGE LITERATURE

NAME _____
ADDRESS _____
CITY _____ STATE _____ ZIP _____
TELEPHONE _____

LARGE DISCOUNTS NOW OFFERED ON BINS IN STOCK:

- 7' Feed Bin 15' Storage Bin
- 15' Hopper Bin 30' Storage Bin

NEW HEAVY DUTY HANDLE
DELUXE HANDLE PLATE
REMOTE THROTTLE CONTROL
SAFETY REMOTE CLUTCH CONTROL GRIP TO GO RELEASE TO STOP
CHAIN DRIVE OIL BATH TRANSMISSION
PIVOTING DRAG BAR AND ATTACHMENT ASSEMBLY
RUGGED ANGLE IRON FRAME
10 STEEL WHEELS
14 BOLO TYPE TINES
REMOVABLE OUTER TINES FOR NARROW CULTIVATION

6 H.P. Briggs & Stratton Tiller	Reg \$336.95	Sale \$259.95
5 H.P. Briggs & Stratton Tiller	Reg \$326.95	Sale \$249.95

* Good While Stock Lasts *

GREEN ACRE LAWN & GARDEN

171 Green Acre Rd Lititz PA (717) 626-0547
Mon & Fri 8 A M to 8 P M. Tues Wed Thurs 8 to 5
Sat 8 to 4