

Franklin breeders talk cow classification

BY RUTH ANN BENEDICT
Staff Correspondent
KAUFFMAN STATION — Nearly 100 Franklin County Holstein breeders and local FFA members turned out for the Franklin County Holstein Barn Meeting here last Monday, at the home of the Harold F. Crider family, Antrim Spring Farm. Ronald Entlicher, official herd classifier from Missouri, who is currently

classifying herds in Franklin County, was present for the event and acted as the official judge for the judging contest.

He also commented on the classifying he has been doing here in Franklin County.

"You have some fine cows to be proud of in this county and we appreciate the good cooperation you have given us as that makes our hard

job somewhat easier" stated Entlicher.

The National Holstein Headquarters where Entlicher works out of is located in Brattleboro, Vermont.

Winners in the senior division of the dairy judging contest are: first - Ivan Wenger; second - Dwayne Brechbill; third - James

(Turn to Page A27)



Ronald Entlicher, official herd classifier from Missouri briefly spoke about the classifying he has been doing in Franklin County at the Franklin County Holstein Barn Meeting recently.



Harold F. Crider, owner of Antrim Spring Farm, stands beside his recently classified excellent aged cow, Antrim Spring Dandy Barb, as he comments on his 41 cow dairy operation during the Franklin County Holstein Barn Meeting hosted by the Crider family.

THINK

Cheese

FOR THE BALANCED DIET

patz

★ Barn Cleaners, Manure Pumps, Manure Stackers, Silo Unloaders, Bunk Feeders, Feed Conveyors

MARVIN J. HORST

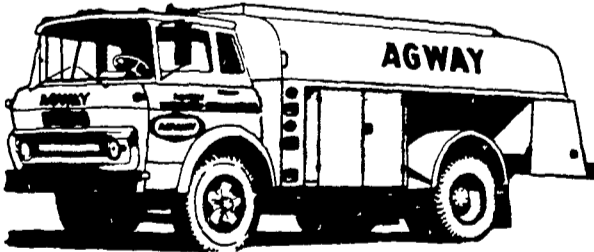
DAIRY EQUIPMENT

1950 S. 5th Avenue, Lebanon, Pa. 17042
Phone: 717-272-0871

AGWAY

GASOLINE

- ★ EASIER STARTING
- ★ MORE EFFICIENT



**TRY A TANKFUL.
YOU'LL LIKE THE CHANGE.**

CALL LANCASTER AGWAY
PETROLEUM DEALER

717-397-4954

ASK ABOUT OUR QUANTITY
DISCOUNT PRICES



**AGWAY
PETROLEUM**



BOX 1197, DILLERVILLE ROAD
LANCASTER, PA.

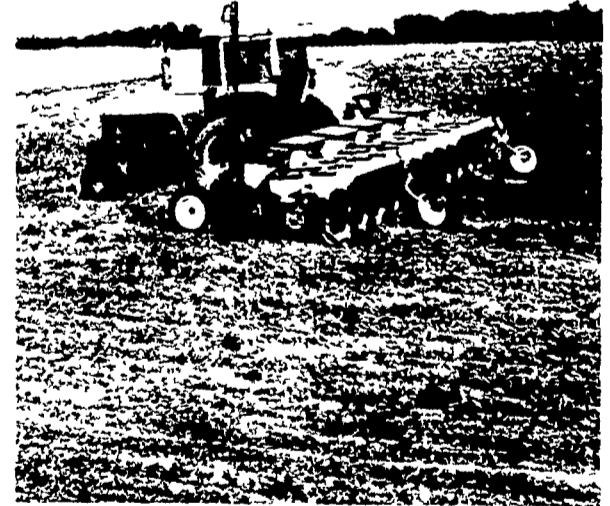
Boost your corn profits with UNIPEL® Starter Special 13-34-10.

This is the "corn popper" special — the most imitated pop-up fertilizer on the market. As part of a UNIPEL corn fertility program, it suits perfectly the young corn plant's immediate need for nutrients to develop a good root system — the starting point for top yields.

Yet, it's also a complete fertilizer with these key nutrients available in each uniform UNIPEL pellet

- quick-acting, non-volatile nitrate Nitrogen that starts feeding early, even in cool, wet, early-season soils,
- long-lasting ammoniac Nitrogen that provides continued feeding through the growing season,
- both quick-acting and long-lasting Phosphorus to resist fixation, team with Nitrogen to become more efficient and feed plants for solid growth, help develop strong root systems,
- vital Potassium to help young plants build strong roots, tough and hardy stalks to resist the stress of weather, pests and disease

We recommend you see us for the details of a sound UNIPEL fertility program — using ORTHO Starter Special for top corn yields



ORTHO
FERTILIZERS
Helping the World Grow Better

Available Analysis 20-10-10, 21-7-14, 10-20-20, 13-34-10, 10-10-30

P. L. ROHRER & BRO., INC.

SMOKETOWN, PA.
PH: 717-299-2571