

# Lancaster

(Continued from Page D12)

crowned crane's trail. Their foot prints are painted on the paved paths.

The management estimates it takes about four hours for a visitor to hike all five trails, covering slightly over three miles. This, of course, varies for each individual depending on how much time is spent looking at and reading about the different birds, mammals, and reptiles that call the zoo their home.

Admission to the zoo is free, but there is a \$2 parking charge. The management advises visitors to try to get there before 10:30 a.m. in order to be assured of a space because parking is limited.

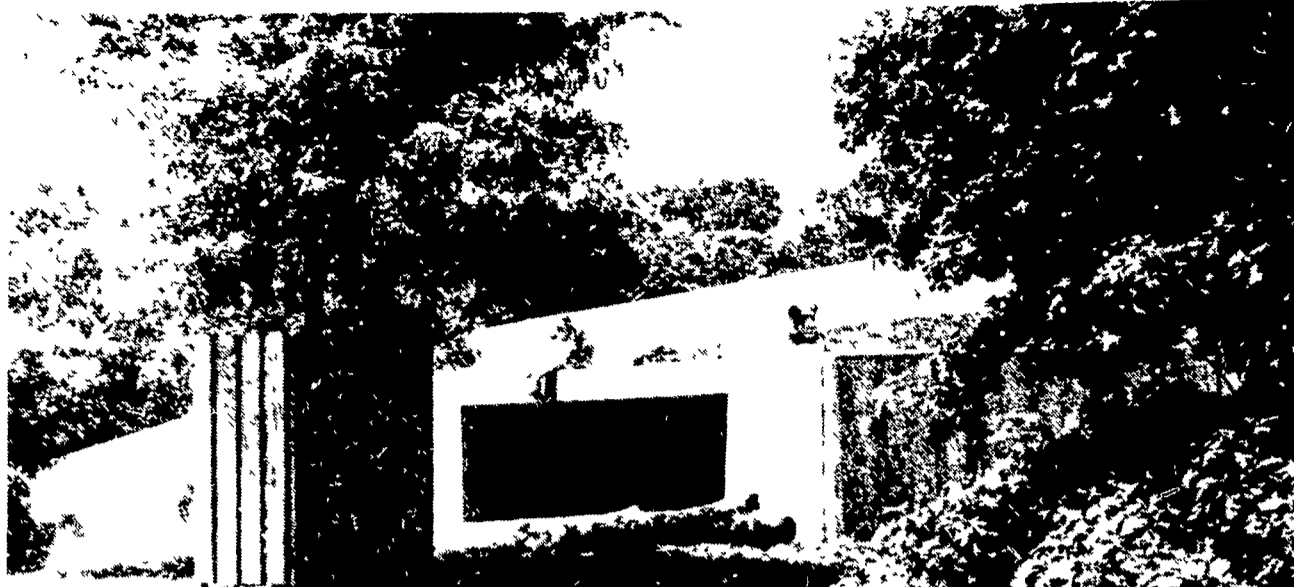
The zoo, located in northwest Washington, D.C.,

has its main entrance in the 3000 block of Connecticut Avenue; or you can enter at the junction of Harvard Street and Adams Mill Road.

The zoo animals love to get visitors year around. The only day they take a break from the tourist rat-race is Christmas day.

From April 1 to the end of September, the park opens its doors to the public at 6 a.m. and closes at 8 p.m. The animal buildings open at 9 a.m. and close at 6:30 p.m. The rest of the year, the grounds open at 6 a.m. and close at 5:30 p.m. and the buildings open at 9 a.m. and close at 4:30 p.m.

One temptation that any visitor to the national zoo must overcome is the urge to feed the animals. Posted all



Extinct in the wild, these Atlas lions continue to reproduce under the watchful eyes of human zoo keepers. Although their natural habitat was destroyed by man, they were saved from being totally lost from this earth because of man's interest. These lions, like all Atlas lions in zoos around the world, are descendants of the lions kept by the king of Morocco in his personal zoo.

over the zoo are signs which read "All zoo animals have controlled diets, do not feed them." The zoo managers explain that the wrong food could make the animals sick, and they encourage the visitors to watch the animals being fed by the keepers.

The food given to the animals is apparently good enough for humans, at least that's what one orangutan must have felt. This shaggy, red-haired ape startled some zoo visitors.

After thoughtfully surveying the crowd of humans, he threw them an orange he had just been dining on. The crowd appreciated his generosity, but he only give them the peel.

The zoo management loves animals, but it forbids any pets from coming to the zoo. If any visitors to the zoo leave their pets in the car, the zoo authorities require them to make sure the

animals have plenty of water and ventilation.

Young and old can come to the zoo for fun and learning. Care has been taken in the layout of the zoo so that those individuals that are handicapped can enjoy the animals and a day out at the zoo, too.

So, if you're looking for something to do this weekend, consider a trip to our nation's capital for a glimpse of animals other than cows, pigs, or chickens. It's easy to get to, and takes about three hours of interstate driving from the Lancaster area.

Have a safe and enjoyable trip, and a good holiday.



This pygmy hippo basks in the Washington D.C. sun, oblivious to the hustling humans on the other side of his pool.



No matter what your age, you can have a fun and learning experience at the zoo.

## ATTENTION POULTRYMEN!

Supplies Delivered To Your Farm  
At Unbeatable Prices

- Energy Saving Motors
- Fan Belts
- Fan Bearings
- Thermostats
- Time Clocks
- Fan Timers
- Motor Protection Fusetroms
- Light Bulbs
- Dust Masks
- Water Filters

Plus Many Other Quality Products

For Service Call or Write

## MINI ACRE FARMS DISTRIBUTORS

Box 484, R.D. #1, Newmanstown, Pa. 17073  
Located 1/2 mile South of Schaefferstown  
along Rt. 501.

717-949-3709

Route Sales  
Elvin Z. Hurst  
Lititz  
7-627-2035

Chambersburg/  
Shippensburg Area  
Glenn L. Crider  
717-532-6557

## Anthratherm COAL STOKERS IN STOCK

Coal is fed from bin or hopper automatically  
Bin feed height is adjustable



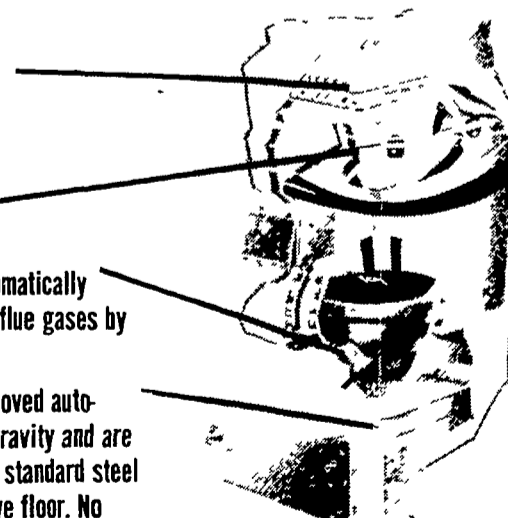
Sealed in oil transmission of rugged design

Built-in tankless coil supplies abundant domestic hot water the year round.

Practically all useful heat is turned into energy due to the unique construction and Turbo-Vector design of the boiler

Fly-ash is automatically removed from flue gases by gravity

Ashes are removed automatically by gravity and are deposited in a standard steel container above floor. No excavating necessary.



## BOWMAN'S STOVE SHOP

R.D. 3, Napierville Road, Ephrata, Pa. 17522

Follow the signs from the light at Hinkletown

Tues., Wed., Sat. 9-5; Thurs. & Fri. 9-9; Monday - Appointment Only

717-733-4973

Financing Available

