

# Lancaster Co. DHIA

(Continued from Page D14)

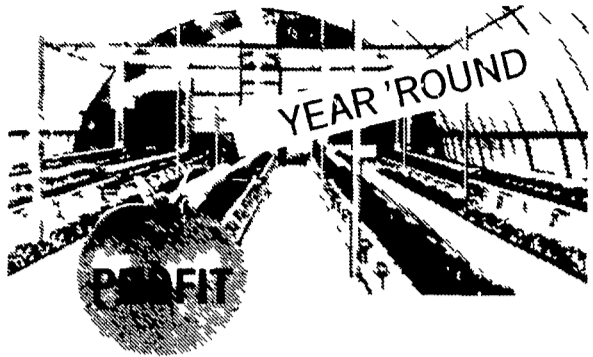
Jay C Garber 10	RH	5 2	305	20,523	3 3	672
Roy H & Ruth H Marlo	Book RH	9 6	305	18,332	3 7	671
David E Delong Norma	GrH	4 4	305	20,132	3 3	670
Tillie	GrH	4 6	305	19,104	3 5	669
Curtis E Akers Abigail	RH	6 8	305	15,089	4 4	670
Robert E Kulp 22	RH	6 10	301	17,242	3 9	669
Long Acres Farm 139	GrH	2-1	305	16,116	4 2	669
LeRoy K King Knight	RH	4-7	305	18,458	3 6	667
Robert C Groff Stoney	RH	7-4	305	17,477	3 8	667
Benuel S Stoltzfus Mamie	GrH	6 8	305	16,567	4 0	665
Parke H Ranck Mindy	RH	5 3	305	16,054	4 1	665
Paul H Martin Lucy	RH	4 4	305	19,765	3 4	664
Nelson H Wenger Alice	RH	6 2	305	17,986	3 7	664
Iris	RH	6 4	305	17,144	3 9	664
Henry H Balmer Star Et	GrH	4-0	305	16,505	4 0	664
Ru Be Mar Farms 23	RH	4 0	303	20,898	3 2	662
Lester J Wiker Gene	RH	5 8	305	16,975	3 9	662
John B Groff Joan	RH	2 6	305	17,130	3 9	661
Emanuel S Smucker Fern	RH	3 3	305	23,167	2 8	660
W Eugene Witwer Joy	RH	3 5	305	22,051	3 0	659
Joseph W Best 102	GrH	3 6	305	13,643	4 8	659
Glenn P Book Teresa	RH	5 1	305	17,423	3 8	656
Jehn M Stoltzfus Daisy	GrH	3 11	305	17,574	3 7	654
Calvin D Beiler Eileen	RH	4 6	305	17,422	3 8	654
Martin Weaver Jr Ceedrop	RA	8-3	305	16,378	4 0	654
Robert H Kauffman Stacey	RH	3 6	305	18,793	3 5	653
Lenewood Farm Connie	RH	3 1	305	18,151	3 6	653
S & A Kreider & Sons 158	GrH	3 5	285	17,998	3 6	653
Charles Smith 51	RH	5 5	305	17,555	3 7	653
John Omar Stoltzfus Jr Ertha	RH	3-9	305	18,573	3 5	652
J Wilmer Eby Donna	RH	3 3	305	17,040	3 8	652

## Lancaster Farming, Saturday, May 24, 1980—D17

OWNER	BREED	NO COWS	% DAYS IN MILK	LBS MILK	% FAT	LBS. FAT
Kreider & Kusby 42	GrH	3-11	305	16,591	3 9	651
Nelson R Habecker 34	GrH	4-6	305	16,452	4 0	651
Ru Be Mar Farms	RH	27 3	86 3	59 9	3 9	2 35
E R Martin	R&GrH	49 8	88 2	53 6	4 1	2 22
Paul H Martin	RH	39 0	85 0	60 5	3 7	2 21
Tritown Farm	RH	29 9	94 0	61 3	3 6	2 21
David A Spangler	RH	38 4	95 3	55 2	4 0	2 19
Paul D Welk	RH	66 6	92 7	56 4	3 9	2 18
A/J Zimmerman	R&GrH	25 1	88 3	62 2	3 5	2 17
Nelson H Wenger	RH	44 4	90 4	50 2	4 3	2 16
J K Peters	R&GrH	43 4	90 6	56 7	3 8	2 14
J Robert Kindig	RH	55 4	94 4	55 1	3 9	2 13
Wenger Brothers	RH	48 4	96 7	57 9	3 7	2 13
D M Stoltzfus	R&GrH	56 7	93 0	54 9	3 9	2 13
Curtis E Akers	RH	61 2	94 8	56 3	3 7	2 11
V Umble & Son	RH	77 3	92 4	49 6	4 2	2 08
S E Stoltzfus Jr	RH	35 0	90 5	57 4	3 6	2 08
J E Fisher	R&GrH	31 5	89 1	57 7	3 6	2 07
Christian Zook	RH	52 6	90 4	54 9	3 8	2 06
Milky Way Farm	GrH	32 0	87 0	56 4	3 7	2 06
Earl Smoker	R&GrH	43 5	98 7	55 1	3 7	2 05
John M Harnish	RH	148 3	93 4	58 0	3 5	2 05
A M Stoltzfus	R&GrH	44 7	93 3	52 6	3 9	2 05
R L Kline	R&GrH	37 3	90 4	55 1	3 7	2 05
K D & Elsie Linde	RG	42 3	90 9	40 8	5 0	2 02
Weaver Homstd	R&GrH	83 3	93 2	53 9	3 7	2 01
Earl R Hursh	R&GrH	39 1	92 0	57 2	3 5	2 00
D & S Hershey	RH	53 0	99 5	54 6	3 7	2 00
W Eugene Witwer	RH	29 0	92 8	52 5	3 8	2 00
R & L Royer	RH	55 2	93 8	48 2	4 1	1 99
E B Lapp	R&GrH	32 5	93 4	58 4	3 4	1 99
Richard N Sauder	RH	32 9	91 4	50 3	3 9	1 98
R H Kauffman	RH	68 0	85 6	52 4	3 8	1 98
C Nevin Hershey	RH	50 1	84 5	49 4	4 0	1 98
Ashevale Farm	R&GrH	29 7	93 3	51 5	3 8	1 98
Ivan M Hursh	R&GrH	37 5	90 7	49 4	4 0	1 97
N Habecker	R&GrH	76 2	91 6	49 9	3 9	1 97
John P Lapp	RH	39 0	93 4	48 6	4 1	1 97
P Robert Wenger	RH	28 1	87 2	50 9	3 9	1 96
Earl N Landis	RH	48 6	91 2	54 3	3 6	1 96
Hershey Bros	R&GrH	58 5	92 2	52 1	3 8	1 96
Long Acres Fm	R&GrH	80 1	97 4	49 7	3 9	1 96
L Oberholtzer	R&GrH	49 3	92 9	57 8	3 4	1 96
Mose G Riehl	RH	29 0	84 0	46 4	4 2	1 95
David S King	GrH	23 3	95 3	53 6	3 6	1 95
E Weaver	R&GrH	52 3	93 6	53 0	3 7	1 94
B Z Lapp	R&GrH	47 0	87 2	57 9	3 4	1 94
Cedar Fringed Fm	RG	126 9	87 4	35 8	5 4	1 93
J Wilmer Conrad	RH	38 0	90 9	49 3	3 9	1 93
Paul E Martin	RH	43 0	87 4	49 5	3 9	1 92
S K Stoltzfus	R&GrH	37 6	96 1	53 7	3 6	1 92
Samuel F Long	Mix	53 7	94 4	52 4	3 7	1 92
R E Harnish	R&GrH	38 0	87 9	51 6	3 7	1 92
A L Stoltzfus	RH	37 6	88 8	53 8	3 6	1 92
Jacob M Conley	RH	46 0	92 4	49 8	3 9	1 92
H V Stoltzfus	R&GrH	44 0	93 7	53 7	3 6	1 92
Gerald Martin	RH	50 3	85 5	50 0	3 8	1 91
M M Groff	R&GrH	30 0	91 3	47 8	4 0	1 91
D E Fisher	R&GrH	39 3	84 6	48 3	4 0	1 91
W M Martin	R&GrH	49 8	88 8	48 7	3 9	1 90
Elmer M High	R&GrH	55 5	77 8	50 0	3 8	1 90
L S Musser	R&GrH	49 9	97 3	53 6	3 5	1 89
Abner K Esh	R&GrH	24 8	92 5	50 9	3 7	1 89
Harold G Shelly	RA	17 6	94 3	47 3	4 0	1 88
Marvin Reed	R&GrH	29 0	94 0	48 8	3 9	1 88
H Landis Weaver	RH	61 8	92 9	51 8	3 6	1 87
King-Ridge Farm	RH	39 6	92 8	57 0	3 3	1 87
D Lamar Witmer	RH	26 1	96 2	50 0	3 7	1 87
H B Good	R&GrH	33 8	96 7	53 3	3 5	1 87
Ben K Stoltzfus	RH	35 3	82 8	52 7	3 5	1 86
D M Eckman	R&GrH	47 1	84 2	47 8	3 9	1 86

(Turn to Page D19)

## HYDROPONIC FARMING



Here is your opportunity to own and operate a high profit and enjoyable greenhouse business growing tomatoes, lettuce and cucumbers year round!!

Growers are needed in your area to become owner/operators in this fascinating money making business.

We provide complete training and technical assistance. Investments from \$11,000-\$18,000. Gross annual income \$14,000-\$20,000.

Investigate this opportunity through personal inspection of our **PROVEN SYSTEM** by visiting a greenhouse in full production.

Write or Call:

**EARL CURTIS NICHOLS**

**Hygro Production, Inc.**

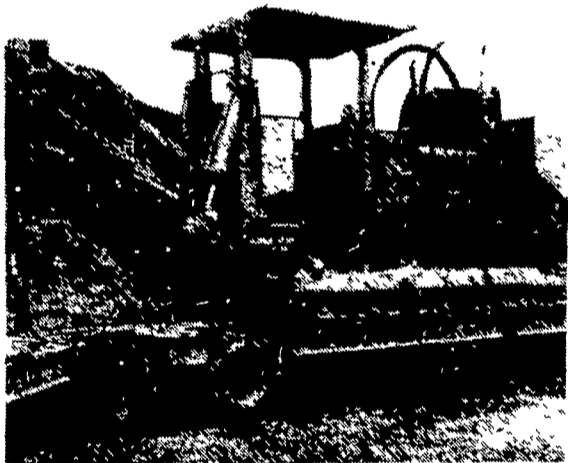
Distributor for Hygroponics, Inc.

21 Meadows Lane

Haverford, PA 19041

215-527-0850

## DRAINAGE PROBLEMS?



**COCALICO EQUIPMENT HAS THE TWO MACHINES TO HANDLE YOUR DRAINAGE PROBLEMS.**

★ Both Machines-Equipped with Laser Beam Grade Control

### Drainage Pays High Returns

Investment	Typical Annual Return
Land Drainage	21-46%
Farm Buildings	3-23%
Farm Land	11%
Stocks	7-4%
Bonds	6-1%

### COMPARE

Even with the conservative figures shown here, it's obvious that land drainage should top farmers' lists of investment priorities.

★ We Stock Heavy Grade Tubing which Exceeds SCS Specifications. In sizes 4", 6", 8", 10" and 12".

★ Also Pipe And Fittings For Tile Outlet Terraces.



**COCALICO EQUIPMENT CO.**

DRAINAGE & EXCAVATING

RD #3, DENVER, PA 17517

PH: 215-267-3808

**IF YOU CAN FIND AN ENGINE THAT USES LESS FUEL THAN A DEUTZ, BUY IT.**

Air cooling lets a Deutz engine warm up faster and operate at a more efficient combustion temperature. There are less exhaust emissions and more power on less fuel. Users report savings of 20 to 40% over water cooled diesels. And 100% direct air cooling eliminates the major source of down time — the water-cooling system. No radiator. No water pump. No hoses. No cavitation. No freeze ups. Deutz air cooled diesels — 5 to 500 bhp.

**DEUTZ** AIR-COOLED DIESELS

**ASK ABOUT STAUFFER'S 5-YEAR ENGINE HEAD & BLOCK WARRANTY**

- We stock rebuilt: starters, generators, injectors, for Deutz
- We have complete road service since 1955
- We supply free application engineering
- We have facilities for any mechanical fabrication required to apply new Deutz diesels.

**Stauffer Diesel Inc.**

312 W. Main St. New Holland, PA

Ph: 717-354-4181

Retail, Wholesale & O.E.M. Sales