

Lancaster Co. DHIA

(Continued from Page D10)

Joseph Eshleman	49	GrH	7 5	305	17,425	4 6	796
Paul W Zimmerman	32	GrH	5 11	305	24,254	3 3	792
K D & Elsie Linde	Frame	RG	2-11	298	16,451	4 8	789
	Xera	RG	7 7	305	14,851	4 7	695
	Ceres	RG	5-3	305	14,269	4 8	682
James W Bowman	Darlene	GrH	5-4	305	23,331	3 4	788
	Barbie	GrH	3-9	305	18,898	3 8	722
Glenn E Burkholder	Ellen	GrH	3 0	305	20,483	3 8	778
John M Zimmerman	21	GrH	4 10	305	16,521	4 7	777
	13	GrH	5-10	305	21,505	3 6	766
	17	GrH	7 10	305	19,554	3 8	748
	14	GrH	5 10	305	20,901	3 5	728
	51	GrH	5-10	305	16,737	4 1	682
Amos B Lantz	Dido	RH	7-5	305	19,672	3 9	776
	Paula	RH	7-5	305	19,522	3 5	677
Vernon R Umble & Sons	Alice 2	RH	6 11	305	18,632	4 2	776
	Kitty	RH	6 6	305	19,152	3 9	745
	Honey	RH	3-1	305	16,629	4 2	705
	Trixie	RH	2-3	305	16,156	4 4	703
	Ella	RH	4-5	295	17,801	3 8	681
	Maid	RH	2-0	305	14,711	4 5	657
Tritown Farm	Kay	RH	10 5	305	21,595	3 6	773
	Belle	RH	6 1	305	18,754	3 5	653
Robert H Rohrer & Sons	198	GrH	5-7	305	18,325	4 2	772
	111	GrH	3 7	305	19,577	3 8	738
	95	GrH	4 7	305	21,131	3 5	736
	42	RH	2 11	305	20,419	3 5	724
	93	GrH	5 8	305	23,248	3 1	721
	23	GrH	3 8	305	21,247	3 3	696
	237	GrH	4 7	305	18,073	3 8	686
	188	GrH	3 7	305	16,728	3 9	659
	189	GrH	2 3	305	15,985	4 1	658
Wilbur N Erb	2	RH	6-3	278	17,466	4 4	772
Allen Lee Stoltzfus	Eclipse	RH	6 4	305	19,159	4 0	771
	Sue	RH	6 3	249	16,467	4 1	670
Samuel M Martin Jr	Laura	GrH	4 10	305	20,247	3 8	770
	Tulip	GrH	2-10	305	20,052	3 5	704

Jacob S Dienner	Jessie	RH	4-10	305	19,599	3 9	768
	Goldie	RH	8-4	305	21,399	3 3	708
Ivan Stoltzfus	Lisbeth	RH	4-8	305	19,914	3 8	766
	Ilene	RH	4-5	305	16,882	4 3	733
Edgefield Farms	Blackie	RH	6-9	305	18,052	4 2	762
	Pat	RH	4-10	297	22,167	3 1	696
	Elaine	RH	5 4	305	18,601	3 5	651
James F Myer	Grace	GrH	6-8	282	16,694	4 6	762
J Ray Ranck	Pal	GrH	4-1	305	19,932	3 8	761
Lewis E Bixler & Son	Jackie	RH	5-5	305	20,992	3 6	756
	Sheri	RH	4-7	305	17,799	4 0	718
Triple H Farms	596	RH	5-10	305	19,214	3 9	756
	369	GrH	7-9	305	17,882	3 8	687
C Nevin Hershey	Marie	RH	3-7	305	18,540	4 1	756
	Clara	RH	6-9	305	17,782	4 1	730
	Claudia	RH	4-2	305	19,729	3 7	729
Pequea Meadows Farm	20TK2nd	GrH	7-5	305	21,661	3 5	755
Jonas E Zook	Ginger	RH	8-0	305	20,753	3 6	755
	Judy	RH	9-6	305	16,224	4 1	665
Steve M Stoltzfus	Rhoda	GrH	8-5	305	20,200	3 7	754
Marvin K Witmer	Fay	RH	3 2	305	16,971	4 4	748
Robert Martin	62	GrH	4-2	305	20,158	3 7	747
	59	GrH	3-1	305	19,533	3 7	716
	55	GrH	3-2	305	17,309	4 1	714
	41	GrH	2-3	305	18,504	3 6	661
Bennie L Fisher	Sandie	GrH	7 4	305	16,459	4 5	746
Nathan E Stoltzfus	Rosene	RH	4-7	305	20,025	3 7	744
	Jeanne	RH	3 6	305	16,203	4 2	678
Cedar Fringed Farm	Mickey	RG	5-10	305	12,317	6 0	744
J Richard Boll	200	GrH	4 2	305	23,039	3 2	743
	2	GrH	3 8	305	21,360	3 3	704
David A Spangler	Fern	RH	4 11	305	21,464	3 5	743
Daniel M Stoltzfus	Pansy	RH	6-3	305	20,628	3 6	743
Paul H Rohrer & Sons	33	GrH	5 5	305	17,585	4 2	743
Romella Farms	Della	RG	6-5	305	13,103	5 7	743
	Mardine	RG	6 6	301	12,579	5 3	663
James C Weircksel	Bertha	GrH	3-5	305	16,551	4 5	740
Rosegale Farm	Sunshine	RH	4-2	305	20,706	3 6	739
Ivan Z Martin	Mattie	RH	9-9	305	18,501	4 0	737
Weaver Homestead Farm	2	GrH	6-3	305	20,741	3 5	736
G Dale Bollinger	Clara	RH	5-2	305	19,427	3 8	736
J Floyd Kreider	40	RH	6 0	294	19,239	3 8	736
Britain Acres Farm	123	RH	6 8	288	19,110	3 9	736
	17	RH	3 11	305	18,220	3 8	687
	10	RH	5-3	305	15,979	4 3	680
Thomas C Lapp	Beulah	RH	8-9	295	19,858	3 7	730
Ken & Nelson Stoner	148	GrH	7-3	305	17,076	4 3	730
	72 Bon	RH	3 7	305	20,975	3 2	664
J E & Shirley Hershey	Connie	RH	6 6	305	19,685	3 7	728
	Nora	RH	4 5	305	18,803	3 6	683

(Turn to Page D14)

WHOLESALE & RETAIL

DISTRIBUTOR FOR: SCHLESSMAN'S SEED CORN

PREMIUM SINGLE CROSSES

- NEW SX-802 \$45 M.F. Size
- SX-405 \$45 M.F. Size
(22 Bu. Above State Average)

Need Corn Dealers In Different Areas

SORGHUM SUDAN GRASS

- ★ ALFALFA ★ CLOVER ★ OATS

SOYBEANS

- Williams • Wayne • Amsoy 71's • Cumberland
- Cutler 71 • AS 3860
- SS 120's, SS 130's, SS 140's

- ★ SEED POTATOES | ★ CHEMICALS

- ★ VEGETABLES & FLOWER PLANTS

- ★ FERTILIZERS

BALER TWINE

BOYD'S SEED CENTER, INC.

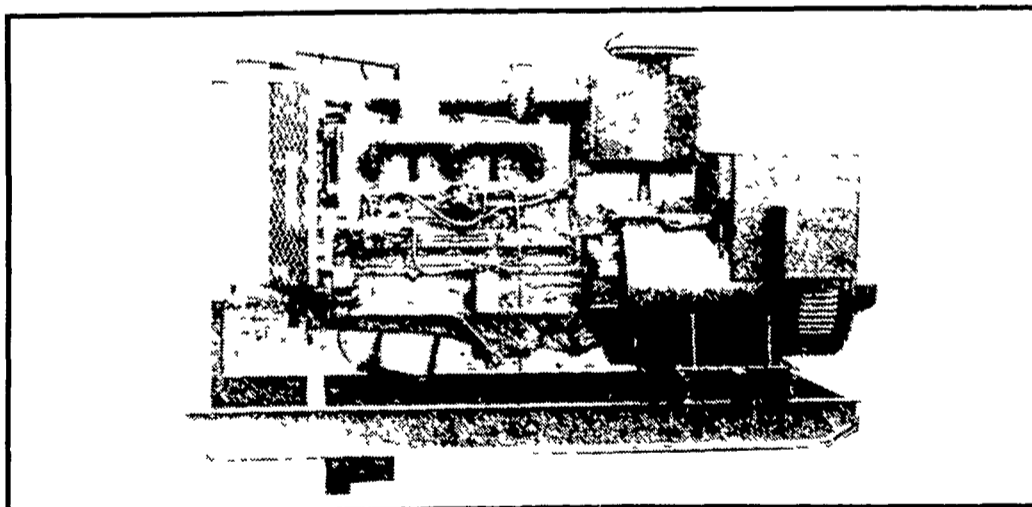
306 Iona Rd., Lebanon, Pa. 17042
Phone: 717-272-8943

BALANCED DESIGN ELECTRIC POWER SYSTEM

Designed and Manufactured by,
MARTIN MACHINERY

For Emergency or Prime Power 1 to 1000 KW
BALANCED DESIGN to Give You Peak Performance
for Your Application:

- FARM • INDUSTRIAL • COMMERCIAL • RESIDENTIAL



210 KW Cummins Diesel

USED GENERATORS AVAILABLE

Engine Sets

- 200 KW Allis Chalmers diesel
- 25 KW Allis Chalmers gas
- 133 KW Detroit diesel
- 3.5 KW Onan gas 1800 RPM

PTO Units

- 25 KW Fidelity with trailer
- 25 KW Winpower 3 pt. hookup
- 25 KW Kurz & Root with trailer
(Brushless)
- 15 KW Generac with trailer
- 15 KW Surge without trailer

We Also Have Special Designed Switch Gears
Manufactured by Westinghouse to Our Specifications

MARTIN MACHINERY

P.O. BOX 35, MARTINDALE, PA 17549
Bus. Ph: 215-445-4800

Res. Ph: 215-267-7771

EAR CORN

Paying Top Prices For
Good Quality Ear Corn

- Wet or Dry
- No Quantity to large or to small
- Fast Unloading - Dump on Pile & Go
- Easy access - 2.2 miles off 283 bypass-Manheim, Mt. Joy exit
- Daily Receiving 7:30 A.M. to 5 P.M. - unloading evenings & Saturdays by appt.
- Trucks available for pick up at your farm.

Call Anytime For Price
717-665-4785

JAMES E. NOLL GRAIN