

Livestock market and auction news

Western Maryland Market

Tuesday, May 20

Report supplied by auction BUTCHER CATTLE: Fat Steers few offered; 1 Low Choice to 59.00; Good Holsteins to 56.00; Standard to 53.00; Cows mostly steady prices; High Yielding Utility 50.00-52.10; Standard & Utility 46.00-49.50; Canners 43.00-46.50; Shell 43.00 Down; Bulls few offered; 1600-1950 lbs. 55.00-58.00.

BUTCHER HOGS: Steady to 25 cents higher. Top Hogs 30.00; Bulk 215-240 lbs. 29.50-30.00; 190-210 lbs. 29.00-29.85; Sows 300-600 lbs. 23.00-26.00; 200-300 lbs. 20.00-23.00.

VEAL CALVES: Light run - strong demand. Good 85.00-96.00; Standard 75.00-85.00; Light Calves 70.00-80.00; Weak & Rough 70.00 Down.

CALVES RETURNED TO FARM: 1 Hol. Hfr. 85 lbs. at 135.00; Hol. Bulls few 95-110 lbs. 100.00-124.00; 90-100 lbs. 85.00-100.00. Beef type 80-105 lbs. 85.00-130.00.

LAMBS: Good run, prices steady. Good & Choice 95-115 lbs. 64.00-66.00; Good & Medium 70-85 lbs. 55.00-57.00; Feeders 40-55 lbs. 45.00-71.00.

STOCK CATTLE: Mostly heifers offered, strong demand for all classes. Stock Steers 400-600 lbs. Good & Choice 69.00-85.00; 600-850 lbs. Good 50.00-66.00; Stock Heifers 400-600 lbs. Good & Choice 60.00-80.00; 400-600 lbs. Medium 50.00-60.00; Stock Bulls 650-850 lbs. Good & Choice 55.00-60.00.

PIGS AND SHOATS: Good run, prices steady. By the Head 15-30 lbs. 8.00-15.00; 30-

60 lbs. 15.00-26.00; By the Lb. 40-80 lbs. 35.00-44.00; 90-135 lbs. 26.00-31.00. Stock Boars 180-290 lbs. 19.00-23.00.

Chambersburg Auction

Thursday, May 22

Report supplied by PDA CATTLE: 332. Compared with last Thursday's market: Slaughter steers \$1.50-\$2 lower. Sl. cows \$3-\$5 lower. Sl. steers Choice No. 2-4 1000-1200 lbs. 58.50-62.10, couple 62.85; Good 55.00-58.00; Standard 52.00-54.50; Sl. heifers few Choice 55.50-58.00; Good 53.85-56.50; Sl. cows Utility & Commercial 43.00-48.00, few 49.35. Cutters 45.00-48.00; Canner & L. Cutter 41.00-44.75; Shells down to 37.50 Sl. bullocks 54.75-59.00; Sl. bullocks Yield Grade No. 1, 1000-2140 lbs. 51.00-59.25.

FEEDER CATTLE: Bulls few Large Frame No. 2 400-800 lbs. 52.85-60.00.

CALVES: 276. Vealers grading Choice \$8-\$15 lower, Standard & Good few Prime 94.50-103.00; Choice 70-90 lbs. \$2-\$3 lower; 82.00-96.50; few Good 73.00-80.00; Standard & Good 70-90 lbs. 67.00-73.00.

FARM CALVES: Hol. Bulls 80-125 lbs. 73.00-135.00, mostly few 90.00-120.00; Hol. Heifers 70-140 lbs. 85.00-150.00.

HOGS: 101. Barrows and gilts \$1 lower. No. 1-2 210-250 lbs. 31.25-31.85, No. 1-3 220-240 lbs. 29.75-31.75, 1 lot of No. 2-3 240 lbs. 27.85. Sows No. 1-3 350-550 lbs. 23.00-25.75, few No. 2-3 300-450 lbs. 18.00-23.00. Few Boars 21.75-24.00.

FEEDER PIGS 151. No. 1-

3 35-50 lbs. 8.00-13.00 per head; No. 1-3 70-80 lbs. 21.00-23.00.

SHEEP: 17. Spring lambs 1 lot Choice 39 lbs. 78.00; 1 lot Good 60 lbs. 65.00; few Sl. ewes 33.00-46.00.

Indiana Auction

Homer City, Pa. Thursday, May 22

Report supplied by PDA CATTLE: 76. Compared with last Thursday's market, Sl. steers few Good 55.50-59.00; Sl. heifers few Good 53.50-57.00; (one) Standard 50.50; Utility 46.75. Few Utility & Commercial 46.00-49.00; few Cutters 45.00-46.50; Canner & L. Cutter 41.00-45.00; Sl. bulls few Yield Grade No. 2 1200-1465 lbs. 54.00-55.25.

FEEDER CATTLE: Steers few Medium & Large Frame 1 300-650 lbs. 55.00-70.00; Heifers, few Medium & Large Frame No. 1, 300-650 lbs. 68.00-70.00; Bulls Medium Frame No. 2 400-700 lbs. 51.00-65.00.

CALVES: 98. Vealers couple Choice 69.00 & 100.00; few Good 80.00-90.00; few Standard & Good 90-120 lbs. 70.00-80.00; Utility 55-125 lbs. 53.00-62.00.

FARM CALVES: Hol. Bulls 85-120 lbs. 80.00-120.00; Hol. Heifers 85-120 lbs. 89.00-142.50; Beef Cross bulls & heifers 85-110 lbs. 80.00-103.00.

HOGS: 107. Mostly \$1 lower instances \$2.50 lower. Barrows and gilts 1-3 100-245 lbs. 28.00-29.50, No. 2-3 275-320 lbs. 25.50-28.00; No. 1-3 130-170 lbs. 24.00-25.75; Sows

US No. 1-3 350-550 lbs. 22.75-27.25. Boars 20.00-23.75.

FEEDER PIGS 45. US No. 1-3 35-40 lbs. 9.50-14.00 per head; No. 1-3 65-80 lbs. 14.50-25.50.

SHEEP: 53. Choice 38-45 lbs. 68.00-72.00; Good 45-70 lbs. 60.00-62.50; Sl. ewes: 15.00-19.00.

Special Slaughter Lamb Sale

Daleville, Va. Friday, May 16

Report supplied by VDA There were 720 head sold. All lambs were graded by Representatives of the VDACS's Division of Markets, Livestock Section on USDA standards and sold by the hundredweight Choice & Prime 95-125 lbs. 69.00-70.25; 85-95 lbs. 66.00-67.25.

Pa. Auction Summary

Friday, May 23 Report supplied by PDA

CATTLE: 6474. Compared with 6873 head last week, and 6589 head a year ago. Compared with last week's market: Slaughter steers .50 cents - \$1.50 lower; Sl. heifers steady to weak; Sl. cows mostly \$1-\$1.50 lower; Sl. bulls unevenly steady. Sl. steers: High Choice & Prime No. 3-4, 61.25-65.35, Choice No. 2-4, 59.00-65.75; Good 55.00-60.50; Standard 52.00-

57.00. Sl. heifers: Choice 58.00-61.00; Good 54.00-58.00; few Standard 50.00-54.00. Sl. cows: Utility & Commercial 46.00-52.00; Cutters 44.00-49.50; Canner & L. Cutter 41.00-45.00; Shells down to 36.00. Sl. bullocks: Choice 58.00-64.00; Good 56.00-60.00; Standard 54.00-59.00; Sl. bulls: Yield Grade No. 1, 1000-2200 lbs. 55.00-61.00; few Yield Grade No. 2, 900-1550 lbs. 52.00-57.00.

FEEDER CATTLE: Steers, Medium Frame No. 1, 320-750 lbs. 58.00-73.00. Heifers, Medium Frame No. 1 300-650 lbs. 56.00-70.00; Bulls Medium Frame No. 1 300-750 lbs. 50.00-67.00.

CALVES 2618. Compared with 2589 head last week and 2845 head a year ago. Supply incl. 75% farm calves. Vealers steady to \$5 lower bulk of supply returned to farm. Few Prime 100.00-114.00; Choice 95.00-110.00; Good 80.00-95.00; Standard & Good 90-120 lbs. 65.00-85.00; 65-90 lbs. 60.00-75.00; Utility 50-100 lbs. 50.00-68.00.

FARM CALVES. Hol. Bulls 80-125 lbs. 80.00-140.00, mostly 90.00-120.00; Hol. heifers 85-140 lbs. 85.00-202.00 mostly 90.00-150.00.

HOGS 7775. Compared with 8935 head last week and 8126 head a year ago. Barrows and gilts steady to \$1.25 lower. US No. 1-2 200-240 lbs. 31.50-33.50 few 34.50,

No. 1-3 200-250 lbs. 29.00-32.00; No. 2-3 190-270 lbs. 28.00-31.00; No. 1-3 140-190 lbs. 25.00-28.00; Sows steady to \$1 lower; US No. 1-3 300-575 lbs. 23.00-29.00; No. 2-3 300-650 lbs. 18.00-24.50. Boars 20.00-26.00.

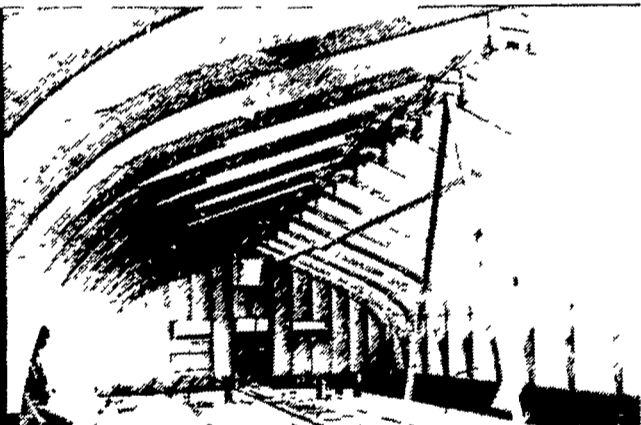
FEEDER PIGS 1680. Compared with 1912 head last week and 1604 a year ago. Highly uneven. US No. 1-3 20-35 lbs. 10.00-20.00 per head; No. 1-3 35.50 lbs. 13.00-24.00; No. 1-3 50-85 lbs. 21.00-29.00.

GRADED FEEDER PIGS: 3732. Compared 2956 head last week, and 3541 head a year ago. All sales by CWT. Feeder Pigs mostly \$1-\$4 lower. US No. 1-2 25-40 lbs. 36.00-55.00, 40-50 lbs. 37.00-49.00 few 56.00, 50-60 lbs. 34.00-54.00, 60-80 lbs. 34.00-41.00; US No. 2-3 25-40 lbs. 25.00-50.00, 40-50 lbs. 37.00-51.00, 50-65 lbs. 34.00-47.00.

SHEEP: 857. Compared with 716 head last week and 665 head a year ago. Spring lambs \$2-\$3 lower. Choice 30-50 lbs. 75.00-89.00; 50-110 lbs. 64.00-78.00; Good 45-90 lbs. 48.00-65.00. Sl. ewes 14.00-37.00.



Versatility... also beauty... now with faster, stronger and more economical construction for all types of farm and commercial buildings...



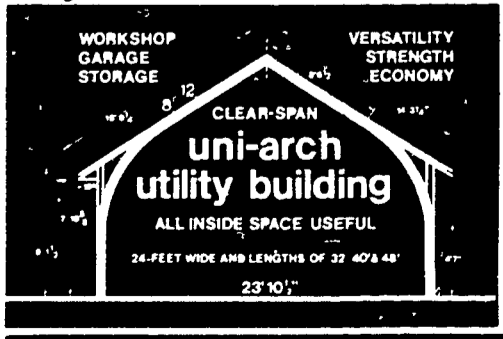
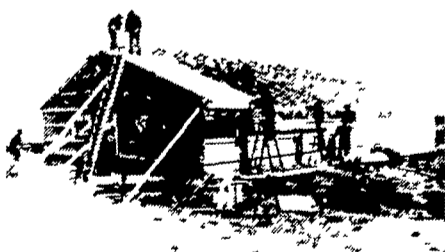
THE RIGIDPLY UNI-ARCH

Here is an exceptionally strong and very easily constructed building, that is at the same time most attractive and allows the complete use of all interior space.

An ideal and economical choice for. Farrowing House (pictured above), FATTENING HOUSE, VEAL HOUSE, MACHINERY, UTILITY or SHELTER

ONE COMPLETE BUILDING PACKAGE - with everything you need for the building style selected, on a single delivery to your location will include laminated arches, purlins, insulation siding and roofing, as well as win-downs, doors (or overhead doors), ridge vents and eave flaps and all needed hardware

CALL TODAY FOR COMPLETE INFORMATION Rigidply Rafters offer a complete line of building materials that have given proven performance for all types of buildings. Contact us for dependable service on all your building needs





WESTENDORF
ONAWA IOWA

ALL NEW ALL-MATIC WESTENDORF



**Fits Most Any
Size Tractor
with quick coupler**

**You Can Mount &
Change Attachments
While Sitting In The
Comfort of Your
Cab. There's no
Work To It.**

**Come In and See It Work
"No Other Loader Can Match The
Efficiency Of This New Time Saver"**

See Demonstration Now At:

CUMMINGS & BRICKER, INC.

Distributors of Farm & Irrigation Equipment
RD 1, Claremont Rd. (Stover Dr.)
Carlisle, Pa. 17013
717-249-6720
Serving Farmers Through Farm Equipment Dealers