

Royal bull sale beats breed record

YOUNGWOOD — Royal Charolais Company beat the breeds record for bull sales last Saturday at their 10th Anniversary Sale, according to Buzz Garey, of Garey Cattle Sales, Morrisville. The 24 bull lots sold at the

Westmoreland County farm brought a total of \$98,900 for an average price of \$3996 to set the new record for the Charolais breed.

The highest price paid for three-quarter interest in one of the Royal bulls brought

\$24,000 from buyers out of two states.

Barton Charolais Ranches, of Abbeyville, South Carolina, and Kenwood Farms, of Seagrove, North Carolina, went together for full possession and three-

quarter interest in RCC Royal Standout 2973.

Celebrating his birthday the day of the sale, this May 17, 1979 polled bull was sired by RCC Standout, out of a Sir Sam daughter. His adjusted weaning weight was 713 pounds.

Royal Charolais reserved the show rights on this \$24 grand bull.

Kenneth Boozel, McVeytown, bought the high-priced heifer at this year's Royal sale. RCC Royal Tempress 2815, a polled daughter of HCR Expectation 269 (polled), out of RCC Royal Countess 34 (polled), sold for \$4100.

The March 13, 1979 heifer's adjusted weaning weight was 633 pounds. She was one of six heifers sold at the sale out of the Expectation bull.

One of the Expectation daughters will be traveling to Lancaster County, to the farm of Mr. and Mrs. Walter Heistand. They purchased RCC Royal Tempress 2884, a half sister to the top-priced female, born April 4, 1979. Her adjusted weaning weight was 617 pounds.

Mrs. Heistand explained

that the heifer's sire was the 1979 National Grand Champion Bull, and her mother, Bell Perfection 59, is polled. She added that they are hoping to show the heifer at the Timonium show in Maryland and later at the Keystone show.

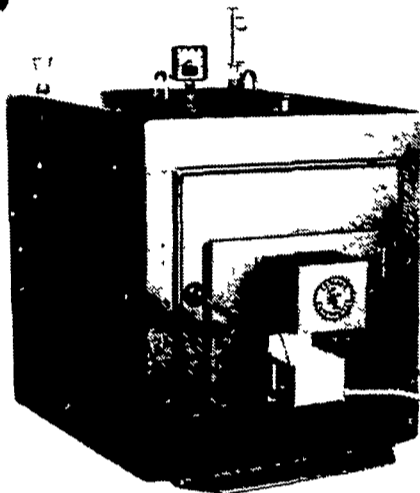
There were 32 lots of females sold at the Royal sale for \$75,400, averaging \$2353.

Bulls and females com-

bined, the May 17 sale totaled \$174,300 for the 56 lots, for a Royal record high average of \$3071.

Despite the rain that attempted to dampen the day, breeders from 20 states and 2 provinces in Canada attended the sale, coming from as far West as Nebraska, Oklahoma and Kansas, as far South as Mississippi, and as far North as Ontario.—SM

An Automatic COAL-WOOD FURNACE with ROTARY GRATE? GREAT!



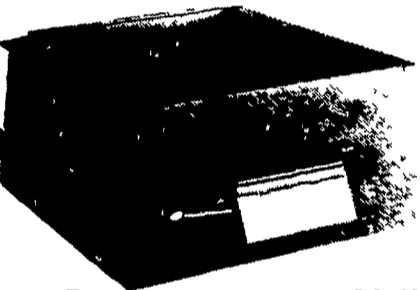
AN ESHLAND INOVATION... WORKING FOR YOU!

These units are designed for burning both Coal and Wood with maximum efficiency and convenience.

The conditions for burning these two fuels are considerably different ...and Eshland designers met the challenge.

The AUTOMATIC DUAL DRAFT system, and unique ROTARY GRATE make it extremely convenient and easy to switch from one fuel to the other... and THERE'S MORE...like,

- Large Capacity 40 & 55 Gal. Models
- Aquastat Controls
- Available in two parts for easy handling and installation.
- Economical source of domestic Hot Water.



CALL OR WRITE FOR FREE CATALOG
ESHLAND ENTERPRISES INC.

Box 23, Greencastle, Pennsylvania 17225
Corrected Phone Number
U.S.A. 1-800-233-1993

Pa. 1-800-632-1896
Manufacturers of Boilers, Hot Air Furnaces Freestanding stoves, & Fireplace inserts.

FOR SALE

Air Dried PA White Pine & Hemlock Lumber.

Sheeting & framing, rough or planned on 4 sides. All 2" framing finished at 1 3/4" thickness.

— Also —
Hardwood planking & beam timbers

LEBO'S SAWMILL

RD 1, Tower City, PA 17980

717-647-9657 & 647-2482 after 4:30 P.M.

N.Y. April milk price set at \$11.96

NEW YORK, NY — Dairy farmers supplying milk plants regulated under the New York - New Jersey marketing orders during April will be paid on the basis of a uniform price of \$11.96 per hundred pounds or 25.7 cents per quart.

Market Administrator Thomas A. Wilson, who announced April's price, also stated that the uniform farm price was \$12.06 per hundredweight in March 1980 and \$10.95 per hundredweight in April 1979. The uniform price is a marketwide weighted average of the value of farm milk used for fluid and manufactured dairy products.

The seasonal incentive fund removed \$.30 per hundredweight from the dairy farmers' uniform price for April, for a total of \$2,791,029.45. Deductions for this fund will continue through June and will be returned in the August through November uniform price calculations.

The total amount of milk received from the 17,591 dairy farmers supplying the New York - New Jersey marketing Area was 930,343,150 pounds during April 1980. This was more than 32.6 million pounds above last year.

The gross value to dairy farmers for milk deliveries was \$113,387,578.00. Wilson explained that this included differentials required to be paid to dairy farmers but not voluntary premiums or deductions authorized by the farmer.

Regulated milk dealers utilized 377,832,389 pounds or 40.6 percent of the total amount of milk for Class I.

The Class I milk is used for fluid milk products such as homogenized, flavored, low-test and skim milks.

For April 1980, handlers paid \$13.60 per hundredweight, or 29.2 cents per quart, for this milk compared with \$12.77 a year ago.

The balance of the milk, 59.4 percent, was used to manufacture Class II products including butter, cheese, ice cream and yogurt. For this milk the handlers paid \$11.59 per hundredweight.

The uniform price is based on milk containing 3.5 percent butterfat. For April 1980, a differential of 15.4 cents was applied to the price for each one-tenth of one percent that the milk tested above or below the 3.5 percent standard.

All prices quoted are for bulk tank milk received within the 201-210 mile zone from New York City.

makita TOOLS OF THE 80's!!

INTRODUCTORY SPECIALS

SANDER-GRINDER

MODEL 9501BKIT
4" SANDER-GRINDER KIT
Compact, lightweight and most versatile for heavy industrial use and home use.

- It grinds heavy metal and masonry.
- It sands stainless steel, wrought iron, and auto bodies.
- It cuts metal and non-ferrous metal.
- It polishes and cleans welds, barbecue grills, metal furniture
- It removes rust and paint from metal.
- It sharpens from farm equipment to lawnmower blades

\$71.50 Complete

GOOD THRU MAY 31

PLANER-JOINTER

MODEL 2004
5 1/4" PLANER-JOINTER

- Ideal for cabinet shops and hobby minded home owners
- Factory assembled, ready to run.
- Compact & light weight, easily transported.
- 1 1/2 HP, single phase, 115V motor included.
- 5 1/4" Planer & 5 1/4" Jointer.

STANDARD EQUIPMENT

Blades socket wrench sharpening holder leveler

SPECIFICATIONS:

AMPS (115V)	10.5
SPEED	8500 RPM
DIMENSION (WxHxL)	16-5/8 x 23-5/16 x 31 1/2"
NET WEIGHT	92.6 lbs

PLANER

MAX CUTTING WIDTH	5 1/4"
MAX THICKNESS	3/4" 5
FEED RATE	31.8 ft/min
NO OF KNIFE	2
TABLE DIMENSION (WxL)	4 1/4" x 15 1/4"

JOINTER

MAX CUTTING WIDTH	5 1/4"
MAX CUTTING DEPTH	1/8"
NO OF KNIFE	2
TABLE DIMENSION (WxL)	4 1/4" x 31 1/2"

\$669.00

GOOD THRU MAY 31

BLUE BALL MACHINE WORKS

Box 716, Rt. 322

Blue Ball, Pa. 17506

717-354-4478