

LS's Grassland FFA conducts first grade tours of Brubaker farm



Jeff Keemer gave the youngsters a tour of the farm shop and shows a group the various tools used for repairs.



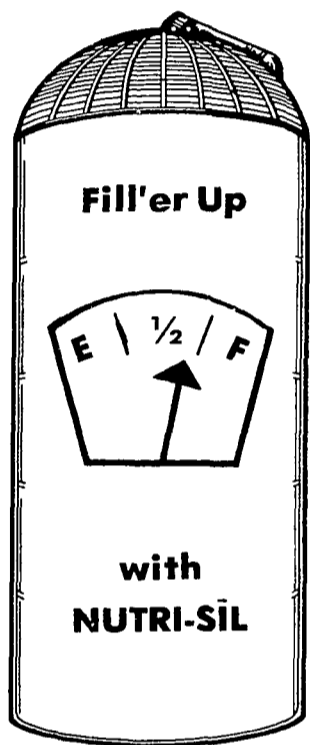
Luann Zeigler poses with one of the piglets the children had the opportunity to touch.



Tawnya Harman's horse Micky was a highlight of the morning for the youngsters. Here Patrice McFarland shows the kids the horse's teeth. The youngsters were impressed with the gunk on the teeth. Patrice commented that theirs would look like that if they did not brush them, to which one young man chirped, "My dad's look just like that."



A talk on fertilizer, seed corn and gardening was included in part of the morning's educational tour.



NUTRI-SIL Brand Silage Inoculant "THE ENERGY SAVER"

During fermentation the carbohydrates in the forage should be converted to lactic acid, the pH should drop to 4.0 or below and the resulting silage should retain its protein, digestibility and most of its energy. On a pound per pound of dry matter basis, the energy content of silage should be higher than that of the crop ensiled. In other

words, the dry matter loss should exceed the energy loss. This can only happen when we produce enough lactic acid to preserve the silage within 4 or 5 days after ensiling. The key to losses in the silo is the type and extent of fermentation which takes place with the material ensiled. By inoculating forage with the right strains of desirable bacteria - as are in the FERTRELL NUTRI-SIL - you can control and direct the fermentation process in order to produce high quality silage and reduce dry matter losses.

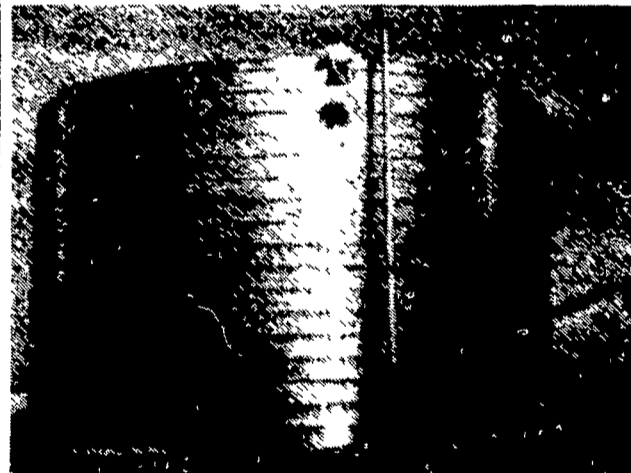
The rapid action of these lactic acid bacteria can **ensilate** or retain much of the energy, nutrients, and moisture usually lost in silage. The "ensilating" effect of the right bacteria and ensiling techniques very often determine the quality of the finished silage product and how it performs in your animals.

PROFITS and FEED VALUE add up EASY AS 1 - 2 - 3

- 1)- ONE GOVERNMENT AGENCY STATES THAT UNTREATED SILAGE LOSES 20 to 40% OF ITS ENERGY POTENTIAL.
- 2)- UNIVERSITY STUDIES SHOW SILAGE ADDITIVES CONTAINING LACTIC ACID-PRODUCING BACTERIA CAN PRESERVE UP TO 32% MORE PROTEIN AND UP TO 17% MORE ENERGY THAN UNTREATED SILAGE.
- 3)- INOCULATE WITH NUTRI-SIL SILAGE INOCULANT TO BE SURE THERE ARE ENOUGH OF THE RIGHT KIND OF LACTIC ACID-PRODUCING BACTERIA READY TO GO TO WORK.

For The Location Of Your Nearest FERTRELL Dealer Call 717-367-1566, or Write:
THE NATURAL DEVELOPMENT CO.
(NADCO), Box 215, Bainbridge, Pa. 17502

Lipp.



For Liquid Manure Storage.

Unique construction methods mean Lipp builds unique manure tanks—in fact, the strongest tank on the market today

We roll our tanks upward on location from coils of steel and seal the coil edges with a unique double fold lock seam. The result is a boltless, smooth inner wall tank in 12 to 90 foot diameters and up to 900,000 gallon capacities. Interiors can be epoxy or Black Klad with aluminized or galvanized exteriors. And construction is quick.

We're Lipp. We're different and we're better. Storage is our specialty. Call or write today and get more details on the strongest manure tank available.

Lipp

CHESTER STOLTZFUS
Sales Representative
Route 2 Watsonstown, PA 17777
717-649-5321