



Shown at the recent Berks County 4-H alumni night front from left are: Janis Maisbury, Rehrersburg; Karen Sattazahn, Womelsdorf and Ruth Ann Janiszkeski, Oley. And back from left: County Council members — Darlene Dietrich, president, Hamburg; Cheryl Adams, Hamburg; Faylene Yoder, Hamburg and Jayne Maisbury, Rehrersburg.

## Berks County holds 4-H alumni night

LEESPORT — The County Council of the Berks County 4-H program sponsored an alumni night at the Berks County Agricultural Center, here, Thursday, May 15.

The honored guests were brought up to date on the events planned for this year and progress being made on the County 4-H Center, which is scheduled to be built behind the Berks County Agricultural Center.

Richard Kauffman, 4-H Assistant, also explained the important role 4-H members are taking in the Woodburners Expo. Last year over \$3000 was earned during the event to be used in building the proposed Community and Livestock Buildings of the 4-H Center. "This year, we expect to make even more money," Kauffman explained. The Expo was held for the first

time last year and is expected to increase this year. 4-H'ers will help make announcements, park cars, and direct traffic. The Woodburners Expo will be held Sept. 6-7 the assistant said.

The alumni were also shown a slide presentation of the activities 4-H members were involved in so far this year, and also some past activities as well. LS

## Bucks Co. lamb show coming

DOYLESTOWN — The Bucks County Extension Service, along with the Bucks-Montgomery Cooperative Wool Pool is holding its 1980 Lamb Carcass show and Evaluation Contest on June 17 and 19.

The on-foot classes will be held Tuesday, June 17, 6:30 p.m., at the Montgomery County 4-H Center, located on Snyder Road, just off

Valley Forge Road (Route 363).

The results of the on-rail Carcass Show will be presented on Thursday, June 19, at 6:30 p.m. at Gehman Meat Plant located in Morwood, Montgomery County, on Morwood Road just off Route 113 between Harleysville and Souderton.

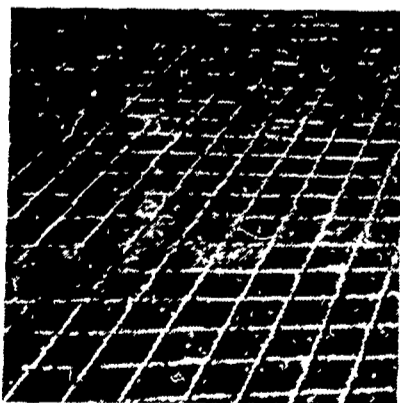
The Carcass Show and Evaluation Contest is held to

give sheep producers the opportunity to learn more about quality lamb production, desirable carcass traits and lamb carcass evaluation, both live and on the rail. All participants will be given the opportunity to judge all classes along with the official and estimate loin eye area, back fat thickness and assign a quality grade to all lambs.

## Slick Problem Areas?

### DAIRYMEN: CONCRETE-GROOVING Cuts Grooves in Concrete Floors

- PREVENT SPLITS
- INSTALL IN HOLDING AREAS
- IMPROVE HEAT DETECTION
- INSTALL IN FEEDING AREAS



Grooves 1/2" wide x 1/4" deep 4' apart

- PREVENT BROKEN LEGS
- ELIMINATE COWS SKIDDING
- PREVENT CRACKED CONCRETE
- INSTALL IN ALLEYS

Why not join the increasing number of dairymen throughout the Eastern states who now receive profitable benefits from this service  
**CONTACT US TODAY!**

## CONCRETE GROOVING, INC.

**MERLE BECKER**

399 S Reading Rd, Ephrata, PA 17522  
PHONE (717) 733-7589

## A new wrinkle in home energy conservation

COLLEGE PARK, Md. — According to the Department of Energy, manufacturers will soon be putting a new yellow and green energy efficiency label on major appliances.

Refrigerators, freezers, dishwashers, clothes washers, water heaters and room air conditioners will

bear the label. Home furnaces will have labels directing the consumer to an information booklet provided by the manufacturer.

Among other things, the label will compare models, and estimate annual energy cost at specific energy rates.

Because the seven major appliances included use

78.2% of home energy, the consumer should be able to save a considerable amount of cash and energy by shopping wisely using these new labels.

If you are considering a new appliance, it may pay to wait until the new labels appear and then use the information provided.

## HAVING TORQUE AMPLIFIER, CLUTCH AND PRESSURE PLATE PROBLEMS WITH YOUR IH TRACTORS?

There is a company in the West that has been rebuilding T A units for several years now and having excellent results. The basic reason for their success is the sprag clutch they use. In the areas where they have been selling, they even have IH dealers that use this unit almost entirely. I am now stocking, distributing & installing their products. Rebuilt this T A system can save you money not only on initial cost but also in longer hours of service. I will do complete torque installation in your tractor or will install components in your housing if you bring housing to the shop. Components kits are also available & can be shipped by air, bus or UPS. Also have available new & rebuilt clutches, pressure plates & water pumps at prices that will save you money!

Dealer Inquiries Invited

For More Information Write or Call:

**J. EDWARD LEAMAN**

RD #1, Box 474 Willow St., PA 17584  
Ph. new number: 717-464-2874

# IMPROVED!

## LIQUID HAYLAGE-ACTIVATOR 16%

The basic ingredient in Haylage-Activator 16 is refined blackstrap molasses. Molasses has been added to grass as it is chopped for many years to improve the resulting silage. Europeans were making grass silage in trenches in the mid 1800's, many times with very poor results. Molasses was added to this grass silage with a tremendous increase in the quality of the silage. For over 40 years our customers have been adding refiners molasses to greatly improve the smell, appearance, consumption and performance of the cattle fed this Haylage. Several years ago we developed Haylage-Activator 16 which has been specifically formulated for the addition to chopped grasses, rye, etc. going into the silo. These are lacking in energy, many times are low in protein and are almost always lacking in certain minerals. Sometimes Haylage is not very palatable. Haylage-Activator 16 will correct all of these deficiencies of an otherwise excellent feed. No "extenders" or non-nutrient carriers are added to Haylage-Activator 16. We have taken molasses, which has already proven its value as a grass silage energy additive, added additional protein sources and minerals which are lacking in grass to make a complete supplement for Haylage.

Manufactured By

**FURMAN E. HENDRIX, INC.**

MANUFACTURERS OF  
MOPRO &  
AGSTAR  
LIQUID  
FEEDS



DISTRIBUTORS OF  
REFINERS  
CANE  
MOLASSES  
C.M.S.

WHITE HALL, MD. 21161  
301-343-0343

OVER 47 YEARS EXPERIENCE IN FEED LIQUIDS  
DISTRIBUTED BY:

AGRONOMY, INC  
Mercersburg, Pa  
717 328-3145

MIDWAY FEEDS  
Bridgewater, Va  
703-828-2196

PLATTENS CUSTOM  
SERVICE  
Stafford, NY  
716-343-5960

WHITMOYER LIQUID  
FEEDS  
Myerstown Pa  
717 866-2476

JAMES ADAMS  
Pocomoke City Md  
301-957-0476

PEOPLES SUPPLY  
Charlestown, W Va  
304-725-8454

ORANGE MADISON  
CO-OP  
Orange, Va  
703 672-2977

FARM & HOME  
SERVICE  
Sykesville, Md  
301-489-4133

TARPE & GREEN  
Churchville, Md  
301-734-7772

CULPEPPER CO-OP  
Culpepper, Va  
703-825-2200

PENNFIELD CORP  
Lancaster, Pa  
717-299-2561

IRVIN ZIMMERMAN  
Fleetwood, Pa  
215-944 9124