

# Milk production highest in 14 years

SOUTHAMPTON — "The U.S. dairy industry produced more milk last year than in any year since 1965. Milk production in 1979 totaled approximately 123.5 billion pounds, up 1.3 percent or 1.6 million pounds from 1978," James E. Honan, General Manager of Inter-State Milk Producers' Cooperative, announced to the membership.

"In the Philadelphia-Baltimore-Washington Federal Milk Marketing Order 4 area, the total Class I sales fell 20,000,000 pounds from March 1979 to March 1980," continued General Manager Honan. "For the same areas, total milk production went up 10,000,000 pounds.

Consequently, Honan added, "your market's Class I utilization fell from 57.2 percent to 51.6 percent from March, 1979 to March, 1980." Other items included the following:

Increased production per cow made up the slack. Production per cow was up 2 percent or about 234 pounds in 1979.

Each cow in the U.S. produced an average of 11,474 pounds of milk. That's

1,334 gallons, or a year's supply of fluid milk and cream for 40 Americans — from just one cow.

States with the largest milk production last year were Wisconsin, 1,722 million pounds; California, 1,041 million pounds; New York, 888 million pounds; Minnesota, 718 million pounds; and Pennsylvania, 664 million pounds.

Production of many manufactured dairy products also increased last year. There were 2.19 billion pounds of American type cheese produced in the U.S. in 1979, 5.5 percent more than in the previous year and a record high for the second straight year. Production of all types of cheese, except cottage cheese, totaled 3.71 billion pounds, also up 5.5 percent. Americans consumed approximately 17.9 pounds of cheese each in 1979, 3.4 percent more than the year before.

Butter production dropped only slightly; it was down .9 percent to 985 million pounds. Per capita consumption of butter remained about the same as in 1978. There were 30 million fewer

pounds of creamed cottage cheese produced last year, for a 2.8 percent drop to 847 million pounds. However, production of lowfat cottage cheese was up 2.6 percent over 1978, totaling 155 million pounds.

Less nonfat dry milk for human food also was produced. The year's 907 million pounds was down 1.4

percent from 1978. Manufacture of frozen products also declined overall last year. While ice cream production was up slightly, totaling 818 million gallons, production of ice milk, at 294 million gallons, was down 4.6 percent. Sherbet production dropped 8 percent to 45.8 million gallons.

## Mary Jo Depp named regional 4-H agent winner

UNIVERSITY PARK — Mary Jo Depp, Jefferson County extension agent on Penn State's Cooperative Extension Service staff, has been named regional winner in the Search for Professional Excellence Contest sponsored by the National Association of County Agricultural Agents.

Depp will represent Extension agents in the Northeastern United States at the annual meeting of the county agents association in Oklahoma City, Oklahoma in August. She will present a paper on her 4-H and youth

programming in Jefferson County.

"Mary Jo is one of 20 Extension agents in the United States who will share their professional expertise with fellow agents," points out Joseph Macialek, extension community resource development agent and state program chairman.

The 4-H and youth category includes extension programs that have resulted in the enhancement of skills, leadership potential, social development, or economic well-being of youth.

## HOG CATCHER and CRATE



Just set the BIG AND LITT'L HOG CATCHER for the size you want caught and the porker catches himself. The catcher opens wide to let him through. This BIG AND LITT'L HOG CATCHER handles pigs and hogs from 50 lbs. up to your big ones.

**ELMER MARTIN**

R.D.2, Myerstown, Pa. Ph: 717-949-2081

Pre-emergence tank-mix combination controls both grassy and broadleaf weeds

**Banvel® + Lasso®\***



a giant first step toward total weed control in field corn

Successful on millions of acres where corn is the major crop, the Banvel + Lasso herbicide combination can give you "near perfect" (90-100 percent) control of a wide spectrum of grassy and broadleaf weeds, when used according to label directions.

Banvel + Lasso herbicide is compatible with most fluid fertilizers. It needs no



DISTRIBUTED BY

**P. L. ROHRER & BRO., INC.**

SMOKETOWN, PA

PH. 717-299-2571

incorporation. There is no carryover.

Take a giant step toward total weed control. Call about the Banvel + Lasso combination. Remember, the "near perfect" herbicide is the one you build...starting with Banvel herbicide...from Velsicol.

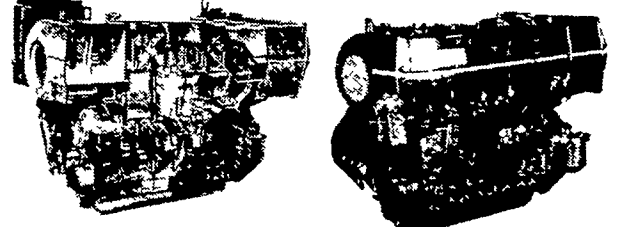
\*The combination is effective on all major soil types except light sandy soils. Lasso is a registered trademark of Monsanto Company.

To achieve best results, be sure to read understand and follow the label.

Authorized Dealer Of



ADAPTABLE TO MOST APPLICATIONS

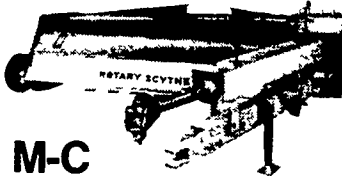


From 13HP to 200HP  
OIL COOLED WATER COOLED AIR COOLED

**EASY**

MC WAY TO MAKE HAY

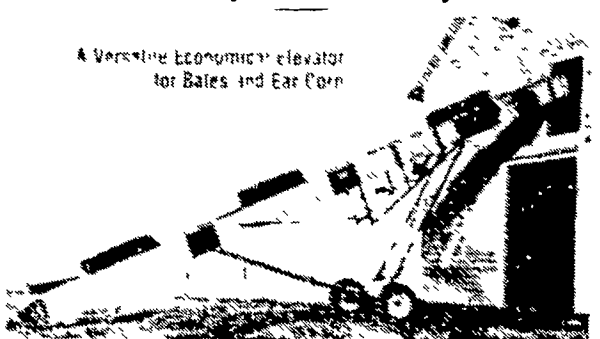
- Mows and conditions in 1 trip
- Non stop No plugging
- Saves rain soaked hay crop
- Handle any hay crop better



M-C Rotary Scythe

7 FT. & 9 FT. IN STOCK

ZIMMERMAN PORTABLE ELEVATORS  
Will Carry Your Corn And Hay



28 ft. \$950 32 ft. \$1095  
36 Ft. and 40 Ft. Also Available

SALES & SERVICE

**MILLER'S REPAIR**

1 Mile North of Bird-in-Hand  
8 Miles East of Lancaster  
RD1, Bird-in-Hand, PA PH. 717-656-9013