

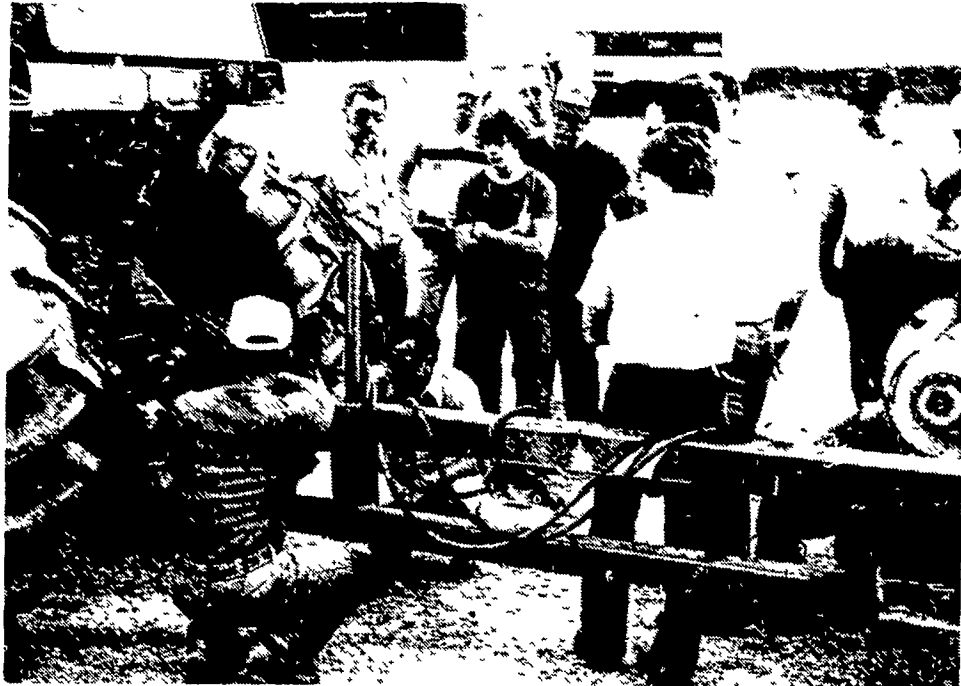
# Volunteer firemen learn farm accident rescue tactics

BY JOYCE BUPP  
Staff Correspondent

**LOGANVILLE** — Volunteer firemen, upon whose knowledge and quick action rural lives often depend, spent two evenings this week learning some basics of farm accident rescue.

Seventy volunteers representing fire companies throughout York County met Tuesday evening for a workshop on farm equipment accidents. The hands-on seminar was the second of a year-long series being held for the first time in the county. Joint sponsors are the agriculture extension service and the Grange, who cooperated with the machinery session hosts, Neuhauses, Inc.

Straw-stuffed dummies, constructed by Grange members, were wrapped, jammed and tangled in typical injury situations involving six separate pieces of high-powered farm machinery. Rescue volunteer students were divided into groups, spending 20 minutes at each simulated injury. Included



Farm accident rescue class members examine PTO hookup, which frequently is the site of mechanized mishaps in agricultural operations.

in the dangerous equipment line-up was a self-propelled combine, pull-type corn-picker, hay baler, pull-type forage harvester, self-unloading chuck-wagon and a post hole digger.

Fire company personnel arrived in a variety of rescue vehicles and prepared for the practice session with a backup of life-saving equipment. As the "rescues" moved into full swing, volunteers used equipment like backboards, giant wrenches for leverage and Stokes baskets for lowering or raising accident victims by rope.

Dennis Murphy, Penn State extension safety specialist, and Joel Grottenthaler, Pennsylvania Emergency Health Services Council, comprised the professional safety team for the seminar. Murphy literally got into the act by entangling himself into a non-operating three-point-hitch posthold digger for each of the six rescue teams. Also assisting were Dave Weinstock, representing the York-Adams Grange, and

Tum Markovits for York County extension services.

Grottenthaler operated the training session with a brief lecture on the increasing loss of lives due to farm equipment accidents. He attributes that dangerous trend to the massive size of modern machinery, as well as the problem of farmers working alone in many situations. Other hazardous conditions include toxic atmospheres from silo and manure pit gasses, potentially lethal farm chemicals, combustible vegetable materials and oxygen displacement.

No rescue attempt should be made, Grottenthaler emphasized, until power sources of any type of equipment are shut off. Engine batteries should be disconnected and grounding removed. Storage facilities equipment, such as feeders

and augers in bins, cannot safely be handled until electrical power sources are cut off. Rescuers need to be aware also of the possibility of automatic-restart timing on some equipment, which could kick into action in the midst of a victim extrication.

While two trucks are a must when dealing with large farm machinery, tow ropes, says Grottenthaler, are a "no, no," because they may stretch and snap, causing further injury.

Cutting through machinery should only be

(Turn to Page A26)



Following removal from combine's grain tank auger, the dummy victim is strapped into Stokes basket and removed from machinery.

- BARN PAINTING
- ROOF PAINTING
- BIN PAINTING
- MASONRY & EPOXY COATING



- Sandblast preparation

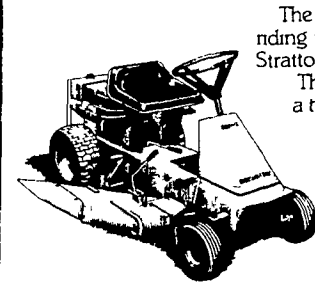
All work is guaranteed satisfactory.

"Call the Country Boys  
with the Country Prices"

**GEBHART'S**  
SPRAY PAINTING  
AND SANDBLASTING

Agriculture - Industrial - Commercial  
Box 145A, R.D. 4  
Hanover, PA 17331  
Ph: 717-637-0222

## NEW GRAVELY MOWERS BUILT TOUGH, LIKE OUR TRACTORS.



The three easy to maneuver Gravely riding mowers have powerful Briggs & Stratton engines from 8 to 11 hp. Three speed all gear transaxle has a two year limited warranty. There's a heavy duty unitized frame and automotive type steering.

See all the great Gravely mowers soon. We have parts and service if you need them.

**GRAVELY**  
Built tough like our tractors

• Check Our Prices!

**EBLING'S LAWN & GARDEN**

Bethel, PA

717-933-8192



If you have fat  
cattle or  
need feeders ...

**THINK  
NEW HOLLAND**

**BEEF SALES**

MONDAY - 1:30 P.M.  
THURSDAY - 11:00 A.M.

Sale Order - Fat Bulls, Steers, Stockers and  
Beef Cows  
Veal Calves - 4:30 Thurs.

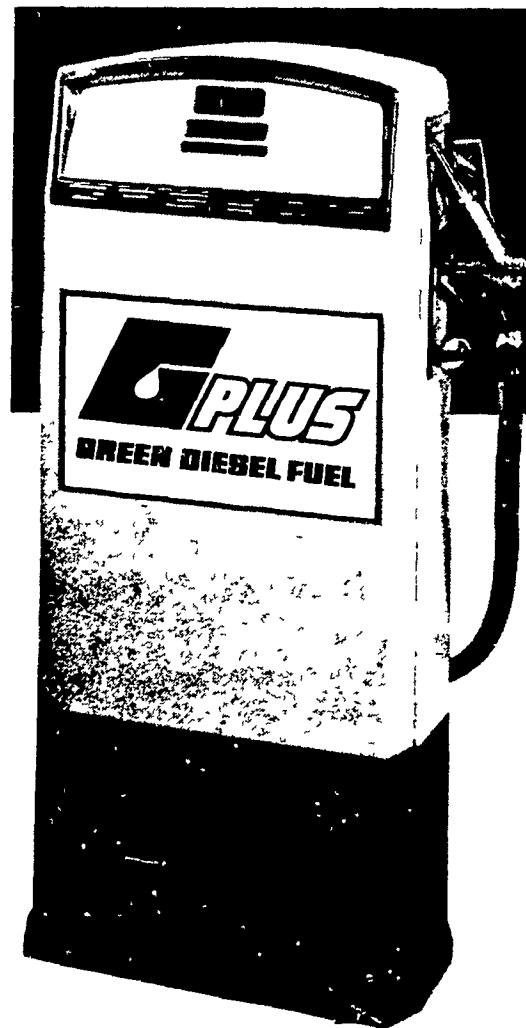
**NEW HOLLAND SALES STABLES, INC.**

Phone: 717-354-4341

Daily Market Report - Phone: 717-354-7288

Abe Diffenbach, Manager

Field Representatives - Alan Diffenbach 717-656-9806  
Luke Eberly 215-267-6608

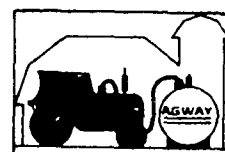


**Green Diesel Fuel**

**A master blend  
by Agway**

IN NEARLY EVERY BRAND  
OF DIESEL TRACTOR

Agway Green Diesel Plus gives faster starts, cleaner burning, and more power than conventional fuels. It combines the best features of Agway #1 and #2 Green Diesel to give you a superior year 'round premium grade fuel. Call today.



**MEMBER  
PRIORITY  
SERVICE**

AGWAY PETROLEUM

**AGWAY PETROLEUM**

BOX 1197, DILLERVILLE ROAD, LANCASTER, PA

Call 717-397-4954

