

Pseudorabies

(Continued from Page A1)

Field investigators are continuing the time-consuming, painstaking task of visiting and revisiting farms to try to trace the source of the disease, Dr. Cable explained.

In farm visits, questioning is projected in both swine marketing directions, including farms from which swine were purchased, as well as places to which pigs have been sold.

The job of tracing marketing activities can become quite widespread, according to Dr. Cable.

For example, one of the early infected farms had purchased 16 different lots of pigs since the latter part of 1979. These pigs had come from approximately 100 different farms and not all of them were in Pennsylvania.

"This illustrates the magnitude of what is involved in trying to trace the disease," Dr. Cable said.

In addition to the geographical spread of the investigation, tracing efforts move back through swine generations.

It was found recently that two of the latest herds in which pseudorabies had been confirmed had sold pigs to a breeder who, in turn, had sold stock to one of the originally infected farms.

"In a situation like this, we try to find a cross-link that may narrow down the source of the disease," Dr. Cable explained.

"If something shows up positive from lab tests, we follow through with more tracing. If results are negative, then we must try and move in a new direction."

There have been no additional acute symptoms of the disease resulting in the death of pigs or other animals since the original outbreak of pseudorabies in southeastern Pennsylvania earlier this year.

Dr. Cable said swine producers should continue to follow management practices designed to help avoid pseudorabies infection.

Only test negative breeding animals from pseudorabies free herds should be purchased.

All breeding animals added to the herd should be isolated for 30 days and then retested.

All show and exhibit animals returned to the herd should be isolated and retested like new herd additions.

Keep visitors to a minimum and provide sanitized boots and clothing for people who must enter production facilities.

Keep dogs and cats away from hogs and control rodents.

Don't have swine mingle with other livestock.

Consult a veterinarian if unexplained losses or sickness occur.

Consider waterways for healing gullies

LANCASTER — Gullies can form almost anywhere in crop fields. And once they're started, they're hard to get stopped. One of the simplest control measures is the grass waterway, says Ed Petrus of the Soil Conservation Service.

Gullies can be bladed in with bulldozers or even plows, and then seeded with a hardy grass such as Reed Canarygrass, he adds. Care should be taken to keep runoff out of the newly

healed waterway until the grass is well established, notes Petrus.

Waterways must be wide enough and deep enough to handle all expected runoff without damage to the sod. The dimensions depend on: 1. the size of the watershed; 2. the slope; 3. the ability of the soil to absorb water and 4. the vegetation.

The size must also depend on the size of farm equipment. They mow and occasionally cross with farm

vehicles. Waterways should never be used as roads, Petrus stressed.

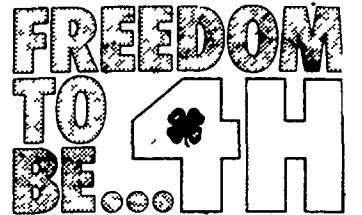
Once established, waterways must be properly maintained. This includes liming and fertilizing, mowing, and reseeding as necessary.

Farmers who are using pesticides or herbicides intensively must take special care to avoid spraying waterways.

Grass waterways, as an

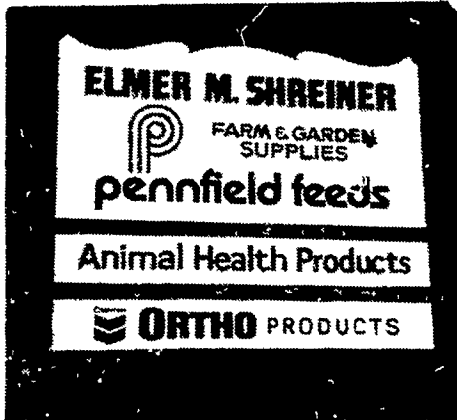
added bonus, are good places for certain ground-nesting birds and other wildlife.

For more information or assistance contact the Soil Conservation Service.



FOLLOW THE SIGN TO QUALITY PRODUCTS & FRIENDLY SERVICE

ELMER M. SHREINER
T/A GOODS FEED MILL
R.D. 1, New Providence, Pa.
Ph: 717-786-2500



LET US SHOW YOU THE ADVANTAGE OF PENNFIELD'S NEW DRY COW FEED

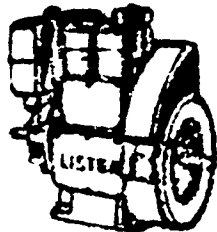
A complete line of animal health products and supplies.
Rohrer's Garden & Flower Seeds
Ortho Lawn & Garden Products

SMUCKER'S SALES & SERVICE

RD #2, BOX 21
NEW HOLLAND, PA 17557

DISTRIBUTOR FOR:

LISTER, PERKINS & SLANZI DIESELS



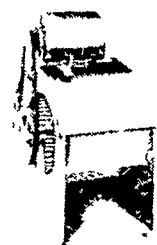
• Good used diesel engines

• New Sputnik wheels and parts

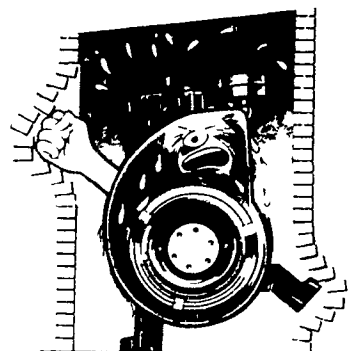


We mount diesels on balers, crimpers, cornpickers, etc.

Install a blower fan for better diesel & refrigeration cooling. Longer life on diesel.



LET ME BREATHE!



For lower cost per hour power, rely on



WE ARE NOW ALSO AN AUTHORIZED DEALER FOR DEUTZ DIESELS 3 h.p. to 450 h.p.

FOR PROMPT SERVICE CALL 717-354-4158 OR IF NO ANSWER CALL 717-354-4374.



HORSE & FEED ADDITIVE 333

Mineral Conditioner For Top Feeding

CONTACT

ISAAC S. FISHER
80A N Soudersburg Rd
Gordonville, PA 17529

Also Available At

PEQUEA SADDLE SHOP

Bachmantown Rd
Ronks, PA



INTRODUCING.. The Newest Innovation In Grass Mowing "The Energy Saver"



DIXON ZTR mowers save your time at every turn.

DIXON ZTR mowers save time every place ordinary mowers waste it: trimming corners, around trees, at every turn! That's Mowbility.

Owners tell us that Zero™ Turning Radius saves up to half their mowing time, and sometimes even more. They tell neighbors how easy the mower operates, how they enjoy using it, what a great job it does — and most of all, it leaves them mower time for fun.

But don't take our word for it; try it yourself. A few quick turns to get the feel of its simple hand levers, and before you know it you'll turn yourself into a DIXON owner! Come in for your free test drive at any one of these participating Dealers

—DIXON DEALERS—

BEDFORD CO.

JEFF'S SALES & SERVICE
(814) 635-3221

CHESTER CO.

LONGWOOD POOL & LAWN SUPPLY
Kennett Square, PA 19348
(215) 444-2663

DAUPHIN CO.

AMES & LUCAS HOME CENTER
Hummelstown, PA 17036
(717) 538-2806

HUNTINGDON CO.

JOHN McCLURE JR.
Warriors Mark, PA. 16877
(814) 632-5955

JUNIATA CO.

VARNERS SALES & SERVICE
Oakland Mills, PA.
(717) 463-3335

LANCASTER CO.

DOMBACH BROTHERS
Willow St., PA 17584
(717) 464 3011

J. B. HOSTETTER & SONS, INC.
Mount Joy, PA 17552
(717) 653-1841

LEBANON CO.

MARTIN HARDWARE & EQUIPMENT CO.
Newmanstown, PA 17073
(717) 949-6817

MONTGOMERY CO.

R. L. MARTIN CO.
Limerick, PA 19468
(215) 489-2597

NORTHAMPTON CO.

HOPPE'S MOWER SALES & SERVICE
Hellertown, PA 18055
(215) 838-6553

SCHUYLKILL CO.

MAURER'S TRUCK SERVICE
Pine Grove, PA 17963
(717) 345-4401

DAVID STERNER

Orwigsburg, PA 17961
(717) 366-2410

SOMERSET CO.

ORN NEDROW
Somerset, PA. 15501
(215) 445-5937

UNION CO.

SATTERSON'S LAWN MOWER SERVICE
Lewisburg, PA 17837
(717) 524-0396

YORK CO.

NEIMAN EQUIPMENT CO.
Dover, PA 17315
(717) 292-2101

NEW FREEDOM TRUE VALUE HARDWARE
New Freedom, PA
(717) 235-2376

FOR ADDITIONAL INFORMATION on the DIXON ZTR® MOWER (The Energy Saver)

Call or Write:

LAWN CARE DISTRIBUTORS

Box 25, Martindale, Pa. 17549
Phone: 215-445-4541

DEALER INQUIRIES INVITED