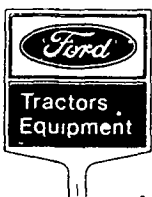


2-ROW 309 PLANTER

309 PLANTER

- Versatile 309 comes in 2-row units — can be toolbar mounted to make 2, 4-row planters.
- Large press wheels provide accurate drive for uniform seed spacing.
- Available in drill or hill-drop models.
- Row spacing 28 to 42 inches.
- Fertilizer attachments (optional) with large fiberglass hopper.
- Pesticide attachments for insecticides and herbicides available.

**SPECIAL SALE ON
2 & 4 Row Planters
A ONE TIME OFFER**



ALLEN H. MATZ, INC.

505 E. Main St., New Holland
Ph: 717-354-2214

SERVING THE COMMUNITY
THIRTY-ONE YEARS
LANC. CO. OLDEST FORD DEALER



Energy management award is presented by Brentwood S. Shunk, left, vice president PP&L, to Richard Hurst, one of the owners of Oregon Dairy Farm Market. Looking on are Hurst's brothers, Victor, rear, and Curvin, far right.

Oregon Dairy gets energy award

LANCASTER — Efficient use of energy - including an energy-saving heat recovery system - has earned Oregon Dairy a Pennsylvania Power & Light Co. Energy Management Award.

The award, part of PP&L's company-wide program to encourage energy conservation, recognizes significant manpower and

financial investments made to improve the energy efficiency of industrial and commercial facilities.

The Oregon Dairy building, located on Oregon Pike north of Lancaster, houses a 28,000-square-foot supermarket and facilities to process and market milk from the adjacent Hurst family farm.

Heat from the refrigeration and freezer compressors is used for space heating in the sales, food preparation and office areas. Excess steam from the milk processing operations serves as backup space heating, avoiding the need for electric resistance

supplemental heating. Excess steam is also used to heat the 2,700-square-foot warehouse, which is kept at 40-45 degrees during the heating season.

Heat recovered from the refrigeration units and in-store baking units provides the building with its hot water needs, another energy-saving feature.

Oregon Dairy is the first store in the Lancaster area to use air returns under the freezer and refrigeration cases, according to Shunk. In addition to improving the comfort in the store, this system reduces air-conditioning requirements for the building. A two-stage cooling system is used to further increase the energy efficiency.

The building is well-insulated, and energy-saver fluorescent lamps are used throughout the facility. The lights operate on two separate circuits to permit operation at one-half the normal lighting level, if desired.

Because of the energy-efficient systems, the building owners will save about 130,000 kilowatt-hours annually and will limit demand - the maximum need for electricity at a given time - by at least 260 kilowatts.

Berks 4-H'ers attend recreational weekend

DOUGLASSVILLE — Twelve 4-Her's from Berks County attended a recreational weekend recently at the Montgomery 4-H Center.

They were as follows; Steve Werley, Darlene Dietrich, Danielle Yoder, Karen Leshner, Diane Werley, and Sally Hensel from Hamburg; Kerry Schwoyer, Oley; Glenn Yanos, Douglassville; Eileen Fisher, Conrad Weiser; Julie Mills, Conrad

Weiser; Jayne Malsbury, Judy Malsbury, Rehersburg. Rick Kauffman, extension agent chaperoned the event.

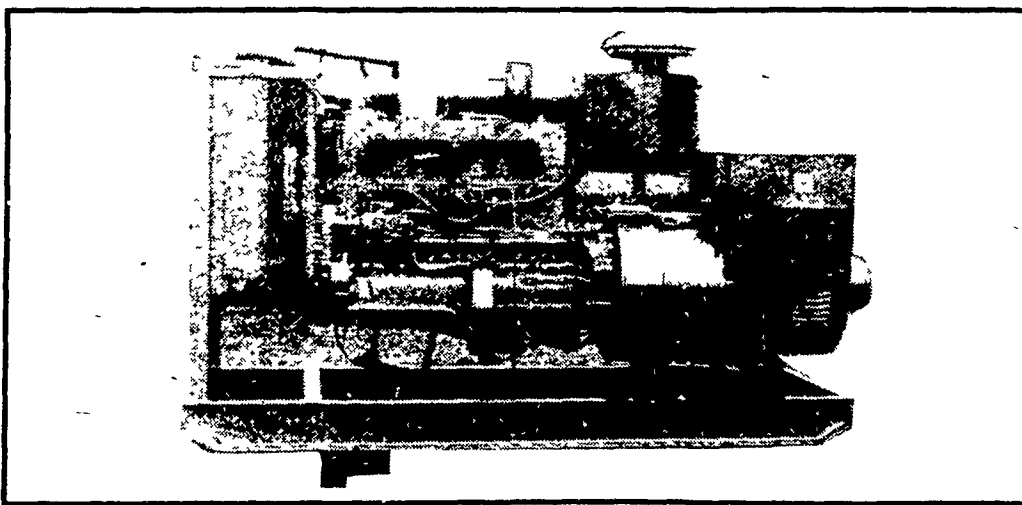
The program included workshops on nutrition and working with the handicapped. There was also a county athletic competition where Berks brought back a 2nd and 3rd placing, and a talent show where Berks brought back another 2nd place.

BALANCED DESIGN ELECTRIC POWER SYSTEM

**Designed and Manufactured by,
MARTIN MACHINERY**

**For Emergency or Prime Power 1 to 1000 KW
BALANCED DESIGN to Give You Peak Performance
for Your Application:**

- FARM • INDUSTRIAL • COMMERCIAL • RESIDENTIAL



210 KW Cummins Diesel

USED GENERATORS AVAILABLE

Engine Sets

- 200 KW Allis Chalmers diesel
- 25 KW Allis Chalmers gas
- 133 KW Detroit diesel
- 3.5 KW Onan gas 1800 RPM

PTO Units

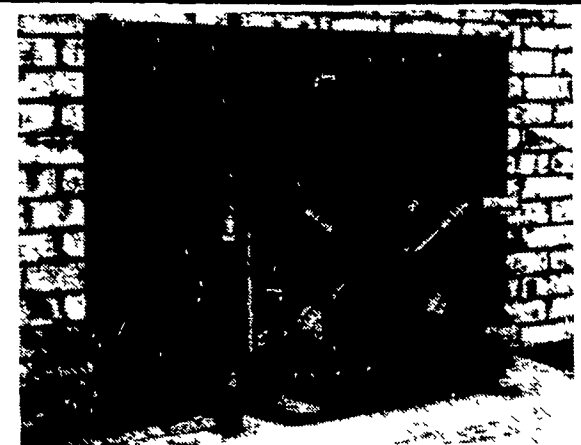
- 25 KW Fidelity with trailer
- 25 KW Winpower 3 pt. hookup
- 25 KW Kurz & Root with trailer (Brushless)
- 15 KW Generac with trailer
- 15 KW Surge without trailer

**We Also Have Special Designed Switch Gears
Manufactured by Westinghouse to Our Specifications**

MARTIN MACHINERY

P.O. BOX 35, MARTINDALE, PA 17549
Bus. Ph: 215-445-4800 Res. Ph: 215-267-7771

**ALASKA
KODIAK WOODBURNERS**



FIREPLACE INSERT

- Fits into your existing fireplace complete with all parts, including blower and instructions for easy installation.
- Specifications (Large)
Burning time 10 to 12 hours Heating capacity with blower, 2,500 Sq ft., without blower 2,000 Sq. ft. Fireplace minimum opening 23 1/2" high x 32 1/4" wide x 15 1/4" deep

**Effective Now Factory Authorized
Super Sale of 1980**

MANY OTHER MODELS AVAILABLE



CHESTER B. NOLT

30 S. Hershey Ave., Bareville
Leola, Pa. 17540
717-656-6898

STORE HOURS:

Closed Mon & Tues, Open Wed, Thurs, Fri. 10 to 8,
Sat 10 to 4 Other hours by appointment