

Carol Slusser Fraind slates art show

BERWICK — Carol Slusser Fraind, a resident of Berwick who specializes in paintings of farms and farmers will hold her third one woman exhibit May 18-June 16 at Bloomsburg State College, Kehr Union Building. The exhibit will be open between the hours of 8 a.m. and 4 p.m. May 18-27 and from 8 a.m.-11 p.m. daily thereafter.

A native of the Berwick area and a graduate of Bloomsburg State College, Fraind has taught science for the past 12 years in the Berwick School District and is currently working on certification in art from Kutztown State College. She recently won first prize in the Hazelton juried fine arts festival held earlier this month.

This show will be a collection of approximately 35 paintings centering upon rural and agricultural people and themes. Watercolor and acrylics are her favorite media, but she also utilizes other media to achieve certain affects.

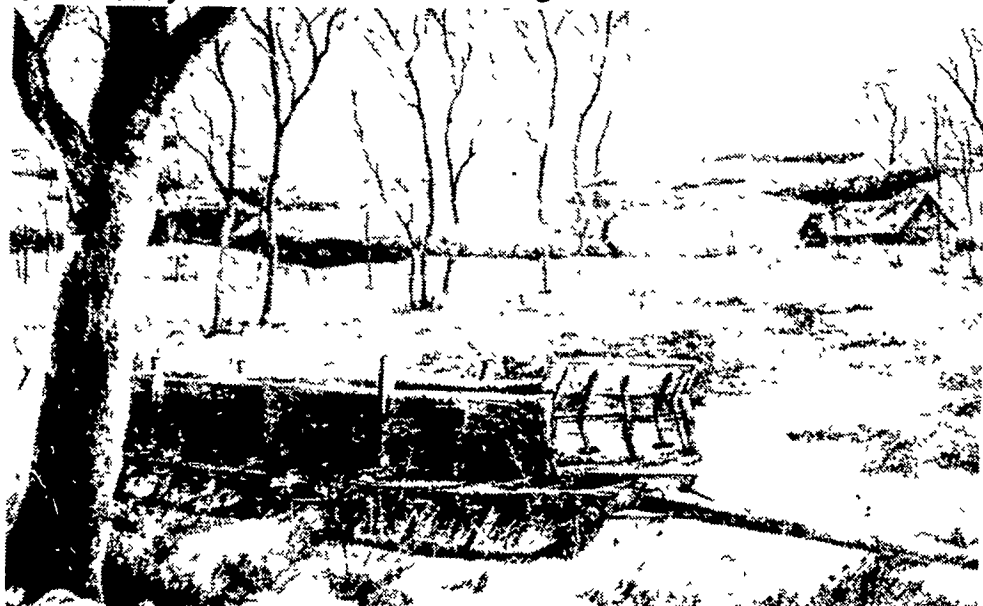
Fraind states her purpose in painting is far more important than any of the awards she has won. Her artistic undertakings reflect her "rural background and perhaps these paintings will make people more aware of the forces that are eliminating family farms and open spaces. Unfortunately, certain groups in our society look at rolling fields and quiet forests only in terms of how they can be exploited to make big profits. In the few years that I've been painting, I have noticed how each farm is unique — different in some way from every other farm."

She continues, "No one will every stop progress and its relentless encroachment, but perhaps communities will learn to guide these changes toward more intelligent and aesthetic results. Allowing people to see the uncommon splendor in the commonplace is the first step toward having them appreciate and try to preserve the things that really count."

One of her works will be included in a calendar printed by the McCleery-Cummings firm this year.



Emma. A watercolor portrait of a gentle hardworking farm woman which reminds everyone who views it of their own grandmother.



Untimely End. In spite of the many years in the elements, the workmanship of this old weathered bobsled and the dignity it still retained impressed the artist.



Beside Still Waters. The serenity of the cows resting in a cool pasture setting is a refreshing change from the work-a-day world.



Ponhaus. This oil painting features butchering which is still a common occurrence in Hetterville.

Old reserve wheat

WASHINGTON, D.C. — Old reserve agreement wheat may no longer be removed from the farmer-owned grain reserve without penalty since the national average mid-month price for April is \$3.40 per bushel, 10 cents below the \$3.50 reserve release level, announced Ray Fitzgerald, executive vice president of the Commodity Credit Corporation.

Old agreement wheat is wheat placed in the reserve prior to restriction of grain shipments to the Soviet Union announced January 4.

Corn and sorghum also may not be removed without penalty, Fitzgerald said. Oats continues in release while barley and rice remain in call status, he said.

Fitzgerald said the reserve status decisions were made following a

review by CCC of the U.S. Department of Agriculture's agricultural price report released here April 30.

Storage earnings resumed May 2 in all states for wheat and continue in effect for corn, oats and sorghum. No storage payments will be made for barley and rice.

Data used by CCC in determining the release and call levels include five-day average prices as reported by USDA's Agricultural Marketing Service (which show prices bid by buyers at selected markets) and the month-end report of prices received by farmers issued by USDA's Economics, Statistics and Cooperatives Service. This end-of-month report shows the previous month's average price and the current mid-month price.

See your nearest
SPERRY NEW HOLLAND

Dealer for
**Dependable Equipment and
Dependable Service:**

Airville, PA

Airville Farm Service
Airville, PA
717-862-3358

Alexandria, PA

Clapper Farm Equipment
Star Route
814-669-4465

Annville, PA

B.H.M. Farm Equipment, Inc.
R.D. 1
717-867-2211

Beavertown, PA

Ben H. Walter
Beavertown, PA
717-658-7024

Berndale, PA

Stanley A. Klopp, Inc.
Berndale, PA
215-488-1510

Biglerville, PA

Nelson Farm Supply, Inc.
Biglerville, PA
717-677-8144

Carlisle, PA

Paul Shovers, Inc.
35 East Willow Street
717-243-2686

Catawissa, PA

Abraczinskas Farm
Equipment, Inc.
R.D. 1
717-356-2323

Chambersburg, PA

Clugston Implement, Inc.
3213 Black Gap Rd.
717-263-4103

Davidson, PA

George N. Gross, Inc.
R.D. 2, Dover, PA
717-292-1673

Elizabethtown, PA

Messick Farm
Equipment, Inc.
Rt. 283 - Rheem's Exit
717-367-1319

Gettysburg, PA

Yingling Implements
R.D. 9
717-359-4848

Halifax, PA

Sweigard Bros.
R.D. 3, Box 13
717-896-3414

Hanover, PA

Sheets Bros., Inc.
Carlisle Street
717-632-3660

Honey Brook, PA

Dependable Motor Co.
East Main Street
215-273-3131
215-273-3737

Honey Grove, PA

Norman D. Clark & Son, Inc.
Honey Grove, PA
717-734-3682

Hughesville, PA

Farnsworth Farm
Supplies, Inc.
103 Cemetery Street
717-584-2106

Lancaster, PA

L.H. Brubaker, Inc.
350 Strasburg Pike
717-397-5179

Lebanon, PA

Evergreen Tractor Co., Inc.
30 Evergreen Road
717-272-4641

Litz, PA

Roy A. Brubaker
700 Woodcrest Avenue
717-626-7766

Loysville, PA

Paul Shovers, Inc.
Loysville, PA
717-789-3117

Lynnport, PA

Kermit K. Kistler, Inc.
Lynnport, PA
215-298-2011

McEwensville, PA

Don's Service Shop
Box 97
717-538-1362

Mill Hill, PA

Paul A. Dotterer
R.D. 1
717-726-3471

New Holland, PA

A.B.C. Groff, Inc.
110 South Railroad
717-354-4191

Oley, PA

A. J. Moss & Son, Inc.
R.D. 2
215-987-6257

Palm, PA

Wentz Farm Supplies, Inc.
Rt. 29
215-679-7164

Pitman, PA

Marlin W. Schreffler
Pitman, PA
717-648-1120

Quarryville, PA

C.E. Wiley & Son, Inc.
101 South Lime Street
717-786-2895

Reedsville, PA

Big Valley Sales & Service,
Inc.
P.O. Box 548
717-667-3944

Ringtown, PA

Ringtown Farm Equipment
Ringtown, PA
717-889-3184

Silverdale, PA

I.G. Sales
Box 149
215-257-5135

Tamaqua, PA

Charles S. Snyder, Inc.
R.D. 3
717-386-5945

West Chester, PA

M.S. Yearsley & Son
114-116 East Market Street
215-696-2990

West Grove, PA

S.G. Lewis & Son, Inc.
R.D. 2, Box 66
215-869-2214

Churchville, MD

Walter G. Coale, Inc.
2849-53 Churchville Rd.
301-734-7722

Rising Sun, MD

Ag-Ind Equipment Co., Inc.
R.D. 2, Route 273 East
301-398-6132
301-658-5568

Woodstown, NJ

Owen Supply Co.
Broad Street & East Avenue
609-769-0308

SPERRY NEW HOLLAND

FINANCIAL SERVICES

MAKE IT EASIER TO HAVE THE BEST