

Farm Business News



Mathews equipment catalog available

CRYSTAL LAKE, Ill. — Mathews Company announces its all new 1980 Equipment Catalog with a full selection of grain drying, storage & handling equipment, as well as M-C flail equipment.

The catalog contains informative articles with energy-saving ideas to help equipment users meet the challenge of the 80's. Of special interest is the Mathews DRYBINE (TM) continuous in-bin dryer. Its energy-saving design

represents a new generation of grain drying technology. Complete details are in the catalog.

Grain dryers, bins, legs, augers — everything needed to set up or complete an energy efficient grain handling system — are covered in the new catalog.

The full-color, 72-page catalog is available through any Mathews Company dealer, M-C Agri-Mart or by writing or calling Mathews Company, Box 70, Crystal Lake, IL 60014.

Methyl gets clearance

ST. LOUIS, Mo. — Clearance has been issued by the Environmental Protection Agency for the addition of grasshopper control in corn, alfalfa, barley and oats to the label of methyl parathion.

A major advantage of using the restricted pesticide, according to Tom

Helms, entomologist for Monsanto Agricultural Products Co., is its quick contact activity.

"When the grasshoppers begin hatching in late May and early June, farmers need control on contact and methyl provides this quick action," he said.

Egg trading increases

DURHAM, N.H. — Egg Clearinghouse continued its record-setting trading pace in April even though participation in the public trading forum slowed compared to other months. Trading for April was 45 percent greater than for the same month of 1979 and was only slightly less than the month's record set in 1977.

Frank Koebrich reported 59,520 cases, representing 71 sales, were traded in April. The approximate value of the eggs totalled over \$850,000. Some 117 firms participated in the trading, he said.

After-Easter uncertainty contributed to the slower movement of eggs through E.C.I., Koebrich noted. It appeared that buyers were

seeking greater values as bids averaged 3.9 cents under trading for Class 1 and Extra Large eggs. Sellers appeared to be testing the public market with average offerings higher than prevailing bids.

Meanwhile, trading volume for the first four months of 1980 surpassed the one-third mark enroute toward topping the million-case trading goal. April's trading put the volume figure at 336,348 cases — more than 48,000 cases ahead of trading for the same period last year.

There were many unfilled opportunities for trading during April, Koebrich reported. Open bids totalled 716,235 cases and open offers totalled 407,412 cases.

Seminar held

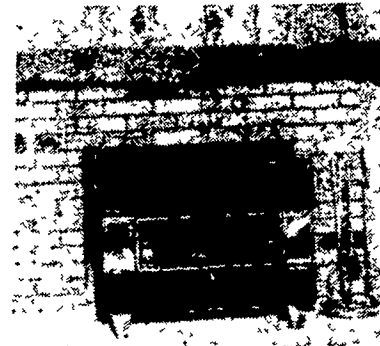
PRINCETON, N.J. — Six sales personnel from Pennfield Corporation, Lancaster, recently participated in a Cyanamid customer sales training seminar.

Attending the three-day seminar were Elwood N. Earhart, Stephen M. Leiser,

Russell C. Latshaw, Noah Gehman, Earl B. Gerlach, and John L. Renshaw. Training sessions dealt with effective listening, selling skills, time and territory management, defending the price and telephone techniques.

WANTED HOMEOWNERS WITH HIGH HEATING BILLS!

Surdial Coal Burning Stoves will comfortably heat your entire home for approximately \$150 to \$200 worth of coal during the entire heating season!*



- The most unique & maintenance free stove available today!

- Beauty, quality with minimal care and maintenance

ELMER L. STOLTZFUS

171 QUARRY ROAD, LEOLA, PA 17540

PH: 717-656-9041

NOW--THE HAY & BEAN RAKE THAT DOES IT ALL

THE NEW ALLEN 789
Efficient * Versatile * Problem Free
And all phases of movement are hydraulic from the tractor seat

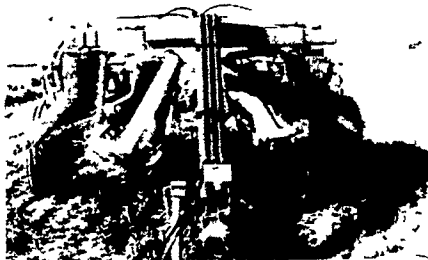


Photo #1

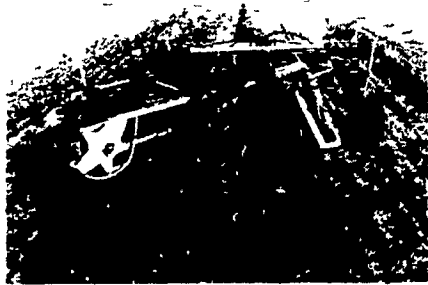


Photo #2

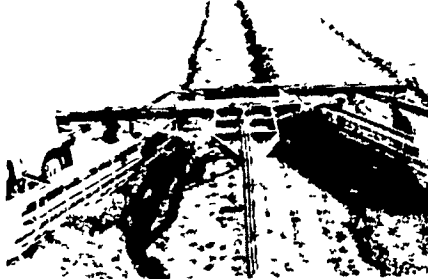


Photo #3

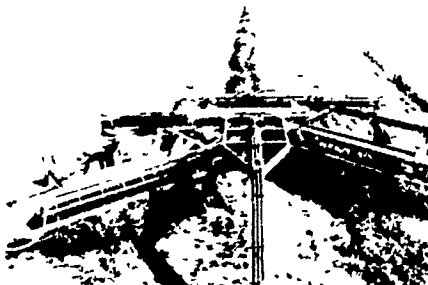


Photo #4

Now benefit not only from hydraulic powered rake action but gain these new hydraulic features for one or both baskets off of a sturdy, streamlined main frame.....

- Eliminate time and labor of hooking and unhooking rakes.
- Hydraulic width and angle basket adjustments for raking multiple rows of hay and beans.
- Hydraulic raising and lowering of baskets for borders and back swath.
- Well balanced main frame for one man hook up.
- Compact transport dimensions (4' high, 8 1/2' wide) (photo #1).
- All phases of basket positioning (in, out, up, down, forward or reverse rake speeds) done from tractor seat.
- Each basket adjustments independent of the other. (photo #2).
- Rake or turn single or double rows of hay (6 to 8 beans) (photos #2, 3, 4).
- Single rake maneuverability with both baskets out Easy backing up for corners.
- Flotation tires, heavy duty wheel spindles, off set wheel positions, only 4 grease inserts and many more outstanding features make the ALLEN 789 RAKE incomparable and the ultimate in effective, versatile and problem free raking with finger tip control of rake speeds to handle any material to your curing and baling preference.

For more information, please call

STOLTZFUS FARM SERVICE, INC.

Cochranville, PA 19330

PH: 215-593-2407

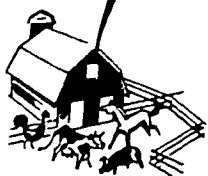
LIGHTNING IS STRIKING!

Are Your Buildings Safe?

LIGHTNING RODS

Now Available

Let Us Estimate The Cost Of Protecting Your Buildings. No Obligation...



C.M. DAVID & ASSOCIATES, INC.
400 N. Race St.
Richland, PA 17087
717-866-7588 (Call)
717-272-8580 (Collect)

HAROLD C. FOSTER
Box 96A
Star Route
Huntingdon, PA 16652
814-643-0248
(Call Collect)