

Pa. Angus farm

(Continued from Page C21)

Heifer Class 7
1. Twin Oaks Farms; 2. Ideal Farm; 3. Berle Farms, Hoosick, N.Y.; 4. Rishels Edlyn Farm.

Heifer Class 8
1. Berle Farm; 2. Brookline Farm; 3. Stonylonesome Farm; 4. Branchwater Farm, Owings Mills, Md.

Heifer Class 9
1. Sugar Loaf Farms; 2.

Pleasant Plains, Clarksburg, Md.; 3. Branchwater Farm.

Heifer Class 10
1. Stonylonesome Farm; 2. Green Pastures Farms.

Calf Champion
Gibbet Hill Farm.

Reserve Calf Champion
Sugar Loaf Farms.

Junior Champion
Stonylonesome Farm.

Reserve Junior Champion
Sugar Loaf Farms.
Grand Champion
Gibbet Hill Farm.

Reserve Grand Champion
Stonylonesome Farm.

Cow Class 11
1. Marlee Farm; 2. ErRer Hill Farm, Friedens.

Cow Class 12
1. Stonylonesome Farm; 2.,3. Stonaire Farm, Lewisberry; 4. Hill Crest Farms, DeLaplaine, Va.

Cow Class 13
1. Sugar Loaf Farms; 2. Stonylonesome Farm; 3.

Warren Angus, Furlong; 4. Stonaire Farm.

Cow Class 14
1. Paul Grude, Cobham, Va.

Cow Class 15
1. Rushel Edlyn Farm; 2. Stonaire Farm; 3.,4. ErRer Hill Farm.

Cow Class 16
1. Berle Farm; 2. Hill Crest Farms; 3.,4. Oatland Farm, Olney, Md.; 5. Devereux-Soleil Farm, Downingtown.

Cow Class 17
1.,2. Harmony Grove; 3. Elceed Farm, Westover.

Md.; 4 Echo Valley Farm, Monkton, Md.

Cow Class 18
1. Echo Valley Farm; 2. Gibbet Hill Farm; 3. Fairfield Farm, Lakeville, Ct.

Cow Class 19
1. Ideal Farm; 2. Quail Covey Farm, Goochland, Va.; 3.,5. Rocky Forge Farm, Hagerstown, Md.; 4. Green Pastures Farms.

Grand Champion
Marlee Farm.

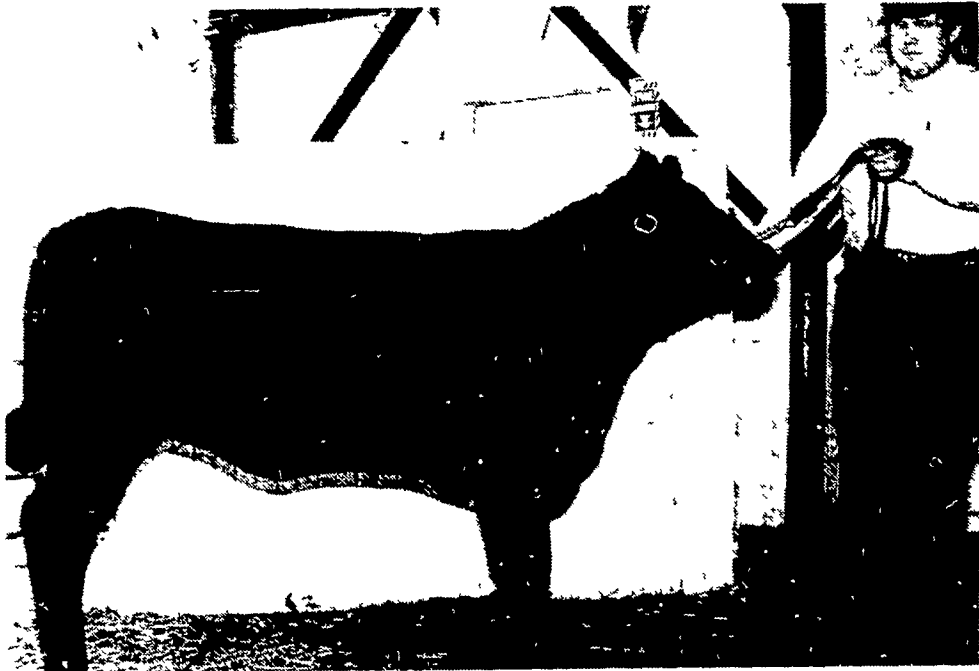
Reserve Grand Champion
Harmony Grove.

BARN PAINTING

Call Us Now
For Free
Estimates

PHARES S. HURST
RD 1, Box 420
Narvon, Pa 17555
215-445-6186

BRUNING Paint Company



The grand champion heifer traveled to Maryland from Maine. Gibbet Hill Bonnie L 2, a May 1979 calf, sold to Johnston Farm, Newmanstown for \$1700.



The reserve grand champion heifer was exhibited by Stonylonesome Farm, Stahlstown.

C.H. Thomas Sons

CUSTOM BUTCHERING

SIDES of BEEF
SIDES of PORK

• CUT • WRAPPED • FROZEN
"Our Own Country Dressed Meats"

CITY MARKETS & PARK CITY
NEW DANVILLE PIKE 717-872-5072

SINCE 1913

YOUR MILK QUALITY GUARDIAN...

Mueller HiPerForm® is the completely automatic milk cooling system for progressive dairymen. Durable HiPerForm Model "OH" and "MHL" Milk Coolers feature large-radius corners and smooth stainless steel welds for easy cleaning. Cooler capacities range from 300 to 6000 gallons. With the flip of a switch, Mueller-Matic® Automatic Washing System cleans the cooler interior with jet-spray wash and acidified rinse.

Ask us for details on HiPerForm milk coolers

USED TANKS 300 Gal. & Up

FOR MORE INFORMATION, CONTACT:

MARTIN'S REFRIGERATION SERVICE

Route No 1, Box 482 Fayetteville, PA 17222
Phone: (717) 352-2783
SALES & SERVICE

M.H. EBY, INC.

Manufacturer of All Aluminum Truck Bodies
Livestock, Grain & Bulk Feed

Distributor of **TIMPT** Trailers

Aluminum Grain Body
Sales & Service

Blue Ball, Pa. 717-354-4971