

# Pa. Angus farm shows reserve champ heifer

**BY SHEILA MILLER FREDERICK, Md.** — Stonylonesome Farm, Stahlstown, was the only Pennsylvania exhibitor participating in the Eastern Invitational Show and Sale to walk away with a championship. Their February, 1978

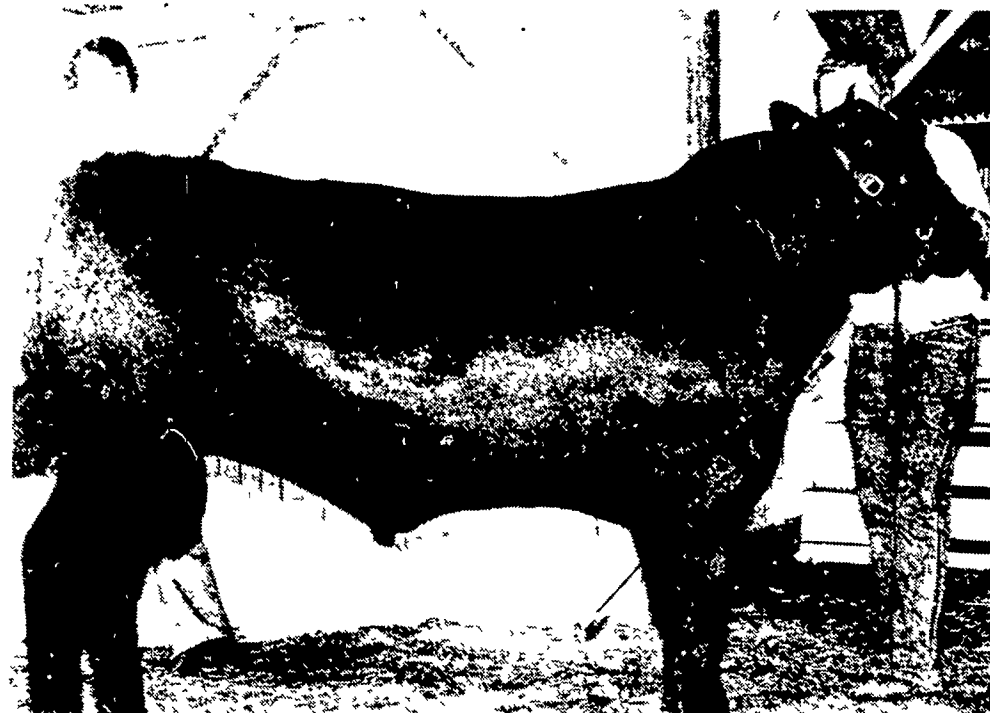
heifer, Blackbird SL 771, was the reserve grand champion heifer at the Angus show held last Sunday. The daughter of Blackbird SL 698, out of Contact of Wye, stood first in her class. She went on to be tagged the Junior champion heifer.

The show's reserve grand champion heifer will be traveling to Somerville, Ohio, joining the other registered Angus cattle at Maebull Angus Farms, the volume buyer at Monday's sale. William and Mae Huber bought the heifer for \$1800.

The Huber's made sure Blackbird had a fitting traveling companion. They also bought the reserve grand champion bull, Sayre Great Horizon, for \$3900. The April 1979 bull was consigned by Sayre Farms, Phelps, New York. He was sired by Sayre Great

Heritage and was out of Blackbird 441H of Sayre. Sayre Farms, for the second year in a row, exhibited the grand champion bull. This year's champ, Sayre Vanguard is a March 1979 bull sired by Sayre Patriot out of Scaara 4691 of Sayre. His 365 day actual weight was 1120 pounds, with a hip height of 51 inches.

A two-thirds interest to this bull and full possession was purchased by Gibraltar Cattle Co., Cape Girard, Missouri for \$24,000. The grand champion cow at Sunday's show was exhibited by Mar Lee Farms, Woodsboro, Maryland. Marlee Maggie Linette 1098, a daughter of Linebacker of Wye, sold to White Hall Farm for \$3800. The reserve grand champion cow, Harmony Jaunty K 3285, was exhibited by Harmony Grove, Lawrenceville, Virginia. She sold to Maebull Angus Farms for \$3280. At this year's sale, 63 lots were sold for a total of \$106,735, an average of \$1694. This was down from last year's sale where 52 lots brought \$95,900, an average of \$1844. This year there were 7½ bulls sold for an average of \$4533. Bad news again—bulls sold better in 1979 when 6 bulls averaged \$2163. There were 55 female lots at this year's sale, averaging \$1309 a piece—a drop from a year ago when the 46 lots averaged \$1803. There were consignors from eight states at this year's show and sale, including New York, Maryland, Pennsylvania, Connecticut, Maine, Virginia, New Hampshire, and New Jersey. The show results are as follows:



Sayre Vanguard was tagged the grand champion bull at the Eastern Invitational Angus show on Sunday. Mark Richardson, manager of Sayre Farms, Phelps, New York, and Greg Krueger, at halter, brought the bull to the Maryland show and sale. Two-thirds interest in the champ sold for \$24,000.

the **ENERTECH 1500**

a beautiful way to conserve electricity

The Enertech 1500 plug-free and renewable wind energy fits your household electric system.

Send \$1 for our 16-page brochure with details on sites, insurance, tests, tax credits and more.

**the stoveman**

energy resource centers

458-8011

p o box 24, uwchland, pa 19480

**A new drive system for even faster unloading**

The new John Deere 714A and 716A Forage Wagons can now unload faster than ever. Top speed has been increased to 11.5 feet per minute to keep your silage-making operation running smoothly. Capacities of 593 and 677 cubic feet mean fewer trips to the silo. See the 714A and 716A today.

**The 7¼-foot-cut 1207... maneuverable enough to conquer your irregular hay fields**

Crooked fence lines, uneven terrain, steep hillsides—they can steal your haying efficiency. Tackle them with our 1207 Mower/Conditioner—the compact machine with big-capacity features. Adjustable roll pressure, platform float, platform stabilizer, flotation tires tucked close to cutterbar, side-to-side and front-to-back balance—all combine to conquer small, irregular fields.

**THE NEW IRON HORSES**

**MORE HORSES MORE IRON**

**More strength throughout from more iron within**

The drawing above gives you a good idea of where John Deere engineers concentrated their efforts when this whole line of tractors was redesigned. As you can see, practically everything but the paint was beefed up in the revision.

Stop in and we'll "walk you through" the iron story on the tractor size of your choice: 90-hp 4040, 110-hp 4240, 130-hp 4440, 155-hp 4640 or 180-hp 4840. We've got all the facts on the NEW IRON HORSES—the tractors with more horses and more iron.

**Bull Class 1**  
1. Sayre Farms; 2. Rishels Edlyn Farm, Glen Rock.

**Bull Class 2**  
1. Sayre Farms; 2. Sugar Loaf Farm, Staunton, Va.; 3. Brookline Farm, Queenstown, Md.

**Bull Class 3**  
1. Zeuswyn Farm, Culpeper, Va.; 2. Harmony Grove

**Bull Class 4**  
1. Wyndcrest Farm, Ashton, Md.

**Calf Champion**  
Sayre Farms.

**Reserve Calf Champion**  
Sayre Farms.

**Senior Champion**  
Zeuswyn Farm.

**Grand Champion**  
Sayre Farms.

**Reserve Grand Champion**  
Sayre Farms.

**Heifer Class 5**  
1. Gibbet Hill Farm, Groton, Ma.; 2. Twin Oaks Farms, Quarryville; 3. Ideal Farm, Augusta, N.J.; 4. Stonylonesome Farm, Stahlstown; 5. Green Pastures Farms, Green Park.

**Heifer Class 6**  
1. Sugar Loaf Farm; 2. Gibbet Hill Farm; 3., 4. Twin Oaks Farms; 5. Marlee Farm.

(Turn to Page C22)

**Souie ALL PURPOSE Farm Building Special**

STRAIGHT WALL CLEAR SPAN, 26 GAUGE STEEL

Any Size Available To Fit Your Needs

**SOUIE** Authorized Dealer  
BUILDING SYSTEMS, INC.

**Builders & Developers Fire Specialists**

**R. J. ELLIOTT REGISTERED BUILDERS**

Allentown, Pa. 18104    Lebanon, Pa. 17042  
215-398-2331    717-272-1794 or 272-3331

— TOTAL CONSTRUCTION SERVICE AVAILABLE —

R.J. ELLIOTT BUILDERS  
3929 Chew Street, Allentown, PA 18104  
Gentlemen: Please send brochure  and/or Have Representative Call  At No Obligation

NAME .....

ADDRESS .....

CITY ..... STATE ..... ZIP .....

AREA ..... PHONE .....

<b>LANDIS BROS. INC.</b> Lancaster, PA 717-291-1046	<b>NEUHAUS'ES INC.</b> RD2, York, PA I-83 Loganville Ext 3 717-428-1953 or 235-1306	<b>ROBERT E. LITTLE INC.</b> Zieglerville, PA 215-287-9643	<b>M.S. YEARSLEY &amp; SONS</b> West Chester, PA 215-696-2990
<b>ADAMSTOWN EQUIPMENT INC.</b> Mohnton RD2, PA 19540 (near Adamstown) 215-484-4391	<b>SHOTZBERGER'S EQUIPMENT</b> Elm, PA 717-665-2141	<b>KERMIT K. KISTLER INC.</b> Lynnport, PA 215-298-2011	<b>AGWAY INC.</b> Chapman Equipment Center Chapman, PA 215-398-2553
<b>PIKEVILLE EQUIPMENT INC.</b> Oyster Dale Road Oley RD2, PA 215-987-6277	<b>A.B.C. GROFF INC.</b> New Holland, PA 717-354-4191	<b>FOSTER EQUIPMENT SALES</b> Elmer, NJ 609-769-1535	<b>I.G. SALES</b> Silverdale, PA 18962 215-257-5136