



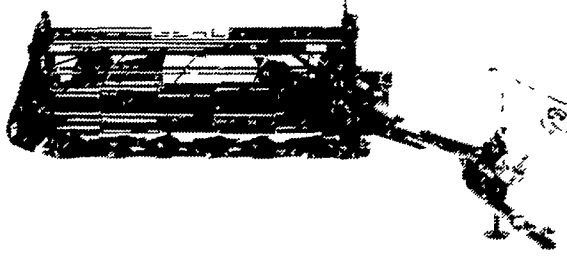
WE SELL THE BEST  AND TRADE THE REST SEE US FOR USED TRACTORS
FINANCING AVAILABLE

- IH 1977 Model 986 w/cab, air, heater, 18 4x38 rear tires, 700 hrs **\$18,960.00**
- IH TD9 Dozer, 10 ft blade, late type model **\$5900.00**
- AC D14 Tractor w/loader, wide front MF Model 1155 w/cab, air, & heater **\$2100.00**
- Oliver 1855D Tractor, late 1971 Model, 3 speed shift, cab, heater, less than 1400 hrs **\$9800 00**
- Oliver 1855D Tractor, no cab, like new, 179 **\$9200 00**
- Used Case 1830 Uni-loader, 60" wide bucket **\$8900 00**
- Used Case 1537 Uni loader, 30 HP **\$7470.00**
- Case 1210 65 HP Diesel tractor, 12 speed **\$3600.00**
- 1586 IH Diesel tractor, cab, air, heater, 600 hrs approximate, 20 8x38 axle duals, clean like new front weights **\$8900 00**
- Case 1175 Diesel tractor, cab, air, heater, 717 hrs **\$27,800.00**
- Case 970 Diesel Tractor, yellow **\$17,900 00**
- Used Case 480 B Diesel Loader & Backhoe, Extindahoe, canopy 1972 Model, 1570 Case Diesel Tractor 20 8x38 Tires Power Shift Deluxe Seat, Dual Remotes Less Than 300 Hrs **\$7856 00**
- Used Case 2290, cab, air, heater, 20 8x38 rear tires, 200 hrs **\$10,860 00**
- Like New 970 Diesel Tractor, less than 50 hrs, 23 1x30 deep lug mud tires, standard shift, 93 HP **\$26,685 00**
- Case 110 HP 1070 Diesel Tractor, no cab, power shift trans, 20 8x38 rear tires, like new with only 520 actual hrs, 1977 model **\$24,900.00**
- Allis Chalmers 7040 Diesel Tractor, cab, air, heater, power shift, 20 8x38 rear tires, low hrs, 1977 model **\$14,900.00**
- 2470 w/18 4x38 dual wheels, 4 remotes, On-The-Go Power Shift Trans, cab, air, heater, 3 pt hitch, PTO, ready for hard work, 526 6 hrs **\$16,400.00**
- 2470 Case 4-wheel drive Diesel Tractor w/cab, air, heater, 20 8x34 tires, 3 pt hitch for in-the-furrow plowing, PTO, 4 remotes, On-The-Go power shift trans, Like new with only 69 8 hrs **\$23,800.00**
- Case 580B Loader Tractor, 1973, rear wt & backhoe, mtg bracket, power shuttle, like new motor **\$36,800 00**
- Farmall A, new paint, cult & plow, good rubber, nice **\$37,800.00**
- Case 580C Canopy Diesel Backhoe and Loader Tractor, low hrs, power shuttle **\$6500**
- Case 530 gas, tricycle type w/Draft-o-Matic 3 pt hitch nice **\$1500**
- IH TD9 crawler loader tractor nice **\$23,800**
- \$3485.00**
- \$6800.00**

NEW FROM GEHL

1080 Disc Mower-Conditioner

★ The Unpluggable Time Saver
 With Speeds Up to 10 Miles Per Hour



Cut, condition and windrow up to 7'10" in even the heaviest crops with this disc mower conditioner. Six counter-rotating, three-knife discs slice through your crop at up to 54,000 cuts per minute, leaving your fields cut short, smooth.

Specially tempered reversible knives feature a 15° lift on the heel, to cut your crop, then lift it, allowing the cutterbar to slide under your crop, reducing machine-crop contact. A special deflector on top of the disc then lifts the crop into the conditioning rolls.

The conditioning rolls then aggressively grab the crop, yet gently condition it, cracking the stems at uniform intervals to speed drying, reduce leaf loss.

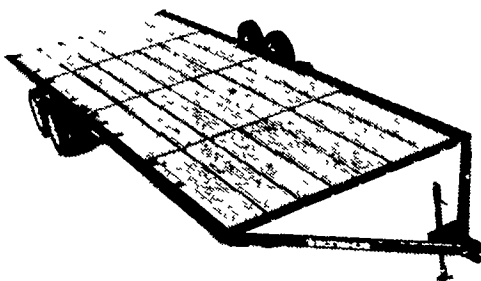
The 1080 disc mower-conditioner features a heavy cover shield adjustable skid shoes for varied cutting heights, flotation tires, hydraulic lift ram, adjustable flotation and conditioning roll pressure, stone guards, and more!

IF YOU ARE TIRED OF PLUGGING WITH YOUR CONVENTIONAL MACHINE, CALL FOR A FREE DEMO.

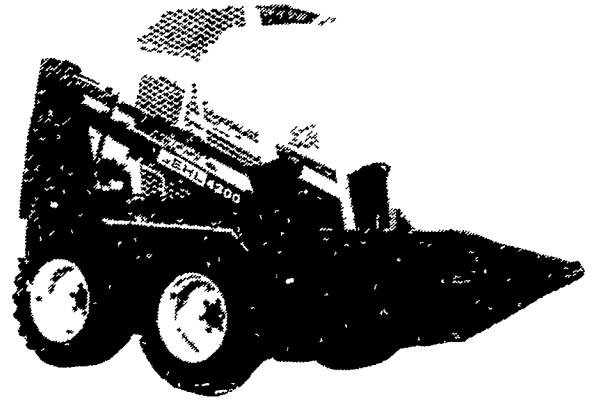


WE DARE YOU TO CLOG THIS MACHINE

NOTICE - ORDER YOUR DONAHUE IMPLEMENT CARRIER NOW!



MODEL	WIDTH	LENGTH	PRICE
721S	7'3"	21'	\$1779.00
728S	7'3"	28'	\$1973.00
828S	8'	28'	\$2097.00
928SR	9'	28'	\$2215.00



SPECIALS OF THE WEEK NEW GEHL MODEL 4500 SKID LOADER

With Hydrostatic Drive and Ford industrial motor 10.00x16.5 tires 65" utility bucket serial #1809 this machine ONLY

\$10,406.80

PLUS With credit approval and 40% down payment, the balance interest free till Sept 1, 1980

MODEL 4300 SKID LOADER,

30 HP Hydrostatic Drive self leveling loader 7.00x15 tires 65" Material Bucket

\$9,957.00

GEHL MODEL 2600 SKID LOADER,

22.5 HP Hydrostatic Drive 5.70x15 tires. 50" utility bucket. 54" manure fork

\$6,900 Only 68" High



HEAVY DUTY SPEED KING 8", 53 Ft. Long, Top Drive TRANSPORT AUGER

With 3 Ft. Flexible Downspout and Flexiboot Hopper, P.T.O. Drive

SET-UP, READY TO GO REG. PRICE \$2584.27

Our Sale Price **\$2059.89**

NEW FROM GEHL 204 WHEEL RAKE

4-wheel, 3-point hitch mounted hay rake. Bad weather, or even a heavy dew doesn't have to spoil your hay crop, not with one of the NEW fingerwheel rakes from Gehl!

Minimum of wearing parts no gears or sprockets floating fingerwheels gently collect all the crop long steel tines "caterpillar" along the ground, gently turning your crop

The model 204 fingerwheel rake can be quickly mounted onto category I or II hitches. Raking, turning, or fluffing can be done quickly with the 204. It's easily adjustable to different working positions by rotating the wheels.

SET UP, IN STOCK **\$885**

TRI STAR ROUND BALE FEEDER IN STOCK

8 Foot Diameter Model RB90

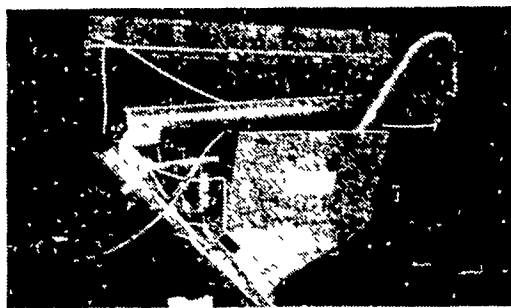
\$127⁰⁰

ROTARY CUTTERS

3 PT. HITCH MODEL

★ Ideal for trimming up around buildings, etc.

5-6-7 Models In Stock



NEW McCURDY 12 ft. Hydraulic Folding Truck Auger

To Mount on your truck tailgate, complete w/winch, downspout tube. Hydraulic hoses extra. **\$568**

IN STOCK

BINKLEY & HURST BROS.



133 Rothsville Station Rd., Lititz, PA 17543 PH: (717) 626-4705

NEW BALE THROWER WAGON

With Oak Floor & Racks, on New 8 Ton Wagon. with Quick Hitch, 11L-15 Flotation Tires, 16 Ft. Long.

COMPLETE UNIT **\$1185**

HEAVY DUTY 3 PT. HITCH SCRAPER BLADES

★ Over 20 IN STOCK, COME & PICK YOUR SIZE

