

# Former Hershey

(Continued from Page B6)

that forms the closed end of the complex.

"The heifer barn has 37 stalls and a large loafing area," he said.

"It opens facing the south, out of the wind, and stays very nice all winter."

The third side of the U-complex is comprised of a large free-stall barn for the milking herd. The barn measuring 98 by 112 feet, has 91 stalls, a holding area, a double-four herringbone parlor and milk room with 1250-gallon tank.

"We were able to cut an hour off our milking time," Ungemach said.

"We now have 75 cows and milking takes about an hour and a half. Before, we



Large feed bunk is located just outside free-stall barn that houses milking herd on the Ungemach farm. milked in a conventional 10-stall stable."

The parlor is equipped with automatic feeders. A couple of black tiles are set into the floor of each milking station. Ungemach uses the tiles for his visual check of the milk and saves considerable time over using the strip cup.

Also in the cow barn is a large box stall used as a treatment and hospital room and also for calving.

An energy converter on the cooling system's compressor pre-heats water before it goes into a hot water tank.

Washdown water flows into two septic tanks, one for settling and the other as an overflow unit. The water is pumped and used to irrigate a meadow that is next to the barn.

A total of four silos are now found on the farm. The cows are fed soybeans for protein, corn silage and haylage, mostly alfalfa that tests at 19.5 percent crude protein. The younger cattle

receive sorghum and grass hay. Dry hay is fed only to the young calves,

Farming a total of 400 acres, the Ungemachs raise all of their own feed. Shelled corn is sold off, along with the marketing of two or three feeder steers a month.

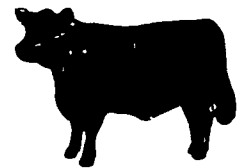
The complex was designed with an eye for the future, too.

"We scrape manure with a tractor and haul daily," Ungemach said.

"We have future plans for a covered manure storage system and it can be fitted into the overall layout very easily.

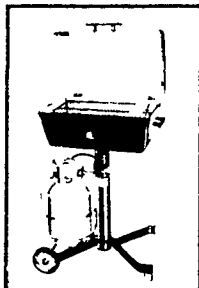
"Our milk room was made large enough for another storage tank, too."

And thus, a dream that began more than 40 years ago goes on.

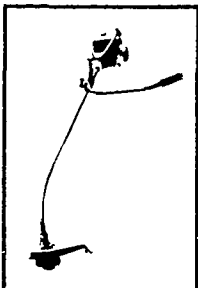


## Get the workhorse with speed

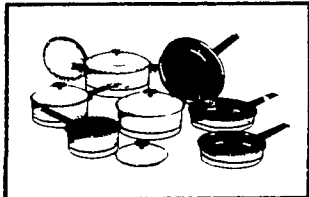
Like a workhorse, the Gehl 940 self-unloading forage wagon is big, steady and dependable. And worm gear drive provides fast, smooth, even unloading. Large diameter drums with spiral teeth arrangement eliminate wrapping. So you keep it moving all day long. Stop in and take a look at this workhorse today.



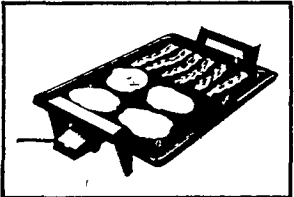
Char Broil gas grill



Toro trimmer



West Bend cookware & griddle set



# FREE!

\*Choose a FREE gift—worth up to \$200—when you buy a new Gehl mower conditioner!

Cash in on this special Spring Fever offer from Gehl! Select one of these valuable gifts when you buy a new Gehl mower conditioner between March 1 and May 31, 1980. You'll get Gehl's rugged dependability, high productivity, and a gift from Gehl worth up to \$200! Stop by today!

# GEHL

## SPRING FEVER

Catch it!

### PEOPLE'S SALES & SERVICE

Oakland Mills, PA  
717-463-2735

### N.G. HERSHEY & SON

Manheim, PA  
717-665-2271

### A. L. HERR & BRO.

Quarryville, PA  
717-786-3521

### S. JOHNSON HURFF

Pole Tavern  
Monroeville, NJ  
609-358-2565 or  
609-769-2565

### STOFFER BROS. INC.

Chambersburg, PA  
717-263-8424

### ARNETT'S GARAGE

Rt. 9 Box 125  
Hagerstown, MD  
301-733-0515

### UMBERGER'S MILL

Rt. 4 Lebanon, PA  
(Fontana)  
717-867-5161

### ZOOK'S FARM STORE

Honey Brook, PA

### BINKLEY & HURST BROS.

133 Rothsville Station Road  
Litzitz, PA  
717-626-4705

### AGWAY, INC.

Chapman Equip. Center  
Chapman, PA  
215-398-2553

### KING'S TOWN

### TRACTOR CO., INC.

Rt. 213 South  
Chestertown, MD  
301-778-1640

### CHAS. J. MCCOMSEY & SONS

Hickory Hill, PA  
215-932-2615

### WERTZ GARAGE

Lineboro, MD  
301-374-2672

### LEBANON VALLEY

### IMPLEMENT CO., INC.

Richland, PA  
717-866-7518

### CLAIR J. MYERS

Lake Road R1  
Thomasville, PA  
717-259-0453

### COLUMBIA CROSS ROADS EQUIP.

RD 2 Box 62  
Columbia Cross Roads, PA  
717-297-3873  
717-297-2991

### PETERMAN FARM EQUIPMENT, INC.

225 York Rd  
Carlisle, PA  
717-249-5338

## FISHER'S SPRAY PAINTING

- SAND BLASTING ■ SPRAY & BRUSH PAINTING
- ROOF COATING ■ CEMENT COATING
- RESTORING



AERIAL LADDER EQUIPMENT  
SPECIALIZE IN FARM BUILDINGS.

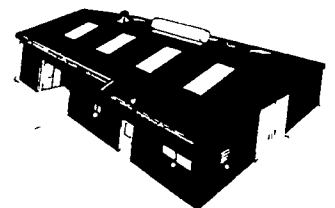
667 Hartman Station Rd.  
Lancaster, PA 17601  
717-393-6530



# VERNON MYERS, INC.

## STEEL BUILDINGS & GRAIN STORAGE

R.D. 4 - Box 845  
Lebanon, Pa. 17042  
Phone: (717) 867-4139



### PLEASE READ THIS:

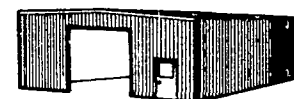
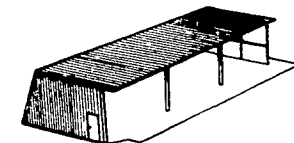
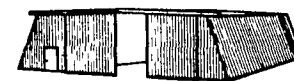
Current levels of grain in storage are high and all indications are that marketing of the grain this year will not follow normal patterns. Therefore, additional storage capacities will be needed this year.

Even with the current economic slowdown, prices are still increasing. We anticipate a rapid rate of increases throughout the industry by year-end.

Take charge and keep control over your crop, your costs, and your market price. Be Prepared! Call us now.

LARGE DISCOUNTS NOW OFFERED  
ON BINS IN STOCK:

- 7' Feed Bin
- 15' Storage Bin
- 15' Hopper Bin
- 30' Storage Bin



No matter what your agricultural or storage needs, there's a Thrif-stor building that's right for your needs.  
Equipment storage  
Livestock building  
Grain storage  
Workshop or Garage

So, wherever you need a low cost, low maintenance, light duty building, let Thrif-stor provide the practical, attractive solution. Give us a call.



COMMERCIAL and AGRICULTURAL BUILDINGS  
We Offer Complete Erection On Any Size Or Style Building.

### Mail Coupon Today!

- SEND STEEL BUILDINGS LITERATURE
- SEND GRAIN STORAGE LITERATURE

NAME \_\_\_\_\_

ADDRESS \_\_\_\_\_

CITY \_\_\_\_\_

STATE \_\_\_\_\_

ZIP \_\_\_\_\_

TELEPHONE \_\_\_\_\_