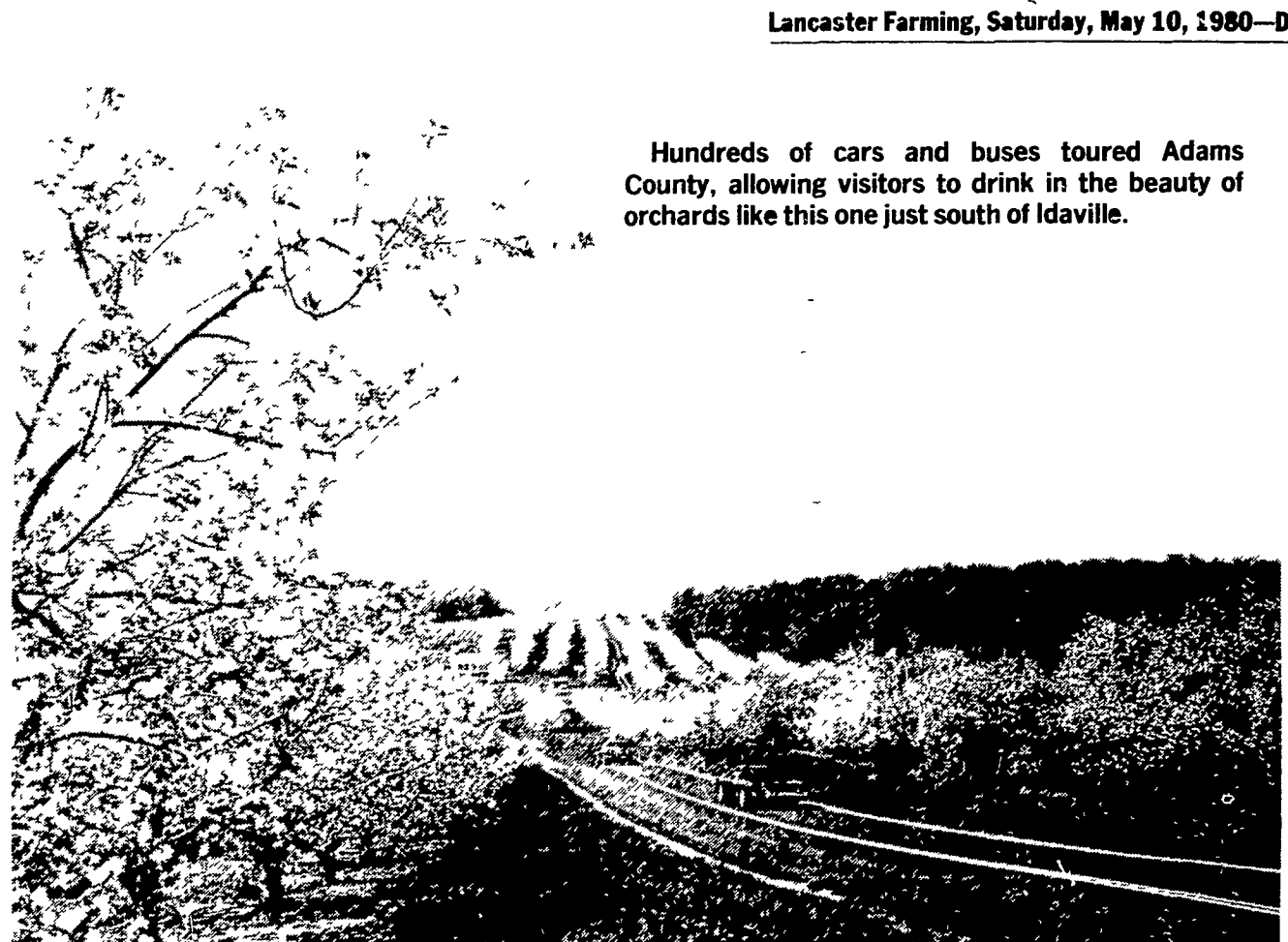




County fruitgrowers provided quality apples, cold cider, and smooth apple butter at their stand during apple blossom festivities.



Hundreds of cars and buses toured Adams County, allowing visitors to drink in the beauty of orchards like this one just south of Idaville.

should dispell any doubts that Adams County's fruit farms are family operations. Good cooking in the County seems to run in the family—and among the top pies were entries baked by a mother, her daughter, and her granddaughters.

In the 11 years and under class, first prize went to Julie Taylor, R 1 Biglerville. The fifth grade student walked off with first place in her division for the third year running. Close on Julie's heels was her sister, seven year old

Amy. She took second place with a pie that was second to her sister's by less than the eyelash of a red mite. Julie's experience in baking obviously told off in the final analysis. Her pie was auctioned off for \$12. In the 12 to 18 years old

classification, Suzie McCleaf, Biglerville, took the first place. Suzie, who was not present for the pie auction, was represented by her father William McCleaf who saw his daughter's pie sell for \$10. Second place was won by

Kim Lott, Biglerville. In the 19 years and over category, Mrs. Shirley Taylor, mother of Julie and Amy, took the first prize, leaving little doubt where her daughters picked up the finer points of pie baking. Mrs. Taylor's pie was

auctioned for \$8. Second place in the division went to Mrs. Virginia McCleaf, mother of Shirley Taylor and grandmother to the Taylor girls. Judges declined to make any comparison or contrast

(Turn to Page D18)

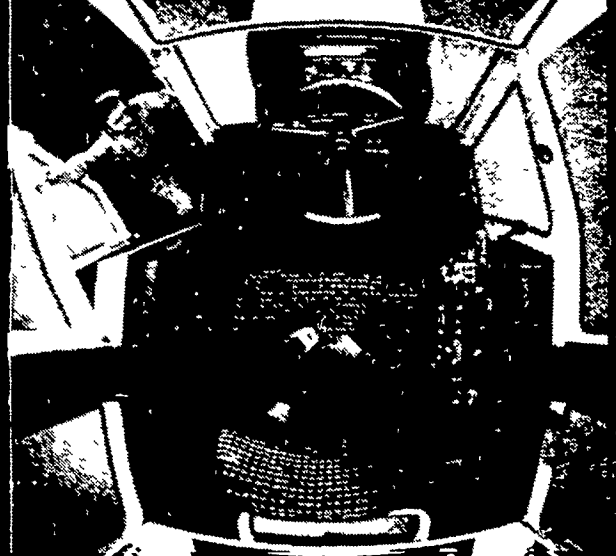
# Case builds but tractors the farm. Tractor Specialist.

**It's important to you:**  
tractors. We're doing something about it improving tractor technology. The result is Case 90 series — that deliver advanced and productivity. The thing you can get very good at what Case has specialized in nothing but the market. We're the Tractor Specialist high performance tractor features farmers

**NEW & USED TRACTORS  
YOU'LL LIKE IT - CALL US!**

## New levels of comfort and field productivity. 108 to 180 hp\*

New Case 90 series tractors can move you up to the comfort and performance levels you should be farming with. **A few minutes in the all-new cab** — testing new controls, seat and steering — listening to the comfortable low sound at operating RPM — will acquaint you with a new working environment hard to equal. **New Case CON TROL hydraulics** give you the best of both open center and closed center systems without the limitations of either. Low noise, low heat and low power needs in the standby mode. **Case 504-cube (8.25 L) engines** in all four models are the kind that built a reputation for Case toughness. **The new 90's fight rust.** Hood, grille, grille screen and side panels are non-metallic. **They're easy to service.** New S-R-M (Simple to Remove for Maintenance) hood elevates and is held high by spring assisted cylinders (except 2090). Batteries are on a swing-out platform. Easy-off side panels. Swing-away oil cooler and condenser for radiator area access. **And there's so much more than we can describe here.** If you've been thinking about higher productivity with big 2WD power, see and test the outstanding new Case 90 series. From the Tractor Specialist. At your nearby Case dealer.




**Bigger and better cab.** Our new 4-post roll protective cab is roomier, quieter, cleaner, easier to see from than any cab we've ever built. The new fabric-covered 8-way adjustable President's Chair, optional, is so comfortable it may leave us no place to look for improvement. And with optional air conditioning, AM or AM/FM radio, 8-track stereo tape deck and 40-channel CB you're getting close to an executive's office on wheels.

New Case CON TROL hydraulics system is a closed center system that varies volume and pressure to meet demands of implement load. Avoids power losses of an open center system which operates at full flow, or of a closed center system which operates at full pressure in the standby mode. Permits multiple functions simultaneously. More adaptable to implements designed for closed and open center systems.



**Quick-connect couplers** (above left) are positioned for sure identification. Swivel to line up. Can be coupled under pressure. **Primary hydraulic pump** (above center) supplies up to 26 GPM (98 L/min) — with an individual **8 GPM (30 L/min) pump** for power brakes and steering. **Optional flow control knobs** (above right) individually regulate flow and work speed for up to 4 remotes.

**We're parts and service specialists, too.** As the Tractor Specialist, your Case dealer serves you from a parts inventory designed for speed and efficiency. Our dealers are also pledged to provide fast, expert handling of your Case tractor service needs.

**J I Case**   
A Case International Company  
10000 North 17th Street, Omaha, NE 68131, U.S.A.



Model 2290

Model 2390

Model 2590