

Herr Farm & Home Supply opens

WILLOW STREET—With a quarter-century of business in the livestock, grain and poultry equipment business, E. M. Herr

Equipment, Inc., R1 Willow Street, has expanded into supplying the complete needs of farmers and suburban home owners alike

held at the 20,000-square foot store, located along Rt. 272 a mile south of Willow Street, on Friday and Saturday, May 16 and 17.

"Our new Farm and Home Supply Store is designed to be a one-stop shopping facility to serve both farmers and suburbanites," Marvin Herr, president, explained.

"In keeping with our long-standing practice in the equipment business, we will provide a full sales and service program in the supply store."

A grand opening will be

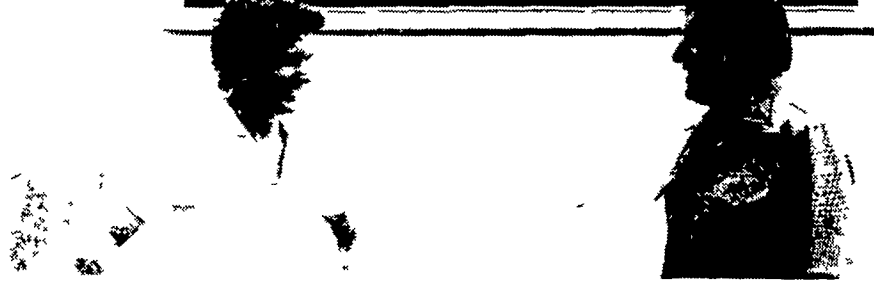
Born and raised on a general farm, Herr launched the equipment business in the mid-1950's. With a layer operation on the Herr farm, the business began in the poultry equipment area and later diversified into grain and livestock equipment, specializing now in modular hog farrowing and nursery housing.

Equipment installations have extended widely throughout a six-state area

BARN PAINTING
Call Us Now
For Free
Estimates

PHARES S. HURST
RD 1, Box 420
Narvon, Pa 17555
215-445-6186

BRUNING Paint
Company



Discussing opening of new Farm & Home Supply Store, south of Willow Street, are Marvin Herr, right, and son, Dennis.

of Pennsylvania, New York, New Jersey, Delaware, Maryland and Virginia.

The Farm and Home Supply Store is associated with the "Wheat Belt" merchandising group, which is based in Des Moines, Ia. Very popular throughout the Midwest, this is the first Wheat Belt facility to be located east of Illinois.

The store maintains a complete inventory of approximately 4,000 items, including animal health products, automotive supplies and accessories, clothing and footwear, electric supplies, farm equipment, general hardware, lawn and garden, livestock equipment supplies, oil and lubricants,

paint, plumbing, hand and power tools.

The Herr operation now includes more than 40 employees. Among them are:

Marvin Herr, president; his wife, Yvonne, secretary; their son, Dennis, equipment manager; Richard Zeigler, Farm and Home Supply Store manager; Larry Berard, assistant manager;

Arlene Smith, office manager.

Also, Richard Burkholder, grain equipment sales; Lee Walker, poultry equipment sales; John Tompkins, livestock equipment sales; Carl Smith, service manager; Emanuel Stoltzfus, foreman; and Cletus Weaver, parts manager.—DA

AMERICAS
Nu Products

"I'm Nu Mu from Americas introducing a complete line of Nu products. Here's just a sampling."

Americas Nu-Oil Reclaimer

Americas Nu-Vac Pump & Oiler

Americas Bodmin Nu-Pulse Milker

Distributed By:

Keystone Nu-Pulse

Cochranville, PA 19330
215-932-4700

SALES REPRESENTATIVE:
Curt Cassidy
PH 717-626-1065
Before 7 A.M After 6 P.M

I WANT TO KNOW MORE ABOUT BODMIN NU-PULSE

Name _____

Address _____

City _____

State _____ Zip _____

Phone _____

Interested in Bodmin Milker
 Interested in Dealership

AUTHORIZED DEALERS:

SULLIVAN CO

WILLIAM HUNSINGER
RD 1 Box 13A
Dushore, PA 18614
717-928-8714

SO. LANCASTER CO

LAPPS HARDWARE & DAIRY SUPPLIES
RD 4 Box 96 (Loop Rd)
Quarryville, PA 17566
717 786-3970

NO. LANCASTER CO.

T.S. BURKHOLDER FARM REFRIGERATION
RD 2, Box 618
Ephrata, PA 17522
717-859-1145

SOMERSET CO

SAM WEIDNER
Somerset, PA 15501
814-445-8921

LEBANON & BERKS CO.

CLYDE C. LUTZ
Ephrata, PA 17522
717-738-1718

SUSQUEHANNA CO.

JIMS EQUIPMENT
R1 Box 96
Springville, PA 18844
717-942-6928

WAYNE CO.

DONALD SCHMIDT
RD 1 Box 258A
Hawley, PA 18428
717-253 2409

SOUTH JERSEY

WOODSTOWN ICE & COAL COMPANY
50 E Grant St, Box 184
Woodstown, N J 08098
609 769 0070

MIFFLIN CO

BYLER'S DIESEL & REFRIGERATION
Belleville, PA 17004

LYCOMING CO.

JAMES LUCKENBILL
RD2 Montgomery, Pa 17752
717-547-1516

HUNTINGDON CO.

CLAPPER FARM EQUIPMENT, INC.
Alexandria, PA 16611
814-669 4465

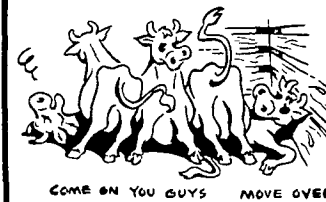
MARYLAND

DONALD SHENBERGER
RD 4 Box 42
Hagerstown, MD 21740
301-733 7281

MONTGOMERY CO.

PENN VALLEY CROPSTORE INC.
Schwenksville, PA 19473
215-287-9650

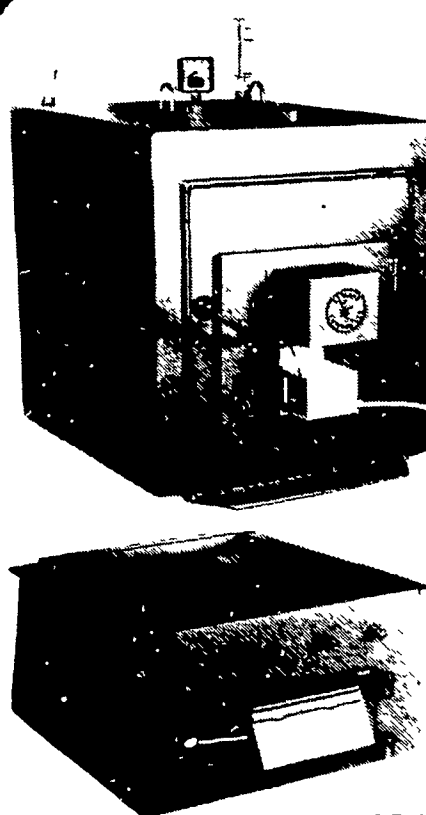
THOUSANDS OF UNITS
INSTALLED IN
PENNSYLVANIA



COME ON YOU GUYS MOVE OVER!

NEED MORE ROOM?
Read The Classified Real Estate Ads

An Automatic COAL-WOOD FURNACE with ROTARY GRATE? GREAT!



AN ESHLAND INOVATION... WORKING FOR YOU!

These units are designed for burning both Coal and Wood with maximum efficiency and convenience.

The conditions for burning these two fuels are considerably differentand Eshland designers met the challenge.

The AUTOMATIC DUAL DRAFT system, and unique ROTARY GRATE make it extremely convenient and easy to switch from one fuel to the other... and THERE'S MORE...like,

- Large Capacity 40 & 55 Gal. Models
- Aquastat Controls
- Available in two parts for easy handling and installation.
- Economical source of domestic Hot Water.



CALL OR WRITE FOR FREE CATALOG
ESHLAND ENTERPRISES INC.

Box 23, Greencastle, Pennsylvania 17225

Pa. 1-800-632-1896

U.S.A. 1-800-233-1995

Manufacturers of Boilers, Hot Air Furnaces Freestanding stoves, & Fireplace inserts.