

Geib urges

(Continued from Page C19) River per minute. That's just one river. With such vast amounts of pollutants being constantly added, the ocean can no longer cleanse itself. The demand of oil has added another pollutant. An estimated ten million tons of oil are dumped into the oceans annually. Accidents and disasters such as the Torrey Canyon Tanker spill account for only twelve per cent of the oil. Sixty per cent comes from flushing of oil tankers. The remaining eighteen per cent comes from commercial firms and industries. Hopefully by training the crews that man the tanks better, many accidents will be avoided.

"Another growing concern is thermal and radioactive pollutants. Discharge water from an ever increasing amount of nuclear plants can raise the water's temperature greatly. The air conditioners that cool the World Trade Center raise the temperature of the Hudson River ten degrees at the discharge outlet. When water is warmed, it is unable

to hold as much oxygen, endangering aquatic life. This coupled with releases of radioactive wastes can make a clean river devoid of life.

"Agriculture is another major water polluter. Chemicals, fertilizers and eroding soil all effect water. In the western United States, overuse of irrigation on the North Platte River has caused tremendous drops in the water table. Each state wants to drain the river before it leaves the state lines, but other states need water, too. In recent years, arguments have surfaced about water rights and pollution. As the irrigated water drains from the fields, it picks up fertilizer and insecticide residues, polluting the water table. The towns along the river

complain about the polluted water and then go and pollute it worse. This continues until the water is unfit for consumption without being treated, which hurts the entire economy. Farmers must be aware of the soil properties of the fields they crop. They must practice conservation measures to avoid soil runoff and soil leaching. They have to learn to do their part, for in the end it affects everyone.

By now you may be saying, what has water pollution got to do with me? Man is dependant on water. Sixty per cent of the human body is composed of water. The human body requires one to two quarts of water per day to carry out body functions. It takes seventy-five gallons of water to produce one ear of corn,

23,000 gallons to produce one pound of red meat, and industry requires 44,000 gallons of water to manufacture one automobile. At current population growth, we must learn to conserve and protect water, or our nation may be in trouble!

"Everyone must pitch in to help save this valuable resource. Farmers must learn to use fewer chemicals and practice better erosion control techniques. Industry must learn to purify and recycle the water that they use. Some of you may be saying, what can I do? There are unlimited ways that you can help in water clean-up. Work to promote legislation for stricter water standards. Find out whether your town or household has adequate sewage treatment. Use phosphate-free detergents

and be active in your local watershed projects. Join local conservation clubs and spread the word around about the need for water conservation. If we all pitch in now, may be, just maybe,

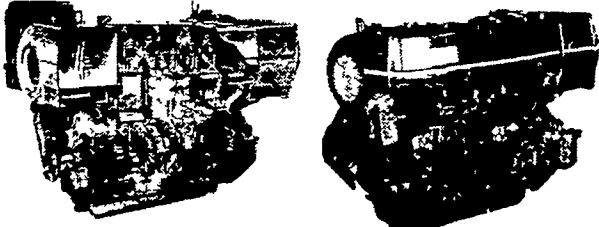
we will live up to the goal of the Clean Water Act, to have fishable, swimmable waters by 1985. The time is here; water, water everywhere, but do we have a drop to spare?"



Authorized Dealer Of



ADAPTABLE TO MOST APPLICATIONS



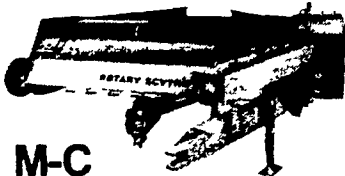
From 13HP to 200HP

OIL COOLED WATER COOLED AIR COOLED

EASY

WAY TO MAKE HAY

- Mows and conditions in 1 trip
- Non stop No plugging
- Saves rain soaked hay crop
- Handle any hay crop better

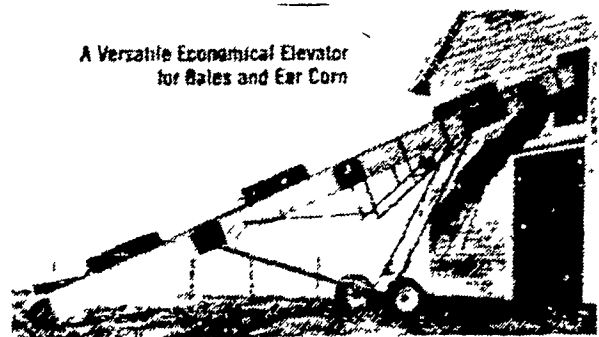


M-C Rotary Scythe

7 FT. & 9 FT. IN STOCK

ZIMMERMAN PORTABLE ELEVATORS
Will Carry Your Corn And Hay

A Versatile Economical Elevator for Bales and Ear Corn



28 ft. **\$950** 32 ft. **\$1075**
36 Ft. and 40 Ft. Also Available

SALES & SERVICE

MILLER'S REPAIR

1 Mile North of Bird-in-Hand
8 Miles East of Lancaster
RD1, Bird-in-Hand, PA PH: 717-656-9013

LEROY B. ESH HARDWARE

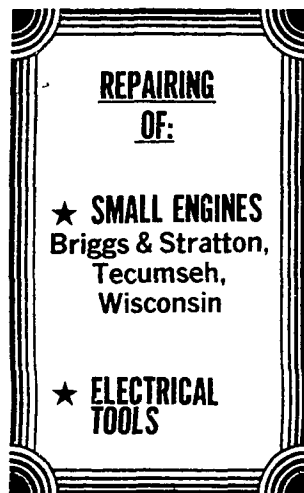
3453 Old Phila. Pike, Ronks, Pa.

LOCATED IN INTERCOURSE, PA OPPOSITE C. B. HOOBER & SON

CALL ANYTIME 768-3681 IF NO ANSWER CALL 768-8677

Hours: DAILY 6 a.m. to 6 p.m. — Saturday 6 a.m. to 4 p.m.

FREE DELIVERY IN AREA



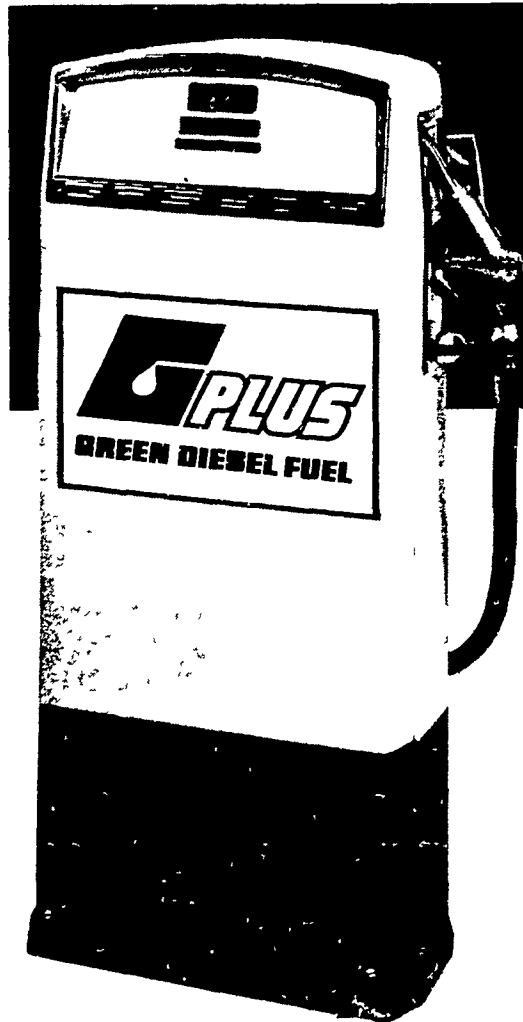
- CHAIN SAW SHARPENING
- LAWN MOWER SHARPENING
- FARM & GARDEN TOOLS
- TRU TEMPER
- AMES
- BALER & BINDER TWINE
- POWER TOOLS - BLACK & DECKER, SKILL, ROCKWELL



- TORO LAWN MOWERS
- YARDMAN - LAWN FLITE
- PUSH MOWERS
- POULAN CHAIN SAWS

TOP LINE MECHANICAL & CARPENTER TOOLS
Including: SK - PLUMB - STANLEY - DISSTON - MARSHALLTON - EXACT

★ MOST PRICES MARKED AT LEAST 10% OFF RETAIL PRICE

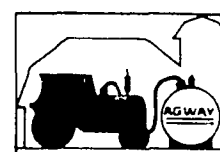


Green Diesel Fuel

A master blend by Agway

IN NEARLY EVERY BRAND OF DIESEL TRACTOR

Agway Green Diesel Plus gives faster starts, cleaner burning, and more power than conventional fuels. It combines the best features of Agway #1 and #2 Green Diesel to give you a superior year 'round premium grade fuel. Call today.



MEMBER PRIORITY SERVICE
AGWAY PETROLEUM

AGWAY PETROLEUM

BOX 1197, DILLERVILLE ROAD, LANCASTER, PA

Call 717-397-4954

AGWAY