

# Livestock market and auction news

## Oklahoma Cattle

Thursday, May 1

Report supplied by USDA  
Estimated Receipts 8,000  
Same Day Last Week 8,475  
Early sales fairly active, steady; later slow, steady to 1.00 lower. Majority receipts medium frame 1, 600-800 lbs. feeder steers and 400-700 lbs. heifers. Good buyer attendance.

**FEEDER STEERS:** Medium frame 1, few lots 400-500 lbs. 80.00-90.00; shipment 406 lbs. 91.75; 600-700 lbs. 64.00-67.50; 700-800 lbs. 62.50-66.00; 800-900 lbs. 62.00-63.25, lot 800 lbs. 65.00; 900-1000 lbs. 60.00-62.00. Medium frame 1-2 600-700 lbs. 63.00-64.00. Large frame 2 holsteins 500-600 lbs. 60.00-62.25; 900-975 lbs. 57.50-58.50.

**FEEDER HEIFERS:** Medium frame 1, few shipments 350-400 lbs. 70.00-75.50, load thin 400 lbs. 75.40; 400-500 lbs. 64.00-72.00, lot 440 lbs. 73.60; 500-600 lbs. 60.00-64.00; couple lots thin 515 lbs. 68.00; 600-700 lbs. 59.00-61.50, consignment 615 lbs. 62.50. Medium frame 1-2 600-700 lbs. 56.50-59.50.

**FOR THE WEEK:** Feeder steers and heifers under 500 lbs. firm to 2.00 higher. Steers over 500 lbs. 1.00-3.00 lower; heifers over 500 lbs. 1.00-2.00 lower. Slaughter cows steady to 1.00 lower. Mid-week sales Utility and Commercial 2-3 cows 43.75-47.75; YG 3-4 and low

dressing 2-3 42.50-45.00. Cutter 1-2 43.25-46.50; Canner and low Cutter 38.00-43.25. Bulls steady. YG 1-2 1075-1700 lbs. 56.25-62.00. Salable receipts this week near 22,000 head compared with 22,871 last week and 26,523 the same period one year ago. Feeder steers and heifers comprised 95 percent of the run; cows and bulls 5 percent.

## Hunter's Auction

Monday, April 28  
Rising Sun, Md.

Report supplied by auction  
**BULLS:** 800-1460 lbs. 57.00-58.75.

**COWS:** High Choice to Prime 52.25-54.50; Good to Standard 49.75-51.75; Utility 47.50-49.00; Cutters 45.75-47.00; Cannerns 44.00-47.00.

**CALVES:** Prime 220-240 lbs. 115.00-146.00; High to Choice 140-180 lbs. 95.00-115.00; Good to Choice 120-140 lbs. 90.00-102.00; Standard to Good 90-115 lbs. 77.00-98.00; Utility 75-85 lbs. 70.00-82.00; Low Utility 65-75 lbs. 65.00-77.00.

**FEEDER PIGS:** 25-30 lbs. \$12 to \$18 by hd.; 35-40 lbs. \$18 to \$22 by hd.

**HOGS:** 180-220 lbs. 37.00-41.00.

**SOWS:** 25.00-28.50.

**BOARS:** 25.00-27.00.

**GOATS:** Kids \$20 to \$35 by hd.; Nannies \$24 to \$37 by hd.; Billies \$29 to \$45 by hd.

## St. Louis Cattle

Thursday, May 1

Report supplied by USDA  
Receipts this week 6,300  
week ago 7,600  
Year ago 6,300

Compared to the previous weeks close, Slaughter Steers fully 1.00-1.50, instances 2.00 higher except Holstein Steers 2.00-3.00 higher. Slaughter Heifers fully 1.00 higher. Cows 2.00 to mostly 3.00 lower. Bulls steady. Slaughter supply mainly Choice and Mixed Choice and Prime 2-4 Slaughter Steers, around 35 Heifers and 15 Cows.

**SLAUGHTER STEERS:** Mixed Choice and Prime 2-4 1050-1275 lbs. 64.50-65.00, most closing sales 65.00, load at 65.25; couple loads 3-4 1150-1275 lbs. 62.00; load 4-5 1350 lbs. 58.50. Choice 2-4 950-1300 lbs. 62.50-65.00, closing 63.50-65.00. Mixed Good and Choice 2-4 900-1200 lbs. 61.50-63.50. Good 2-3 900-1150 lbs. 60.00-62.50. Standard to Good 2-3 1050-1450 lb. Holsteins 57.00-61.00. Few standard 1200-1350 lbs. 54.00-57.00.

**SLAUGHTER HEIFERS:** Mixed Choice and Prime 2-4 875-1050 lbs. 62.50-63.50, closing 63.00-63.50; 3-4 900-1100 lbs. 61.00-62.00. Choice 2-4 800-1050 lbs. 61.00-63.00, closing sales 61.50-63.00. Mixed Good and Choice 2-3 700-1000 lbs. 60.00-61.50. Good 2-3 700-950 lbs. 58.00-30.50.

**COWS:** late Utility and

Commercial 2-4 38.00-42.00. Boning utility 1-2 42.00-45.00. Cutter 1-2 38.00-41.00. Canner and low Cutter 1-2 35.00-38.00.

**BULLS:** Yield grade 1-2 1050-1900 lbs. 54.00-58.00. Yield grade 1 1300-1900 lbs. 59.00-60.00.

**FEEDERS:** (including around 2,000 at the regular Thursday Auction) Feeder Steers and Heifers steady. Demand rather good for bulk of moderate supply. Receipts mainly Medium Frame 1 400-900 lb. Steers and 350-600 lbs. Heifers.

**FEEDER STEERS:** Medium Frame 1: Lot 286 lbs. 81.00; 350-500 lbs. 73.50-79.00; 500-600 lbs. 70.00-77.00; 600-700 lbs. 63.00-70.00; 700-800 lbs. 63.50-66.00.

**Large Frame 1-2** Holsteins: Lot 460 lbs. 62.25; lot 695 lbs. 59.50; couple lots 985-1000 lbs. 54.00-56.00.

**FEEDER HEIFERS:** Medium Frame 1: Lot 250 lbs. 78.00; 350-400 lbs. 66.50-72.25; 400-500 lbs. 60.75-66.50; lot thin 402 lbs. 72.00; 500-600 lbs. 59.00-64.50; 600-650 lbs. 58.25-61.25.

Medium Frame 1-2 and some small frame 1: 400-550 lbs. 57.00-62.25.

## Omaha Cattle

Thursday, May 1

Report supplied by USDA  
Midweek prices on slaughter steers were 25-50 higher. Heifers closed firm

to 25 higher. Cows were 1.50-2.00 lower and bulls firm to 1.00 higher but closing dull.

Four Day Receipts 13,500; Last Week 12,200; A Year Ago 13,600.

Slaughter steer and heifer prices advanced slightly under a generally good demand, with usually mild day-to-day price variations. One major buying interest returned after being out of operation for three weeks with labor difficulties, and there was a continued good demand for cattle to be slaughtered outside the immediate Omaha area. Marketings were moderately expanded over the previous week despite pressing field work, but were well distributed over the trading period; slaughter under federal inspection was also larger than a week earlier. The overall finish of the steer and heifer supply was quite attractive with a liberal percentage choice, although many consignments were Mixed 3-4 yield grade. Slaughter steers made up approximately 46 pct and heifers 31 pct. Cows comprised 12 pct. and feeders 8 pct.

**STEERS:** Two loads Choice and Prime 1259 lbs. predominately 3 66.25, highest locally in six weeks, load Choice with end Prime 3 1175 lbs. 65.65. A moderate volume Choice 3 and Choice and Prime predominately 3 1122-1263 lbs. 65.25-65.50, load Choice and Prime 1514 lbs. Large percentage 4 62.00. Choice 2-4 1025-1300 lbs. bulked 64.00-65.00, some with increased percentage 4 63.00-63.50. Mixed Good and Choice 2-3 1000-1250 lbs. 63.00-64.00. Good 2-3 61.00-63.00. Good and Choice 2-3 1300-1400 lbs. holsteins 58.75-59.50. Average of LS-214 detailed quotations for Choice 990-1100 lbs. steers this week 64.30; Choice 1100-1300 lbs. 64.30. Average weight steers this week 1172 as compared 1165 lbs. last week. Average weight heifers this week 1016 lbs. as compared 1013 lbs. last week.

**HEIFERS:** Two loads Choice 3 1093 lbs. 64.25, five loads and part loads Choice with end Prime largely 3 972-1105 lbs. 64.00. Choice 2-4 900-1075 lbs. 62.00-63.50. Mixed Good and Choice 2-3 61.00-62.25. Good 2-3 57.00-60.00.

**COWS:** Utility and Commercial 2-4 41.50-44.50. Cutter 40.00-42.50. Canner and low-Cutter 37.00-40.00.

**BULLS:** 1-2 1400-2100 lbs. 55.00-62.00, an individual high dressing 1 65.00 at midweek.

**PERKIOMENVILLE LIVESTOCK & SALES**

Perkiomenville, PA  
Sale Every Monday

Egg Auction - 12 Noon  
Dairy Cows - 2 P.M.  
Hogs - 4 P.M.  
Steers, Bulls, Cows - Starting at 5 P.M.

Also  
Flea Market  
starting at daylight  
PH: 215-234-4733

## Chambersburg Auction

Thursday, May 1

Report supplied by PDA  
**CATTLE:** 406. Compared with last Thursday market: Slaughter steers unevenly steady; SL cows \$5 lower; SL bulls \$1-2 lower. SL steers Choice No. 2-4 975-1400 lbs. 59.85-62.50, few 64.00; Good 57.50-59.50; Standard 55.00-57.00; SL heifers few Good & Choice 57.50-59.85. SL cows Utility & Commercial 44.0-48.75, few 50.60; Cutters 45.00-48.00; Canner & L. Cutter 43.00-46.75; Shells down to 38.00; SL bullocks few Good and Choice 53.10-56.00; SL bulls Yield Grade No. 1, 1250-1850 lbs. 51.50-60.85; few Yield Grade No. 2 900-1700 lbs. 46.50-52.10.

**FEEDER CATTLE:** Steers & Bulls Large Frame No. 1 400-700 lbs. 59.00-69.00, few 74.00; Heifers, Large Frame No. 1 & 2 350-600 lbs. 53.00-65.00.

**CALVES:** 372. Vealers grading Choice steady to \$5 higher, Standard and Good about steady. Few Prime 118.00-123.00; Choice 98.00-107.00, couple to 117.00; Good 80.00-102.00; Standard & Good 70-95 lbs. 69.00-74.00. Utility 50-90 lbs. 50.00-69.00.

**FARM CALVES:** Hol. Bulls 90-125 lbs. 75.00-121.00, mostly 90.00-110.00; Hol. Heifers 85-150 lbs. 125.00-175.00, couple to 200.00.

**HOGS:** 78. Barrows and gilts 25 cents to \$1 lower. No. 1-3 210-240 lbs. 29.00-30.50. Sows US No. 1-3 275-500 lbs. 20.00-23.00. Few Boars 22.25-23.75.

**FEEDER PIGS** 36. Few US No. 1-3 25-30 lbs. 13.00-14.00; few No. 1-3 45-50 lbs. 19.00-20.00.

**SHEEP:** 11. Spring sl. lambs 1 lot Good 48 lbs. 65.00; few SL ewes: 33.00-49.00.

## Belleville Auction

Wednesday, April 30

Report supplied by PDA  
**CATTLE** 136. Compared with last Wednesday's market, slaughter cows steady to \$1.50 lower. One Good slaughter heifer at 56.50. Utility & Commercial slaughter cows 46.50-49.60, Cutters 46.25-48.25, few Canner & Low Cutter 40.50-44.50, Shells down to 38.60. Yield Grade #1 900-1950 lbs. slaughter bulls 51.35-57.85. Few Medium Frame #2 300-500 lbs. feeder heifers 56.00-60.00, couple to 75.00.

**CALVES** 164. Few Choice vealers 94.00-114.00, few Good 65.00-80.00, Standard & Good 70-90 lbs. 58.00-70.00. Farm calves, holstein bulls 85-120 lbs. 68.00-85.00, few to 97.50; few holstein heifers 80-100 lbs. 85.00-170.00.

**HOGS** 382. Barrows & gilts weak to \$1.50 lower. US No. 1-2 200-245 lbs. barrows & gilts 29.10-29.85, No. 1-3 200-255 lbs. 28.75-29.60, No. 2-3 220-280 lbs. 27.50-28.60. US No. 1-3 275-500 lbs. sows 23.00-26.50. Few Boars 20.75-22.00.

**FEEDER PIGS** 528. US No. 1-3 20-35 lbs. feeder pigs 13.50-22.00 per head, No. 1-3 35-50 lbs. 19.00-24.50, No. 1-3 50-65 lbs. 23.00-27.50, Utility 25-40 lbs. 8.50-12.50 per head.  
**SHEEP** 30. Few Choice 35-40 lbs. spring slaughter lambs 97.50-125.00, few 50-75 lbs. 75.00-85.00. Slaughter ewes 24.00-39.00.



### USED TRACTOR

MF 165 Gas with Sauder Loader ..... \$3950

### USED TRACTORS

IHC Super C, fast hitch w/2 bottom plow \$1,675.00

### USED SPREADERS

JD 40 w/hydraulic end gate \$1,050.00  
NH 510 single beater 850.00

### USED HARVESTER SPECIALS

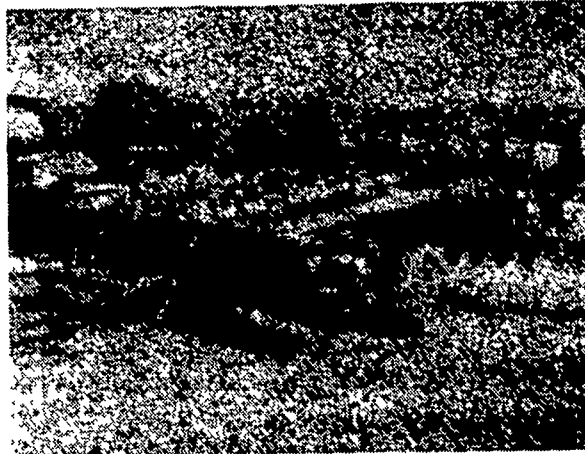
NH 880 2-rcw narrow row head \$3,650.00  
NH 717 w/1-row head 2,195.00  
NH 717 1,175.00  
Fox 1000 RPM PTO w/2-row corn hd & Pk.up attach. 1,495.00

### USED BALER SPECIALS

JD 24T w/#30 thrower \$2,450.00  
NH 275 w/thrower 2,450.00  
NH 2, SOLD 1,850.00  
NH 268 1,350.00  
JD 24T w/#2 ejector 1,650.00  
John Deere 14T 750.00  
John Deere 14T w/ejector 450.00  
New Holland 68 550.00

### USED GRAIN DRILLS

Co-op 15x7 Fert. Grain Drill w/grass seed attach. \$750.00  
Ontario 15x7 650.00



### USED DISC

John Deere 210, 11'-5" ..... \$3250

### USED MOWER CONDITIONERS HAYBINES

New Holland 1495, SP 12' w/partial cab, real sharp \$14,750.00  
New Holland 479, as is 2,150.00  
Mower Conditioners-NH 469 2,550.00

### USED PLANTER SPECIALS

John Deere 1250 6R Plateless \$2,450.00  
John Deere 494 A 1,250.00  
Oliver 4-row Plate 1,250.00

### USED TILLAGE SPECIALS

Brillion 12' Roller Harrow \$1,450.00  
Ford 4-16" Plow 950.00  
JD KBA 32x18 Wheel Carrier Disc 875.00

### USED COMBINE SPECIALS

Cockshutt 427 w/Power Steering & 10' Platform \$1,450.00  
JD 55 Corn Soybean Special 12' head 9,700.00  
JD 55 Diesel w/cab, 12' platform 7,500.00

### MISCELLANEOUS

John Deere 148 Loader \$2,200.00  
John Deere #58 Loader A-1 Shape 1,800.00  
John Deere #18 1-row Corn Picker 950.00  
New Set 18.4x30 Snap on Duals w/New Goodyear 6 Ply Tires 1,050.00  
Used NH #8 Crop carrier 1150.00



## Evergreen Tractor Co. Inc.

30 EVERGREEN RD., LEBANON, PA 17042  
PHONE (717) 272-4641

AUTHORIZED  
PERKIOMENVILLE  
PARTS and SERVICE