


GARBER OIL CO.



Fuel Chief HEATING OIL

& OIL HEATING EQUIPMENT
AIR CONDITIONING
MOUNT JOY, PA
Ph 653-1821

Land preservation moves ahead in Md.

ANNAPOLIS, Md. — As the Maryland Agricultural Land-Preservation program approaches its first anniversary some eight counties now have voluntary preservation districts established, totaling 10,500 acres of productive farm land.

The 41 districts established so far are in Anne Arundel, Caroline, Carroll, Dorchester, Frederick, Harford, Howard, and St. Marys Counties.

Petitions requesting the establishment of additional districts are now in the

works in Baltimore, Calvert Charles, Garrett, Montgomery, Talbot, and Washington Counties. (These additional districts, if all approved on the local and state level, would increase the acreage in the program to as much as 18,000 acres.)

Carroll County is the leading county for district establishment with districts now formed comprising 3,350 acres.

The Maryland Agricultural Land Preservation Foundation, which administers the program on the state level, has now begun to acquire development rights easements; some initial option contracts have been signed, and by June the Foundation should have acquired, or be moving toward settlements for development rights on 15 of the 16 farms for which development right easement sale offers have been tendered upon request of the owners.

The Foundation, part of the Maryland Department of Agriculture, has received easement funding from the General Assembly totaling \$5 million. The latest funding appropriations were allocated by action of the 1980 session of the legislature and totaled \$3 million coming from the state's open space program. Earlier sessions of the legislature had provided \$2 million in easement purchase funding.

In addition, local governments have tentatively committed more than \$2.5 million in matching funds for easement acquisition in the coming year.

FARMERS' FERTILIZER WORKS, INC.

365 W. BAINBRIDGE ST.,

ELIZABETHTOWN, PA 17022

**PREMIUM GRANULAR FERTILIZER & LAWN FOOD
LIQUID NITROGEN - LIMESTONE - PESTICIDES**

(TWO FERTILIZER FACILITIES TO SERVE YOU BETTER!)

HOME OFFICE: (717) 367-1211

CHURCHTOWN OFFICE: (215) 286-5337



**AT FARMERS FERTILIZER
YOU GET MORE THAN PRODUCTS & SERVICE
YOU GET WHAT YOU PAY FOR
WE TAKE PRIDE IN OUR REPUTATION**

WE SELL —

Only Premium granular fertilizer with a guaranteed analysis for your crop and soil.

YOU GET —

A quality product and quality service that offers a nitrogen mixture to give fast and slow release of nutrients, with secondary plant nutrients that are vital for plant growth.

Broiler placements rise

HARRISBURG — Placements of broiler chicks in the Commonwealth during the week ending April 19 were 2,314,000, according to the Pennsylvania Crop Reporting Service.

The placements were one percent above both the previous week and the corresponding week a year earlier. Average placements during the past nine weeks were four percent above a year earlier.

Placements in the 21 key poultry producing states were 83,373,000, two percent above the previous week, but about the same as a year earlier. Average placements during the past nine weeks were three percent above a year ago.

Broiler-fryers slaughtered in Pennsylvania under federal inspection during the week ending April 9 totaled 1,959,000, with an average liveweight of 4.21 pounds.



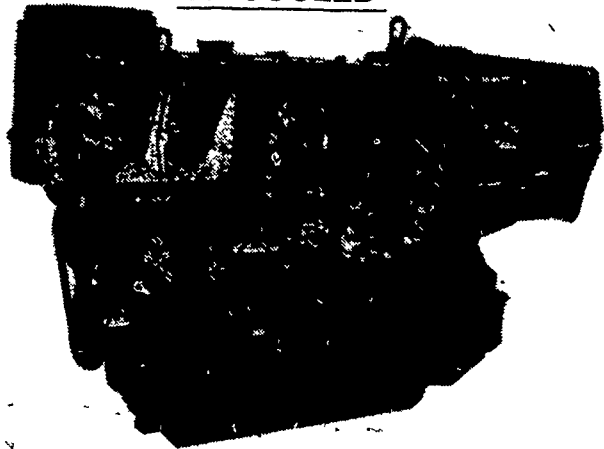
REPOWER With VM DIESEL

Harvesters, Haybines,
Tractors, Cornpickers,
Balers, Hydraulic
Systems, Corn Binders
Choppers

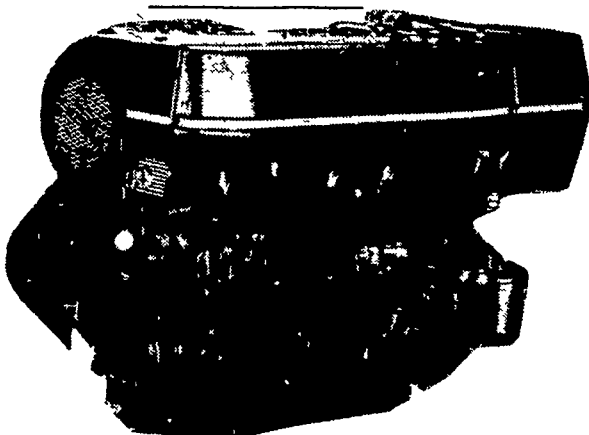


All New HR Series

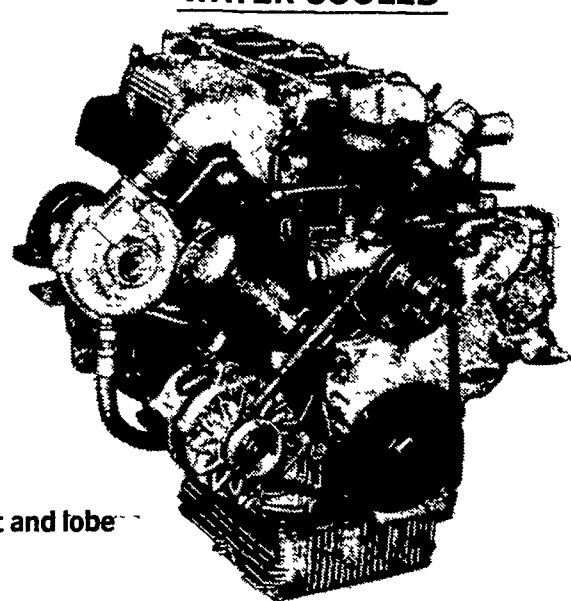
OIL COOLED



AIR COOLED



WATER COOLED



General Features:

- Integrally cast cylinders with inserted and removable wet type cylinder liners
 - Light hypereutectic alloy pistons
 - Extra-resistant steel connecting rods alloyed with special alloy head bearings
 - Surface hardened steel crankshaft
 - Drop-forged, casehardened and tempered steel camshaft
 - Anti-friction cast-iron tappets alloyed
 - Cast-iron tunnel type crankcase
 - Rotary injection pump with mechanical governor
 - Force-feed lubrication with built-in circuit and lobe type pump
 - Diaphragm pump feed
 - Oil and fuel filters with integral type element.
- Special structure and patented engine with consequent increases in performance and easier operation with low weight/output ratio low smoke emissions.
- Engine based on a design "modulus" formula which allows a maximum parts standardization and interchangeability.

**Ask For Horsepower Ranges Of Above
THE "RIGHT FROM THE START" DIESEL ENGINE LINE
FOR FAULTLESS PERFORMANCE**

USED DIESELS

- 1 (2) SR 2 Lister
- 1 (2) SR 3 Lister
- HRS 6 Lister
- 16/2 ListSOLD
- 1 Cylinder Deutz
- DVA 2200 Slanz
- PJ1 Petter

QUEEN ROAD REFRIGERATION

Box 67, Intercourse, PA 17534
Phone: John D. Weaver - 717-768-9006 or 768-7111
or Answering Service - 717-354-4374

**24 HOUR
SERVICE**