

FARM EQUIPMENT

FARM EQUIPMENT

The Time Is Right..
The Price Is Right!!

This Week's New
Equipment Specials...

★ MODEL 101 — 65B FORD
3-14" PLOW ★

- G.P. 14" Bottoms, Rolling Landside, and Spring Trip Beams, 16" Coulters and Cover Boards...

\$1195

★ MODEL 142
FORD 3-16" PLOW ★

- G.P. 16" Bottoms, Gauge Wheel, 30" Hi-pivot Spring Trip beams, 18" Spring Mounted Coulters and Cover Boards...

\$1395

• Stop In or Call •

Sales & Service On:
• Ford • New Idea • New Holland •
WALTER G. COALE, INC.
2849-53 Churchville Rd.
Churchville, Maryland
Ph: (301) 734-7722 or (301) 879-1434



NEW & USED FARM EQUIPMENT

PLOWS

- AC 4x16, 3 pt. mounted
- JD F350 6x16 power reset
- JD F145 5x16 semi-mounted
- JD 4 Trailer plow, trip back, standard
- JD 2x16 3 pt. w/gauge wheel

DISC HARROWS

- JD BWF 13', excellent
- JD AW 32 Blade

PLANTERS

- (2) JD 494 4-row
- (3) JD 494A 4-row
- (2) JD 1240 Plateless
- JD 1250 6-row 30" rows \$2995
- AC 2-row 3 pt.

LOADERS

- JD 45 w/snow bucket for JD 2510 thru 3020 tractors
- JD 45 w/dirt bucket and snow bucket for JD 2 cyl. tractors

HAY AND FORAGE EQUIPMENT

- Ford 3 pt. Flail Mower
- JD 1207 7' Mower Conditioner
- JD 1209 9' Mower Conditioner
- AC 904 Mower Conditioner
- JD 16A Flail Chopper
- JD Table Blower, belt drive
- JD 60H PTO Hopper Blower
- (2) NH 611 Forage Harvesters
- JD 34-38-3800 Forage Harvesters
- IH 110 Forage Box on E-Z Trail tandem running gear like new \$2,995
- IH 440 Baler w/thrower
- NH 69 Baler w/thrower
- JD 24T Baler w/ejector
- (3) New Lamco 16' Bale Bodies
- Sears Running Gear

TRACTORS

- JD 2440 w/145 Loader
- JD 1010 Utility
- JD 1020
- JD 50
- JD 620, Coming In
- JD A w/single front wheel

NEW SPECIALS

JD 550 TRAILER SPRAYER		JD HD 336 12' HARROW	
List Price	Sale Price	List Price	Sale Price
\$3,639	\$3,195	\$1,132	\$850

NEUHAUS'ES INC.

John Deere
R D #2, Exit 31-83
York, Pa 17403
717-428-1954

FARM EQUIPMENT

FARM EQUIPMENT

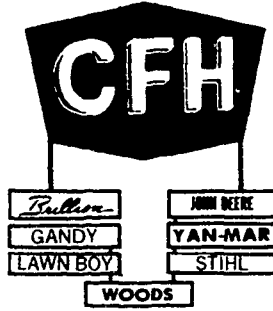
FARM EQUIPMENT

DAIRY EQUIPMENT

- AC 7060, 600 hrs.
- IH 766
- IH 706
- IH 424
- JD 4020
- JD 3010
- Oliver 1850
- Oliver 770
- Ford 601
- Ford 8N
- (2) Used AC 4 row no-till corn planters
- Used AC 2 row no-till corn planter
- (2) Used 10' transport discs
- 3, 4, 5 & 6 bottom used plows
- Used IH 3200A skid loader
- Used NH L775 loader
- Used NH L225 loader
- (5) Used manure spreaders
- (4) Used haybines
- Used 560 Massey round baler, like new
- (3) Used Forage boxes
- AC sprayer
- 4 row Pittsburgh cultivator
- (2) Used Bush Hogs
- (25) New AC & JD tractors in stock
- New Badger forage boxes
- New NI equipment in stock (must be sold)
- SPECIAL NI 456 Round baler, \$6900 (new)

UNIONTOWN FARM EQUIPMENT

Box 1030, Uniontown, PA 15401
412-437-9852



SPRING SPECIALS ON
NEW AND USED EQUIPMENT
USED EQUIPMENT

- JD 4620 Diesel, 2000 hrs., cab, 20.8x38 SGL, 2 hyd., very clean duals available \$18,500.
- JD 4020 Tractor \$9000.
- JD 3010 RU Tractor
- Case 480 Backhoe & loader \$9000.
- International M Tractor \$1200.
- Brillion LGS 192 16' PacisOLD transport \$1150.
- Brillion 10' Packer \$400
- JD BW Disc 12' 10", very clean, blades all good \$1200.
- JD BWA Disc 13' 10" cone blades \$1250.
- MF #12 Baler, no kicker, clean \$1200.
- Lilliston 5' 3 pt. Rotary Mower \$500.
- JD 7000 6-row Corn Planter w/Fert. & Monitor \$7000
- JD 694A Planter, 30" rows, insect, no fert \$1300
- JD 100 IRC 12' Chisel Plow \$1400.
- (2) JD RG4 4R Cultivators, your choice \$650.
- JD RM4 4R Cultivator, like new \$1200.
- AC 16' Spring Tooth, pull type \$450.
- Oliver 15' Spring Tooth \$300
- JD 740 16' Spring Tooth on wheels \$900.
- JD 420 Rotary Hoe \$1850.
- Woods 721 6' Rotary Cutter, 3 pt. \$700.
- NH 510 Manure Spreader \$1100.
- Oliver Plow 3x14 Just Traded
- 10' Disc, no wheels Just Traded

NEW EQUIPMENT

- JD 4420 Dsl. Combine, Hydro, Auto Header Height, loaded \$40,000.
- JD 210 Disc 15' 8" 22" BladesOLD wheels \$5400.
- JD 2800 7' 18" On-Land Plow \$9975.
- JD 2600 5' 16" In Furrow Plow \$5975.
- (2) JD 1610 12' Chisel Plows \$2100.
- JD 420 Rotary Hoe 20' and Transport \$3800.
- JD 430 Rotary Hoe 30' Folding \$6250.
- JD 750 Grinder-Mixer, hay attach., 2 screens \$8350.
- Bush Hog RM30 Rear Blade 6' category 1 \$375.
- JD 78 Rear Blade 6' Demo Unit \$395.
- Brillion 11' Chisel Plow \$2150
- Brillion 13' Chisel Plow \$2475.
- (2) Brillion 16' Packer, end transport \$1975.
- Brillion 18' Packer, end transport \$2200.
- Brillion 20' Packer, end transport \$2300
- Brillion 21' Packer, folding \$4495
- Brillion 11' Shank Sub Soiler \$2495.
- Brillion 4R STine Cultivator \$1400
- Brillion 6R STine Cultivator \$1800

CFH, INC.

East Main Street
Cecilton, Md. 21913
(301) 275-2195
648-5416
775-6608

**SOYBEAN
DRILL**

Crustbuster, 20-8" rows, Used 2 yrs.

\$2500

PH: 301-658-5715

DAIRY EQUIPMENT

For Sale - Acorn barn cleaner, good 2 way motor, & 270' of new stainless cable & Delaval milker units. 717-687-6220.

For Sale - 3 Used Conde Milkers converted to Bou-Matic; 2 used Universal w/Bou-Matic Milkers. 717-626-1151.

For Sale - 600 gal. Vacooler vacuum milk tank by Universal. Portable automatic tank washer used 1 yr. Tecumseh refrigeration unit used 1 yr. DeLaval vacuum pump. 3 Universal pipeline milkers with automatic washer unit. 80 gal. electric hot water heater. 12 ft. Gandy herbicide applicator can also be used for alfalfa seeding. Best offer. Ph. 717-225-3587.

For Sale - Surge Alamo 30 p l u s vacuum pump with vacuum controller. \$175. Berks Co. 215-562-4887.

For Sale - 15 hp. Fulton upright steam boiler, oil fired, used 3 mo. like new, 10x12 Capitol walk-in cooler, 1 ton ice builder for sweet water system, 200 gal./hr. Manton Gavlin homogenizer, asst. lengths 1 1/2" S.S. pipe and fittings, 412-898-2770.

For Sale - Milk-o-meters \$100, each or best offer, DHIA approved, 301-658-5223.

64 Acorn stanchions, 3 Badger corner wheels, 60 new Badger barn cleaner connector, York Co. Delta 717-456-7158.

For Sale - Used Mojonier bulk with tank, 535 gal. square type, best ever made, \$1350 or best offer Contact 717-833-5006 Wyoming Co.

For Sale - 440 gal. Mueller tank with 4 h.p. compressor, \$600, good condition 814-793-2033.

For Sale - Topline dumping station, complete; 4 Surge mini-breaker milkers; Weaverline silage cart. 215-383-6818.

42 Jamesway lever tie stalls, best offer. 2 Bou-Matic milker units, complete, \$175 a piece. 717-656-7305.

For Sale - #73 Delaval milker pump and 3 Surge milkers with straps. 215-932-9516.

For Sale - Pasteurizing equipment in good working condition, includes 220 gal. Sterline Pasteurizer, Cherry Burrell Homogenizer, Cherry Burrell plate cooler, Cherry Burrell 48mm glass filter, Cherry Burrell bottle washer, King Zero ice builder, \$2000 takes all. Also for sale - Lingle 8x16 walk in cooler, excellent condition \$1100, Lingle 8x12 walkin display cooler, excellent condition \$1600. Call 142-677-2589.

For Sale - 3 Used Bou-matic milking units and 1 Westerner (Large rectangular) milk strainer, Box 28, Star #2, Shippensburg, PA 17257.

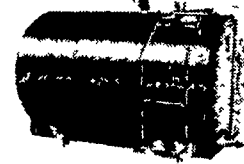
650 gal. Esco bulk tank with 3 h.p. compressor & tank washer, \$1200 or best offer. 717-656-7305.

For Sale - 3 horse Tecumseh cooling compressor R12 - Fren with fan stats, working OK \$250, Amos G. Blank, Rd 1 Box 211, Oxford, PA.

**AUTHORIZED DEALER
GIRTON FARM TANKS**



THE ONLY FARM TANK
MADE IN PENNSYLVANIA



Made For Pipelines
And Automatic
Washing

**SPECIAL PRICE
THRU APRIL
ON ALL SIZES
GIRTON D5
AMBASSADOR
TANKS**



The Lowest Pouring
Height On The
Market Today - 34"!!

★ New Therma•Stor Heat Recovery Systems

★ New and Used Bulk Milk Tanks

SPECIAL THRU APRIL
Call Us About Our Special Price Package on a Therma•Stor Heat Recovery with a New Bulk Tank

— MORE SPECIALS —

- Used 500 gal Dari-Kool tank w/3 H.P. Lehig Compressor w/new motor
- Used 17 cu. ft. Home Freezer w/6" insulation built special for non-electric users
- Used 28 H.P. Deutz Diesel less than 1 yr. old w/clutch, alternators and electric start

— CHECK OUR PRICES! —

24 Hour Bulk Milk Tank Service

**T. S. BURKHOLDER
FARM REFRIGERATION**

RD 2 Ephrata, PA 17522 Box 618 - N Farmersville Rd
(717) 859-1145 — 859-1146