

Public Sales Register

SAT APR 26 - Mid Atlantic Brown Swiss Calf Sale, Robert C Uller Farm, Frederick, MD

SAT, APR 26 - 10:00 A.M. Public Sale of Antiques, PA

German Society Volume Coins, Excellent Glassware and Collectibles, Ford Stake Body Truck, Guns, Oak Furniture, Butcher Equipment, Located near Village of Friedensburg

on Rt 443, approx 1 mile west of Rt. 183 and 9 miles east of Pine Grove in Wayne Twp., Schuylkill Co., PA. Sale ordered by Harry Bowen, Jay Riegel Jr Auctioneer

SAT, APR 26 - Eastern States Shorthorn Invitational Sale Held at the Frederick Fairgrounds, Frederick, MD For Catalogs, Keith Moore, Sale Mgr Box 61, Decatur, Ohio 45115

SAT, APR 26 - 10.00 A.M. Public Sale of Personal Property, Farm Equipment and Tools, Household and Antiques Located approx 1 mile east of Biglerville on Rt 234 at Wertz's Corner, turn south onto Old Carlisle Pike toward Table Rock, or approx. 6 miles north of Gettysburg, PA on the Old Carlisle Pike. Estate of Howard L Guise Larry J Peters Auctioneer

SAT, APR 26 - 10.00 A.M. Public Sale of Antiques, Household and Misc. articles,

Tools, Machinery, Car, Truck and Parts and Real Estate For the late Marshall Peterson at the decedents late residence, located 1 mile north of Honey Grove, Juniata Co., along 850. J. Speer and F Harry Auctioneers

SAT. APR. 26 - 1 00 P.M. 1980 Spring Feeder Cattle and Calf Sale. Held at Aberdeen Sales Co on Rt. 222 in Churchville, Harford Co., MD.

SAT. APR 26 - 9.00 A.M. Public Sale of Machinery, Tools and Antiques Sale for Claude Douglas Estate, Duke Center, PA, Rt. 346, Eldred, PA 12 miles from Olean, NY, 12 miles from Bradford, PA. Si Pepperman Auctioneer

SAT APR 26 - 10.30 A.M. Public Sale of Equipment and Cattle. Located 8 miles from Corning, NY Off Rt. 17 west at exit 42 and 25 from Lawrenceville, Toga Co., PA Leonard Landon Owner Rumsey Sales, Bath, NY

GAP AUCTION

FRIDAY EVE., MAY 2, 1980
5:30 P.M.

Located off Route 41 - Lancaster Avenue opposite Turkey Hill Minit Market - Cross RR Bridge

ANTIQUES AND HOUSEHOLD GOODS
SOLD AT EVERY AUCTION.

CONSIGNMENTS ON MONDAYS
FROM 8:00 A.M. to 7:00 P.M.
OTHER DAYS BY APPOINTMENT

Call us for pick-up service

IRA STOLTZFUS & SON, Auctioneers

442-4936 or 442-8254

CONDUCTORS ALL TYPES PUBLIC SALES

THE ANNUAL TEL-HAI BENEFIT SALE

MAY 3, 1980
9:30 A.M.

At Twin Slope Farmers Market

Located just West of Morgantown, PA at the turnpike Exit 22 and the junction of Route 10 and 23.

ITEMS MAY BE BROUGHT TO
SALE SITE MORNING OF SALE
OR CONTRACT:

ELMER HERTZLER, Elverson Pa
215 286 5343
WILMER KRAYBILL, Elverson, Pa
215 286 9576
MRS MAST STOLTZFUS, Atglen Pa
215 593 6216

COME ONE - COME ALL



YOU WON'T WANT TO MISS THE ANNUAL
BENEFIT SALE FOR TEL-HAI CAMP & REST HOME



SALE BEGINS AT 9:30 A.M. - QUILTS AT 1:00 P.M.

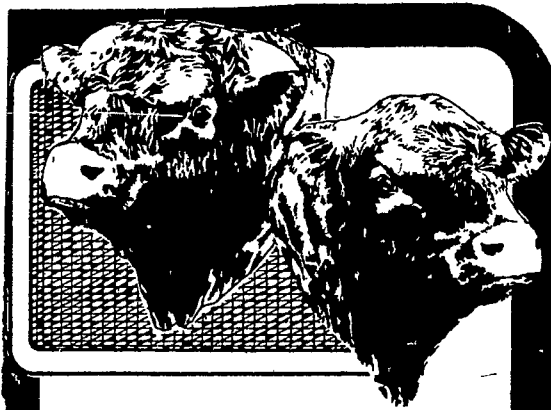
Auctioneers:
Hornings & Kurtz

Bring Your Own Chairs

PENNSYLVANIA SHORTHORN AND POLLED SHORTHORN BREEDERS' ASSOCIATION SPRING SHOW AND SALE

SATURDAY, MAY 3, 1980

MERCER 4-H PARK, MERCER, PENNSYLVANIA



BULLS HEIFERS COW AND CALF PAIRS
SHOW: 3:00 P.M. GREG MC KEAN, JUDGE
SALE: 7:30 P.M.

CHARLES J. BEHM,
AUCTIONEER

For Catalogs please contact:

PENNSYLVANIA SHORTHORN BREEDERS'
ASSOCIATION

R.D. #2, Box 246, Volant, PA 16156
Phone (412) 533-2913

Frank B. Allen

COMPLETE DISPERSAL

SATURDAY, MAY 3

11:00 A.M.

Doolittle Hill. Turn off Route 6 between
Laceyville and Meshoppen at Black Walnut and
go 3 miles. Susq. County. Follow Arrows.
51 HIGH GRADE HOLSTEINS 51

28 mature cows, 9 bred heifers, 12 open and started
heifers, a servicing bull, one started bull.

This is a Fall dairy that is almost entirely due to
freshen August to October. They are big, have con-
dition, showing type, production and youth throughout.
These young cattle are well grown, dehorned with lots
of type. Pregnancy examined and interstate charts.
The money making kind.

MACHINERY

IH 886 Diesel with full cab, radio, all extras, bought
new in Feb. just 53 hours; IH 966 Diesel, extras, latest
model just 724 hours (looks new) w/800 hours. All are 3
pt. and wide front. IH 2250 front loader (mounted on
674); IH 710 auto reset 4B plow; IH 720 chopper w/2-
row and pickup heads, electric controls (used very
little); IH 37 PTO baler w/10 thrower; Grove bale rack
and wagon; IH 35 Hydraulic drive rake; Kuhl tedder;
JD 9' haybine (about new); 2 sets JD hydraulic 12'
harrow; JD #216 unloading box and JD 12 ton wagon
(new condition); Fox short blower; NH Super 23
blower, Fiberglass sprayer; Lely 3 pt. spreader, 3 pt.
crane; JD 12' cut-away transport disc; Brillion 12'
roller; IH 27 mower; DB wagon; IH 3B hyd. trailer
plow; Arps 3 pt. snow blower; Arps Hyd. angle HD
back blade; new pair IH fenders, Mineral feeder,
woven wire, etc., etc.

This 136 acre farm is for sale. All set up with tank,
silo unloaders, barn cleaner, pipeline, mow conveyor,
vacuum, etc. It is in a very good state of cultivation,
very good milk market, location, house and well ready
to keep producing as it has for Mr. Allen. Contact Allen
at 717-869-1580 for terms and inspection.

NOTE: This is a super set of machinery and cattle. If
you're considering buying any of these items listed it
may pay you to wait for this auction. Everything stored
inside, has been greased and properly maintained. Mr.
Allen's decision to retire from farming reason for sale.
Lots more small items, that are not listed, to sell.

Terms: Cash or approved check the same day.

OWNER,
FRANK B. ALLEN

Jim Adriance, Auctioneer
Montrose, Pa.
717-278-1574

PUBLIC AUCTION

Compulsive Collector leaving Maryland
Selling at Absolute Auction at Rudnick Sales
Barn, Galena, Md.

SATURDAY, MAY 3, 1980

At 11:00 A.M.

ANTIQUES & FURNITURE to include:

Oak sideboard, Amoire, Beds, tables, Chairs, and
Oak Framed Mirror...Victorian Parlor Set & Vic-
torian table, Antique yoke, Walnut - Cherry - Iron and
Brass Beds, Ant. Cherry Partners Desk, Jelly Cup-
board, Bakers table, 2 pie safes, Sheraton Loveseat,
Dining Room set, Avon and Beam bottles, Dolls,
Crocks, China, Mantle Clock, Gateleg table, Frames,
hand crocheted spreads, Oil lamps, hose winder, 2
Hanging Lamps, Depression Glass; pot belly stove,
Ant round wash stand, treadle sewing machine. . .
Antique slot machine, carnival wheel, pinball console,
Cigarette & candy vending machine, Wicker pieces,
Wrought Iron Pieces, 6 Walnut Chairs, 2 Bedroom sets,
lots of glassware, Trunks, etc. etc...

ANTIQUA GUN COLLECTION:

(3) Winchester Rifle & Carbines (1866 to 1892) . . .
1887 Marling Octagon Barrel Rifle, 1857 Enfield Per-
sian Rifle, 1862 Springfield (Civil War) Musket, Big
Game Rifle, Tiger Maple stock - brass trim 12 Ga.
double barrel shotgun, 1878 Parker Bros. 12 ga. Double
barrel shotgun (Lefauchaux) Pin-fire pistol . . . Plus
many other items.

Collection Of:

MR. & MRS. ROBERT ANDERS
of Lanham, Md.

to be sold at Galena, Md
Inspection Morning of sale.

PUBLIC AUCTION

VALUABLE REAL ESTATE
35 ACRES FARMLAND

MONDAY, APRIL 28

1:00 P.M.

Located just 3 miles N. East of Elizabethtown,
Lanc. Co. Pa. Along Herford Road just off the
Elizabethtown Road at Rissers Mennonite
Church. Mt. Joy Township. Lanc. Co. Penna.

Real Estate consisted of 35 acres - farmland no
buildings - come take a look at this one if you have
expansion in mind, many possibilities, build your own,
pick your spot to build, small stream of water, also a
small part in woodland. New owner may start crops
immediately.

Please write or call auctioneer for brochure which
includes perimeter survey.

Sale by,

WM. M. HESS & CARL ZEISET

E.M. Murry Associates, Auctioneers
Blakinger Grove & Chillis P.C., Attys.

E.M. Murry Associates

BOX 383 Lititz RD6
PA 17543
Elmer Murry 626-5244 - 626-2636
Richard Murry 626-8175 - 949-2280
Ken Miller 665-2073
Professional Auctioneers,
Appraisers, and Advisors
Since 1953

Good's Auction

111 North Maple Ave.
Leola, PA

Hay, Straw & Grain Sales

Every Wednesday
12:00 Noon

Farm Machinery

First and Third Wednesday
January thru November
starting at 9:00

With 6 Auctioneers

Tools and Hardware
Lawn & Garden Equipment

12:00 Noon

Farm Machinery - 12:30

No out of state checks
No household Goods, no clothing.
No poultry Equipment or scrap tin.

DAVID H.
GOOD & SONS

RD 1 Leola, PA 17540
717-656-9558