

Pennay urges responsibility in land preservation

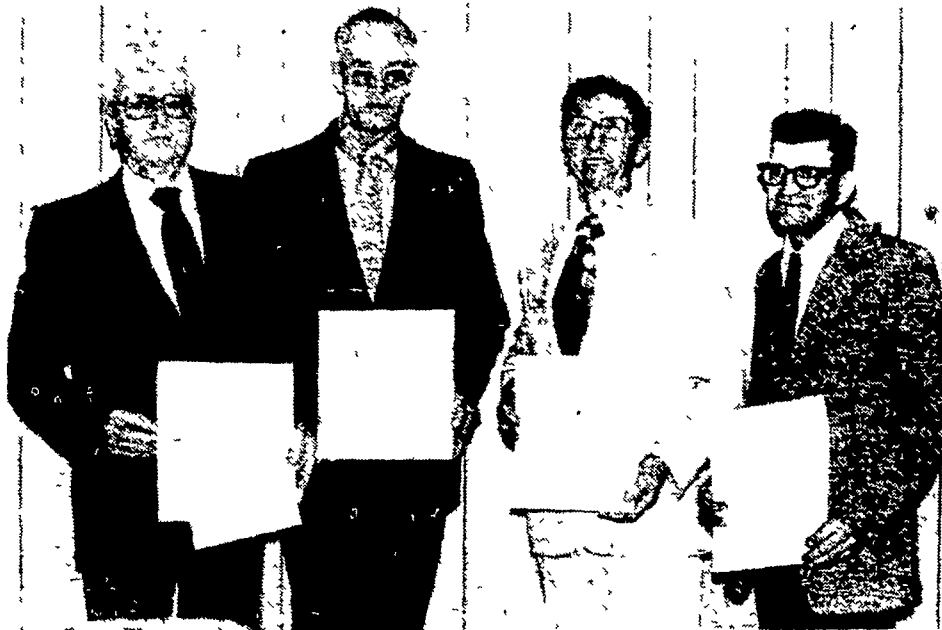
BY RUTH ANN BENEDICT
Staff Correspondent
KAUFFMAN STATION —
Nearly 250 area farmers
attended the 16th Annual
Agricultural Stabilization
and Conservation Service

Banquet, sponsored by the
Franklin County ASC
Committee and held at the
Kauffman Station Com-
munity Center.
Guest speaker for the
dinner affair was Richard A.

Pennay, state program
specialist from Harrisburg.
Pennay noted the decrease
in the number of farmers.
"In 1950 there were 5.6
million farmers - now there
are 2 million. The total U.S.



Richard A. Pennay.



Four Franklin County ASCS committeemen recently received service awards. They are from left: Clarence C. Allison, Chambersburg, 10 years; J. Harold Kershner, Greencastle, 20 years; Walter W. Grove, Shippensburg, 10 years; and Lyle Umbrell, Doylesburg, 10 years.

population has changed from
25 percent being farmers in
1925 to a current 4 percent
being farmers.

"This 4 percent population
of farmers has a tremendous
responsibility in looking
after the other 96 percent of
our total population.
Therefore we must manage
and preserve our land for
our future generations,"
urged Pennay.

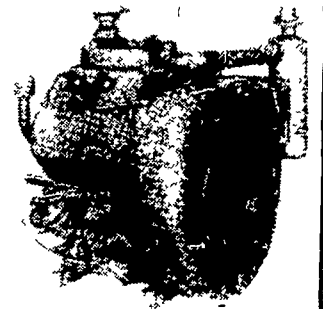
"Every generation must
face responsibilities and
keep on going so we have a
good base to start from for
the next generation," he
stated.

He said "our city cousins
must also realize the
problems that we the farmer
face and they must help.
These large problems
facing the farmer today
every one of us has that
responsibility to support
rural America.
When trying to successfully
manage land for now and in
the future." (Turn to Page D20)

CAN'T AFFORD A NEW ENGINE? Let Us Overhaul Your Old Engine!



WISCONSIN
ENGINES

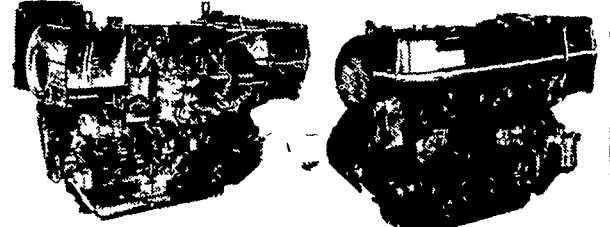


V/465D
VH4D
AENL
NEW & USED

Authorized
Dealer
Of



ADAPTABLE TO MOST APPLICATIONS



From 13HP to 200HP
OIL COOLED WATER COOLED AIR COOLED

EASY

WAY TO
MAKE
HAY

- Mows and conditions in 1 trip
- Non stop No plugging
- Saves rain soaked hay crop
- Handle any hay crop better

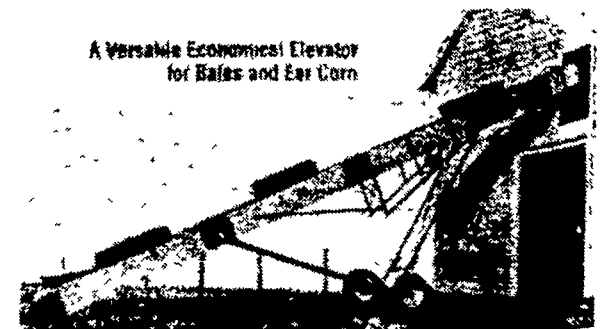


M-C
Rotary Scythe

7 FT. & 9 FT.
IN STOCK

ZIMMERMAN PORTABLE ELEVATORS
Will Carry Your Corn And Hay

A Versatile Economical Elevator
for Bales and Ear Corn



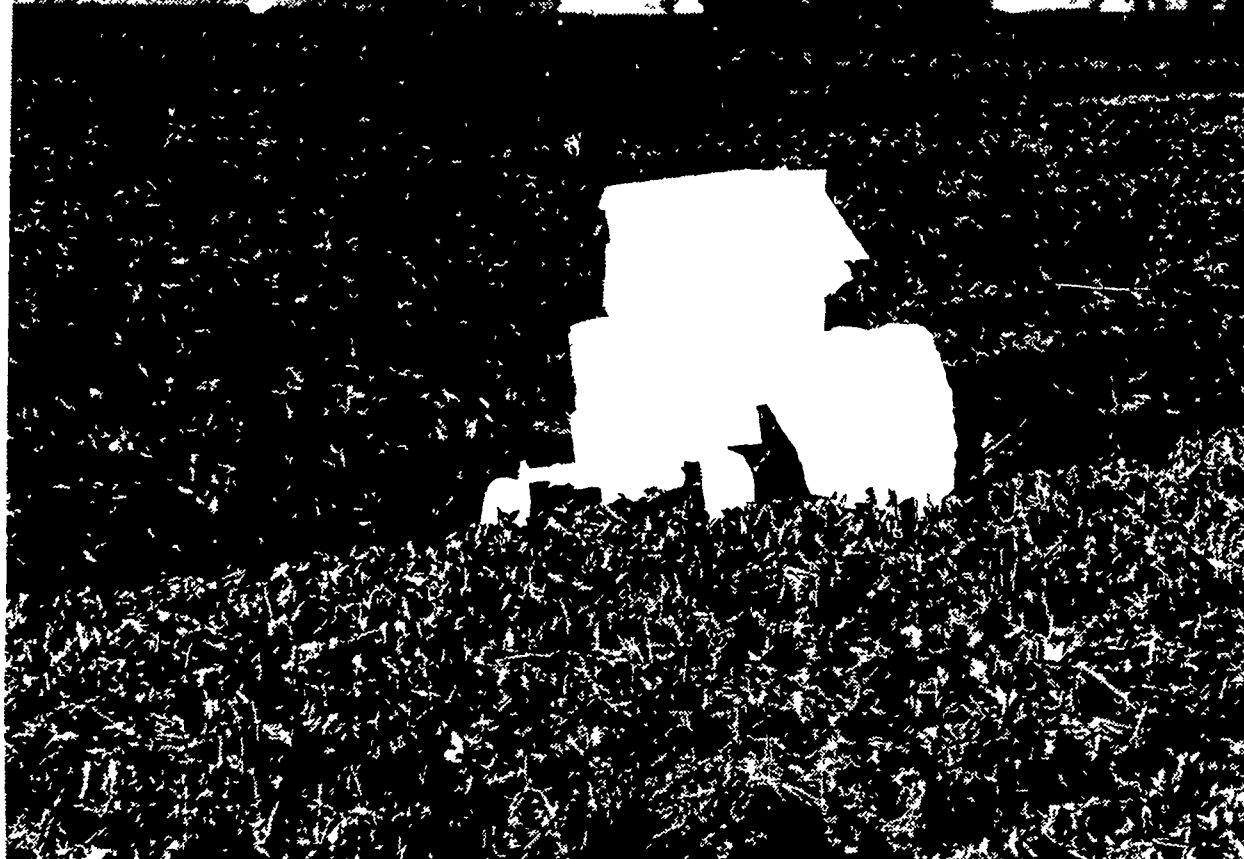
28 ft. ... \$950 32 ft. ... \$1075
36 Ft. and 40 Ft. Also Available

SALES & SERVICE

MILLER'S REPAIR

1 Mile North of Bird-in-Hand
8 Miles East of Lancaster
RD1, Bird-in-Hand, PA PH: 717-656-9013

Farm Credit can help you fill your equipment gap.



At Farm Credit, we can help you get that new tractor. Or planter. Or tiller. Or spreader. Or whatever it takes to bring your equipment up to strength. And we find ways to make your Farm Credit loan especially attractive.

WE'LL HELP WITH LOW RATES.

Look around. Check prevailing interest rates. Then check in at your Farm Credit office. If you shop for your equipment loan as carefully as you shop for your equipment, we think you'll see the advantage of a Farm Credit loan.

YOUR PAYMENTS WILL FIT YOUR INCOME PATTERN.

At Farm Credit, we always try to schedule your payments around your peak income periods. So you pay us when your crops or livestock pay you.

LET'S TALK... YOUR PLACE OR OURS.

You'll always get prompt attention at your Farm Credit office. And if you're too busy to make the trip in, give us a call. We'll come to you. Most of us were brought up on farms, and we know how tough it is to break loose sometimes. It all comes down to this. Whether you need money for equipment or any other farm-related need, chances are, Farm Credit can help. Drop by or give us a call. You'll find that we're your kind of people.

FOR MORE INFORMATION, CONTACT
YOUR LOCAL COUNTY OFFICE.

