

Bipartisan group asks USDA to increase soybean support

WASHINGTON, D.C. — Sixteen members of the Senate Committee on Agriculture, Nutrition, and Forestry, including Chairman Herman E. Talmadge, Wednesday called on Agriculture Secretary Bob Bergland to increase the price support loan rate for soybeans from \$4.50 to \$5.02 per bushel.

The bi-partisan group also asked the secretary to waive a requirement that producers must have planted within the normal crop acreage of their respective farms last year in order to be eligible for price support on their 1979 soybeans.

The Secretary has

authority under existing law to take both of the requested actions. The senators' request has been endorsed by the American Soybean Association.

The proposed \$5.02 loan rate is equivalent to 65 percent of the national average cost of producing a bushel of soybeans.

The Senate Agriculture committee members urged Bergland to take the recommended actions because of the sharp drop in soybean prices and the prospects of another bumper crop this year.

"Since many farmers are faced with a severe shortage of cash and the outlook for higher soybean prices is

pessimistic, it only makes good sense to increase the soybean loan rate and allow all of the 1979 crop of soybeans to be eligible for the soybean loan program — disregarding the normal crop acreage requirement," the senators said in a joint letter to Bergland.

Noting that many soybean producers have held their 1979 crop in hopes of higher prices, the senators' letter said:

"In the absence of action by you, many farmers will have no choice other than to sell their soybeans at a significant financial loss. This would weaken our soybean industry — an industry that last year con-

tributed nearly \$7 billion to the U.S. balance of payments and ranked only second to aircraft in total export value."

In addition to Talmadge, signers of the letter include: David L. Boren (D-Ok.); Rudy Boschwitz (R-Minn.); Thad Cochran (R-Miss.); Bob Dole (R-Kan.); Walter D. Huddleston (D-Ky.); Robert W. Jepsen (R-Iowa); Patrick J. Leahy (D-Vt.); Richard G. Lugar (R-Ind.); George McGovern (D-S. Dak.); John Melcher (D-Mont.); David H. Pryor (D-Ark.); Donald W. Stewart (D-Ala.); Richard B. Stone (D-Fla.); Milton R. Young (R-N.D.); Edward Zorinsky (D-Neb.).

Berks Co. DHIA

(Continued from Page D9)

Bendy Brook Farm	H	6-5	302	21,885	738
Lorena	H				
E Daniel Leatherman	H	6-11	305	23,370	774
Apolly	H				
Glen High	H	4-9	305	18,599	744
#16	H				
Retland Farm	H	6-5	286	18,940	772
#25	H				
Roy Hoppes	H	6-4	305	19,831	729
Libby	H				
David Y Knauer	H	5-8	305	16,339	656
Maria	H				
Philip & Tom Werley Jr	H	6-2	295	16,159	668
#39	H				
#86	H	5-5	305	18,129	715
Robert E. Kopfer	H	5-4	305	23,861	807
#16	H				
#63	H	4-5	305	19,932	675
Elam G Hoover	H	3-4	305	17,564	732
#49	H				
Adin Oberholtzer	H	5-8	305	18,277	728
Peg	H				
Jumbo	H	5-7	305	21,447	837

Keith E Hertzog	H	3-11	305	17,865	650
Venus	H				
Elmer Zeiset	H	5-5	305	17,242	677
#9	H				
Heindel Farms, Inc	H	2-2	305	16,638	652
Carrie	H				
Harvy M Weaver	H	6-1	305	19,698	777
#33	H				
Harvey C Krill Jr	H	4-4	305	19,820	760
Jacklyn	H				
Donald Burkholder	H	4-4	305	20,093	688
#51	H				
#30	H	5-6	305	23,373	777
Steven F Wagner	H	4-0	305	18,411	689
#70	H				
Charles Zimmerman	H	7-6	305	17,890	654
Adela	H	5-8	303	19,735	836
Deloris	H	5-4	305	21,145	680
Mighty	H	5-9	279	17,555	673
Delora	H				
Clarence C Sattazahn	H	9-3	305	26,696	964
84Marg	H				
Yost Brothers	H	6-9	305	23,208	756
#166	H	3-10	305	23,981	851
#157	H	3-4	305	19,879	705
#152	H	3-1	305	19,105	662
#102	H	2-3	305	16,996	683
#69	H				

THE NEW ANSWER?

Use

Sila-Prime



A PROBIOTIC FERMENTATION AID

The Natural Way To Improve Haylage/Silage

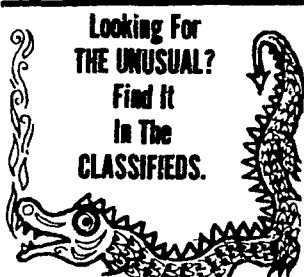
- ★ ALFALFA
- ★ CEREAL GRAINS
- ★ CLOVER
- ★ CORN SILAGE
- ★ FORAGE SORGHUM
- ★ GRASS
- ★ BALED HAY
- ★ HIGH MOISTURE CORN

StarLabs

- ★ CATTLE & HOG MINERALS
- ★ CUSTOM CANVASS WORK

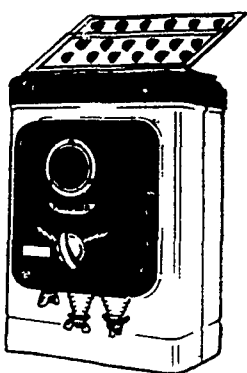
AARON S. GROFF & SON

FARM & DAIRY STORE
RD 3, Ephrata, PA 17522 (Hinkletown)
Phone (717) 354-4631
Store Hours: 7 A.M. to 9 P.M.
Closed Tues., Wed. & Sat. at 5:30 P.M.



SOLAR-PAK

By **PARMAK**
America's first
SOLAR POWERED
Electric Fencer



PARMAK
TRADE MARK OF QUALITY SINCE 1971

NEW SOLAR-PAK
\$144.95

IF YOUR LOCAL DEALER DOES NOT HAVE IT, CONTACT:

PEQUEA BATTERIES
RONKS, PA 17572
★ Authorized Distributor & Warranty Station

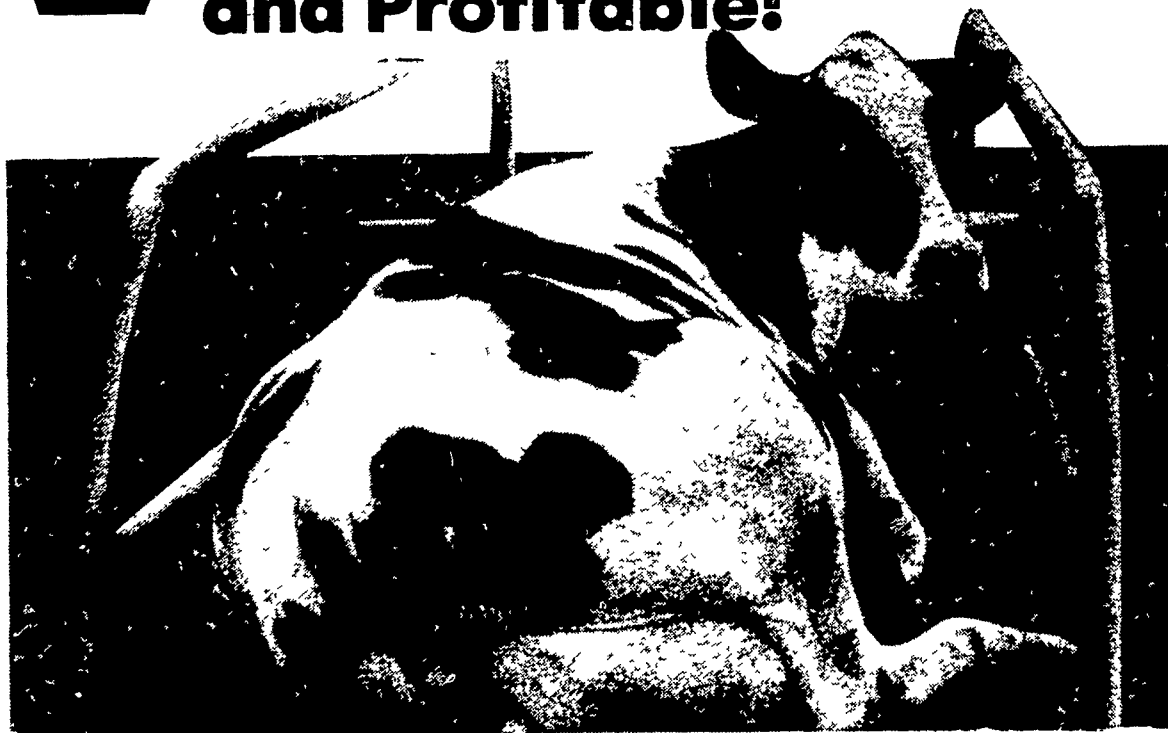


BIG V COW MATS

BY KRAIBURG

"MORE UDDER ON THE RUBBER"

Keep Cows Happy, Resting, and Profitable!



SIZES IN STOCK FOR IMMEDIATE DELIVERY

36x60	43x65
42x60	43x69
39x65	48x60
39x69	48x66
42x72	48x72

DIRECT FACTORY DISTRIBUTOR — QUANTITY DISCOUNTS AVAILABLE

"Sure-grip" textured tread surface. Specially developed tread surface gives solid footing, protection against udder injuries, abrasions and sore hocks.

Grooveless surface provides easy cleaning. Pebbled surface has no grooves to retain urine or manure, washes easily, dries quickly with minimum effort.

10 Year Warranty Program.

Excellent heat loss resistance. Keeps cows' body heat from dissipating. Thermal insulation action rejects cold and dampness from concrete underflooring.

Saves bedding materials. Provides safe, sanitary lying comfort for cows.

VANCO SALES CO.

RD4, Box 300
Carlisle, PA 17013
Phone - 717-776-3494

Please send free sample & installation instructions

Name _____
Address _____
Phone _____