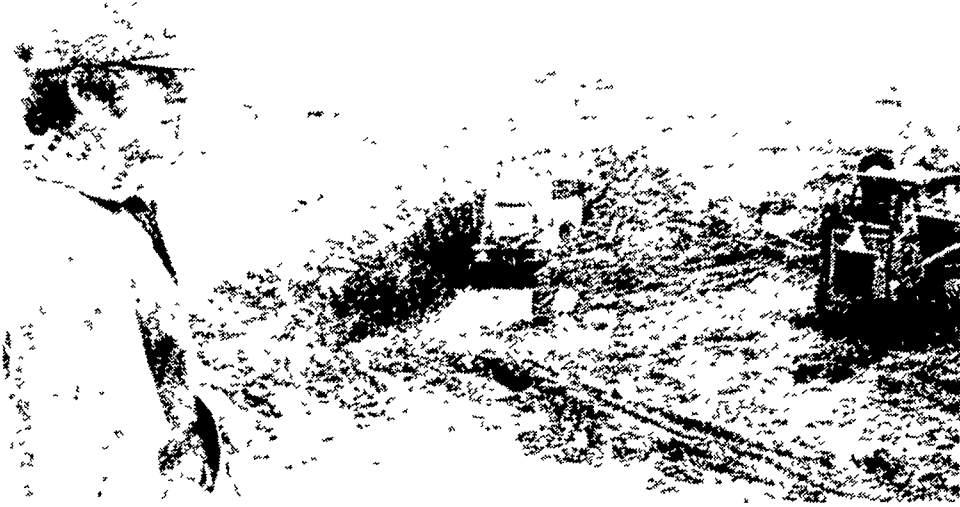


900-hog finishing operation planned



Mervin Sauder, R6 Lititz, looks over site of new finishing operation as concrete is poured in excavated pit area.

LITITZ — Construction began this week on a 900-hog finishing unit on the Mervin Sauder farm along Temperance Hill Road, R6 Lititz.

The Nebraska modified open front unit will measure 200 feet long and 28 feet wide and have a capacity for 800 to 900 hogs, according to Sauder.

"I decided against remodeling an older existing barn," Sauder said.

He is presently finishing about 350 head in various locations, some on contract. The finishing will be consolidated in the new facility

when it is completed in about two months.

Feeder pigs will be supplied from the 480-sow total confinement farrowing operation of L. and L. Pig Producers, Lebanon County.

Sauder is in partnership in the L. and L. Operation with three other farmers in the Lititz-Manheim area, including Ken Witmer, Jim Kettering and Marlin Cassel.

Feeder pigs are divided among the partners and replacement gilts are provided from the finishing operations.

The Sauder finishing unit

will be erected by Craft-Bilt Construction, Inc., R2 Manheim.

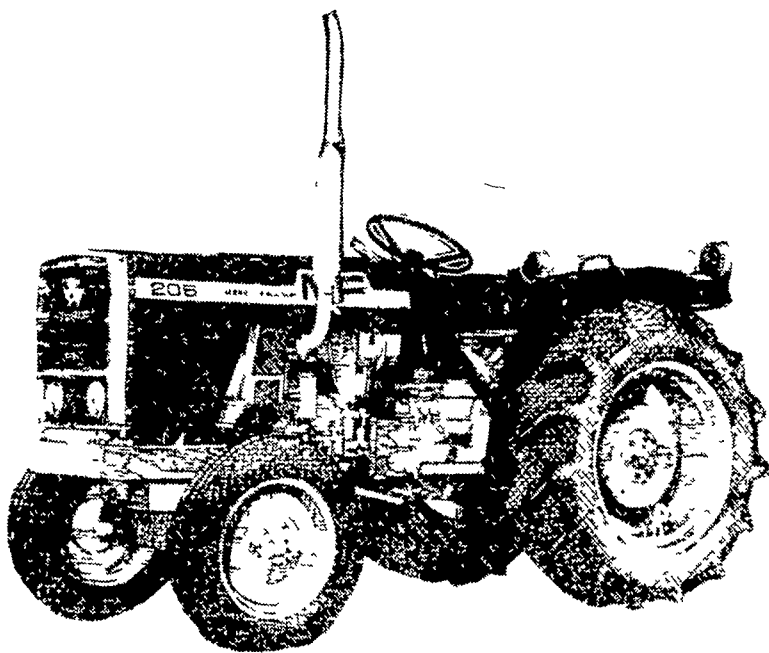
Plans call for the feeding of high moisture corn and a new storage silo will be erected, too. A large 60 by 90-foot machinery shed was built on the Sauder farm last summer.

Sauder farms about 200 acres in three locations in the Temperance Hill and Sumac Road area, east of Lititz. Growing largely corn and alfalfa, he milks 40 head of Holsteins and also feeds steers.—da

20 MF COMPACT TRACTORS to be given away

ENTER TODAY! NO PURCHASE NECESSARY

SPRING TRY-OUT SWEEPSTAKES



OFFICIAL RULES

No purchase required, here's all you do

1 On an official entry form, hand print your name, address, zip code and telephone number. Then deposit your entry in the box provided at your participating Massey-Ferguson dealer. Entries must be deposited by May 2, 1980 and received at sweepstakes headquarters by May 16, 1980. Mechanically reproduced forms will not be accepted.

2 Sweepstakes open to residents of the U.S. 18 years of age and older. Void in Howard County, Maryland and where prohibited by law. Residents of Ohio and Utah may mail their entry to their participating Massey-Ferguson dealer.

3 Winners will be selected in random drawings conducted by MacDonald Creative Marketing, whose decisions are final. One prize to a family and no substitutions. Taxes are the responsibility of winners. Winners will be notified by mail and winner's name and likeness may be used for publicity purposes. Odds of winning are determined by the total number of entries received. All prizes are guaranteed to be awarded. Delivery of all prizes to be made at the dealership of entry.

4 Employees and their families of Massey-Ferguson, their participating Massey-Ferguson dealers and their agencies (advertising, sweepstakes, publishers and printers) are not eligible. All federal, state and local laws and regulations apply.

A list of winners may be obtained by sending a stamped, self-addressed envelope to

WINNERS
c/o Massey-Ferguson
P O Box 1302
Dayton, Ohio 45401

OFFICIAL SWEEPSTAKES ENTRY

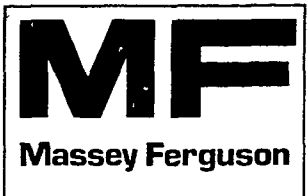
Please hand print. Then take this completed form to your participating Massey-Ferguson dealer.

Deadline for entry is May 2, 1980.

Mr. Dealer: Here's my entry in Massey-Ferguson's "SPRING TRY-OUT" SWEEPSTAKES.

NAME _____
ADDRESS _____
TOWN _____ STATE _____ ZIP CODE _____
TELEPHONE _____

YOUR



DEALERS:

ACKLEY'S INC.
Deerfield, NJ 08313
PH: 609-451-8376

N.H. FLICKER & SONS INC.
Rt. 222, Box 68
Maxatawny, PA 19538
PH: 215-683-7252

R. FRANZEN CORPORATION
RD 2
Woodstown, NJ 08098
PH: 609-769-2300

S. G. LEWIS & SON, INC.
RD 2 Box 66
West Grove, PA 19390
PH: 215-869-2214

M. M. WEAVER & SONS, INC.
N. Groffdale Rd.
Leola, PA 17540
PH: 717-656-2321

RHODES EQUIPMENT CO., INC.
1085 Industrial Blvd.
Southampton, PA 18966
PH: 215-677-6000