

Carroll County, MDA to stamp out Johnsongrass

WESTMINSTER, Md. — Maryland Secretary of Agriculture, Wayne A. Cawley, Jr. says he is confident his meeting with the Carroll County Weed Control Board has resolved many of the problems hampering an effective Johnsongrass Control Program for the county.

Johnsongrass is the only weed officially declared "noxious" in Maryland and

poses a serious threat to agricultural crop production because of its rapid spread when left unchecked. Maryland law provides that MDA may assist counties in a cooperative effort to prevent that spread.

For Secretary Cawley, the Thursday meeting was the first with the Carroll County Weed Control Board since its appointment by the Board of County Commissioners last

January. The Board is chaired by Russell Brehm of Westminster and has seven members, including ex-officio member Robert L. Jones, the county extension agent.

One apparent reason for a lack of effective Johnsongrass control enforcement in Carroll County has been a long standing vacancy in that program's supervisory capacity. A

major result of the joint Westminster meeting was determination by the Weed Control Board to fill that current vacancy. Applications for the job close today.

Information relating to that position may be obtained by telephoning the Carroll County Extension Office at 301/848-4611.

Secretary Cawley says, "MDA fully responsibility to

eradicate Johnsongrass wherever possible. The law calls for court action if necessary, and when non-compliance with the Johnsongrass Control Program in Maryland requires that drastic step we will take it.

"I am very optimistic the Johnsongrass Control

Program is going to move forward in Carroll County. I wholeheartedly endorse the concept of the Johnsongrass Control Law, MDA will steadfastly enforce it and with the active support of the County Weed Control Board, Carroll County farmers and consumers both will benefit from the results."

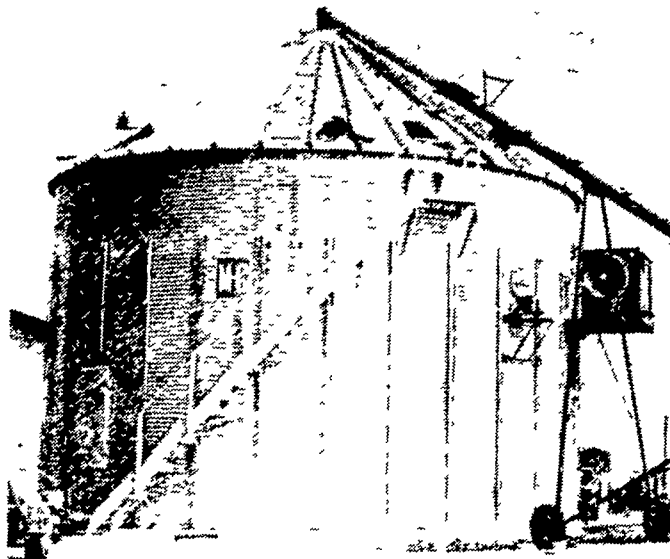
GREAT GRAIN HANDLING SYSTEMS BEGIN WITH GOOD PLANNING AND M-C DRYERS

Now Available!

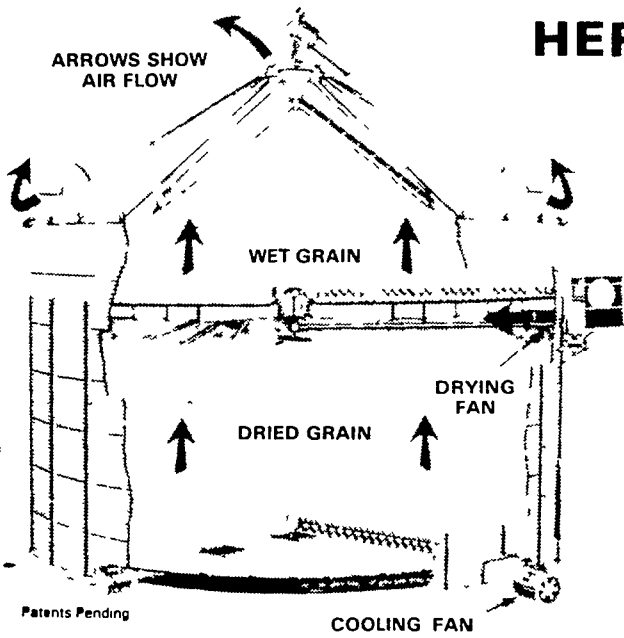
M-C DRYBINE

The ENERGY SAVING
IN-BIN DRYING SYSTEM

The new Mathews Continuous In-Bin Dryer is a combination storage drying and cooling bin designed to save you money. It is efficient, fast, easy to manage and costs less to operate. The drying process is fast, while the cooling process is slow, eliminating stress cracks and damage caused by fast cooling. There is nothing else like it on the market. The Mathews design requires no wet holding bin or separate bin for cooling.



- Saves energy for profitable operations
- Eliminates the most common problems found in other in-bin dryers
- Proven high capacity results (357 bushels per hour)
- Low per bushel costs



HERE'S HOW IT WORKS...

As wet grain enters the top of the bin, it flows into the upper drying chamber as harvested, with no need for a wet holding bin. This upper chamber holds up to 4 feet of wet grain (2250 bushels)

Every seven minutes, a continuous flow auger makes a complete revolution around the upper drying floor, drawing the dried grain into the lower cooling area

Hot air is introduced under the upper floor to dry the wet grain and to heat the surface of the grain that is distributed into the lower cooling chamber. The air that is used for cooling the grain picks up heat during the cooling process. This heated air is then used again in the drying process, saving on fuel costs

When not being used for drying, the bin will store 8500 bushels of grain

BIN DRYER TEST FOR FALL OF 1979

Ambient Temperature	43°
Plenum Temperature	190°
Static Pressure	1.5
Average Fuel Costs	51.9¢/gallon
Gallons LP Gas ('79)	1,420
Bushels/gallon	10.3
Cost/bushel05
Bushels Dried ('79)	14,629

Moisture (Average Incoming)	28.3
Moisture of Dry Corn	13.1
Points Removed	15.3
Bushels/hour	356.8
Total Drying Time	40 Hours 57 Minutes
Unload (Tapered) Auger Time On	23 Hours 35 Minutes

THIS SYSTEM WILL FIT ANY 30 FT. x 7 RING BIN



H
HERSHEY EQUIPMENT
COMPANY, INC.

SYCAMORE IND. PARK
255 PLANE TREE DRIVE
LANCASTER, PA. 17603
(717) 393-5807
Route 30 West at
the Centerville Exit

Designers of Quality Systems for Poultry, Swine and Grain Handling.

CCC offers to buy wheat at stated prices

WASHINGTON, D.C. — Beginning last Tuesday, the Commodity Credit Corporation will offer to buy wheat at declared prices, Secretary of Agriculture Bob Bergland said today. Purchases will be made on a first-come, first served basis, he said.

CCC has been buying corn and wheat by issuing invitations to sellers asking them to submit bids offering their grain for sale.

County offices of the U.S. Department of Agriculture's Agricultural Stabilization and Conservation Service will be notified of the local purchase price. Sellers may then offer a specified quantity of wheat at the posted county price thru the county ASCS offices. A farmer must have title to and possession of the grain at the time an offer is submitted.

For farm-stored grain, in the event CCC is not able to accept delivery within 30 days after acceptance of the offer, CCC will pay the farmer storage at the rate of 0685 cents per bushel per

day beginning on the 31st day after acceptance until delivery of the grain is accepted by CCC.

No storage will be earned by the farmer if delivery is delayed by the farmer.

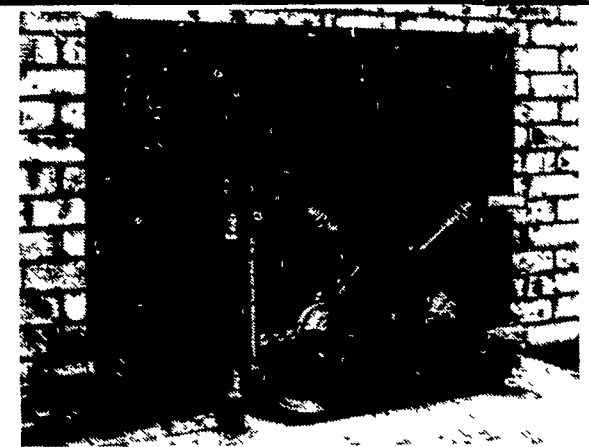
Payment for warehouse-stored grain will be made when the farmer delivers acceptable warehouse receipts to the country office.

Payments for farm-stored grain will be made when the producer delivers warehouse receipts for the grain or a completed commodity delivery notice showing quantity and quality delivered to the county ASCS office.

If requested by the producer, advance payment of up to 80 percent of the purchase price (bushels offered times the basic county purchase price) will be made after the offer is accepted.

Bergland said wheat purchases will continue until a quantity equal to that suspended from shipment to the Soviet Union has been removed from the market.

ALASKA KODIAK WOODBURNERS



FIREPLACE INSERT

- Fits into your existing fireplace complete with all parts, including blower and instructions for easy installation
- Specifications (Large)
Burning time 10 to 12 hours Heating capacity with blower, 2,500 Sq ft, without blower 2,000 Sq ft
Fireplace minimum opening 23 1/2" high x 32 1/4" wide x 15 1/4" deep

Effective Now Factory Authorized
Super Sale of 1980

Closed April 25 thru 30
MANY OTHER MODELS AVAILABLE



CHESTER B. NOLT

30 S. Hershey Ave., Bareville
Leola, Pa. 17540
717-656-6898

STORE HOURS:

Closed Mon & Tues, Open Wed, Thurs, Fri 10 to 8,
Sat 10 to 4 Other hours by appointment