



**LIQUID PLANT FOOD**  
 9-18-9 Starter  
 10-7-7 Foliar Feed

**ALPINE**

- Balanced formula of trace elements
- Immediate availability of nutrients
- A neutral chlorine free product will not rust or corrode equipment

April Base Price  
 \$2.65 Delivered  
 Volume Discounts

**MERVIN M. KREIDER**

Frystown, Pa.  
 717-933-8943

## Soybean growers ask assurance there will be no reserve

ST. LOUIS, Mo. — The American Soybean Association Monday urged Secretary of Agriculture Bob Bergland to take immediate action to use foreign food assistance programs to move any soybeans purchased by the Commodity Credit Corporation.

Such a move, said ASA officials, would assure the soybeans and soybean products purchased by CCC to offset the recent resale of soybean contract rights, purchased after the Soviet embargo, will not hold down market prices in the future.

"It appears that USDA now intends to move ahead with plans to purchase from 10 to 15 million bushels of soybeans from farmers and country elevator operators in the next few weeks," said ASA President Allan Aves in a letter to Bergland.

"ASA does not quarrel with the contention that such purchases will stimulate market prices, but there is little doubt that future sales on the domestic market from such reserves would have a

dampening effect on soybean prices."

Aves pointed out that ASA has always opposed a federally held reserve on the basis that such reserves overhang the market and interfere with the operation of the free market system. Farmers and the grain industry have always maintained adequate grain stocks and are prepared to do so in the future, he said.

"Any soybeans or soybean products purchased by the Commodity Credit Cor-

poration should be isolated from the domestic market and should be used only in foreign food assistance programs under the Food for Peace program (PL 480) or for resale under the intermediate term credit program authorized under the Agricultural Trade Act of 1978," Aves said.

"These restrictions will assure that the soybeans and soybean products purchased by CCC now will not hold down market prices in the future," he concluded.

## Bureau forms economics division

PARK RIDGE, Ill. — American Farm Bureau Federation President, Robert B. Delano, announced Tuesday the formation of an economic research division. John K. Hosemann was named senior economist to head up the new AFBF unit.

Hosemann, a native of Mississippi, has a masters degree in agricultural economics from Mississippi State University and did doctoral work at Virginia Polytechnic Institute. He joined the AFBF staff in 1973 and for the past two years has worked as research economist assisting the chief economist, W.H. "Gene" Hamilton, who retired April 1 after 40 years of Farm Bureau service.

The economic research division will be responsible for expanding the federation's economic research capability and will serve as

resource for the organization on technical economic aspects of public policy issues and discussions.

Other staff members of the new division are Ross C. Korves, research economist, and Sue Amigoni, research assistant. Korves is responsible for expanding Farm Bureau's use of the Wharton

service in agricultural outlook and policy analyses. Amigoni is in charge of the division's reference materials, agricultural data and general files.

Hosemann's new responsibility will also include research projects for the AFBF Research Foundation, according to Delano.

## York Co. DHIA

(Continued from Page C40)

Ralph L Innerst	3	3-9	303	13,564	37	505	
Laverne & Judith Hess	54	3	3-9	305	16,674	30	501
Edwin L Calhoun	9	3	4-10	305	16,340	36	585
Eugene B Taylor	71	3	2-2	295	12,318	41	501
Fairy	3	4-9	305	13,642	39	531	
Larry & Iz Eddinger	4	4-4	305	8,554	65	559	
Freddy	4	4-4	305	8,554	65	559	
Robert W Mays	22	3	3-3	305	15,896	34	536
Dale L Barshinger	67	3	5-7	305	14,455	39	566
68	3	5-10	272	14,919	38	567	
Robert Baumgardner Jr	Polly	3	7-6	285	12,806	40	516
Big T Holsteins	Glo	3	3-11	270	13,236	44	580
13	3	2-2	305	13,916	36	500	
David Stewart	May	3	7-7	305	19,530	45	871
Dara	3	2-3	305	14,519	46	662	
Mc Ral Dairy Farm	166	3	8-2	305	17,883	35	633
429	3	3-1	305	23,579	27	643	
430	3	2-10	305	16,357	38	617	
431	3	3-8	305	19,579	27	521	
459	3	2-2	305	18,060	29	517	
463	3	2-6	305	16,515	41	683	
465	3	2-2	305	15,403	37	577	
466	3	2-1	305	18,941	27	502	
471	3	1-11	305	16,199	32	513	
472	3	2-5	305	13,259	40	528	
474	3	1-9	305	13,884	37	512	
Galawn Farms	Blossom	3	6-8	305	17,040	40	676
Josie	3	6-1	305	19,247	34	656	
Faith	3	5-5	305	20,984	34	710	

## FRYS' RENDERING WORKS INC.

Dealers In:

- Hides • Bones • Tallow
- Restaurant Grease

For Further Information Call  
**717-464-2631**

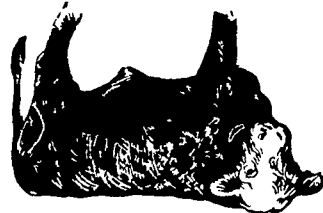
or Write:

2114 Hollinger Rd., Lancaster, PA 17602

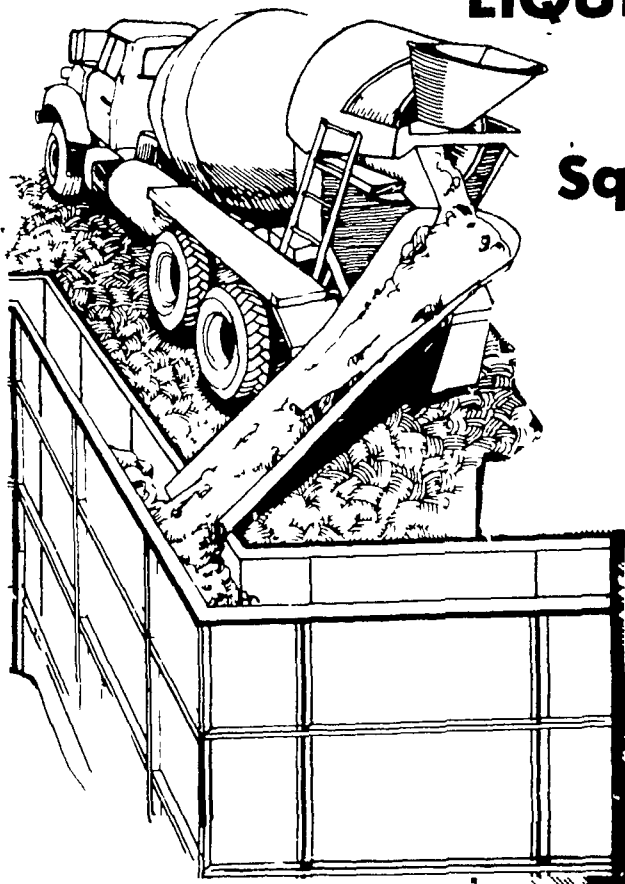
Dead Animals Removed  
 Promptly

No charge within a 15 mile  
 radius of Lancaster

717-464-2631



## POURED CONCRETE WALLS MANURE STORAGE LIQUID OR DRY



**Square or Round Walls  
 Built Below or  
 Above Ground**

Aluminum Forming System using  
 Redi-Mix Concrete and  
 Reinforcing Steel

This gives us flexibility to form a  
 manure storage system to fit your  
 layout.

PRICES QUOTED ON SLOTTED FLOOR  
 MANURE STORAGE SYSTEMS

Your Layout May Work with A Gravity Flow  
 System which would save dollars.

Let us Check It Out.

Call Ken Groff.

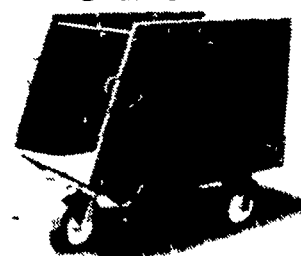
## STRASBURG POURED WALLS

RD 2 Box 8

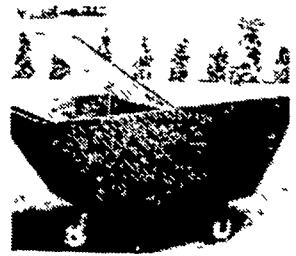
Strasburg, PA 17579

Phone (717) 687-6668

## SILAGE AND FEED CARTS



34" Wide, 62" Long,  
 53" high, capacity (to feed  
 35 to 40 Cows)  
 16" Ball Bearing wheels  
 For very easy handling



28" wide, 60" long,  
 35" high, capacity 600 lbs  
 Choice of 10" pneumatic  
 or semi-pneumatic wheels

Many Other Sizes Available

We Also Manufacture Swivel Casters for  
 16", 12" and 10" wheels  
 MANUFACTURED AND DISTRIBUTED BY  
**SCENIC ROAD FARM SUPPLY**

3539 Scenic Road

Gordonville, Pa 17529

— AUTHORIZED DEALERS —

**AARON S. GROFF & SON**

RD #3, Ephrata, PA 17522

Phone (717) 354-4631

**ATLEE F. REBERT**

RD 2 Littlestown PA 17057

Phone (717) 359-5863

— DELIVERIES AVAILABLE —