

Trout

(Continued from Page C38)

islands to the end gate. And sure enough, there they were, rising to the surface begging for feed, their tags glinting in the sunlight.

Arthur explained possible problems in growing the fish include two conditions — popeye and finwear. Popeye is generally a result of less than desirable water quality and is characterized by the fish's eyes bulging from their head. Finwear generally results from overcrowding and is harmless. It's characterized by white edges on some fins.

Ames also noted that one

of the problems the club is concerned about is the theft from the nurseries of trout by Blue Herrings, a protected species of bird, and by two-legged dirty birds.

All three clubs will hold junior fishing rodeos in the next few weeks and stock the local streams. Then the pools will be scrubbed, new feed rations bought and the fingerlings delivered to start the yearly cycle all over again.

As you reel your prize catch in, the plans will already be in motion for raising next year's hatch. And behind those plans, are local clubs and individuals like Arthur Ames who are working for the benefit of all area sportsmen.



Northeastern Lancaster County Rod and Gun Club uses these facilities on the Harry Burkholder farm to raise their fingerlings.



These are the headwaters of Groff's Run near New Holland. This old spring dates back over 200 years and is commonly called the Wenger-Groff spring. The spring is located in the basement of the Wenger farmhouse.

BARN PAINTING

Call Us Now
For Free
Estimates

PHARES S. HURST

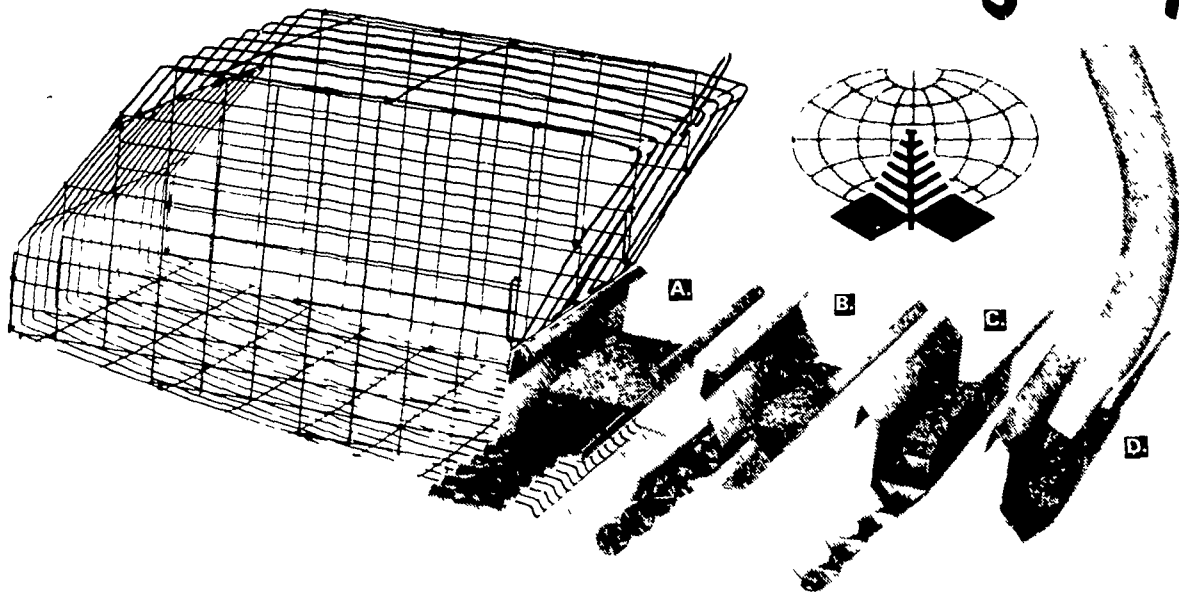
RD 1, Box 420
Narvon, Pa 17555
215-445-6186

BRUNING Paint Company



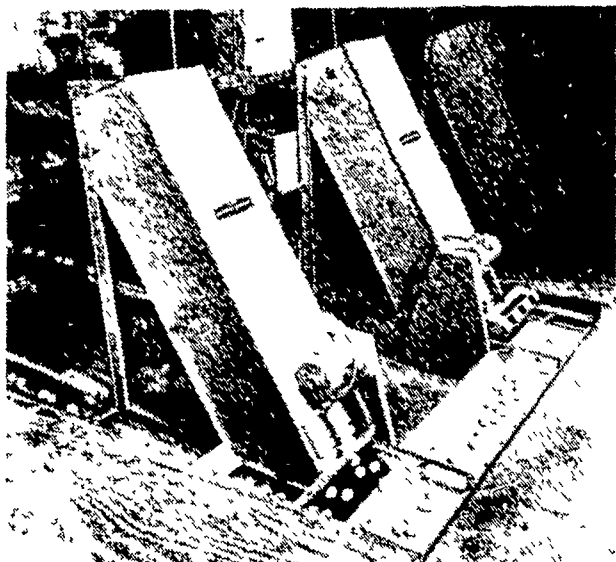
THE SYSTEMS PEOPLE

Diamond Cage Systems



YOUR CHOICE OF FOUR
AUTOMATED FEEDING SYSTEMS:

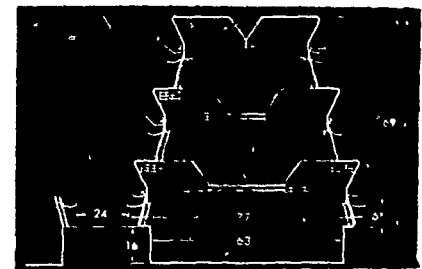
- A.** New Flat chain system.
- B.** New link chain tube system.
- C.** Deep "V" F-80 Chain system.
- D.** Exclusive Feedsaver® System



"Egg Maker Series" 3- and 4-high reverse cage layer system

- Triple "A" Line uses vertical space to house birds and reduce building and maintenance costs
- Plastic manure deflectors, no chute scrapers
- Contour Cages, 20" deep
 - 12" width — 4 birds (240 birds/10' section)
 - 15" width — 5 birds (240 birds/10' section)
 - 24" width — 9 birds (270 birds/10' section)
- Doors — on top for bottom tier
— on front for middle and top tier
- Egg belts — plastic or woven fabric
- For concrete or deep pit houses

DIAMOND EXCLUSIVE



NON-MECHANICAL SCRAPERS

See Us About Converting Your Existing Cages
With A Diamond Cage System

FULL LINE
PARTS
DEPARTMENT



WE SELL,
SERVICE AND
INSTALL

