

REAL ESTATE

REAL ESTATE

REAL ESTATE

REAL ESTATE

REAL ESTATE

REAL ESTATE

**REAL ESTATE FOR SALE  
IN BERKS COUNTY, PA.  
ATTENTION POULTRY FARMERS**

Beat the high cost of building a new layer house (NEW IN 1977) High Rise-Tri Deck, 35,000 cap layer house, completely automated, Big Dutchman Equipment, 2, 25 ton feed bins, 65 KW emergency generator system, Staalkat egg packer, egg cooling room, etc House now in production, (present flock negotiable)  
Farm consists of **60 ACRES**, with a modern 4 bedroom farm house, bank barn, (with addition), 5 stall horse barn, corn crib, butcher house, smoke house, 2 other small out-buildings Stream runs thru property **PLUS, 2 mobile home rental units.** Quiet rural setting in agricultural area Firm Price of \$390,000 (no brokers or triflers please)  
Call (215) 562-7776

**NEW LISTING -  
AVAILABLE IMMEDIATELY  
CAYUGA CO., NY DAIRY FARM**

256 Acres, straight thru 39 stanchion barn, 2 concrete silos, 1 Harvestore all with unloaders, basement barn with bull pen & heifer area, two drilled wells, Honeye & Lima soil, main house, 3 bedrooms, modern kitchen, fireplace, both oil & new wood burning furnaces Good 2nd house & barn, full line of machinery available Owner will finance Farm \$295,000, with machinery \$385,000  
Call Collect  
**MAL-TUT REAL ESTATE**  
Box 265, Auburn, NY 13021  
315-253-3813 or  
Eve. 315-252-1046

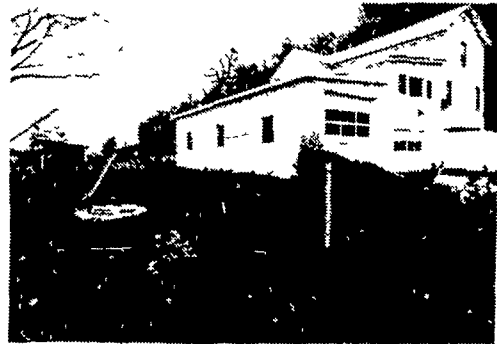
**SHEETZ REAL ESTATE  
RAY N. WILEY INC.**

323 W. Main St.  
Mount Joy, PA  
**CALL 653-1481**  
**FARM LISTINGS NEEDED**  
Farm Salesman-Eugene Kreider

**DAIRY FARMS AVAILABLE NOW**

Shirley Twp., Huntingdon Co. - 380 acres more or less, 160 tillable, 60 pasture, 160 woodland. Stone house, dairy barn, restaurant & other buildings included - greenhouse & tenant house. 50 free stalls & milk parlors. Commercial frontage near community of 6000. \$347,500 including restaurant. Restaurant & commercial frontage may be separated to substantially reduce price. Owner financing to qualified buyer.  
Operating dairy farm, Shirley Twp., Huntingdon Co. - 3+ miles from previous farm. 360 acres, 200 tillable, 75 pasture, 95 woodland, large barn, 50 free stalls, house & other outbuildings, \$275,000.  
Marklesburg Boro, Huntingdon Co. - Dairy farm & development property. Check the views from this farm & the water in Raystown dam. Yes, you can see the water. 165 acres +/- with dairy barn & frame home. The farm is presently actively cultivated. Dairy facilities used till 1979. Ideal investment property in the Raystown area. \$349,500. Owner financing preferred.  
Umom Twp., Huntingdon Co. - 137 acre farm with house, tenant house, barn & garage, 100 acres tillable, 17 pasture & 20 wooded. Excellent spring. Ideal development property. Owner will subdivide, \$119,500.  
Call  
**HUNTINGDON COUNTY  
REAL ESTATE, INC.**  
305 Penn St.  
Huntingdon, PA 16652  
814-643-5010 anytime

**Endless** We're Town and Country  
**Mountain**  
**Real Estate**  
**Co.**



**BARGAIN OF THE WEEK!**

5 Acres and a lovely 9 room home with 3-4 bedrooms, 1 1/2 baths, floors hard wood and carpet, Large garage for tractor trailer and another for your car Large lawn with fruit trees, grape vines, poultry house and pasture with trout stream Just reduced to \$36,000

RD#1 Box 203-A, Covington, Penna. 16917  
Office Hrs. Mon-Fri. 10 to 5:00 P.M.;  
Sat. 12:30 - 5 P.M.  
Office Phone - 717-659-5684  
R. Chamberlain RES-Phone 717-549-4173  
P. Strange RES-Phone 717-549-3202  
You may call these numbers anytime

**FRANKLIN CO. FARM  
FOR SALE BY OWNER**



97 acres shale ground, 85 acres tillable, 8 room house, remodeled and heated by coal stoker furnace, could be developed. Hard road frontage Owner will finance at low interest rate Installment loan payments  
Call after 4 p.m.  
717-532-6384  
or write  
P.O. Box 160  
Orrstown, PA 17244

**NORTHUMBERLAND CO. &  
SURROUNDING AREAS**

90 acre farm, 60 tillable, balance woods & pasture, large remodeled 5 bedroom home, large bank barn machine shed, hog barn, corn crib grain bin \$120,000  
24 000 cage layer operation 2 180' barns easily converted for other uses, 64 acres 55 tillable modern home \$122 000  
75 acre general farm 40 tillable, 20 pasture coal furnace house completely insulated, new fencing, pond, 2 streams, 8000 bu corn crib 50 x 50 barn 50 fruit trees, \$110 000 45 additional acres at \$45 000 Make offer owner wants to sell  
150+ yr old operational stone mill plus brick home on 44 acres use water power or make your own electric \$89 000 25% down 9% interest  
7 acre farmette, large 4 bedroom home large barn, stream through, \$46,000 100 acre farm, feed lot w/20x60 Harvestore silo, bunk feeder bank barn, 90 acres tillable, no house \$169 000 This may be bought w/farmette  
78 acre Schuylkill Co dairy farm, 28 stanchions, barn built in 1972, 40 x 14 silo w/unloader modern 4 bedroom home, \$135 000  
140 acres 100 tillable large house & barn, \$210,000 may be rented with option to buy  
110 A. 85 tillable, good barn, no house \$110 000  
**Plain Acreage**  
45 acres 25 tillable \$1000 per acre  
10 15 acres all wooded \$1500 per acre  
25 acres 2 streams 12 acres tillable \$37 500  
10 acres mostly tillable, some timber \$15 000  
Berks Co wooded lots near State Gameland 53 21 8 1/2 & 14 acres \$900 per acre financed at 29% down 8% in terest for 10 years

Many of these owners will finance 9-12% Interest  
**PROFESSIONAL PROPERTY  
BROKERS, INC.**  
215-362-1290  
Farms & Acreage Call  
Peter Cortelyou, L.R.E.S.  
717-682-8135

**FARMS FOR SALE  
NEGOTIABLE POSSESSION ON  
MOST OF THESE**

**LANCASTER COUNTY**

27 acres, Bird-in-Hand with large stone mill & large stone house.  
65 acres with enough room to hang 25 acres of tobacco, 30 acres zoned industrial.  
46 tract along Rt. 30 west.  
8 acre farmette, Hopeland.  
**OTHER COUNTIES**  
147 acre dairy farm, 35 cows in new barn, 2 silos and bulk tank, implement shed and corn barn, assumable mortgage. Lycoming Co.  
104 acre farm with 60x100 barn, corn barn and 3 bedroom house. Lycoming Co.  
39 acre farm near N<sup>o</sup> 301e, good place to setup for hogs or chickens.  
160 acre farm with 2 houses and large bank barn, 90 acres tillable, available for this season, possible owner financing \$120,000 Huntingdon, PA.  
375 acres, 200 tillable w/beautiful dairy set-up. Huntingdon Co.  
151 acres, general farm, 125 tillable. Huntingdon Co.

609 acres, Northumberland Co., fields 2 miles long, large grain facility.  
98 acres 3 miles east of Lewisburg, beautiful general farm, lots of room frontage.  
127 acre general farm near Danville.  
**FARM & HOME REAL ESTATE**  
Smoketown, PA  
717-291-2270

"EQUIPMENT-POOR", owner overspent on this nearly-new equipment, (JD 4020, Leyland 270, Case 630 & MF 1135 tractors), new 48 tie barn w/14x50 silo, cleaner, transfer system 95 5 acres, all tillable New 3BR ranch type home Cattle, tractors, equipment \$150,000 JUST LISTED!

110 COW HOOD FREE STALL BARN, Surge 8 unit parlor, 20x65 plus trench silo 252 acres Eastern NYS, 210 tillable Good 10 room home \$220,000 bare or \$320,000 complete JUST LISTED!

GREEK REVIVAL HOME OVERLOOKING POND on this 65 acre Gentleman's farm Home in good condition has stone fireplace, nice woodwork, attached garage Barn JUST LISTED AT \$52,000 with \$21,000 down

LARGE WATERFALLS on 110 acres near pretty Cooperstown, about 80% wooded Sets back on lane JUST LISTED AT \$33,000 w/29% down

ONE OF OUR BEST 476 acre farm accomodates 156 milkers, has about 300 tillable good cash-crop land 2" pipeline in barn plus automatic feeding, 3 Harders plus Harvestor silo Quality home w/apartment plus tenent house 175 cattle, top line of machinery \$580,000 complete

"GONE WITH THE WIND-TYPE HOME", btfl pillared Colonial, 2 1/2 baths, marble fireplace 100 cow free stall barn has Challenger feeders, 3 silos, Delaval parlor 300 acres, about 270 tillable \$35,000

NEW 70 TIE BARN with 2" pipeline & enclosed manure drop on 145 acre farm in Countie's best land area, nice large fields, private location Newer 5 bedroom ranch home Asks \$165,000 w/all offers considered WIDOW MUST SELL!

MANY OTHERS FREE DAIRY LISTS



**WIMBLE REALTORS**  
**SLOANSVILLE, NY**  
518-875-6355