

Public Sales Register

Closing Date - Monday, 5:00 P.M.
of each week's publication

SAT APR 19 - 11 00 A.M.
Public Consignment Auction
sponsored by Wellsville, NY
FFA. Held in Yorks Corners,
NY, 5 miles south of Wellsville
on Rt 19 Si Pepperman Auc-
tioneer

SAT APR 19 - 9 30 A.M.
Doylestown Dodge, Inc
Garage Auction 127 S Main
St., Doylestown, PA Rodman
Geyer Auctioneer

SAT APR 19 - 11 00 A.M. Hun-
tingdon Co Holstein Heifer
Sale Held at the Huntingdon
Co Fair Grounds, off Rt 22 at
Huntingdon PA Dale Gibbonney
and Mark Glick Auctioneers

SAT APR 19 - 1 00 P.M. Con-
signment Horse Sale Held at
Beil's Sales Arena, Along Rt
15, York Springs, PA Dave
Martin & Dennis Brownawell
Auctioneers

SAT APR 19 - 10 30 A.M.
Public Sale of Antiques,
Building Materials, Poultry
Equipment Located 5 miles
east of Lancaster on Rt 340
between Smoketown and Bird-
in-Hand across from Vallors
Sale by Richard Welk Alvin
Miller and Elvin Seigrist Auc-
tioneers

SAT APR 19 - 10 30 A.M.
Public Sale of Farm Machinery,
Equipment and Tools Located
on Fallston Rd MD Rt 152, ap-
prox, 10 miles west of Bel Air
(Via Rt 1) and approx 18 miles
southeast of I-83 (Baltimore-
Harrisburg Expressway) via ex-
it 36 and MD Rt 439 and MD
Rt 23 to Madonna and MD Rt
152, Central western section
of Harford Co., MD Eugene St
C Hess and Sons Owners
John H O'Neill Auctioneer

SAT APR 19 - 11 30 A.M.
Public Sale of Farm Equipment
and Hay Located on premises
at Rd 3, Annville, North Ann-
ville Twp., Lebanon Co., PA
Take Rt 422 west of Annville
approx 1 mile and turn right
onto clear spring road at
former Millarden office and
continue north to 2nd road left
which is School Creek Lane
and continue to first farm on
left Conditions by Leonard
McFeaters Harry H Bachman
Auctioneer

SAT APR 19 - Seeley Disper-
sal Westfield, Tioga Co., PA
Conducted by Rumsey's of
Bath NY

SAT APR 19 - 10 00 A.M.
Ralph Hugo Estate Auction,
Sullivan Co., New Albany, PA
Mrs Ruth Hugo Owner, Jerry
Burke Auctioneer

SAT APR 19 - 10 00 A.M.
Public Sale of Farm Equip-
ment, For Ellsworth L Cle-
ment, 423 Grove Rd,
Thorofare, NJ Sale conducted
by Sickler & Scott Auctioneers

SAT APR 19 10 30 A.M.
Public Sale of Farm Machinery,
Tools, Household, Antiques,
Livestock and lumber Located
5 miles west of New Bloom-
field, on Clouser Hollow Rd,
Perry Co., A J Fosselman
Owner Kling's Auction Ser-
vice

SAT APR 19 - 10 A.M. Special
Tool Auction, Farm, Lawn,
Masonry, & Carpentry Tools
Located at Seidof's Auction Shed,
Sciota, Pa Sale conducted
by Seidof's Auction Shed

SAT APR 19 - 9 00 A.M. Con-
tinuation Auction of Hecht's
Hardware Co at Bonnie Brae
Auction Center, Rt 724, bet-

ween Spring City and Phoenix-
ville By order of Howard Mon-
tgomery Hess & Moyer Auc-
tioneers

SAT APR 19 - 9 00 A.M.
Public Sale of Farm Machinery
and Pigs and Feeder Cattle,
Located 2 1/2 miles north of
Carlisle, along Rt 74, Wickard
Bros Owners, Robert Muller
dore Auctioneer

MON APR 21 - 10 00 A.M.
Public Sale of Valuable Real
Estate, 2 Adjoining Farms and
Farm Equipment Ivan R Lehr
Estate To be held 3 miles west
of Dover, PA, to the Village of
Admire, thence turning south
1/4 mile - or - midway between
York & East Berlin on US Rt
234thence turning north 1
mile at Biesecker Rd then
south 1/2 mile Clair Slaybaugh
Auctioneer

TUES APR 22 - 1 00 P.M.
Public Sale of Real Estate
Located 444 N Duke St, Lan-
caster, PA Sale by Robert E
Myers Jr Howard Shaub and
Roy C Probst Auctioneers

TUES APRIL 22 - 2 P.M. Public
Auction of Valuable Real
Estate, 35 acres located North
West of Manheim, Penna
along the Cider Press Road, 1
mile N.E. of Mastersonville just
to the North of Mt Hope
Dunkard Brethren Home,
Rapho Township, Lancaster
Co, Pa Sale by Catherine and
Bertrand Dumont E M Murry
Associates, Auctioneers

TUES APR 22 - 12 00 P.M.
Central PA Spring Classic Sale
Held at the Reedsville Youth
Park in Mifflin Co., PA About
60 miles northwest of Har-
risburg, PA Exit Rt 322 at
Reedsville onto Rt 655 to
Reedsville R Austin Backus,
Inc Sale Manager and Auc-
tioneer

WED APR 23 11 00 A.M.
Public Sale of Real Estate Ivah
R Lehr Estate Located 1 mile
north of East Berlin on US Rt
194, thence turning west onto
Renolds Rd 1 mile in York Co.,
PA Clair Slaybaugh Auc-
tioneer

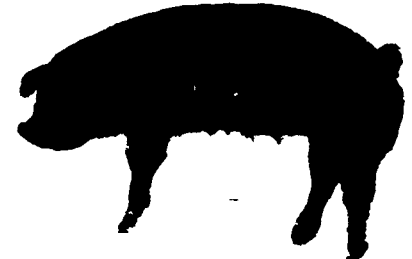
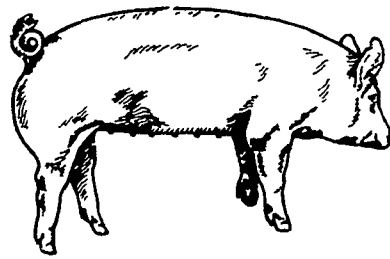
Lawrence, Leon and Thomas Arnold 14th PRODUCTION

SALE

Yorkshires

OF

Durocs



AUCTIONEER, Harry Bachman, Annville, Pa.
Approx. 50 BRED GILTS
(All gilts are hand mated)

Special Feature

Purebred gilts bred for crossbred litters to farrow June &
July. Should produce some excellent pigs to feed for farm
show.

OPEN GILTS

(25 Yorkshire Boars) (15 Duroc Boars)
Seven to eight months old, ready for heavy service.

20 Registered Yorkshire or Duroc
20 Commercial Yorkshire

Friday Evening
April 25, 1980, 6:00 P.M.

SALE TO BE HELD AT THE
Lebanon Area Fairgrounds
(CORNWALL & EVERGREEN ROADS, 1 1/2 MILES SOUTH OF)
Lebanon, Pa.

FOR CATALOGUE WRITE TO
LEON L. ARNOLD R.D. 7, BOX 705, LEBANON, PA. 17042
OR CALL 717-273-5880

—Reminder—

BIG ESTATE AUCTION OF GRAIN & HAY MACHINERY

S.P. COMBINE - 9 TRACTORS
- BIG MACHINERY

MONDAY, APRIL 14

AT 10:30 A.M.

For the Estate of Victor Pisarek, Pineville, Pa. 8 miles S.E. of
Doylestown, Pa. Take Rt. 202 to Lahaska, Pa. turn S. on Street Rd. go 2
miles to Dead End, turn right on Ridge Rd. and 1 mile to farm.

10:30 A.M. — some new and used parts, etc.

11 A.M. 9 Tractors — White 2-150 DL factory cab 150 hp 1500 hrs., A.C. 220 DL, White
1550 DL Backhoe ldr., 2- M.M. 5 Star tractors 1 with WF, MM Jet Star WF and PS,
M.M. M5 with WF, MMZ, MMG1000 DL rebuilt motor sells apart, set of 20.8-38 duals.

AC GLEANER Model M SP Combine DL with cab, duals, 15 ft. grain hd., 6x30 corn
hd.

BIG TILLAGE & PLANTERS - White 22 ft. hyd. wing disc, Brillion 22 ft. hyd. wing
cultimulcher, Oliver 6 btm semi mtd. plow, Paulk 12 ft. Chisel plow 3 PTH, White 5400
6 x 30 row no till plateless planter liq. J.D. 1300 6 x 30 row plateless planter liq., MF
#43 22 x 7 double disc grain drill with Liq. attach., Moline 16x7 grain drill, Oliver 18 ft.
field Cult. wing type, MC 12 ft. stalk cutter, MM 6 row 3 PTH cult., Handson 500 gal.
sprayer, 300 gal. sprayer.

HAY EQUIP. - The following all New Holland-1495 self propelled haybine 2 yr. old,
259 hay rake 9 ft., 282 SP hay baler wire, 178 SP baler as is, 47 ft. frame elevator
transport, IHC hay rake, N.I. hay rake, Kuhn hay tedder, Mayrath 18 and 32 ft. hay &
grain elevators, 3 flat hay wagons, MM 7 ft. 3 PTH mower.

GRAIN EQUIP. - 2 Grain Chief 450 grain dryers, 2 - 20 hp 3 ph motors, Long 18 ft. 6"
transport grain auger, 3 Long 35 ft. grain auger with motors 1 ph.

TRUCKS AND TRAILER - Trailco 26 ft. Alum Dump trailer, GMC 7000 DL truck
tractor full screw wet lines, Stoltzfus lime or fert. spreader body A-1 on a White DL
needs motor, 4 - Farm dump trucks 250 to 400 bu. grain bodies.

OTHER EQUIP. - N.H. 351 grinder mixer, Lely 3 PTH fert. spd., Calhoun 4 ton fert.
spd. as is, 100 bu. Oliver and 80 bu. Long manure spreader, Howard 8 ft. 3 PTH
rotavator, 2 - 150 gal. ammonia tanks. 66 Dodge pkup. plus 8 cars and fuel truck all as
is.

Plan to attend this gigantic Auction! Not responsible for accidents!

TERMS - Cash or Good Check with Identification paid in full Sale Day! Lunch
available!

By order of
EXECUTRIX ANN L. PISAREK

Auctioneer- Mel Manasse, Whitney Point, N.Y.

SALE MANAGED BY
COL. FRED R. DANIEL AUCTIONEERS INC.
NESHANIC STA., N.J.

201-369-4784 or 201-782-6734
(FARM SALES ARE OUR SPECIALTY)



LONICERA HERD DISPERSAL

At Shady Lane Dairy Sales, 1/2 Mile west of Quarryville, Pa. off Rt. #372
on Oak Bottom Rd.

The Complete Herd Dispersal of Registered Holsteins belonging to W.
Eugene Witwer starting at:

THURSDAY, APRIL 17 11 A.M. Sharp

55 Head of All Registered Holstein Cows Heifers, Calves and Bulls

30 Head of Mature Cows
9 Head of ready to breed heifers
2 Bulls one service age

5 Head of Bred Heifers
9 Head of heifers and calves

1979 Rolling Herd Average, 17,072 milk 3.7% test 625 fat
1 - 93 EE 3 - VG 8-GP and many first calf heifers not yet scored

Sires Represented: Astronaut, Elevation, Betty Chief, Ivanhoe Star, Wiss Double
Victory, Charmcross & Burke Kate.

Service Sires Represented - Ivanhoe Star, East Star, Pacemaker, Hilltopper
Silvercloud & Marvex.

Many cow family's sell including the 1979 Lancaster Co. Champion butterfat
producer.

JOYFULL - 93 EE 365 dys 26,473 milk 1222 fat. Her daughter sells - a Milu yearling.
Her Grand-daughter out of an Ivanhoe Star son with 365 2-2 21,577 731 fat; 295 3-5 21,517
638 fat Inc. And her daughter, a Milu yearling sells.

Just a sample of an outstanding herd and cow family selling.

Some other individuals include - SUN - a Dari Best Daughter with 4-9 365 27,392 932
fat. Pumpkin - 2-6 365 25,955 703 fat. Her Astronaut daughter and a maternal sister sell
with 3 records over 20,000 of milk.

Silvercloud - a service age bull out of AN Astronaut son with a 26,000 lbs. milk and
1192 fat record dam. His own dam has 4 records over 21,000 and 1100 of fat.

An outstanding herd with deep pedigree's and production. Many cows fresh and
springing sale time, many young cows - 10 first calf heifers and 4 second calves. A few
select brood cows. Some excellent show prospects.

Cows viewed by pre-arranged appointment only, all visitors out of barn at milking
times. Or cows may be viewed at sale barn anytime after April 15.

Certified & Accredited

Pregnancy Examined by Vet

Health Charts Sale Day

SHADY LANE DAIRY SALES

R.D. #4 Box 463 Quarryville, Pa. 17566
OWNERS

DAVID L. FITE
717-786-1725

GLENN D. FITE
717-786-2750

SALE TERMS AND CONDITIONS
Cash or Good Check Sale Day, Bank Financing Only, No Credit
All Sales Final
Lunch Available at Sales