

Bergland names Potato Board members

WASHINGTON, D.C. — Secretary of Agriculture Bob Bergland has named 32 members to three-year terms, beginning April 1, on the board which administers a producer-sponsored national research and promotion program for potatoes.

Appointments to the National Potato Promotion Board were made to fill vacancies left by members whose terms are expiring.

New potato board member from Pennsylvania is Keith E. Masser, Sacramento; others include:

California—Howard R.

Frick, Arvin; Lowell C. Keenyon, Tulalake; Arnold Kirschenmann, Bakersfield; Colorado—Robert W. Felmler, Center; Connecticut—Edward J. Hastillo, Jr., Broad Brook; Idaho—Lawrence V. Gray, Nampa; Le Roy Road, Idaho Falls; Donald W. Shelman, Pungree; Kentucky—Harold F. Hempfling, Hebron; Maine—Ned Berce, St. Agatha; Bob G. Irving, Caribou.

Michigan—Wesley F. Hessler, Rockford; Minnesota—Sherwood Peterson, Baker; New Jersey—

George R. Rue, Imlaystown; New York—Ernest Lewin, Riverhead; Paul J. McCormick, Bliss; North Dakota—Mike Kennelly, St. Thomas; Vermont—Bert H. Peaslee, Guildhall; Washington—Robert Halvorson, Toppenish; Art W. Prior, Warden; and Wisconsin—Nickolas Somers, Stevens Point.

Members being reappointed are:

California—Don M. Johnston, Bakersfield; Idaho—Kurt E. Kandler, Ashton; Maine—Glenn H. Manuel, Monticello; North

Dakota—James Hurt, Hoople; Oregon—Wesley L. Roberts, Ontario; South Dakota—Wayne J. Maynard, Clark; Washington—Steve Connors, Othello; Milton Mercer, Jr., Prosser; West Virginia—Edward C. Grose, Terra Alta; Wyoming—O.L. Holgerson, Albin.

Also, Richard Clemenson, Hoople, N.D., was selected to fill the unexpired term of a board member who is no longer eligible to serve.

Each state is entitled to one member on the potato board, plus one additional member for each five

million hundredweight (225,000 metric tons) of annual potato production above the first five million.

The potato research and promotion program is financed through producer assessments authorized by the Potato Research and Promotion Act of 1971. The

board carries out projects designed to increase consumption and expand domestic and foreign markets for potatoes.

USDA's Agricultural Marketing Service monitors the program and reviews budget, plans and projects.



SAVE \$ \$ \$

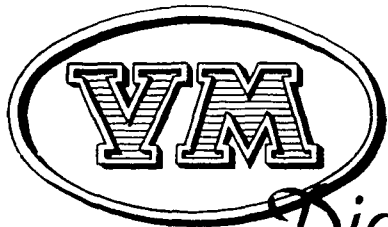
Ask Us For Repowering

REPOWER WITH VM DIESEL

Harvesters, Haybines, Tractors, Cornpickers, Balers, Hydraulic Systems, Corn Binders, Choppers

SAVE \$ \$ \$

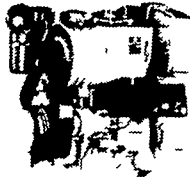
Ask Us For Repowering



1050 SU SERIES



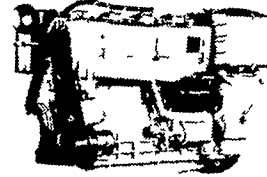
2800 R P M
22 SAE HP
20 DIN HP



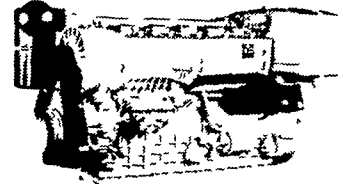
2800 R P M
44 SAE HP
40 DIN HP



2800 R P M
66 SAE HP
60 DIN HP



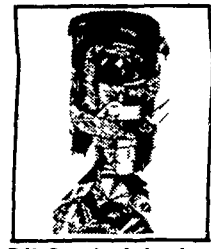
2800 R P M
88 SAE HP
80 DIN HP



2800 R P M
132 SAE HP
120 DIN HP

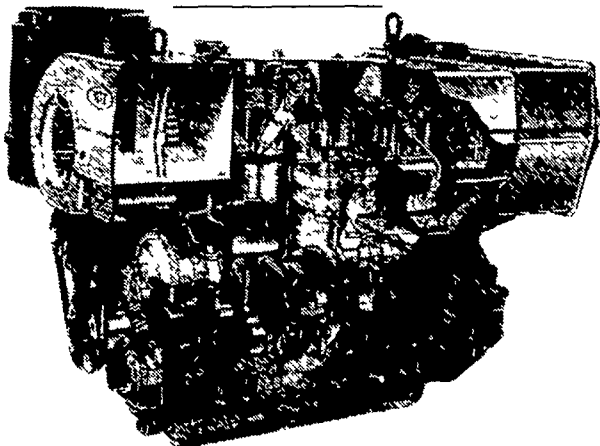
THE NEW AND REVOLUTIONARY FAMILY OF ENGINES

All New HR Series

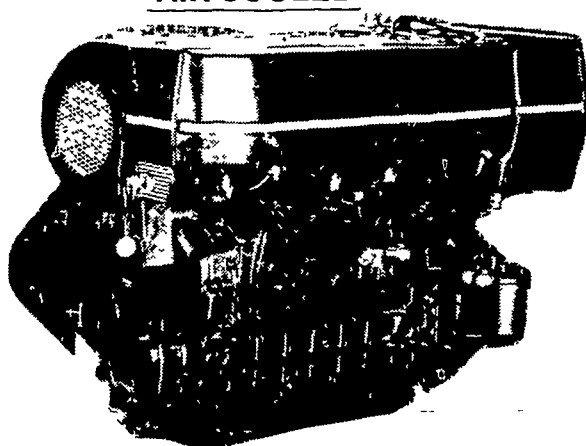


Oil Cooled Jacket

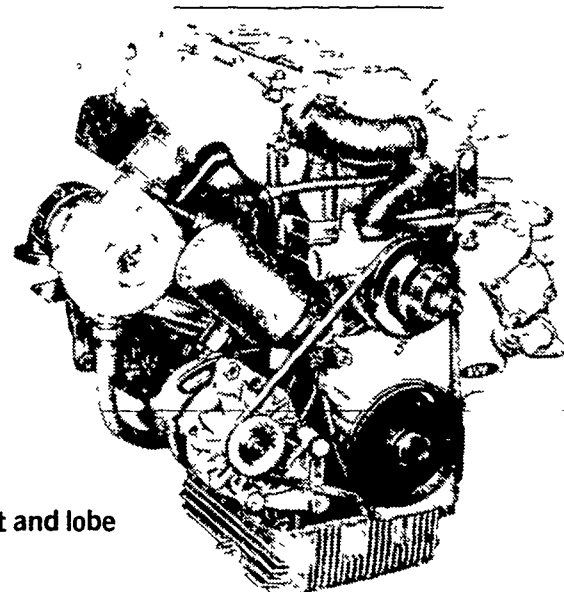
OIL COOLED



AIR COOLED



WATER COOLED



General Features:

- Integrally cast cylinders with inserted and removable wet type cylinder liners
 - Light hypereutectic alloy pistons
 - Extra-resistant steel connecting rods alloyed with special alloy head bearings
 - Surface hardened steel crankshaft
 - Drop-forged, casehardened and tempered steel camshaft
 - Anti-friction cast-iron tappets alloyed
 - Cast-iron tunnel type crankcase
 - Rotary injection pump with mechanical governor
 - Force-feed lubrication with built-in circuit and lobe type pump
 - Diaphragm pump feed
 - Oil and fuel filters with integral type element.
- Special structure and patented engine with consequent increases in performance and easier operation with low weight/output ratio low smoke emissions.
- Engine based on a design "modulus" formula which allows a maximum parts standardization and interchangeability.

Ask For Horsepower Ranges Of Above
THE "RIGHT FROM THE START" DIESEL ENGINE LINE
FOR FAULTLESS PERFORMANCE

USED DIESELS

- (2) SR 2 Lister
- (2) SR 3 Lister
- HRS 6 Lister
- 16/2 Lister
- 1 Cylinder Deutz
- DVA 2200 Slanzi
- P.J1 Petter

QUEEN ROAD REFRIGERATION

Box 67, Intercourse, PA 17534
Phone: John D. Weaver - 717-768-9006 or 768-7111
or Answering Service - 717-354-4374

24 HOUR SERVICE