

Home On The Range

(Continued from Page C6)

SPOON BREAD HAM SUPPER

½ cup chopped onion
5 tablespoons butter, melted
1 package (8½ ounces) corn muffin mix
1 cup chopped cooked ham
2 eggs, slightly beaten
¾ cup milk
½ teaspoon prepared mustard
1½ cups shredded Cheddar cheese
1 tablespoon sesame seed

Saute onion in 1 tablespoon butter for 5 minutes. Combine corn muffin mix, ham, 2 tablespoons butter, eggs, milk, mustard and 1 cup Cheddar cheese. Add onion and mix just until blended.

Pour into buttered 1½ quart casserole. Top with remaining ½ cup cheese and 2 tablespoons butter and sesame seed. Bake in preheated 375°F. oven 35 to 40 minutes. Cut in wedges and serve hot with Mushroom Sauce. Makes 4-5 servings.

Mushroom sauce: Stir ½ cup milk into 1 can (10¼ ounce) condensed cream of mushroom soup. Heat to boiling. Simmer 2 minutes, stirring constantly.

HAM QUICHE

1 9-inch unbaked pie shell
1½ cups shredded Swiss cheese
1 cup chopped ham
3 eggs
1½ cups light cream
1 tablespoon chopped chives
¾ teaspoon salt
½ teaspoon dry mustard
¼ cup grated Parmesan cheese

Sprinkle cheese, then ham over the bottom of the pastry shell. Beat together eggs, cream, chives, salt and dry mustard. Pour into pastry shell. Sprinkle with Parmesan cheese. Bake in a preheated 370°F. oven 30-35 minutes or until a knife inserted near center comes out clean. Let stand 20 minutes before serving. Serve warm or chilled.

HAM AND BAKED BEANS

2 large cans prepared baked beans
1 small onion, minced
½ cup catsup
½ cup light brown sugar
1 cup diced ham (put ham bone in also if available)
1 teaspoon prepared mustard
Combine all and bake in a greased baking dish in a 350°F. oven 1 hour.

HOT HAM SANDWICHES

2 cups ham, cubed
1-2 tablespoons mayonnaise
¼ pound cheese
Put ham and cheese through a food chopper. Add mayonnaise to moisten. Spread on whole wheat bread. Bake at 375°F. for 20 minutes.

Tips to get ready to garden

MEDIA — It's almost time to get out in the garden and James J. McKeehen, Delaware County Extension Agricultural Agent offers some tips to help you get ready.

If you plan to use left-over seeds from previous years, check them for germination first. They may be too old. Plant a few inside and watch them for a week or two to see how many sprout. If germination is low, throw the seeds away and buy fresh ones.

Make sure your gardening equipment is in good condition. Check out your spades, rakes, hoes, edging tools, and garden hose. Sandpaper any rough or rusty spots on the tools. Then clean them thoroughly and coat with oil.

There are an estimated 52 million dogs and 36 million cats in the U.S.

EASTER CHOIR PROGRAM

with tableaux
Presented by the choirs of
**The Midway Church
of the Brethren**
(13 Evergreen Rd., Lebanon, Pa.)
SUNDAY EVENING, APRIL 6th
7:30 P.M.
Everyone Welcome!

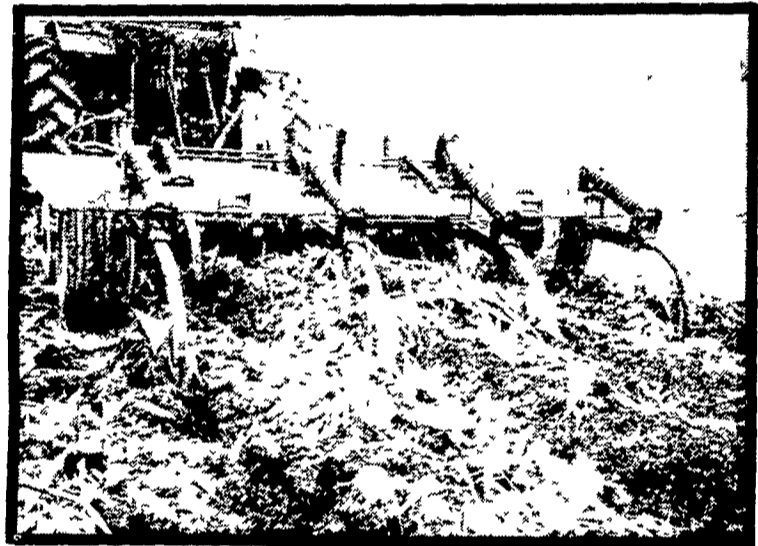
ANNOUNCING...

SOIL MANAGEMENT MEETING

With Don Schreifer, President, Advanced Ag
WEDNESDAY EVENING, APRIL 16, 7:30 P.M.



SOIL-MASTER



One trip through your field
SAVES you TIME, MONEY and most important, your valuable SOIL!

5 THRU 15 SHANK WILL BE DEMONSTRATED CHECK THESE FEATURES:

- Unique 1¼" x 2" high clearance shanks. Choice of Torsion-Master or Spring-Master shanks. 15" spacing between shanks.
- Heavy-duty 93½" frame depth. Combination yoke-block clevis and tongue jack. "Converta-Hitch" allows easy leveling adjustment.
- Hydraulic axles, 6 bolt hubs & rims for 11Lx15" flotation tires, transport safety-lock. 2" - 8" stroke cylinders with stroke control for precise depth setting.
- 20" dia. disc coulter blades slice stalks, leaves, stubble and root crowns into small bits, eliminates bunching and plugging.

BEFORE YOU BUY - CHECK OUR PRICES

HEISEY FARM EQUIPMENT, INC.

SALES, SERVICE & PARTS

- Leyland & Same Tractors • Taylorway-Dunham • New Idea • GT Dryers • Landoll • Dion

RD1, Box 2294, Jonestown, PA 17038

Phone 717-865-4526

Located ½ Mile South of Fredericksburg Off Rt. 343 in Shirksville

Business Hours: 7 A.M. to 5 P.M. Daily, Sat. till Noon, Evenings by Appt.

OTHER EQUIPMENT TO BE DEMONSTRATED:

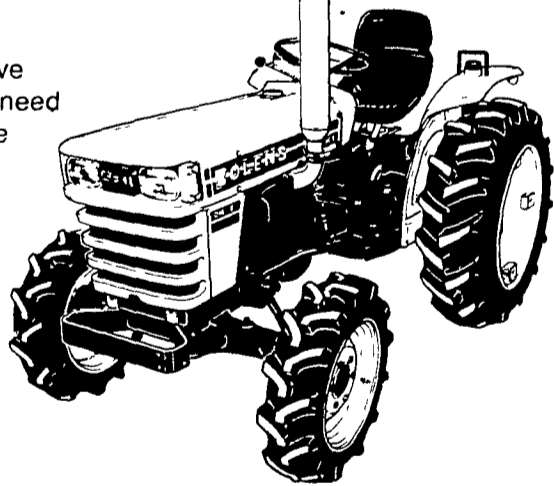
- TAYLORWAY CHISEL PLOW WITH TRASH EATER AND DISC HARROWS
- SAME 4-WHEEL DRIVE
- LEYLAND
- LAMBORGHINI CRAWLERS

WATCH NEXT
WEEK'S PAPER FOR MORE
COMPLETE DETAILS

Finally. A 24hp diesel tractor built for your kind of jobs

Bolens®

G244 24hp
4-wheel drive
Power you need
from people
you know



Big enough to till a garden Plow ground or move snow Handle a Front End Loader Or Backhoe Mow grass with Rear, Flail, Rotary or Gang mowers

Yet small enough to work where the big ones can't And don't forget about economy you'll get more work per gallon, more jobs for less money

\$200 FACTORY REBATE

FARMERSVILLE EQUIPMENT INC.

RD4, Ephrata, PA

717-354-4271

Hours Mon, Tues, Wed, Fri - 7:30 to 5:30
Thurs till 9:00, Sat till 3:00