

Fischer, Hoffman say April best for Egg Month

HARRISBURG— On receiving the official proclamation that April has been given the title of Egg Month by the Governor, John Hoffman, Executive Director of the Pa. Poultry Federation and Paul Fischer, President of the Pa. Egg Marketing Association agreed that this is the best month possible for such a designation.

The reasoning behind their statement is logical. They explained that the egg industry builds up a surplus of eggs in order to be ready for

the heavy demands for eggs that are traditional around Easter.

"After the holiday, there are usually surpluses and depressed prices, so we are hoping this will help keep the consumption of eggs high," said Hoffman. "This will help make the egg producer less vulnerable to the effects of surpluses."

"The egg is an all around product, not just an April value," said Fischer. "They're a bargain at \$1.09 or even \$1.29, which the consumers don't have to pay

for a dozen of eggs."

Fischer went on to say that the months from May to July are generally the slow egg months. He pointed out that consumers see a lot of specials at that time of year. "We have young flocks then, and good production."

The proclamation of April as Egg Month will go hand in hand with the producers attempts to promote their own industry through advertising check-offs.

According to Fischer, the current federal check-off rate is going to be increased

to 7½ cents per case if passed by the Senate. He added that the proposed increase has already gone through the House. Fischer said that 84 percent of the nation's producers are in favor of the increase because they realize they need to promote their product to increase per capita consumption.

Hoffman pointed out that in the past two years, egg consumption has increased, stopping the twenty year trend for consumption fall-off. He noted that the

number of eggs eaten per person per year has risen to 281 eggs. These eggs, he explained, were mostly in processed foods or used in cakes, pasta and other cooking.

The fact that consumption of eggs has been falling off since the 1960's is a reflection of the nation's eating habits, said Fischer. "People don't eat breakfast anymore," he said.

"We're trying to recapture some of the market and not put all of our eggs in one basket," said Hoffman, "so we're trying to get more

people to think of eggs for lunch and supper."

Hoffman, who joined the poultry federation after having been employed by a medical association, pointed out that eggs are the most natural source of protein available without additives, and for the lowest price.

He noted about six years ago cholesterol in eggs and other foods was considered to be a hazard to a person's health by most people in the medical fields. "Right now there is a controversy in the scientific community—more

(Turn to Page A28)

SAVE \$\$\$

Ask Us For Repowering

REPOWER

WITH VM DIESEL

Harvesters, Haybines, Tractors, Cornpickers, Balers, Hydraulic Systems, Corn Binders, Choppers

SAVE \$\$\$

Ask Us For Repowering

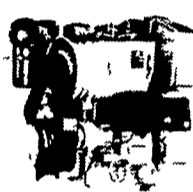


Diesel

1050 SU SERIES



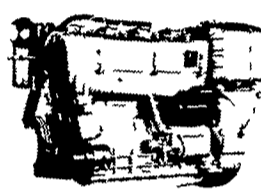
2800 R.P.M.
22 SAE HP
20 DIN HP



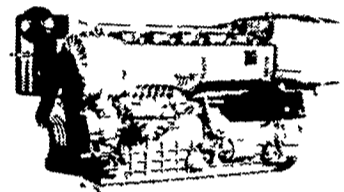
2800 R.P.M.
44 SAE HP
40 DIN HP



2800 R.P.M.
66 SAE HP
60 DIN HP



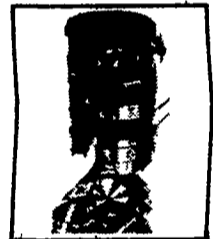
2800 R.P.M.
88 SAE HP
80 DIN HP



2800 R.P.M.
132 SAE HP
120 DIN HP

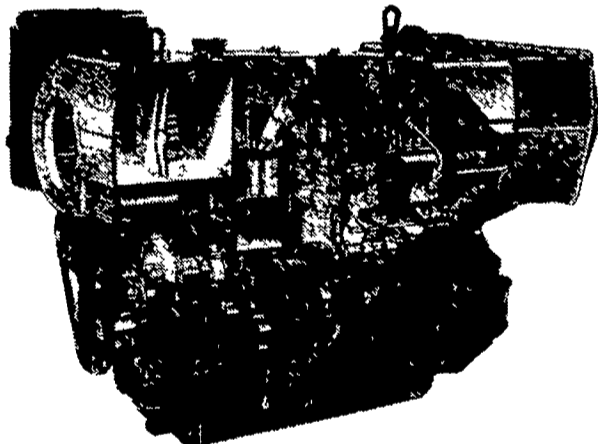
THE NEW AND REVOLUTIONARY FAMILY OF ENGINES

All New HR Series

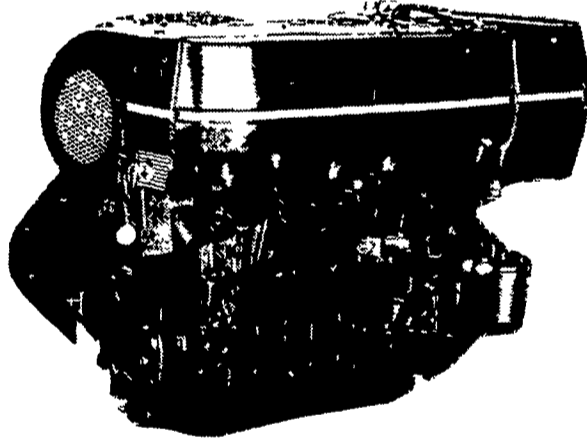


Oil Cooled Jacket

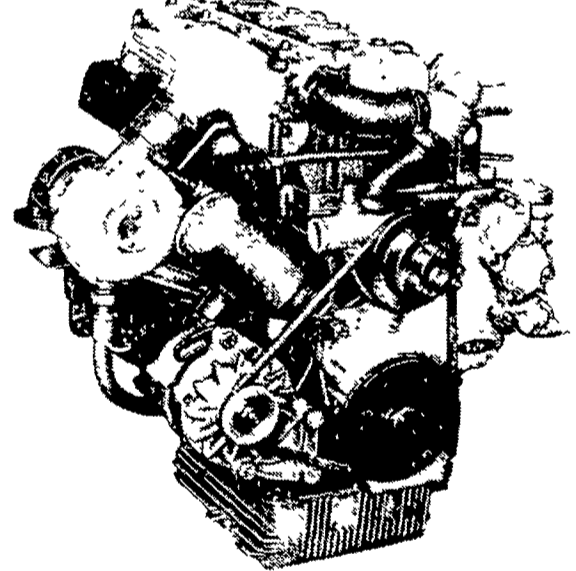
OIL COOLED



AIR COOLED



WATER COOLED



General Features:

- Integrally cast cylinders with inserted and removable wet type cylinder liners
- Light hypereutectic alloy pistons
- Extra-resistant steel connecting rods alloyed with special alloy head bearings
- Surface hardened steel crankshaft
- Drop-forged, casehardened and tempered steel camshaft
- Anti-friction cast-iron tappets alloyed
- Cast-iron tunnel type crankcase
- Rotary injection pump with mechanical governor

- Force-feed lubrication with built-in circuit and lobe type pump
- Diaphragm pump feed
- Oil and fuel filters with integral type element.

Special structure and patented engine with consequent increases in performance and easier operation with low weight/output ratio low smoke emissions.

Engine based on a design "modulus" formula which allows a maximum parts standardization and interchangeability.

Ask For Horsepower Ranges Of Above
THE "RIGHT FROM THE START" DIESEL ENGINE LINE
FOR FAULTLESS PERFORMANCE

USED DIESELS

- (2) SR 2 Lister
- (2) SR 3 Lister
- HRS 6 Lister
- F6L 912 Deutz
- Cylinder Deutz
- DVA 2220 Slanzi
- PJ1 Petter

QUEEN ROAD REFRIGERATION

Box 67, Intercourse, PA 17534
Phone: John D. Weaver - 717-768-9006 or 768-7111
or Answering Service - 717-354-4374

24 HOUR SERVICE