

PUBLIC SALE

From Route 11 at Inwood, W. Va. Turn East on Route 51 - Travel 3 miles to Ellinger's Market (formerly Haines') Turn right - .2 of a mile to sale -- OR -- From Charles Town, W. Va., Take Route 51 West - Go approximately 8 miles to Ellinger's - Turn left - .2 of a mile to sale.

SATURDAY, APRIL 12

10:00 A.M.

APPROXIMATELY 20 - 25 TRACTORS - Including Cubs, Fords, John Deere, Internationals, Fergusens, and many other makes. ALSO - We will be offering a good selection of plows, cultivators, wagons, new and used rotary cutters, post hole digger, discs, wood saw, rakes, baler, grain elevator, corn pickers and many other farm related implements.

We will also be offering a good selection of NEW AND USED TOOLS - Including carpenter tools, hand and electric tools, drill presses, socket sets of various sizes, plumbers tools, and other tools. These tools will be offered starting at 10:00 Sharp.

We will also be offering some household articles and some antiques.

TERMS: CASH. NOTHING TO BE REMOVED UNTIL SETTLED FOR.

Sale Mgr.,
EDGAR A. BOHRER
304-229-8354

AUCTIONEERS: MILLER AND BOHRER
CLERKS: Ware, Bohrer and Bohrer

NOTE: THIS IS A CONSIGNMENT SALE. If you have surplus farm items, tools, household articles, let us turn them into CASH. If you are considering having an auction, please contact us. We would appreciate your consideration.

Not Responsible For Accidents On Premises
Lunch Rights Reserved

PUBLIC SALE

SATURDAY, APRIL 19

10:30 A.M.

Full Line Of
FARM MACHINERY
3 TRACTORS

Located 5 miles East of Newville, Cumberland Co., PA. Take Rt. 641 to Crossroads Restaurant. Turn South 1st lane left, 2nd farm.

510 M.F. combine, 4-row corn head, 13 ft grain head
TRACTORS

856 Int Diesel Wide Front, Standard Shift 2860 Org hrs Front & Rear Wts.; 340 & 1000 P T O, nice cond, 18-4-38 Tires; Massey Ferguson Super 90 Gas Tractor, 3 pt Standard Shift P.T.O., Wide Front; J D 630 Gas, 3 ft Hyds Roll-A-Matic Front

TILLAGE EQUIP.

7 Tooth Glencoe Soil Saver, Int 5 Bot Plow, 16 in, semi-mounted; Oliver 252 Transport Disc, Dunham 12 ft Cultmulcher, Rotors on Front; Heavy Duty 12 ft Brillion Vibra Shank Harrow, Hi Clearance MF Transport Disc; Oliver 4 Bot Plow Semi-Mounted

HARVESTERS & PLANTING EQUIP.

P-T-10 Hesston Haybine 9 ft., used 1 season; N.I. Roto Bar Rake; 124 Massey Ferguson Baler, Hi Flotation Tires, Hyd. Control Thrower; 3 Bale Wagons; High Sides, 2 Wide Tread, 32 ft Little Giant Elevator with Corn Chutes & Collector, N I 28 ft 8 in Grain Elevator, 1 Season

2,000 Fox Harvester, 2 row Corn Head & Grass Head, used 3 Yrs. A-1-Cond.; White 4 row Corn Planter; Plant Aire series Fert. & Herb. Att; Acreage Counter, Monitor; 2 Badger Forage Wagons, used 3 yrs., 3 Beaters, Tandem Axles & Roof, Good Cond.

M.F. 13 Disc Grain Drill; Case 100 Forage Blower; Hawk Bilt Manure Spreader; N.I. 214 Manure Spreader; N.H. 33 Flail Chopper; 2-7 ft. Rotary Mowers; 3 pt. J.D. 101 Corn Picker semi-mounted; 3 ft. Scraper Blade.

Hanson Sprayer, pull type, P.T.O. pump; 3 ft Post Hole Digger; Model 250-S Generator, 25 Killowatt Rickey Elec. Waterer, never installed; 2 Elec Fly Killers; Cyclone Seeder, P.T.O., Metal Bolt Bin. Full line of bolts, sell as 1 unit.

4 Delaval Milker Units, Pails, Cow Clippers, 5 Feed Carts, good cond, Log Chains; 2 Elec Heaters, 220 Volt 1 Yr., 1 1/2" Milk Pipe Many items not mentioned. Sold by wagon load Small items sell first

2500 Gehl Skid loader with 3 Buckets & Cage

Terms By:

DURNELL O. & ANN MULLIN

Auct Steve Petersheim
215-869-2508
Clerks - Anna Petersheim
Elvin Beiler

Lunch Available

Auct. Note - Having sold farm makes this sale necessary.

AUCTION GOERS!

RESERVE SATURDAY, APRIL 19, 1980

for the

SEELEY DISPERSAL

at Westfield (Tioga Co.), Pa.

74 Holsteins, 3 tractors and all machinery.
See next week's issue for further ads!

MR. AND MRS. CLAYTON SEELEY,
Owners

Auction by Rumseys' of Bath, N.Y.

EXCELLENT ANTIQUE CLOCK & GUN AUCTION

SATURDAY, APRIL 12

9:30 A.M.

Located Rt. 6, Meshoppen, Wyoming Co., Pa.

Just a few items will be listed. Slag glass 2 door corner cupboard, 2 round oak tables, one with claw feet, 2 door oak ice box, larkins desk, 3 sets of 4 & 6 press back spindle chairs, 4 T back chairs, 4 poster brass bed, Shirley Temple doll, Rayo & Aladdin lamps, several old toys including fire engine, dump trucks & others

Glassware - Large quantity of pink depression, Roseville & Hill pottery, many others.

Clocks - 2 German Grandfather clocks, Henry Terry 8 day O. G. with wooden works, Ingraham school clock, Ansonia, 2 French marble clocks plus several other clocks.

Guns - 30-40 Krag, Remington Wingmaster model 870 16 gauge, Winchester 30-6 model 670A Elgin S.S. double barrel, 12 gauge Winchester pump model 1897, 22 Winchester pump model 62A, 303 Savage model 99, Marlin 256, Winchester Magnum model 62 lever, 22 Marlin model 80

Mr & Mrs Bosburg have been collecting for many years and are selling due to ill health

Owners:

MR. & MRS. BOSBURG

Terms - Cash
Sale Held Inside

Auctioneer Jerry Burke
717-833-5913

Lunch

PUBLIC AUCTION

REAL ESTATE

Household Goods-Antiques-Tools
SATURDAY, MAY 10

10:30 A.M.

Located in Cochranville, Pa. West Fallowfield Township in Chester Co. at the Junction of Rt. 10 & Rt. 41.

Real Estate to be sold at 1.00 PM and consists of 1 acre lot The improvements thereon are Ranch type all brick house with full basement and attic, 2 bedrooms, living & dining room, modern kitchen, utility room, full & partial bath, 2 car garage, Zoned commercial, in Octorara School District 10% down sale day, final settlement negotiable within 60 days. For appointment to see house, call 215-593-5361.

HOUSEHOLD GOODS & ANTIQUES

Dining room suite consists of ext. table, 4 chairs, hutch and sideboard, like new; 2 pc. living room suite; 3 pc. Oak bedroom suite, old & nice designs; hide-away bed, like new; 2 roll-away beds & mattresses; knee hole desk, solid wood; 4 old rockers, nice; breakfast set; Cherry table-drop leaf on one side, drawer on the other side, nice; treadle sewing machine, Philco No. 12 freezer; Frigidaire refrigerator; Hotpoint elec. cook stove, 2 ringer washers; iron bed; 2 TV sets; dresser; 1 pair of designed carved chairs; 2 carved chairs; elec. fan, reversible heat; old wheelbarrow; lots of tin & agate, many dishes; some collectors; 2 twin soap stone tubs; old plates; silverware; many items not mentioned; garden tools; shop tools; 2 rotary mowers, ladders, 10 ton screw jack; large vise; 10 ft. iron pig trough, chicken coops; old wood bits & collector tools; 1949 Diamond T Truck cattle bed

Food by Cochranville Methodist Church

TERMS BY
JENNIE F. GILL

ATTORNEY

Norman I. Pine
AUCTIONEER:
Steve Petersheim
Everett Kreider
CLERKS
Elvin Beiler

Anna Petersheim

AUCTIONEERS' NOTE This house & garage are full of goodies. Everything goes!

Sale Reports

M.M. Weaver & Sons, Inc held their annual consignment auction March 24 at the farm equipment store, 4 miles west of New Holland, Lancaster Co., Pa. There were 750 registered buyers present and the total sale amounted to \$290,000.

Some prices received were: J D 4430 Tractor \$16,400, IHC 826 Tractor \$9300, M.F. 50A Tractor Loader \$8100, M.F. 1130 Tractor \$7500, J.D. 1520 Tractor w/loader \$6175, M.F. 1085 Tractor \$6100, Oliver 1850 Tractor \$5000, M.F. 180 Tractor \$3850, J.D. 2510 Tractor \$3550, N.H. 478 Haybine \$3250, N.H. 352 Grunder Mixer \$2400, Gehl 630 Wagon \$1900, N.H. 707

Harvester \$1650, J D 1440 Plater \$1675, M.F. 105 G Tractor \$3200, Oliver 00 96 Crawler \$3000, M.F. 125 D Tractor \$2950, M.F. 50 Tractor \$2375, and M.F. Super 90 \$2250.

John E. and Paul E. Martin were the auctioneers.

xxx

The 5th Production Hog Sale was held March 23 by Calvin H. Lazarus & Sons at the farm, 4290 Bridge St., Whitehall, Lehigh Co., Pa. The sale was well attended and the bidding was good.

The bred gilts sold up to \$380 each; Service Boars up to \$350 each and Open Gilts up to \$130 each.

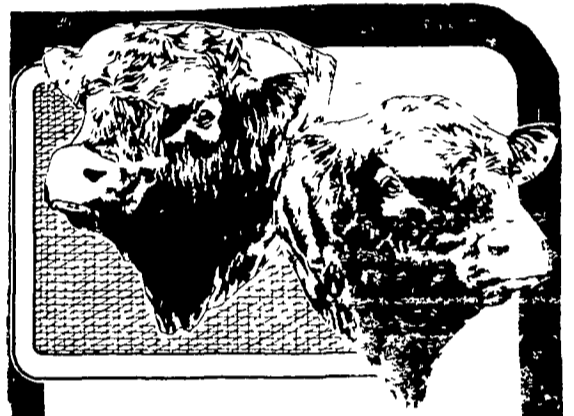
Auctioneer was Ralph W. Zettlemoyer.

PENNSYLVANIA SHORTHORN AND POLLED SHORTHORN BREEDERS' ASSOCIATION

SPRING SHOW AND SALE

SATURDAY, MAY 3, 1980

MERCER 4-H PARK, MERCER, PENNSYLVANIA



BULLS HEIFERS COW AND CALF PAIRS
SHOW: 3:00 P.M. GREG MCKEAN, JUDGE
SALE: 7:30 P.M. CHARLES J. BEHM, AUCTIONEER

For Catalogs please contact

PENNSYLVANIA SHORTHORN BREEDERS' ASSOCIATION

R.D. #2, Box 246, Volant, PA 16156
Phone (412) 533-2913

PUBLIC AUCTION

FARM EQUIPMENT - MIXED HAY

SATURDAY, APRIL 19, 1980

11:30 A.M.

Located on the premises at RD 3 Annville, North Annville Township, Lebanon County, Penna. Take route 422 west of Annville appx. 1 mile and turn right onto Clear Spring Road at former Millarden Office and continue north to 2nd road left which is School Creek Lane and continue to first farm on left.

1655 wide front Oliver gas tractor with over/under Hydraulic shift - power steering - 16.9-34 tires

Oliver 770 gas tractor with power steering

New Holland 271 PTO baler with 53A thrower; New Holland 469 mower conditioner; New Idea 2 row mounted corn picker; AC 4 bottom 16" 3 pt plow; New Holland 36 crop chopper; New Holland Super 717 Harvester with pickup head; New Holland 1 row corn head; Smoker 24' elevator; New Holland 4 bar side rake; McCormick 3 bot. 14" trailer plow; 2 flat bed wagons with hay sides; New Holland #8 unloading wagon with triple beater on 8 ton gear; Gehl hopper blower; JD Van Brunt 10 hoe grain drill, McCormick 44 corn planter, 6' rear blade, Sears Roebuck hammermill, disc harrow and cultipacker

Appx 100 ton of good mixed hay

Surge SP 22 vacuum pump. Clay gutter cleaner unit; 3 Surge pail units, endless belt cow clippers; 30+ Surge vacuum pump Agway fence charger, lots of scrap metal, misc farm related items Not many small items - be prompt

Conditions by

LEONARD McFEATERS

717-867-2738

Harry H Bachman
Auctioneer 717-867-1809

Lunch by Farm Women Group 19