

Blair Co. DHIA

(Continued from Page D22)

Cove Valley Hol Inc	7 4	21,229	3 4	721
84 GH				
43 GH	2 5	17,994	4 1	744
William R England				
47A GH	6-1	17,608	4 2	736
72A GH	5-3	23,119	3 4	788
84A GH	5 0	18,384	3 9	715
28B GH	4 0	20,961	3 9	822
23B GH	4 0	17,943	3 7	659
71B GH	3 1	21,431	3 3	709

Donald G Hoover				
Leslie RH	5 9	18,540	3 7	693
Gwen RH	7 1	18,301	4 3	785
R Dwight Hoover				
9 RH	6 4	21,849	4 3	939
38 GH	6 4	25,187	4 3	1085
34 RH	6 3	17,451	4 9	860
11 GH	3 9	17,427	4 1	708
39 GH	3 10	20,292	3 8	772
Aldon Acres				
Barb RH	3 8	17,433	3 8	667
George D Smith				
89 GH	3 9	22,164	3 9	860
88 GH	3 8	15,316	4 4	671
Dawn Baker				
94 GH	9-8	16,884	4 0	677
212 RH	5 2	21,972	3 9	852
244 RH	4 8	20,522	4 1	847
246 RH	4 5	18,950	3 8	715
Harry Brubaker				
16 GH	2-10	16,060	4 1	653
Rodney L Metzler				
70 RH	9 0	16,636	4 1	687
71 GH	6 1	18,080	4 9	880
116 K GH	5 1	21,745	3 4	749
160 GH	3 9	17,749	3 7	657
54 GH	2 9	14,316	4 6	661
Phillip E Pheasant				
Barb GH	5 3	19,618	3 6	716
Sharon RH	4 4	18,362	3 7	677
Lar Ann Farm				
Doris RH	6-11	23,489	4 1	956
Lady RH	6 3	20,739	3 4	700
Betsy RH	2 7	17,144	4 7	808
Blackie RH	6 6	21,654	3 6	781
Allen L Edwards				
Coffee RH	3 1	18,253	3 8	696
Rodney Babe				
129 GH	5 3	19,730	3 8	751
171 GH	4 7	21,460	4 4	950
Thomas W Kelly				
Lori RH	5 2	20,560	3 9	797
Cherry RH	2 3	17,129	3 9	660
Noah S Zimmerman				
Sonja GH	3 1	19,564	3 6	710
Wayne A Sollenberger				
78 RH	6 6	17,207	4 6	798
Noah Zeiset				
Star GH	7 1	18,313	4 1	750
Ann RH	5 7	19,559	3 7	724
Rose RH	5 3	19,174	3 5	662
Wayne & Reida Carper				
31 RH	4 4	15,294	4 3	660
Mark Slagenweit, Jr				
Tina GH	8 3	19,600	3 6	705
Charles & Mike Hoover				
Gretta GH	3 9	17,516	4 3	749
Model RH	4 6	23,976	3 9	925
Sugar GH	3 1	20,710	3 5	723
Cracker RH	2 9	18,278	3 7	671
Chico RH	2 8	21,685	3 6	779
Tuffy GH	3 0	23,185	3 6	845
Jody GH	2 10	16,795	4 2	703
Sparkling Springs Farm				
282 GH	5 1	19,947	3 5	692
284 GH	8 5	17,529	4 0	697

Lancaster Farming, Saturday, April 5, 1980—D23

Bradley Sollenberger				
JD Black GH	6 9	18,397	3 9	722
Revere Smith				
Dottie GH	2 8	16,783	4 1	687
David W Bishop				
Star GH	3 1	17,711	4 1	734
K Wayne Burket				
2 GH	6 3	17,949	3 9	696
David N Greenleaf				
29 GH	7-7	18,690	3 8	708
Eli D Smith				
0677 GM	4-5	17,183	3 8	651
John Keithley				
15 RH	3-4	18,704	4 2	787

Special ag sales session added

HERSHEY — "The Changing International Markets of the 1980's" will be the theme of the Fifth Annual Pennsylvania International Trade Conference, Charles A. Fagan, III and Robert G. Walton, Conference Co-Chairmen, announced Monday. This year's conference will be held in Hershey, from May 4 to 6.

The purpose of PITC is to expand the Pennsylvania businessman's awareness of the challenges and opportunities in international trade and investment, and to prepare him to take advantage of those opportunities.

Special sessions on international agricultural sales have been added to this year's program. Some of the discussion topics to be covered are: new markets for agricultural exports; methods for reaching foreign buyers; and the world demand for food and agricultural products.

Participants will attend panel sessions on current business issues, and gain practical advice on doing business abroad. The panels are comprised of prominent businessmen and professionals who will relate real-life experiences and success stories — both for the new-to-export and the ex-

perienced international company.

A highlight of the 1980 conference will be the presentation of the first "Governor's Export Award" by Pennsylvania Governor Dick Thornburgh at the Keystone Dinner which is slated to open this year's PITC on May 4.

In addition to Governor Thornburgh, the conference's impressive array of keynote speakers include Charles W. Parry, Executive Vice President, Aluminum Company of America, and John L. Moore, Jr., President and Chairman of the Export-Import Bank of the U.S.

This year a unique opportunity for an individual marketing consultation is also available to PITC participants. By special arrangement with the U.S. Department of Commerce, attendees will be able to meet with a Department of Commerce international trade specialist at the conference to discuss marketing of their product in specific foreign markets.

Working to promote export trade, the PITC is an independent, nonprofit organization sponsored by a number of leading Pennsylvania business firms and the Commonwealth of Pennsylvania.

FRESH COWS EVERY WEDNESDAY IS SPRINGERS



DAIRY DAY

AT NEW HOLLAND SALES STABLES, INC.

New Holland, PA

If you need 1 cow or a truck load, we have from 100 to 200 cows to sell every week at your price. Mostly fresh and close springing holsteins.

Cows from local farmers and our regular shippers include Marvin Eshleman, Glenn Fite, Kelly Boser, Bill Lang, Blaine Hoffer, Dale Hostetter, H D. Matz, and Jerry Miller.

SALE STARTS - 12:00 SHARP

Also Every Wednesday,

Hay, Straw & Ear Corn Sale - 12:00 Noon

All Dairy & Heifers must be

eligible for Pennsylvania Health Charts.

For arrangements for special sales or herd dispersals at our barn or on your farm, contact

Abram Diefenbach, Mgr.

717-354-4341

OR

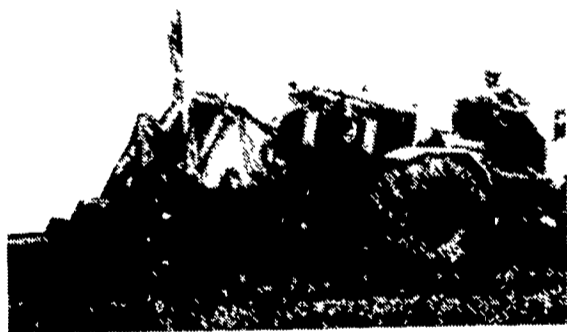
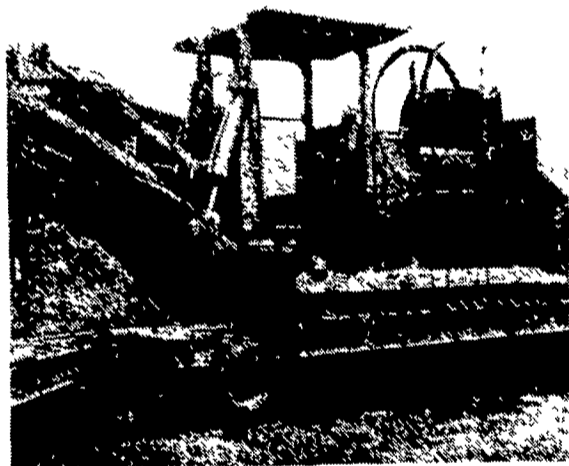
Norman Kolb

717-397-5538

HEIFERS

BULLS

DRAINAGE PROBLEMS?



COCALICO EQUIPMENT HAS THE TWO MACHINES TO HANDLE YOUR DRAINAGE PROBLEMS.

★ Both Machines Equipped with Laser Beam Grade Control

Drainage Pays High Returns

Investment
Land Drainage
Farm Buildings
Farm Land
Stocks
Bonds

Typical Annual Return
21-46%
3-23%
11%
7 4%
6 1%

COMPARE

Even with the conservative figures shown here, it's obvious that land drainage should top farmers' lists of investment priorities.

★ We Stock Heavy Grade Tubing which Exceeds SCS Specifications. In sizes 4", 6", 8", 10" and 12".

★ Also Pipe And Fittings For Tile Outlet Terraces.



COCALICO EQUIPMENT CO.

DRAINAGE & EXCAVATING

RD #3, DENVER, PA 17517

PH: 215-267-3808



AGWAY PETROLEUM



BOX 1197, DILLERVILLE ROAD
LANCASTER, PA.

**TRY A TANKFUL.
YOU'LL LIKE THE CHANGE.**

CALL LANCASTER AGWAY
PETROLEUM DEALER

717-397-4954

ASK ABOUT OUR QUANTITY
DISCOUNT PRICES