

Livestock market and auction news

Omaha Cattle

Thursday, April 3

Report supplied by USDA
Closing prices on slaughter steers were 4.50-5.50 lower, and heifers were 5.00-6.00 lower late. Cows were 2.00-3.00 lower and bulls 3.00-4.00 lower.

Four day receipts this week: 9300; last week: 10,000; year ago 9500.

The decline in fed cattle prices continued at an accelerated pace into the fourth successive week. The current downturn was the most severe for a one week period in the past several years and left closing levels at the lowest point since late August. The downturns were enforced on very modest supplies in reflection of a chronically bearish downward plunging carcass trade. Futures trading also shared in the bearishness, often closing at the maximum allowable decline. In view of the poor movement of the finished product, most buying interests confined purchases to minimum immediate requirements. The run included a fair percentage Choice steers and heifers although many carried a moderate to heavy coating of mud. Steers made up approximately 45 pct. and heifers 40 pct. Cows comprised 8 pct. and feeders 5 pct.

STEERS: On Monday, load Choice 3 1215 lbs. 65.00, three loads Choice with end Prime 3-4 1150-1275 lbs. 64.35-

64.50. At Midweek low time, Choice 2-4 1025-1250 lbs. 59.00-60.25, small lot 3 1150 lbs. 61.00. Mixed Good and Choice 2-3 1000-1200 lbs. 58.00-59.00. Good 2-3 56.00-57.50. Three loads Good 1325-1450 lbs. Holsteins 55.00-55.50.

Average of LS-214 detailed quotations for Choice 900-1100 lbs. steers this week 61.44; Choice 1100-1300 lbs. 61.41. Average weight steers this week 1166 lbs. as compared 1161 last week. Average weight heifers this week 1005 as compared 1017 last week.

HEIFERS: On Monday, load Choice with few Prime 975 lbs. 64.00. At the close, Choice 2-4 900-1050 lbs. 58.00-59.00. Some carrying heavy coating mud or predominantly 4 54.50-57.00. Mixed Good and Choice 2-3 56.00-58.00. Good 2-3 54.00-56.00.

COWS: Utility and Commercial 2-4 42.00-44.00, some high-dressing smooth heiferette type 45.00-45.50. Cutter 41.00-43.00. Canner and Low-Cutter 37.00-41.00.

BULLS: 1-2 1300-2100 lbs. 50.00-57.00.

FEEDERS: Load Medium Frame No. 1 971 lbs. steers 60.50.

Lebanon Valley Auction

Tuesday, April 1

Report supplied by PDA
CATTLE 193. Compared with last Tuesday's market; few Choice No. 2-4 1000-1200

lbs. slaughter steers 59.75-61.00, few Good 56.50-59.50, Standard 53.00-56.50, few Utility 50.00-54.00. One Choice slaughter heifers at 59.10, few Good 54.75-56.85. Utility & Commercial slaughter cows 44.50-49.00, couple 49.75, Cutters 44.00-48.50, Canner & Low Cutter 43.00-46.10, Shells down to 39.00. One Good slaughter bullock at 59.25, couple Standard at 51.00. Few Yield Grade #1 1100-1920 lbs. slaughter bulls 57.25-64.00. Large Frame #2 650-950 lbs. feeder steers 47.00-53.00, few 250-400 lbs. 65.00-72.00.

CALVES 172. Few Prime vealers 119.00-121.00, few Choice 101.00-117.00, few Good 85.00-102.00, Standard & Good 70-90 lbs. 63.00-74.00, Utility 50-80 lbs. 35.00-65.00. Farm calves, holstein bulls 85-125 lbs. 75.00-105.00, few to 117.00; holstein heifers 85-145 lbs. 113.00-174.00, mostly 125.00-150.00.

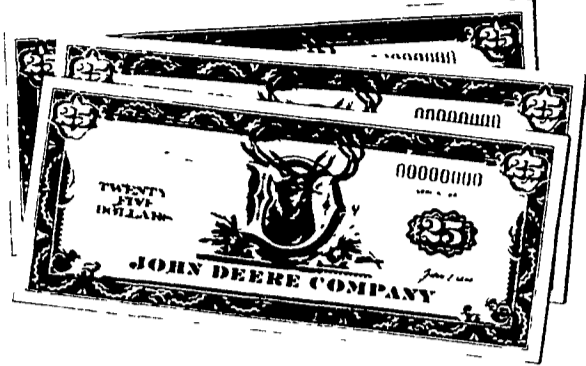
HOGS 265. US No. 1-2 200-240 lbs. barrows & gilts 29.75-30.25, few to 30.75, No. 1-3 195-240 lbs. 29.00-30.00, No. 2-3 230-280 lbs. 27.00-28.00. US No. 1-3 250-550 lbs. sows 22.75-25.75. Few Boars 21.00-21.75.

FEEDER PIGS 40. US No. 1-3 50-75 lbs. feeder pigs 32.00-39.00 cwt.

SHEEP 88. Choice 25-55 lbs. spring slaughter lambs 80.00-100.00, few Good 20-25 lbs. 76.00-80.00; Choice 60-90 lbs. Fall lambs 59.50-66.00.

BONUS 1980

Up to \$600 bonus buying power for early orders of John Deere Disks, Chisel Plows, or Hay and Forage Equipment



Preseason orders help John Deere plan production of most needed models and sizes. So from February 1 through May 31, 1980, John Deere is offering impressive bonuses for preseason orders. This bonus is above and beyond our best deal to you on this equipment. Your early order qualifies you for \$50 to \$600 in John Deere money for certain models of disks, chisel plows, balers, mower/conditioners and pull-type forage harvesters. Promptly after delivery, you will be mailed your bonus John Deere money to spend for products or services at our store. There's more. You'll get price protection from

the time you order any machine in the bonus program. Use a John Deere Finance Plan and no finance charges will accrue on any machine in the program until the first day of the month which begins the 1980 use season in our area. This early-order program includes a list of dozens of disks, chisel plows, and hay and forage tools. But your preseason order must be signed before March 31 to earn the most John Deere money. Come in soon, check the list and ask us for our best deal on this new equipment. You'll be expected to take delivery of the equipment as soon as it's available.

BUYER BONUS IN JOHN DEERE MONEY FOR NEW EQUIPMENT ORDERS SIGNED DURING *

EQUIPMENT	FEB. MAR.	APR.	MAY 80
DISKS			
111 and 115	\$ 75	\$ 50	
210 215 310 315 340 1630	\$150	\$100	
220 230 235 350 440			
455 1640	\$225	\$150	
331 and 360	\$375	\$250	
370	\$500	\$350	
CHISEL PLOWS			
1610 Integral Rigid 1610 Drawn Rigid (11 thru 17 foot)	\$ 75	\$ 50	

1610 Drawn Rigid (19 thru 23-foot)	\$200	\$125
1610 Drawn Flexible (23 thru 27 foot)		
1610 Drawn Flexible (29 thru 41 foot)	\$300	\$200
1650 Folding	\$600	\$400
BALERS		
All Square and Round Balers	\$225	\$150
MOWER/CONDITIONERS		
1207 1209 and 1380	\$300	\$200
FORAGE HARVESTERS		
Pull Type 3940	\$300	\$200
Pull Type 3960	\$400	\$275

*These offers are subject to equipment availability.

ENFIELD EQUIPMENT INC.
Whiteford, MD 21160 Phone 301-452-5252



MUSSELMAN LUMBER INC.

200 BRIMMER AVENUE, NEW HOLLAND, PA

Phone 717-354-4321



Put a roof over your roof.

Cover your old shingled or built up roof with

Onduline

Corrugated asphalt panels warranted 25 years against leaks

USE THE ASPHALT ROOFING/SIDING THAT

- insulates like cork
- installs easily on foot centers
- will not rust
- will not corrode from fertilizers or chemicals
- offers a choice of built in colors
- requires no special tools
- is lightweight and flexible

Stocking Dealer
Silver, Red, Green & Brown

SPECIAL Driveway Sealer

ONLY \$6.50 5 gal.

Save



10% Off

Olympic Stain & Overcoat In Stock

SALE

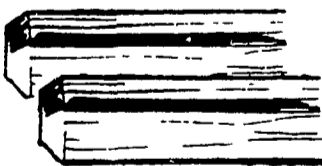
2 x 4 x 8 Economy Kiln Dry Spruce

Only 99¢ Reg 1 14

LANDSCAPE TIMBERS

Pressure Treated 3 1/2 x 4-5/8 x 8'0"

Reg \$4.39 Only \$3.99



CONCRETE MIX

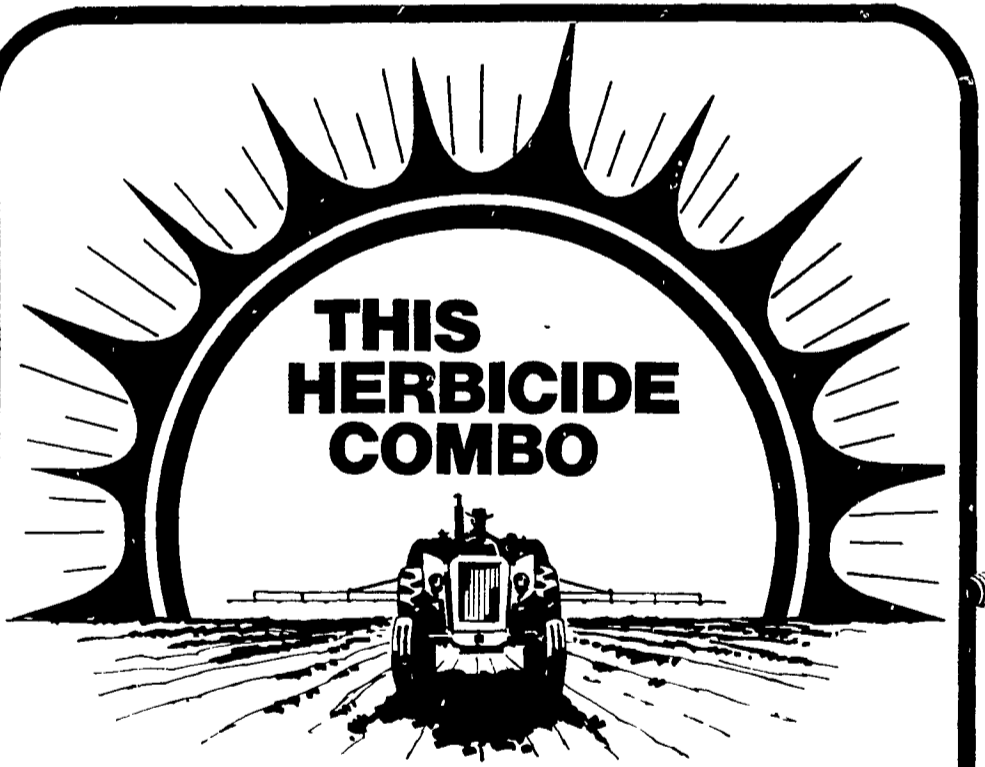
80 lb. bag SAND MIX
80 lb. bag MOTAR MIX
80 lb. bag BLACK TOP
75 lb. bag WASHED GRAVEL
75 lb. bag

Wolmanized

Pressure-Treated Lumber

Large Selection 2 x 4 to 2 x 10

4 x 4, 4 x 6 & 6 x 6



THIS HERBICIDE COMBO

goes on early, stays late, costs less.

You can spray Princep* + AAtrex* up to four weeks before you plant

And you'll like our price on this herbicide combination for corn

But you'll get season-long control of grasses and broadleaves. Fall panicum, Crabgrass. And the tough broadleaves that other combinations let through.

PRINCEP + AATREX — your best combination for corn

Princep* trademark of CIBA-GEIGY for simazine
AAtrex* trademark of CIBA-GEIGY for atrazine

SERVICE FEED & SUPPLY, INC.

Box 97, Main St.
Cardiff, MD 21025

301-452-8444

717-456-7433

SALE on Armstrong Ceiling Tile

Sale Ends April 12, 1980